



1995 GMC SL 1500
4x4, 4.3 V6, 5 Spd.,
PS, PB, AM/FM,
6100 GVW,
44,000 Miles **\$9,950**



1995 GMC SL 3500
4x4, 350 Auto, PS, PB, Air,
AM-FM Cass, 9200 GVW,
4 10 Ratio, Limited Slip,
Towing Package, Dark Green,
79,000 Miles..... **\$11,995**

A&J AUTO SALES

798 E. Main St., Rt. 322 East, Ephrata, PA 17522
• 717-733-2873



Mon.-Fri 8am - 8pm. Sat. 8am - 4pm. Closed Sun
Rt 72 - 10 miles North of Lebanon, Exit #30. I-81
717-865-4810 OR 1-800-382-7700



97 CHEV. ASTRO CARGO VAN
V6, AT, AWD, A/C, PS, PB, 76,000
Miles, Blue & White **\$10,495**



94 DODGE DAKOTA CLUB CAB
AT, 4x4, PW, PL, 11,000 Miles, Blue
\$7,995



95 CHEV ASTRO EXT. VAN
AT, 7 Pass, A/C, PS, PB, AC, T, C,
AWD, 68,000 Miles, Blue **\$9,495**



96 DODGE RAM 1500 VAN
AT, A/C, PS, PB, 49,000 Miles, Blue &
White **\$8,995**



95 FORD E350 BOX VAN
AT, A/C, PS, PB, 61,000 Miles, White
& Grey **\$10,995**



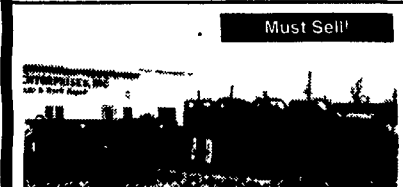
94 FORD RANGER SUPER CAB
AT, A/C, PS, PB, PW, PL, C, 4x2,
67,000 Miles, Red **\$8,495**



1986 Mack "RD800" "Brute" Tractor, E9-450
HP, 9-Spd Mack Trans, 44K Mack Rears On
Hendrickson Rubber Block Susp, w/61"
Spread, 20K Front Axle w/Torque Arms,
Double Frame, 216" WB, 15 1/2' Usable
Frame w/o Stretch, Wellline, Light Rack, Runs
Excellent! 362K Orig Miles, New PA State
Inspection **Call For Price**



1998 Mack RD688S Tractor, E7 400hp w/V
Mack II electronics, 9 spd Fuller, 44K rears on
camelback, A/C, P/S, dbl frame, headache
rack, 187" WB, 13' of useable frame, will take
14-14-1/2' body w/o stretch, 193K org mi, new
PA state insp



**Mack B81, B83 Truck Tractors, A Lot of Work
Done To Some. All Excellent Restoration
Projects!** Comes with "3" Trucks and \$12,000
Parts Package, N.O.S., New in Boxes from
Mack, Enough to Completely Restore "3" B81
Type Macks! Big Discount - Call for
Information - "No Reasonable Offer Refused"



1995 White WG64T Tractor, Day Cab, Slight
Traffic Accident to Front End, Simple Fix! Was
Excellent Condition, 330 HP Cummins, 10
Spd Fuller Trans, 38K Rears on Air Ride, 12K
Front Axle, 458K Orig Miles, Was \$17,000,
Now First **\$8,500 Takes It!**



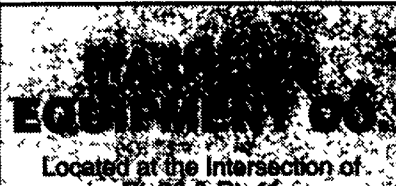
1978 IH 4300 "Wrecker", 290 Cummins, 10
spd Fuller trans, 23K rear, P/S, A/C, Jake
brake, new paint, dual chrome stacks, alum
Budd wheels, runs & drives exc, new PA state
inspection



1999 Ford F350 Dually, 7.3L Turbo Diesel,
Auto, P/S, A/C, Extended Cab, 18,000K Orig
Miles, Reading Utility Body, Pipe Rack, Like
New Condition, Business Asset Liquidation,
Call For Price!



Mack Truck Parts - Trans. & Rears!
38K Trunnion & Housing Ass w/Springs,
No Diffs \$400
38K Differentials Front & Rear, 4.50 Ratio
(Early) \$800
44K Differentials Front & Rear, 5.12 Ratio
(Early) \$500
85 Mack R Model Hood, Good Cond \$500



Located at the Intersection of
Rt. 30 & Rt. 41
"GAP" (Lancaster County), PA
(717) 442-9113
Mack Trucks Our Specialty!

ALL STEEL REPLACEMENT TRUCK BED



8 1/2' Lx82"W or 96"W
10'Lx8"W, 12'Lx8"W

STARTING AT \$595.00

4'x8' \$495
8'x10' \$999



UTILITY (TILT OR GATE MODEL) SIZES:
4'x8', 5'x8', 5'x10' 2000# GVW
5'x10', 5'x12', 6'5" x12', 3000# GVW



UTILITY WITH GATE-SIZES:
16'x77", 18'x77", 7,000# GVW



CAR HAULER TRAILER:
16'x78" & 18'x78" Includes 5' Beavertail
7,000 lb. GVW 4' self storing ramps

ALSO 84" WIDE!

Quality Trailers Built Locally By "PA International"

Car Dollie



Sale \$795

19 Ft. Hydraulic Tilt Trailer,
10,000 lb. GVW
\$3,495

6'x12'x6' high enclosed trailers
Call for prices

Over 200 Trailers
IN STOCK
Starting At \$495.00
T-Plates
DEALERS WANTED

Highway Hydraulic Dump

BRI-MAR



5'x8' 3,000# \$2,195
5'x8' 5,000# \$2,495
6'x10' 7,000# \$2,995
6'x10' 10,000# \$3,195
7'x12' 10,000# \$3,995

FREE BATTERY

LOW PROFILE DUMP TRAILERS



BRI-MAR

6 x 12 10,000# low profile **\$4,095**
6'x10' GVW low profile dump trailers
w/ landscape gate
7,000# **\$3,495** FREE BATTERY
10,000# **\$3,795**

Starting At \$3995 w/4' Adj. Tail



GOOSENECK SIZES: 20'x8'
12,000# GVW, 24'x8' 14,000# GVW

Low Profile construction
16'x77" & 18'x77"
10,000 # GVW



DECK-OVER CONSTRUCTION
20'x8' w/Tail 10,000# GVW **\$3,995**
20'x8' w/Tail 12,000# GVW **\$3,795**

KUTZ FARM EQUIPMENT, INC.

Pine Grove, PA 570-345-4882 FAX 570-345-2884 8 AM-5 PM Monday Thru Friday
8 AM-12 Saturday Or By Appointment

KELLER BROS.

(Buffalo Springs) Lebanon, PA

717-949-2000 or 1-800-363-2767

LEBANON COUNTY'S HEAVY DUTY TRUCK HQTRS.

Over 100 Clean Pre-Owned Vehicles
In Stock At All Times!!

1999 FORD F250 SUPERCAB
4x4, XL, Long Bed, 7.3
Diesel, AT, AC, 1-Owner



1998 FORD EXPLORER SPORT
4x4, V6, AT, A/C,
One Owner, Low Miles



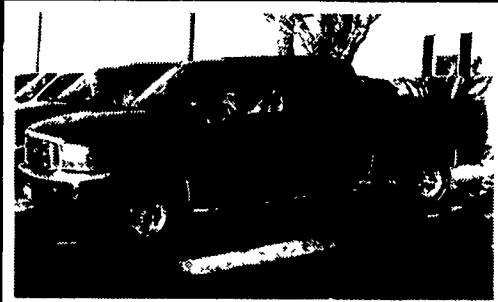
1990 FORD F250
4x4, Reg. Cab, V8, AT,
AC, XL Pkg.
Special \$7,495



1998 FORD F150 SUPER CAB
V8, AT, A/C, Long Box,
1 Owner



1996 FORD F250 SUPER CAB
Diesel, XLT, 4x4,
5 spd., A/C, PW/PL,
Short Bed



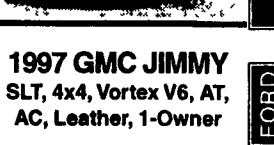
2000 & 2001 NEW FORD SUPER DUTY 7.3 POWER STROKE DIESELS
Over 10 In Stock, Crew Cabs &
Super Cabs, 4WD & 2WD
SAVE UP TO \$5,000

1999 FORD EXPEDITION XLT
V8, AT, A/C, PW, PL,
3rd Seat, One Owner,
Only 15,000 Miles



Also '98 Eddie Bauer 22K

1999 FORD F350 SUPER CAB DUALY
XLT, 7.3 Turbo Diesel,
6-Spd.



1996 FORD F250 SUPERCAB 4X4
AT, XLT, 460 Gas,
Loaded with
All Options, Tan



1998 FORD RANGER SUPER CAB
XLT, 4x4, V6, 5 Spd.,
Alloy Wheels, Tarp,
One Owner



1999 DODGE DURANGO SLT
4x4, V8, AT, A/C, Loaded,
Leather, Low Miles.



1995 FORD F350 4x2 DIESEL
5-Speed, A/C, C/T



1997 GMC JIMMY SLT, 4x4, Vortex V6, AT,
AC, Leather, 1-Owner



2000 TOYOTA RAV 4
4x4, 5-Spd., A/C, Alloy
Wheels, AM/FM/Cass.,
1-Owner, Low Miles



1997 DODGE RAM 1500 SLT
4x4, AT, A/C, PW, PL,
Low Miles



1995 DODGE DAKOTA 4X4
Club Cab, SLT, V6, AT,
A/C, PW, PL



2000 JEEP WRANGLER
Hard Top, 4x4, 5 Spd.,
A/C, Like New,
Only 5,000 Miles



KELLER BROS. FORD HAS SERVED CENTRAL PENNA. AREA FOR MORE THAN 78 YEARS.