

CONSTRUCTION EQUIPMENT

- 6-Miller Welders, 400 Amp. - 3 Phase, Mounted In Steel Rack.....\$1,500
 - 1968 Rogers Lowboy, 50 Ton, Detachable Trailer For Parts.....\$1,900
 - 70' Crane Boom Fits, 50 Ton Marion Crane.....\$1,300
- (410) 642-2430**

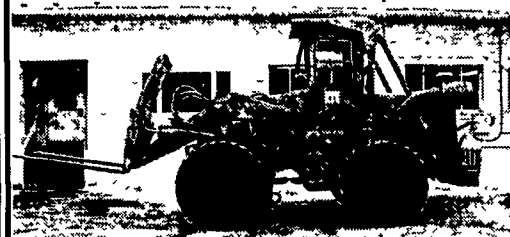
- #7615 Case 450 Dozer, 1978, Tracks Good, U/C Good, New Paint. \$12,000
- #7614 Case 1840 Unloader, 1997, Aux Hyd., Drt Bkt, Tires 95%, 241 Hrs \$13,900
- #7585 Case 1840 Unloader, 1996, Aux Hyd., Dirt Bucket w/Tooth Bar, 1200 Hrs \$11,900
- #7458 Case 550E Dozer, 1995, New UC, 3200 Hrs \$34,900
- #7525 Case 450 Long Track Dozer, 1984, New U/C 5500 Hrs \$23,900
- #7419 IH 260A Loader Backhoe, 1979, 2WD, Cab Std \$10,000
- #7520 Case 1835B Unloader, 1986, Utility Bucket w/Teeth. \$6,750
- #7491 Case 1840 Unloader, 1998, Aux. Hyd., Drt Bkt, 1212 Hrs \$14,500
- #7365 Case 1840 Unloader, 1991, Aux Hyd., Drt. Bkt., 3000 Hrs \$10,900
- #7496 Case 580SE Loader Backhoe, 1986, 2WD, Can, Ex. \$15,900
- #7517 Case 580K Loader Backhoe, 1987, 2WD, Can, Ex., 4661 Hrs \$16,900
- #7516 Case 580K Loader Backhoe, 1989, 2WD, Cab, Ex., 5917 Hrs. \$19,900
- #7456 Case 580SL Loader Backhoe 1998, 4WD, Cab, Ex., A/C, 1985 Hrs \$44,900
- #7521 Case 580SL Loader Backhoe, 1996, 4WD, Cab, Ex., Stereo, 3775 Hrs \$35,900
- #7389 Int'l 270 Loader Backhoe, 1980, 2WD Cab Standard, 4,000 Hrs \$8,500
- #7364 Case 95XT Unloader, 1997, Cab w/Heat, Hyd. Coupler, 82" Bucket, 1550 Hrs. \$27,900
- #7362 JD 410 Loader Backhoe, 1978, 2WD, Canopy, Standard, 3100 Hrs. \$12,900
- #7366 JD 310 Loader Backhoe, 2WD, Canopy, 14' Hoe, Excellent Cond., 2840 Hrs. \$10,900
- #7269 Case 680K Loader Backhoe, 1987, 2WD, Cab, Ext Hoe, 5900 Hrs \$15,900
- #7078 Case 450 Crawler Dozer, u/c Good, 5,000 Hrs \$14,500
- #7015 Case 570XLT Loader, 1995, 4WD, Cab, 3 pt., 2,500 Hrs. \$25,000
- #6814 Vibromax 252 Roller, Dual Drum \$12,000
- #6678 Case 1840 Unloader, 1994, Aux Hyd Drt Bkt., 1,718 Hrs. \$11,900
- #5182 Case 1845C Unloader, 1989, Aux Hyd., UT Bkt., 2,500 Hrs \$12,500

Vernon E. Stup Co.
5859 Urbana Pike, Frederick, MD 21701
301-663-3185

T&L Equipment Sales

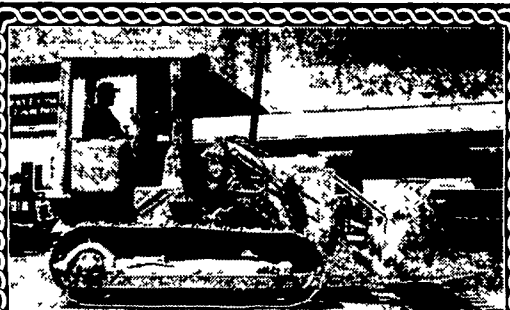
- '98 Timberjack 460 grapple & winch skidder, 1700 hours
- (2) 1997 Franklin 170 grapple & winch skidders, 4000 hours
- 1994 Franklin 560 cable skidder
- 1994 Cat 518C grapple winch skidder
- 1996 Hydro Ax 41 IEX shear
- 1994 Hydro Ax 51 IE saw head
- 1985 Hydro Ax 61 IB shear
- FNH 3yd front end loader
- 1997 Case 1455 track loader
- 1987 Case 450 dozer w/6-way angle blade

P.O.R.
Office 570/889-3087
Home 570/889-3463



1976 TEREX 72-31
10,000 lb. Forklift, 68" Forks, Hydraulic Spread, ROPS Cab, Low Hours, Clean Unit
\$14,500

Curry Supply Co., Curryville, PA
1-800-345-2829



Cat 941/951 CRL Loader
15 Crawler Loaders To Choose From
Fiat/Cat/Komatsu - Sale Or Rent

Heavy Equipment Loader Parts, Inc.
10070 Allentown Blvd., Grantville, PA 17028
No Sunday Calls (717) 469-0039

1987 Eager Beaver 9 ton trailer. 1985 International single axle L10, 7 speed, GVW dump truck w/air brakes & air ride seat. 1980 JD 310A, extend-a-hoe, flip pads, full cab. 717-292-2012

Industrial 250 Cummins power unit, completely rebuilt, 800-239-0921.

85 RD 688 Mack triaxle dump. 350 Mack, 15 spd Fuller. 19'6" alum TI Brook, 569,450ml \$22,000. Mike 610-507-1287, page 800-608-2744.

- 1986 JD 350D dozer, 6-way.....\$12,500
- Case 450 dozer, 6-way.....\$10,000
- 1983 JD 555A crawler loader...\$13,000
- JD 750 loader backhoe, compact, 600 hrs.....\$10,000

Rinehimer Equipment
(570) 542-5667
(570) 868-6237



Cat E120B & 110B Excavators,
3 To Choose From \$22,500 to \$24,500



Case W20 Wheel Loader, Good Condition \$14,500



85 Linkbelt LS3400 Excavator, New UC, Rebuilt Engine & Pumps. \$18,500



JD 670 Graders, 12' Blade 1 w/Snow Wing \$19,000 & \$25,000



Cat 943 Crawler Loader, EROPS, Good UC, Recent Eng Rebuild \$37,500



Clark, 10,000 SOLD Dual Wheels, Cab \$7,500
Baker, 8,000 lb Cap., Deutz Diesel \$6,000
Hyster, 11,000 lb Cap., Dual Wheels, Perkins Dsl \$7,500

- JD 455D Crawler Loader, New Bucket, Good UC, Excellent..... \$16,000
- Cat D5 Dozer, New UC, New Clutches, Excellent Condition \$16,500
- 91 Bobcat 943 Skid Loader, Grapple Bucket, Tracks, Foam Filled Tires.. \$11,500
- 94 Bobcat 953 \$12,500
- 773 Bobcat, Good..... \$11,500
- (2) Cat 977L Crawler Loaders, EROPS..... \$16,000 & \$19,000
- JD 710B Backhoe, OROPS, Plumbed **SOLD** per..... \$12,000
- JD 450G Dozer, 6 Way Blade..... \$25,000
- Stone Wolfpack 2500 double drum asphalt roller. \$3,500
- 86 JD 450E Dozer, 6-Way, Good UC, ROPS \$20,000
- Marklift 30' Man Lift, 4x4, Mechanics Special..... \$6,500

Weaver's Equipment Sales

RD#1, Box 418, Milton, Pa. 17111
Phone: 570-523-9598

JERRE MARTIN REPAIR

Sales Service

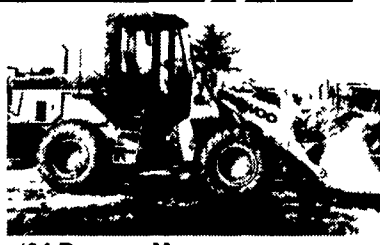
391 N. Farmersville Rd., Ephrata, PA 17522
(Just minutes off RT 222)
(717) 859-3283

Rentals Repairs



'83 JD 655 Rebuilt Hydros \$22,000

All Machines Listed For Sale Are Also For Rent



'94 Daewoo Mega 200, 1900 Hrs. \$30,000



'86 Cat 953 60% UC \$37,000



'98 JD 544H 1610 Hrs., J.R.B Coupler \$80,000

Financing Available

Road Service Available Now
Custom Repairs On All Makes Construction Equipment

WE ARE BUYERS FOR LATE MODEL CONSTRUCTION EQUIPMENT NEEDING REPAIRS

- Case 455C crawler loader w/ripper..... \$16,000
- '89 Case 580K cab, E-Hoe, 4x4..... \$18,000
- Case 1840, foot controls..... \$8,000
- Case 1845C..... \$8,500
- '93 Case 9020 excavator..... \$35,000
- '95 Cat 1T28F w/bucket..... \$55,000
- '86 Cat D4H 6-way..... \$30,000
- '93 Cat 312 excavator..... \$32,000
- '70 Cat 950 wheel loader..... \$15,000
- Cat 955L crawler loader, new U/C..... \$24,000
- Cat 955H crawler loader, Pedal Steer..... \$9,500
- '90 Cat 963 crawler loader, OROPS, good cond..... \$48,000
- '95 Cat 939, good cond..... \$38,000
- '94 Cat 963..... \$65,000
- '95 JD 450G w/6-way blade..... \$33,500
- '89 JD 455G crawler loader, cleaned & painted..... \$24,000
- '90 JD 555G, excellent..... \$28,000
- '94 JD 644G..... \$55,000
- NH 785 skid loader, rebuilt motor, new paint..... \$10,500
- '89 Dreser 250E, Crawler Loader, 4N1 Bkt..... \$16,000
- Assortment of thumbs for excavators, starting at..... \$1,000
- Available: Rebuilt exchange motor for Cat 953..... \$5,000/Exchange

WENGERS OF MYERSTOWN

CONSTRUCTION EQUIPMENT & PARTS

800-552-5080 • Nights 717-272 9583

Rt. 501 South Myerstown, PA 17067

HOURS Mon-Fri • 7:30-5:00 Saturday • 7:30-Noon

www.wengers.com

kbaum@wengers.com

Cat 312 80' U/C Original \$38,500



Case 602D 68" w/Cab \$24,500

