

# — Spring Planting Review —

## 10 Steps To Better Planter Performance

MOLINE, Ill. — Proper planting equipment maintenance is critical to ensure performance in the field.

Bill Barr, senior sales and service representative for row crop planters, John Deere Seeding Group, urges growers to review their service manuals, consult with their local dealer, and inspect their planter from the ground up working through these 10 simple steps:

1. Opener blades. Look for excessive wear. The openers should form a clear V-shape. Excessive wear will alter the opener spacing and change the shape and depth of the seed furrow. Adjust for wear by adding or removing shims as necessary.

2. Closing systems. Make sure the closing wheels are applying correct downforce. Check the wheel bearings for excessive wear and replace if necessary.

3. Seed tubes. Inspect the seed tube guards and guides, checking for proper alignment and excessive wear. Replace worn parts. Make sure the sensor is clear and the sensor wiring is intact. Use the brush provided by the manufacturer to clear seed tubes of debris.

4. Seed meters. Finger pickups include several moving parts, such as fingers, springs, backing plates, and brushes. Inspect and replace any worn or damaged parts. Vacuum seed meters generally require less maintenance than finger pickups, but you still need to inspect the seals and seed disk (and install the seed disk for your first crop). Check the flipper that engages the drive (on the back side of the meter) and repack with grease if necessary.

5. Planter drive systems. The planter utilizes several drive systems, including (1) the ground drive, (2) the seed meter drive, (3) seed transmission drive, and (4) chemical and fertilizer drive. Check

all chains for wear and proper lubrication and tension — chains should be free and loose. Check sprockets and idler assemblies for excessive wear and proper alignment. Proper drive function is critical to maintaining proper seed spacing and population.

6. Hydraulics. Check for leaks in the hydraulic system by attaching the planter to your tractor and cycling the various hydraulic components, checking for proper movement and response time. If a leak is suspected, power down the system and release hydraulic pressure. Avoid contact with hoses — high-pressure oil injection can cause serious injury.

Consult your dealer or service manual.

7. Tires. Proper drive performance requires a specific tire circumference. Low tire pressure can alter drive speed and seeding rates. Check tire pressure and inflate to the level specified in your service manual.

8. Attachments. Inspect attachments such as fertilizer and row cleaners for excessive wear and check for proper lubrication. Consult your service manual for specific checkpoints. For example, fertilizer attachments include pumps, nozzles, and strainers that may require service.

(Turn to Page A25)

## Successful Planting

(Continued from Page A23)

crusting, decreasing wind and water erosion, and preserving soil moisture.

“Research shows that yield increases when we have good soil adherence at the time of germination to help with moisture and nutrient uptake,” said Matt Weinheimer, tillage marketing manager for John Deere. “The 200 Seedbed Finisher creates an optimum situation for increasing yield potential. It’s a heavy-duty piece of equipment that helps growers create excellent growing conditions.”

When used in conjunction with the John Deere 980 Field Cultivator, the 200 Seedbed Finisher creates a seedbed with larger soil particles on the surface and finer soil particles in the seed zone.

“Larger particles on the surface help disperse and reduce the energy of raindrops, which reduces erosion. And it helps moisture flow past the larger particles on top into the root zone below where plants can utilize it,”

Weinheimer said.

The staggered rolling baskets of the 200, combined with proper seed and weighting of the unit, break surface clods and level the soil profile. Spiraling rods are spaced to produce a soil texture that reduces crusting while firming the soil in the seed zone.

“The Seedbed Finisher creates a surface profile resistant to crusting, but also firms the soil to encourage seed-to-soil contact and preserve moisture levels in the top three-inches of the profile,” said Weinheimer.

A double-truss tube provides added strength to the frame and generates down-pressure to improve leveling and to keep baskets rolling at a consistent depth.

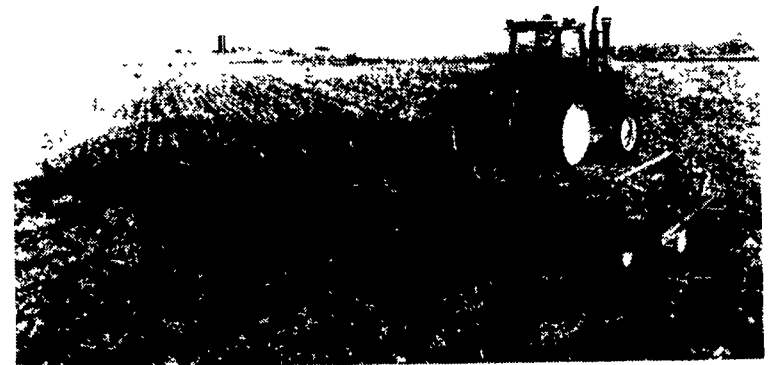
In the end, improving the soil profile and having your planter properly serviced at a John Deere dealership will ensure successful spring planting and allow you to take the first, critical step toward a bountiful fall harvest.



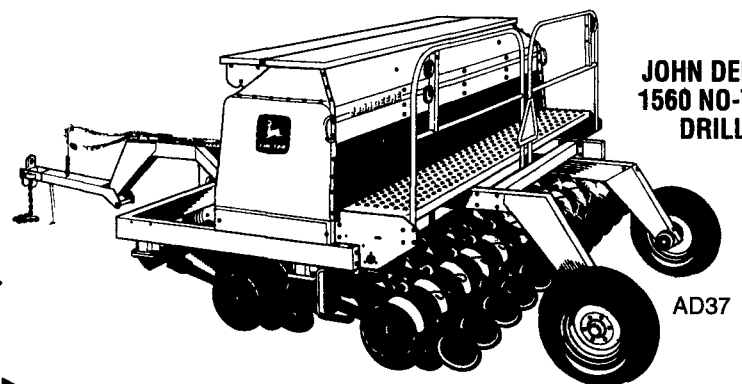
The John Deere 200 seedbed finisher creates a surface profile resistant to crusting while firming the soil to encourage seed-to-soil contact.



The John Deere 4710 sprayer can be equipped with parallel tracking that uses a visual indicator with audible beeps to guide the operator down a straight path.



The John Deere Field Doc™ data collection system, which works in concert with Deere's StarFire receiver, GreenStar™ display, and on-board mobile data processor, allows you to make notes on the go.



JOHN DEERE  
1560 NO-TILL  
DRILL

AD37

## NO-TILL? NO PROBLEM.

- ▶ Here's the drill that truly outperforms the legendary 750 Drill.
- ▶ Apply as much as 450 pounds of down-force per opener for penetrating tough no-till; turn off down-force to give openers 2 inches of float for accurate depth control in mellow conditions.
- ▶ Plain-grain seedbox capacity is boosted 25 percent... now 3 1/2 bushels per foot; boxes fill evenly, empty completely
- ▶ Grass-seed capacity has doubled (plain-grain only).
- ▶ Available in 10-, 15-, and 20-foot widths; 7 1/2- or 10-inch spacing.



**Clugston**

JOHN DEERE

AG & TURF, INC

**Chambersburg, PA**

I-81 - EXIT 8 (SCOTLAND) 3213 BLACK GAP ROAD

(717) 263-4103 (800) 377-3040

WWW.JOHNDEERE4U.COM



NOBODY DOES HAY BETTER