

**Phila. Vegetable**

PHILADELPHIA Terminal  
February 21, 2001

Report Supplied By USDA

VEGETABLES -ARTICHOKEs: MARKET ABOUT STEADY ctns CA Globe Thornless 18s 17.00 24s 17.00 30s 20.00 36s 20.00 -ASPARAGUS: MARKET ABOUT STEADY pyr ctns/crts 28 lb bchd MX Green lge 55.00 11 lb ctns/crts bchd MX Green lge 28.00 std 30.00 PE Green std 25.00 15 lb ctns bchd MX Green Tips std 25.00 -BEANS. OFFERINGS LIGHT buctns/crts FL Round Green Type Machine Picked 28.00 fair qual 20.00-22.00 -BEETS: MARKET ABOUT STEADY ctns bchd TX 12s 10.00 25 lb filmbags lse CD med 6.00 few 5.50 -BROCCOLI MARKET ABOUT STEADY ctns AZ bchd 14s 12.00 CA bchd 14s 10.00-12.00 mostly 10.00-11.00 FL bchd 14s 10.00 few higher and lower 20 lb ctns lse CA Crown Cut 12.00-14.00 -BRUSSELS SPROUTS: TOO FEW SALES TO QUOTE -CABBAGE. MARKET ABOUT STEADY 1 1/4 bucrts & 50 lb ctns CD Round Green Type med 6.00-7.00 Red Type med few 8.50 FL Round Green Type med 8.00-9.00 mostly 9.00 Red Type med 13.00-14.00 50 lb sks CD Round Green Type lge 6.00-7.00 NY Round Green Type lge 6.00-7.00 45 lb ctns MX Round Green Type med 8.00-9.00 1 1/4 bucrts & 40 lb ctns FL Savoy Type med 13.00-14.00 -CARROTS: MARKET ABOUT STEADY sks 48 1-lb filmbags CA Topped med-lge 13.00-15.00 mostly 14.00 few 12.00 occasional 16.00 50 lb sks lse CA Topped jbo 12.00 few high as 15.00 CD Topped jbo 8.00-10.00 mostly 9.00-10.00 MX Topped jbo 9.50 ctns bchd CA Bunched 24s 11.00 ctns 24 1-lb filmbags CA Baby Peeled 17.00 few 18.00 ctns 20 1-lb filmbags CA Baby Peeled 13.00-14.00 ctns 12 2-lb filmbags CA Baby Peeled few 16.00 -CAULIFLOWER. MARKET ABOUT STEADY ctns flmwrpd AZ 12s 16.00 9s 15.00 CA 12s 14.00-16.00 -CELERY MARKET HIGHER ctns CA 2 dz 17.50-18.00 previous commitments lower 2 1/2 dz 16.00-18.00 FL 2 dz 14.00 2 1/2 dz 14.00 3 dz 14.00 -CHINESE CABBAGE celerts FL 10.00 30 lb ctns CA Nappa 18.00 50 lb ctns FL Nappa 15.00-16.00 -CORN-SWEET OFFERINGS LIGHT wbrts FL White 4 1/2-5 dz 18.00 -CUCUMBERS. MARKET ABOUT STEADY flts/ctns flmwrpd CD Long Seedless med 12s 11.00-12.00 WAXED 1 1/9 buctns/crts MX med 28.00 fr qual 22.00 sml 24.00 UNWAXED 1 1/9 buctns/crts MX Pickles 150-200s 14.00 200-300s 16.00 -EGGPLANT MARKET ABOUT STEADY ctns/crts MX 18s 12.00 few low as 10.00 -ENDIVE MARKET LOWER 1 1/9 buctns/crts FL 8.00-9.00 mostly 9.00 -

ESCAROLE: MARKET ABOUT STEADY 1 1/9 buctns/crts FL 10.00-11.00 -GARLIC: MARKET STEADY 30 lb ctns AG White super jbo 25.50 exjbo 22.50 CA White super col fair cond 25.50 col fair cond 22.50 super jbo fair cond 21.00 CL Purple super col 27.00 super jbo 24.00 -GREENS: MARKET ABOUT STEADY ctns bchd CA Kale 24s 10.00-11.00 FL Dandelion 12s 10.00 MX Swiss Chard 12s 16.00 Red 12s 16.00 TX Dandelion 12s 11.00 Kohlrabi 12s 10.00 Red 12s 10.00 Swiss Chard 12s 10.00-11.00 Red 12s 10.00-11.00 ctns/crts bchd GA Collard 24s 8.50 Kale 24s 9.00 NC Collard 8.00-10.00 fair cond 6.50-7.00 Kale 8.00-10.00 fair cond 7.00 Mustard 10.00 Turnip Tops 10.00 Rape 10.00 ctns lse CA Kale Flowering 24s 12.00-13.00 MX Kale Flowering 24s 12.00 20 lb ctns MX Broccoli Rabe 24s fair cond 10.00-12.00 -LETTUCE-ICEBERG. MARKET LOWER ctns AZ 24s 19.00-22.00 mostly 20.00 few 23.00 few 18.00 fair cond 14.00 Wrapped 24s 20.00-22.00 few 23.00 30s 18.00-20.00 few 21.00 CA 24s 21.00 Wrapped 24s 22.00-23.00 few 24.00 MX 24s 19.00 Wrapped 24s 20.00 -LETTUCE-OTHER: MARKET ABOUT STEADY ctns AZ Green Leaf 24s 10.00-11.00 few high as 12.00 Red Leaf 24s 10.00-11.00 mostly 11.00 few high as 12.00 CA Boston 24s one label 14.00 Green Leaf 24s 10.00-11.00 mostly 10.00 Red Leaf 24s 10.00-11.00 mostly 11.00 3 lb ctns CA Mesculin Mix 6.50-7.00 mostly 7.00 -LETTUCE-ROMAINE: MARKET SLIGHTLY LOWER ctns AZ 24s 14.00-17.00 few 17.50 CA 24s 14.00-17.00 mostly 14.00-16.00 FL 24s 14.00 ctns 12 3-count pkgs AZ Hearts 14.00 1.3 bucrts AZ 24s 19.00 -MUSHROOMS: MARKET STEADY 10 lb ctns PA lge 15.00 few 14.50 med 11.75 few 11.50 4 qt bkts PA med-lge 6.50 sml-med 6.00 5 lb ctns PA Oyster 18.00-20.00 Portobellas 9.00 sml 8.00 3 lb ctns PA Shiitake 14.00 fair qual 11.00 Oyster few 12.00 ctns 12 8-oz trays flmwrpd PA 10.25 ctns 10 10-oz trays flmwrpd PA 10.25 few 10.50 -OKRA: OFFERINGS LIGHT 1/2 bucrts HD sml-med 25.00 -ONIONS GREEN: MARKET ABOUT STEADY ctns bchd MX 48s 14.00-16.00 mostly 15.00-16.00 some 18.00 48s sml 12.00-13.00 Leeks 12s 15.00-16.00 TX Leeks 12s 16.00 -PARSLEY: MARKET ABOUT STEADY 1 1/9 bucrts bchd FL Curly 60s 11.00-12.00 Plain 60s 11.00-12.00 ctns bchd AZ Curly 60s 14.00 Plain 60s 14.00 TX Curly 60s 12.00-14.00 Plain 60s 12.00-14.00 -PARSNIPS. OFFERINGS INSUFFICIENT TO QUOTE -PEAS GREEN. OFFERINGS LIGHT 10 lb ctns GU Snow Peas Decalaxed 12.00-14.00 Sugar Snap Peas Decalaxed offerings insufficient to quote -PEAS OTHER. OFFERINGS INSUFFICIENT TO QUOTE -PEPPERS

MARKET MX RED LOWER, OTHERS ABOUT STEADY 1 1/9 buctns MX Bell Type Red med 28.00 1 1/9 buctns/crts FL Bell Type Green exlge 24.00 lge 22.00-24.00 fair qual 20.00 MX Bell Type Green exlge 26.00 lge 24.00 Mxd Red And Green lge 18.00 15 lb ctns MX Bell Type Red lge 14.00-16.00 mostly 15.00 25 lb ctns MX Bell Type Red lge fair qual 22.00-24.00 5 kg ctns IS Bell Type Orange 90-110mm few 24.00-25.00 Red 90-110mm 19.00-22.00 mostly 20.00 Yellow 90-110mm 23.00 few 24.00 -PEPPERS OTHER: TOO FEW SALES TO QUOTE -RADISHES: MARKET STEADY ctns tpd 30 6-oz filmbags FL Red 5.00 ctns tpd 14 1-lb filmbags FL Red 6.00 40 lb filmbags tpd FL Red 14.00 ctns bchd MX Red 24s 7.00 -RHUBARB: OFFERINGS NONE -RUTABAGAS: OFFERINGS INSUFFICIENT TO QUOTE -SPINACH: MARKET ABOUT STEADY ctns bchd AZ Flat 24s 11.00 CA Flat 24s fair appear 10.00 MX Flat 24s 10.00 1 2/5 bucrts bchd CA Flat 24s 13.00 bukrts TX Savoy 12.00 ctns 12 10-oz filmbags Repacked Enroute Savoy 9.50 ctns 4 2-1/2-lb filmbags CA Flat 13.50 ctns TX Savoy 11.00 clipped 11.00 4 lb ctns CA Flat Baby Type 11.00 -SQUASH: MARKET LOWER 1/2 buctns/crts FL Yellow Straightneck med 4.00 ctns/lugs MX Zucchini sml-med 7.00-9.00 fair cond 6.00 med 6.00-7.00 few 8.00 fair cond 5.00 Yellow Straightneck sml-med 8.00 fair cond 6.00-7.00 -SWEET POTATOES: MARKET ABOUT STEADY CURED 40 lb ctns LA U.S. One Beauregard med 15.00 -TOMATOES: MARKET ABOUT STEADY 25 lb ctns FL 85% U.S. One or Better Mature Greens light red-red 5x6 9.00 few 10.00 6x6s 10.00 red 5x6s 8.00 Local Repack Mature Greens light red 5x6s 14.00 6x6s 15.00 6x7s 15.00 flts 2 ly MX Vine Ripes light red 4x5s 7.00-7.5l mostly 7.00 5x5s 6.50-7.00 5 kg ctns or the vine CD Vine Ripes Greenhouse re: sml fair cond 6.00 SP Vine Ripes Greenhouse light red-red med 16.00 -TOMATOFs, CHERRY: MARKET ABOUT STEADY flts 12 1-pt bkts FL light red-red 9.00-10.00 mostly 10.00 flts 12 1-pt cntrs with lids FL Grape Type light red-red 12.00 flts 12 1-pt bkts MX light red-red 10.00-11.00 flts 12 1-pt cntrs with lids MX Grape Type red 10.00-12.00 mostly 10.00-11.00 few 9.00 -TOMATOES, PLUM TYPE: MARKET ABOUT STEADY 25 lb ctns FL light red-red 12.00-13.00 MX light red-red 10.00 red low as 8.00 sml 8.00-10.00 red

8.00-10.00 -TURNIPS: 25 lb filmbags NC Purple Top med 8.00 -VEGETABLES OTHER: TOO FEW SALES TO QUOTE

**Phila. Onion, Potato**

PHILADELPHIA Terminal  
February 21, 2001

Report Supplied By USDA

ONIONS AND POTATOES - ONIONS DRY: MARKET STEADY US1 OR GENERALLY GOOD QUAL AND COND UNLESS OTHERWISE STATED. Yellow Globe Type NY 50 lb sks med 6.00-8.00 mostly 8.00 8.00 sml-med 5.00 mstr cntr 16 3-lb mshsks med 8.00 mstr cntr 20 2-lb mshsks med 6.50-8.00 Spanish Hybrid ID/OR 50 lb sks Super Col 11.50 jbo 10.00-11.00 mostly 10.50 UT 50 lb sks jbo 11.00 WA 50 lb sks jbo 10.00-11.00 mostly 10.50-11.00 Sweets PE 40 lb ctns jbo 32.00 Red Globe Type NY 25 lb sks jbo 10.00-12.00 mostly 11.00 few 13.00 med 6.00-9.00 few 10.00 NEW CROP White MX 50 lb sks jbo 34.00-35.00 few loas 28.00 -POTATOES: MARKET ABOUT STEADY US1 SZ A WASHED OR BRUSHED UNLESS OTHERWISE STATED Russet Burbank ID bld 10 5-lb mshsks non sz A 8.25-8.50 mostly 8.50 50 lb ctns 40s 7.50-8.00 mostly 8.00 50s 7.50-8.00 mostly 8.00 60s 7.50-8.00 mostly 8.00 70s 8.00-8.50 80s 8.00-8.50 90s 8.00-9.00 mostly 8.50 100s 8.00-9.00 mostly 8.50 120s 8.00-8.50 Round Red MN/ND 50 lb sks 8.00-9.00 mostly 8.50 sz B 11.50-13.00 mostly 12.00 Round White ME 50 lb sks 4.75-5.50 mostly 5.00 lge 6.00 PA 50 lb sks 5.00-6.00 lge 6.00 NEW CROP Round Red FL 50 lb sks 13.50-14.00 sz B 18.00

**Phila. Herb**

PHILADELPHIA Terminal  
Prices as of February 21, 2001

Report Supplied By USDA

MISC HERBS -ANISE: 1/2 ctns CA 24s 16.00 -ARRUGULA: 4/5 bucrts bchd FL 24s 8.00-10.00 mostly 8.00-9.00 4 lb ctns CA Baby type 12.00 -BASIL: ctns bchd FL 15s 17.00-18.00 1 kg ctns bchd IS 12s 11.00-13.00 -CELERIC (CELERY ROOT): OFFERINGS INSUFFICIENT TO QUOTE -CHERVIL: OFFERINGS INSUFFICIENT TO QUOTE -CHIVES: 1 kg ctns bchd IS 12s 18.00 -CILANTRO: 4/5 bucrts bchd FL 30s 8.00-9.00 mostly 9.00 few 10.00 ctns approx 20 lbs TX 30s 13.00-14.00 ctns bchd AZ 60s few 14.00 MX 60s 10.00-

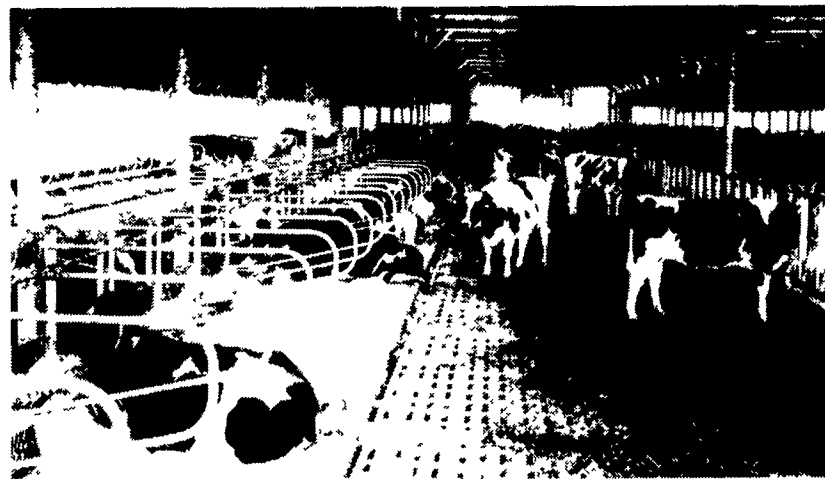
11.00 TX 30s 8.00-9.00 -DILL: ctns bchd TX 24s 11.00-12.00 crts bchd FL 24s few 9.00-10.00 -DRY ESCHALLOT: 10 lb sks Repacked Enroute 9.00 -HORSE RADISH: OFFERINGS INSUFFICIENT TO QUOTE -MARJORAM: 1 kg ctns bchd IS 12s 13.00 -MINT: crts bchd FL 12s 8.00-9.00 mostly 8.00 some low as 6.00 1 kg ctns bchd IS 12s 10.00 -OREGANO: 1 kg ctns bchd IS 12s 13.00 -ROSEMARY: 1 kg ctns bchd IS 12s 13.00 -SAGE: 1 kg ctns bchd IS 12s 13.00 -TARRAGON: 1 kg ctns bchd IS 12s 17.00 -THYME: 1 kg ctns bchd IS 12s 13.00 -WATERCRESS: ctns bchd FL 12s 7.00 24s 10.50-11.00 mostly 11.00

**Friend's Stockyard, Inc.**  
Accident, Md.

Report Supplied by Auction  
Monday, Feb. 19, 2001

STOCK STEERS AND BULLS 200-500 LBS. 50.00-106.00.  
STOCK HEIFERS 200-500 LBS. 66.00-95.00.  
SLAUGHTER STEERS GOOD TO CHOICE 74.50-80.60, MEDIUM TO GOOD 64.00-74.00, HEAVY CHOICE OVER 1450 LBS. 65.00-76.00.  
HOLSTEIN STEERS HEAVY CHOICE 57.00-68.50, LIGHT 48.00-68.00.  
SLAUGHTER HEIFERS GOOD TO CHOICE 75.00-80.50, MEDIUM TO GOOD 57.00-74.50.  
BULLS HEAVY 52.00-68.00, LIGHT 40.00-61.00.  
COWS UTILITY (HOLSTEINS) 41.00-47.25, COMMERCIAL TO GOOD 36.00-42.75, CULL COWS 34.00 AND DOWN.  
VEALS GOOD TO CHOICE 50.00-105.00, MED. TO GOOD 50.00-67.00.  
BOB CALVES 50.00 AND DOWN.  
HOLSTEIN BULL CALVES RETURN TO FARM 90-120 LBS. UP TO 160.00; HOLSTEIN HEIFER CALVES RETURN TO FARM 90-120 LBS. UP TO 355.00; BEEF CROSS CALVES RETURN TO FARM UP TO 175.00.  
HOGS, TOP QUALITY, UP TO 48.00.  
SOWS UP TO 38.00.  
LAMBS, CHOICE, UP TO 82.00.  
LIVESTOCK PRICES ARE ALL GIVEN PER HUNDRED WEIGHTS.

**Concrete Slatted Free Stall Barns**



The concrete slat with your animals comfort in mind. A large percentage of openings keep animals clean & dry, waffle slat for better footing. Concrete slats poured with 8,000 PSI concrete, steam cured, for extra strength

**Other Products**

- H & J Bunks
- Hog & Cattle Slats
- Bunker Silos
- Concrete Post & Beams
- Concrete Gutters

Give us a call for more information on hog, beef, dairy and heifer barns.

**McElwee's Livestock**

Home of Shippensburg Cownet  
3 Locations To Serve You

**Newburg**

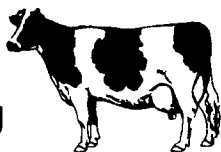
Mon. 9-4, Thurs. 9-2  
(717) 423-6869

**Woodsboro, MD**

Tues. 10-2  
(301) 845-6232

**Chambersburg**

Wed. 9-3  
(717) 267-3321



Receiving All Cows, Bulls, Steers, Calves  
Call For Daily Price Quotes



477 EAST FARMERSVILLE RD.  
NEW HOLLAND, PA 17557

(717) 355-2361

