

Public Auction

"watch for expanded listing"

**MONDAY,
MARCH 5, 2001
8:30 AM**

CONSIGNMENT AUCTION

Location: South Race St., Myerstown, PA from Lancaster Rt 501 North to Myerstown turn left on Park Ave 3 blocks to sale. From I-78 exit 3 take 501 South 8 miles to Park Ave turn right to sale site

TRACTORS

International Hydro 186, AC 'C' w/cultivators, John Deere 302 diesel utility w/rollbar, MF 85 diesel tncycle, Farmall H, John Deere L w/plow & cultivator.

TILLAGE

JD 220 18' centerfold disc, Brillion 12' cultmulcher, Brillion 21' wing packer, Krause 12' disc, IH 3x16 FH plow, Case 8' transport disc, White 549 5/6x18" reset plow, JD 2500 4x18 spring reset, 2) Glenco 9T soil saver, Hinkler 1120 field cultivator, Dunham 12' packer (late style), Kewanee 10' Cultmulcher w/cyl.

PLANTING

JD 8250 drill w/grass, IH 510 18x drill w/grass, JD FB-B drill w/grass, JD FB-B 17x7 drill, Oliver superior 13x7 5D grain drill w/grass, IH 510 grain drill 21x double disc w/cyl

HAY AND FORAGE

Loader mount bale grabber, Hesston 1091 9' haybine, Lely 2 star tedder, Gehl 2245 hydro swing haybine, JD 346 baler w/ejector, NI 255 pull type sickle mower, NH 256 hay rake, Gehl 600 harvester w/2RW & hay head, AC 5 bar hay rake, JD 3960 harvester w/hay head, NH 68 baler, NH 316 baler

MISCELLANEOUS

28" barn fan (never used), spring tooth harrow, Gehl 1580 forage blower, Stoltzfus 20' fertilizer drop spreader, 8' Toro reel mower, 3 pt. PTO woodsaw, 12' stalk shredder.

Consignments welcome on location

Thurs., Fri., & Sat. March 1, 2 & 3 8:00 a.m. to 4:00 p.m.

All items are sold "as is" and "where is" with no guarantees expressed or implied
TERMS: CASH complete payment on auction day. Checks accepted with bank letter of credit.

DAVID WENGER
717-866-2135



HARRY BACHMAN
717-867-1809

GLENN WENGER
717-866-2130

LEBANON VALLEY
AUCTION COMPANY, INC.
2051 Horseshoe Pike
Annville, PA 17003
RY000014-L

DENNIS GRUMBINE
717-866-2583

AUCTIONEERS:
Harry Bachman • AU-000033-L

Glenn T. Wenger • AU-002510-L
Blaine Rentzel • AU-761

PUBLIC AUCTION

FARM EQUIPMENT

MON., FEB. 26
AT 12 NOON


At 202 Oberholtzer Rd, Gilbertsville, PA 19529 (North of Boyertown turn East off Rt 100 at Martin's Quarry onto Township Line Rd, bear left at fork, then turn left onto County Line Rd)

Tractors

Farmall 656 diesel w/ fh, also factor 3 pt hitch; Farmall 706, 3 pt; Farmall Super C w/ mower, blade, cult, fh; Case David Brown 1410 w/ loader;

Tillage Equip

Int 3 pt 7 tooth chisel plow; Taylor Way 10' disc; Brillion 12' cultmulcher; Int 4 btm 16" fh plow;

Haying Equip

NI 5209 9' discbine; Gehl 2170 9' mower conditioner; JF CR320 tedder/rake (2 yrs old); NH 56 rake; Case IH 8520 in line baler w/ 8511 thrower; 5 wdn bale side wagons; steel bale side wagon; Little Giant 32' bale/grain elev; 2 single chain elev;

Grain Equip

Int 5100 soybean special 20 x 6" drill; Int 800 4 row planter; MF 510 combine w/ 13' grain head; McCurdy & Farnec NH 181 gravity flow wagons; Int 234 2 row mtd husker; (2) C & L 950 bu corn cribs w/ drying fans;

Forage Equip

NH 782 harvester w/ corn & grass heads; NH Wurlifeed blower; JD 112 & 714 forage wagons; Int 8 flail chopper;

Misc Equip

Int 101 manure spreader; Rhino 6' 3 pt rotary cutter; NI 519 8' 3 pt snowblower; Vicon 3 pt 1000 lb spreader; fh sprayer; 4 whl flat & dump trlrs; fuel tank; tractor tire chains; (10) 16' welded wire box panels;

Note: Be on time. NO SMALL ITEMS.

Visit us at www.zettauction.com

Terms -- Cash or Acceptable Check

SELLING FOR:

CLARENCE STANDHARDT

ZETTLEMYER AUCTION Co., LLC
820 Nursery St. • Box 215 (610) 395-8084 Fax (610) 395-0227
Fogelsville, PA 18051-0215 "Proven Service Since 1955"
AY-000131-L

Public Auction Register

Closing Date Monday 5:00 P.M.

of each week's publication

Internet Sale Register will be updated

every Sat. at 2:23 P.M.

SAT MAR. 3 9AM Tools, new, used & collectible Al Firepointville Fire Co, Lancaster Co, Pa Rt 897 4 miles S of Rt 272 Auction America, Ted Wolf #AU-3648-L Call Toll Free 1-888-325-8721

SAT MAR 3 9 AM In Port Trevorton, Snyder Co, Pa Sadies & Tack Orchard Hill Products, owner Roger A Lauver AU-002634-L

SAT MAR 3 - 9AM Construction equip, Rt 42 & 322 Black Horse Pike, Williamstown, NJ REH Absolute Auction Co

SAT MAR 3 - 9AM Late model Dodge pickup, 1940 Dodge car, Ford T bucket, camper, garden equip, tools, blocks, Nascar toys At 6071 Pinchtown Rd, Dover Pa Nancy Ebsenshade owner lke Eichelberger, Auct AU-001954-L

WITMAN AUCTIONEERS, INC. SNOW HILL FARM

ABSOLUTE PUBLIC AUCTION

"Everything Sells To New Owners - NO RESERVE"

• Excellent Clean Line of Late Model Tractors and Haying Equipment •

WEDNESDAY, MARCH 7, 2001

11:00 A.M.

BE PROMPT - NO SMALL ITEMS TO BE SOLD

INSPECTION OF ITEMS: Tuesday, March 6, 2001 - 10:00 A.M. - 4:00 P.M.

LOCATED AT: 415 Buck Run Road, East Fallowfield, PA, Chester County, East Fallowfield Township (Cochranville/King Ranch Area)

Call Auction Co. for brochure #7 w/detailed listing.

PAYMENT TERMS: Complete Payment Is Due The Day Of The Auction By Cash Or Certified Checks Personal/Company Checks Will Be Accepted With Bank Letterhead.

AUCTION FOR:

SNOW HILL FARM

Terry Muto, Farm Manager 610-384-6808

Auction By: WITMAN AUCTIONEERS INC.

Auctioneers, Appraisers and Liquidators

Jay M. Witman AU001127-L

Luke R. Witman

657 Fruitville Pike, Manheim, PA 17545

(717) 665-5735 • FAX (717) 664-2737

Visit Our Website:

www.witmanauctioneers.com

"Providing A Complete Professional Auction Service Since 1970"

PUBLIC AUCTION

FRIDAY, MARCH 16, 2001
9:30 AM

TRACTORS & FARM EQUIPMENT

LOCATION: 161 Stone Quarry Road, Leola, Pa, Just East of Brownstown on Rt. 772 Turn Right onto Stone Quarry Rd, First Farm on Left. From Rt. 23 in Leola, take Rt. 772 West just before Brownstown Turn Left onto Stone Quarry Rd, First Farm on Left. Watch for Sale Signs!

TRACTORS

4507 Deutz 4 wh drive on rubber (Kelley Loader & Steel wheels Selling Separate), Deutz D 6806 w/4-Post Canopy (on rubber-steel wh. Selling separate), JD 3020 D NFE. (On Steel), JD 2010 Crawler Loader.

EQUIPMENT

Farm Hand 817 Hammermill (Nice), NH 320 Baler w/thrower, IH 450 3-B Auto-reset Plow, 40' 6" Auger (PTO), 40' Zimmerman Elevator, NH 519 Spreader w/top beater, Betterbilt Vacuum Spreader, Capari PTO Irrigation Pump, 40 pcs. 3" x 20' long Pipe, 40 pcs 4" x 20' long Pipe, Misc. Pipe, Komet Gun & Fittings, 3 pt. Plastic Layer, Water Wheel Transplanter, 8' badger Manure Pump, 4 Small Silage Wagons, NH 717 Super Harvester w/2-row N & 1-row corn Heads, NH 717 Harvester w/2-row Head, Two NI 325 corn-pickers w/12 & 8 roll Husking Beds, NI 323 cornpicker, JD Feed Thrower, 4-Row IH 56 Cornplanter, JD 1240 Cornplanter, wagon w/Bale Racks, Flat Wagon w/10 T Gear, 5-Tooth 3 pt Chisel Plow, 5' Rotary Mower, 3 pt Field Cultivator, 4-Row S-Tine Cultivator, 2 & 4-row Cultivators, 2-Row Transplanter, Gehl Blower, Farm Trailer, Drag Disc, Cultipacker, Ontario Grain Drill, Side-delivery Hay Rake, Sprayer w/21' Boom, 1-Row Transplanter, Vegetable Conveyor, Two Outside Cattle Feed Bin Feeders, 275 gal. Fuel Tank, Steel Wheels for Skid Loader, Dosatron Animal Medicator, 12 Hog Feeders (various sizes), Hog Wire mesh Flooring, Hog Farrowing Crates, Metal Cattle & Hog Slat Forms, Plastic Poly Tank, 1-Row McD Cultivator, Two Wagon Gears (w/wooden & steel wh), Platform Scales, Ward 106 Walking Plow, Dbl. & Single Trees, 3-18-18 Liquid Fertilizer, 2-Hole Buch Cornsheller, Pressure Washer w/elec. Motor, Torch Set, Lincoln Welder, Horse Breaking Cart, Scrap Iron, Chicken Coops, & Egg Baskets, Three Bee Hives, Honey Extractor, **BUTCHER ITEMS:** Enterprise Meat Grinder, Sausage Stuffer, Scalding Trough.

New Alum. Diamond Plate Spring Wagon w/Cab

ANTIQUE FURNITURE & HOUSEHOLD GOODS

Oak Bedroom Suite, (Chest of Drawers, Dresser, & Wash Stand), Two Oak Beds, Two drop-leaf Tables w/Boards, Oak Bowed Ft. Dresser, Oak Wash Stand, Farm Table, Cedar Chest, Tall Butlers Desk, Wardrobe & Baby Cribs, CI Dinner Bell, Wood Butter Churn, Old Wanner Water Pump (Ephrata), Buffet, Old Benches, Maytag Wringer Washing Machine, Treadle Sewing Machine Gas Range, Apt. Size Freezer, Gas Space Heater w/pipe, Refrigerator, Two Sofa Beds, Strawberry Boxes & Picking Trays, Misc. Household Goods.

SALE ORDER: Starting with Furniture at 9:30 am, Not many small Items on wagon, we will be selling Equipment Early.

AUCTIONEER NOTE: Mr. Weaver is discontinuing Farming, mark your Calendars now, for a Sale you don't want to miss.

TERMS: Cash or Check with Proper ID.

SALE FOR:
WEAVER & ALMA FOX
(717) 656-7256

SALE CONDUCTED BY
WOLGEMUTH AUCTION (#2357)
Call Dennis (717) 656-2947 FAX (717) 656-6011
<http://www.wolgemuth-auction.com>
EMAIL: wolgemuth-auct@juno.com
Bob Wolgemuth & John Hess

7.3 ACRES LIMESTONE FARMLAND

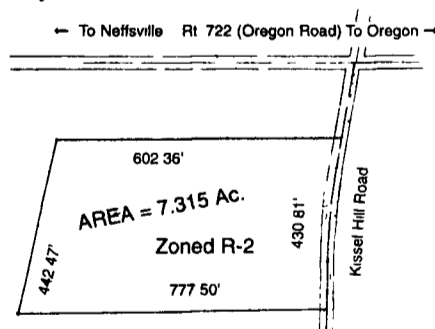
Zoned R-2

In Manheim Township

ABSOLUTE PUBLIC AUCTION

SAT., MARCH 10, 2001
Auction Time 1:00 P.M.

LOCATION: From Route 722 (Oregon Road), between Neffsville and Oregon turn South onto Kissel Hill Road to property on right, Lancaster County, PA.



Don't miss this prime farmland with approx. 430' of road frontage along Kissel Hill Road. Great possibilities for development with sewer line on the property and public water nearby. **This valuable property will be sold to the highest bidder regardless of price!** Check with Manheim Township with your ideas. Land is presently farmed.

NOTE: For appointment to see or for further information call Aaron E. Martin at (717) 733-3511

TERMS: 10% down payment at auction, balance at final settlement on or before May 1, 2001. Information herein believed to be accurate but is being used for advertising purposes only.

ATTORNEY: Edward Miller 299-1100

Auction By
THE LANDIS FAMILY
(John) (717) 949-3908

AARON E. MARTIN AUCTION SERVICE
Professional AUCTIONEERING
410 West Church Rd
Ephrata, PA 17522
(717) 733-3511
AU-002280-L

PUBLIC AUCTION

REAL ESTATE - MACHINERY DAIRY EQUIPMENT

TUES., MAR. 13, 2001
AT 10:00 A.M.

LOCATED IN MIFFLIN COUNTY, 1 1/2 MILES NORTH OF BELLEVILLE, PA., OR 6 MILES SOUTH OF REEDSVILLE, PA., TURN OFF ROUTE 655, ONTO S. DRY HOUSE ROAD, 1st FARM LANE

REAL ESTATE AT 11:00 A.M.

Approx. 45 acres of good tillable open Big Valley land in top stage of cultivation. Land fronts along Dry House Road.

Terms - \$20,000.00 down, balance upon final settlement within 30 days. RESERVE THE RIGHT TO REJECT ANY BID. FOR MORE INFORMATION, CONTACT OWNERS!

DAIRY ITEMS

Patz left hand drive barn cleaner w/approx 300 ft. chain, Dyna Vent hyd. manure pit ram, gutter guard for 40 stalls, Delaval complete pipeline milker w/approx. 300 ft. 2 in. s.s. pipe, 4 milker units, pump, etc., new in 1986, Fiberdome 3 tons feed bin, feed cart, round bale feeder, 8-24 in. barn fans.

FARM MACHINERY

N.H 465 dsl. skid steer, 315 hrs w/bucket and manure fork, Oliver 1655 gas tractor 3650 hrs. good cond., White 2-45 field boss dsl tractor 5000 hrs., NI 352 beater spreader w/hyd gate, Hesston 7020 harvester w/pickup, single and 2 r corn heads, N.H. no. 60 blower like new, Lamco and N.I. unloader wagons w/roofs, 3 bale rack wagons, N.H 273 hayliner baler w/thrower, N.H 489 haybine, Oliver 351-3 pt dyna balance mower, Bush Hog 6 ft rotary mower, Pequea 710-PTO tedder, N.H. 55 rake, White 5400 seed boss 4 row planter (good), M.F 82-3-16 in. plow, I.H. 420-3-14 in plow, White 255-10 ft disk, Brillion 10 ft. cultmulcher, J.D. 21 in. s.p. lawn mower, Craftsman 10 in. radial arm saw, 2 school desks, some horse bridles, halters, blankets and a small load of misc. farm items.

Terms: CASH OR APPROVED CHECK

Food stand

OWNERS:
ED AND CHERYL GLICK
717-935-5277

Mark Glick - Auctioneer
AU-349-L