

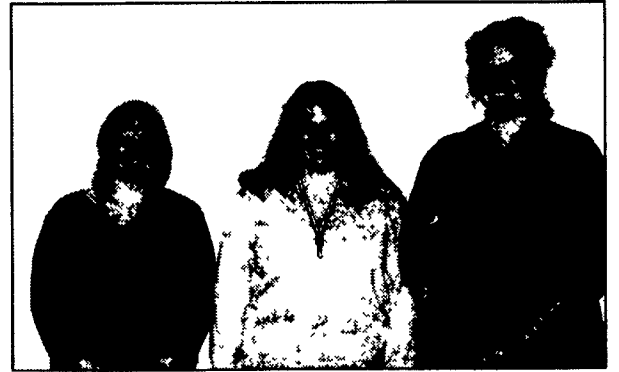
Junior Holstein 2001 State Convention

(Continued from Page A28)

**See
Lancaster
Farming
CowCam
Visit our Website
at www.
lancasterfarming.com**



150,000 pounds production award winners, left to right, Thomas Harwood, Sarah Day, and Todd Getz.



Speech contest senior division winners, left to right, Elvelta Kuhn, Katie Suba, and Desirae Hillegass.

Lancaster Dairy Days

LANCASTER (Lancaster Co.) — Lancaster Dairy Days will be held Feb. 20 and March 6, 9:30 a.m. to 2:30 p.m. at the Lancaster Farm and Home Center.

The theme for the first day is "Getting Fresh Cows Off To A Good Start." In today's competitive business environment and during periods of tight profit margins it is imperative that cows be healthy and productive. How well a cow does in her lactation depends greatly upon the care she receives in the months prior to and after calving.

Dr. Robert J. VanSaun, of the Veterinary Science Department at Penn State, will explain how nutrition and management affect cows' health, milk production, conception rates, and profits. He will have numerous tips for managing heifers, dry cows, closeup cows and recently fresh cows to help them have a productive and profitable lactation.

Good quality forage is also important in the management of these transition cows. Dr. Arlyn Heinrichs, Dairy and Animal Science Department at Penn State, will talk about physical and chemical factors that affect forage quality and cow performance. He will discuss the effect of processing on digestibility, plus the effect of particle size, molds, and mycotoxins on rumen function, cow health and production.

The event is being conducted by Penn State Cooperative Extension of Lancaster. Anyone interested in dairy is invited.



Pasture Mat

The Golden Standard In Cow Comfort




Why Pasture Mat?

Pasture Mat is tightly stuffed with rubber and sewn every 4" to prevent shifting

Proven most durable top cover

Least abrasive top cover on the market

Fits any stall.

Proven performance

Pack Mat

Reduce Sand • Increase Cow Comfort

- The perfect complement to any sand stall
- Owners report sand savings up to 80%
- Yielding surface does not allow sand to compact
- Prevents "digging out" of stalls

For details and installation with over 7 years experience, call:
Petersheim's Cow Mattresses
 117 Christiana Pike (Route 372), Christiana, PA 17509
 U.S. Pat. No. 5653195 **610-593-2242**
 Ask For Merrill or Sam

HDPE PLASTIC FABRICATORS for LEAK PROOF SYSTEMS

- Cross gutter systems
- Push-offs for free stall barns
- Lining of cisterns
- Various size boxes & liners




Gravity Flow gutter systems with 5/8" bottoms and 1/4" sides customized to fit your barn all seams welded low maintenance



Call for free estimates - we would be glad to show you operating facilities

HOMESTEAD EXCAVATING CO.

151 Meckville Rd., Myerstown, PA 17067
717-933-4366



BACKHOE TIRE SPECIALS

Galaxy		Titan	
	Ply		Ply
1-16.9-24	10	10-17.5L-24	8 Blem
1-17.5-24	10 Blem	2-18.4-24	8
3-17.5L-24	10	2-19.5L-24	10
5-17.5L-24	12	2-19.5L-24	8
1-17.5L-24	8	2-15.5-25	12
2-18.4-24	12	2-18.4-28	10
2-19.5L-24	14	2-21L-28	14
2-16.9-28	12	4-1400-24	12
1-18.4-28	10		
2-20.5-25	12		
1-20.5-25	20		

S.T.A. - Loader Tires

	Ply		Ply
2-19.5-24	10	1-1400-24	20 BF
2-21L-24	10	4-1400-24	12 DEN
4-15.5-25	12	2-1400-24	24 Const
4-17.5-25	12	4-1300-24	14 Gal
6-1300-24	12		
2-14.9-24	8		

Michelin R-4

2-17.5R24	M27	\$595
2-19.5R-24	M27	\$725
2-16.9R-28	M27	\$698
2-17.5R-25	X6LA	\$750
4-555-70R25	XLD L3	\$1,300
4-625-70R25	XLD L3	\$1,700

Firestone R-4

	Ply		Ply
2-175L-24	10		

JOE'S BATTERY & TIRE

2225 Union Blvd., Allentown, PA

Nat'l Wats: 1-800-437-4961 610-437-4961 FAX 610-437-1561

Increase bale size by 17%*

(And reduce your cost at the same time!)

ROLL 'EM with the



**5500
Rebel
BALER**

* The Vermeer® 5500 Rebel® Baler produces a 65" diameter bale that is 17% LARGER in size, when comparing the volume measurement of a standard 60" dia x 60" wide bale versus a 65" dia x 60" wide Vermeer bale



- True Bottom Drum design with horizontal bale starting system.
- Smooth wide, monofilament belts.
- Simple "hitch 'n go" system. Fewer adjustments to make. Easy to maintain.
- More hay per day; fewer bales to handle.

Check it out!

17%

more bale size than standard 5' x 5' bales



www.vermeerag.com

PENNSYLVANIA AVELLA Craig R. Sweger 724-587-5701 BLOOMSBURG WF Welliver 570-437-2430 CARLISLE Lil' Ponderosa Enterprises 717-245-2820 DAMASCUS Rutledge Repair 570-224-4319	FRANKLIN Oakland Products 814-678-1101 800-836-4261 FREEBURG Glenn Beidler 800-774-0796 570-539-8993 KITTANNING Crytzer Equipment Inc 724-543-2441	LIBERTY Bohnert Sales & Service 570-324-2431 MT. PLEASANT C.W. Neiderhiser Sales 724-423-4076 800-715-5586 PEACH BOTTOM Triple H Equip. Inc 717-548-3775 800-675-2019 (tripleh@epix.net)	PUNXSUTAWNEY London Farm Supply 814-938-7444 SAXTON Bob Wilkins 814-635-3392 WYALUSING William Beebe 570-746-3435 DELAWARE GREENWOOD Richard Wilkins 302-398-3059	MARYLAND KENNEDYVILLE Starkey Farm Equipment 410-348-2470 WEST VIRGINIA AUGUSTA D & G Equip. Sales Inc 304-496-8685 MORGANTOWN King & Sons Equipment 304-296-0180
--	---	--	---	--

See your local Vermeer Hay Specialist today and ask about how you can save!

CASH & INCENTIVE BONUSES

UP TO \$900.00

on Vermeer XL Series Balers and TwinRakes

Hurry!

The sooner you act, the better the bonuses