

35 TRUCKS AND TRAILERS

1972 Mack 10 wheeler, 14' dump 56. VW Adams 717-624-2592.

1999 Ford F-350 w/ Reading utility body & winch, V8 Triton, auto, only 3,300 orig miles, A/C, ex cond., \$20,000. 610-395-8084.

**MEASE MOTORS**

Mon.-Fri. 8am - 8pm; Sat. 8am - 4pm. Closed Sun  
Rt. 72 - 10 miles North of Lebanon. Exit #30, I-81  
717-865-4810 OR 1-800-382-7700



**97 CHEV. ASTRO CARGO VAN**  
V6, AT, A/C, PS, PB, C, 4x4, Blue & White, 54,000 Miles **\$10,495**



**92 FORD EXPLORER**  
4.0 V6, 4 Dr., 4x4, AT, A/C, PS, PB, EL, C, Maroon, 73,000 Miles **\$7,495**



**98 CHEV. 3500 EXPRESS VAN EXT.**  
350 V8, AT, A/C, Most Options, 15 Pass., 54,000 Miles, Burgundy **\$17,995**



**95 JEEP GRAND CHEROKEE**  
4x4 LIMITED, 4 Dr., 6 Cyl., AT, A/C, Most Options, Green, 64,000 Miles **\$12,995**



**96 GMC JIMMY**  
4 Dr., 4x4, V6, AT, A/C, Most Options, 63,000 Miles, Red **\$13,995**



**95 FORD E150 CONV. VAN**  
V6, AT, A/C, Most Options, 81,000 Miles, Green **\$10,500**



**2001 CHEVY K2500HD**  
LS, Extended Cab, 4x4, 6.6 Duramax Diesel, AT, A/C, CD, PW, PDL, Cruise, Tilt, P Mirror, 3.73 Ltd Slip Rear, 400 Miles, Dark Green **\$38,900**



**96 DODGE 2500, SLT**  
4x4, 5.9 Cummins Diesel, AT, AC, AM-FM-Cass, Cruise, Tilt, P Mrs., 8,800 GVW, 3.54 Limited Slip Rear, 75,000 Miles, Black & Silver **\$16,900**



**97 GMC K2500 SL**  
4WD 350 Vortec, AT, A/C, Cass, Cruise, Tilt, 8600 GVW, 3.73 Ltd Slip Rear, White, 41,000 Miles **\$16,900**



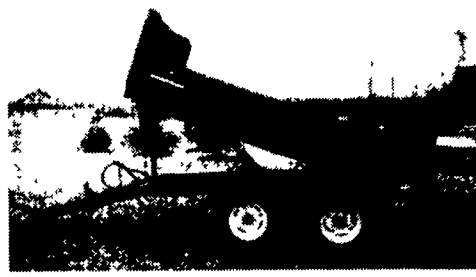
**99 GMC K3500 SL**  
4WD, Crew Cab Dually, 454 Vortec, AT, A/C, Cass, Cruise, Tilt, 10,000 GVW, Local Truck, White, 47,000 Mi **\$23,500**

**MARTIN'S AUTO SALES**

1025 W. Main St. New Holland, PA 17557  
(717) 656-6621

**FARM DUMP TRAILERS**

(Direct from the Manufacturer)

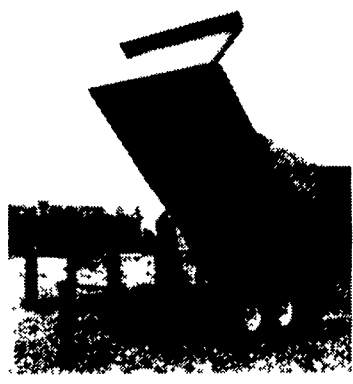


**6-Ton Dump Trailer**

- 10 ft. x 7 ft.
- Floating Tandem Axle
- 3 ft. Front, 3 ft. Tailgate & Grain Chute
- 16 in. Extendable Sides
- 10 ga. Floor & Sides
- 11Lx15 Flotation Tires
- 2-Way 4 in. x 24 in. Hydraulic Cylinder includes hoses

**7-Ton Road Dump Trailer**

- Fifth wheel or bumper type
- 16 ft. x 8 ft. deck 3 ft. front rack and pockets side & back
- D.C. hydraulic pump & battery mounted in locking tool box.
- 12 ton drop leg jack
- 10 ga. floor
- 6x3x3/16 tube main frame
- Sealed beam lighting
- 7000 lbs. per axle rating
- Electric brakes on both axle
- 16" tires on white spoked rims
- \$6400 U.S. delivered in Northeast U.S.A.



**BERKELMAN'S WELDING**

RR 7, AYLMEER, ONTARIO, CANADA N5H 2R6  
(519) 765-4230

7511 Allentown Blvd. Harrisburg, PA 17112

**AFFORDABLE CARS AND TRUCKS, INC.**

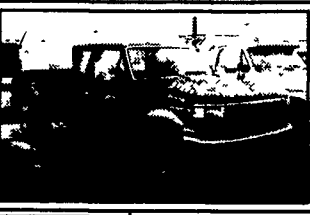
717-652-1925  
FAX 717-652-4888  
www.affordablecarandtruck.com

75 TRUCKS IN STOCK

**"You Gotta Believe!!"**

Exit 27, Rt. 81; Rt. 22 East of Harrisburg; 3 Miles North of Hershey

**94 Ford F250 XLT 4x4** Ext Cab, Turbo 7.3 International Diesel Fully Loaded, Showroom Condition, 2 Tone Firehorn/Silver, A Must See! 100,000 Mi **\$14,500**



**96 Ford F350 XLT** Lariat 4x4, Crew Cab, Powerstroke 7.3 Diesel w/5 Speed, AC, PW & All Options, 100,000 Mi, Absolutely New In Every Way **\$21,900 Offer**



**93 Ford F250 XLT 4x4** AT, PS, PB, AC, PW & More, 5.8 V8, 100,000 Mi, 1 Owner, 2 Tone Green/White, Extra Nice Throughout **\$8,995**  
Also 97 F250 4x4 Like Above w/5 Speed, Only 62,000 Miles **\$11,995**



**87 Ford F350 4x4** International Diesel, Crew Cab, AT, A/C, 4:11 Rears, 2-Tone w/Cap, Extra Clean, 124K **\$10,500**  
Also 92 XLT Crew 4x4 Flawless - \$15,995



**86 Ford F-350 XLT Lariat** Crew Cab Dually, International Diesel, AT, A/C, Loaded, Beautiful Condition, Only 80K Mi **Sale Price \$7,995**



**87 Chev C-20 Silverado** 4x4 Suburban, 8,800 GVW, 3rd Seat, 350, AT, Dual Air, All Power & Flawless with No Rust, 100,000 Mi **\$6,995**



**95 Dodge Ram 2500** 4x4, Cummins Diesel, SLT Package, Absolutely Perfect in Every Way! Only 90K, AT, AC, PS, PW & More **\$16,900**



**85 Chev C20 4x4 Silverado** H.D. 8,600 GVW, AC, PW, PDL, Stereo, Alloys, 350 5 Speed, No Rust, Looks & Drives New, 100,000 Mi. **\$5,495**



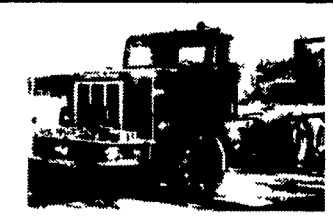
**98 Dodge Ram 2500 Quad Cab** 4x4, Cummins, Turbo Diesel, AT, AC, PW, Absolutely Like New. All Highway Driven, 115K **\$21,500**



**97 Dodge Ram 2500 H.D.** 4x4, Ext. Cab, SLT, Cummins Diesel with Rare 5 Speed, AC, PDL, PW & All Options, 1-Owner, Garaged, Showpiece, 100,000 Mi. **\$19,995**



**93 Chev 2500 H.D.** Silverado, 4x4, 350, AT, 8,600 GVW A/C, Most Options, Mint Cond., 108K Mi. **\$10,500**



**1976 INTERNATIONAL PAYSTAR 5000**, 6-71 Detroit Engine, RTOF - 958 LL Fuller, SSHD - 6.83 Ratio, 11R-22.5 Tires, 16,000 Front Axle 44,000 Rears, Stock #1359 **Price \$4,900**



**1991 FREIGHTLINER DAYCAB FLD-120** 3406 B Cat Engine 350 Horsepower, Jacob Brake, RTO-14609B Fuller Roadranger Transmission SQ-100 Rockwell 3.73 Ratio Rears, Air Ride 11R-24.5 Tires on Aluminum Rims Stock #1306 **Price \$12,900**



**1979 KENWORTH W900 A** Detroit 8V-92 With Jake Engine Needs Work, Rebuilt RTO - 12515 Fuller Trans., SSHD 44,000 Rockwell 4.11 Ratio 11R-24.5 Tires, Budd Wheels, 267,247 Original Mileage, Stock #361 **Price \$2,900**



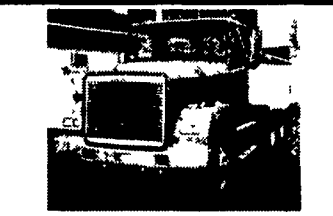
**1983 INTERNATIONAL S-MODEL CONVENTIONAL** 9.0 Liter International Engine, Automatic Transmission, Single Speed Rear, Air Brake, 28,000 GVW, Good Farm Truck **\$4,900** Truck Sold With Or Without Septic Pusher Body Stock #1334



**1985 INTERNATIONAL S-MODEL**, 6.9 Diesel Engine, 5 Speed Transmission, Single Speed International Rear, 10,000 R20 Tires, Non-Air Brake, Under CDL, 19,500 GVW, 16 Foot Body, Lift Gate, Stock #1352 **\$3,900**



**1988 INTERNATIONAL S, Model DT - 466** Engine, 177,373 Original Miles, 6 Speed Transmission FS - 6106 A, Single Speed Rear, 11R-22.5 Tires, Budd Wheels, 238 Inch Wheel Base, 24 Foot Body with Shelves, Stock #1360 **Price \$7,900**



**1986 FREIGHTLINER FLD - 112 DAYCAB** Cummins NTC 300 BC, 9 Spd Trans., SQHD Rockwell 3.73 Rears, 11R-24.5 Tires, Budd Wheels, New Paint, Mileage 526,116, Stock #1203 **Price \$6,500**



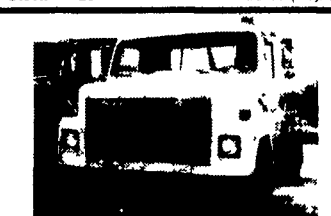
**1992 International 8300 Daycab** Series 60 Detroit 11.1 350 HP, International SD-PS-9N 9 Speed Transmission, N-400 - 4.10 Ratio Rears Spring Ride 295-75-22.5 Tires, Budd Wheels, Stock #1326 **Price \$10,900**



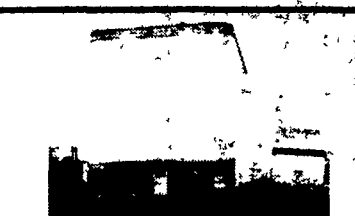
**1971 TRAILMOBILE LOG TRAILER** Built in Headache Rack, New Straps Stock #1304 **Price \$1,500**



**1986 MACK MIDLINER**, Renault 185 HP Engine, Spicer, 5 Speed Transmission, Single Speed Rear, 11R-22.5 Tires, Budd Wheels, 24 Foot Stake Body, Side Gates Stock #1340, **Price \$3,900**



**1978 INTERNATIONAL**, Single Axle, Cummins NTC 230 HP, 10-Speed Road Ranger Transmission, R-170 Rockwell Rear, 23,000 Pound, 295/75/22.5 Tires, Dayton Wheels, Stock #1315 **Price \$2,900**



**1981 FRUEHAUF TRAILER** 45 Ft., 13' 2" High, 96" Wide, 11R-22.5 Tires, Dayton Rims, Great For Storage, Stock 1261 **Price \$2,000**

**FIRESTONE MOTORS, INC.**

330 S. THIRD ST. • LEMOYNE, PA 17043 • (717) 763-7721 • TOLL FREE 1-888-668-6778

www.firestonemotors.com