

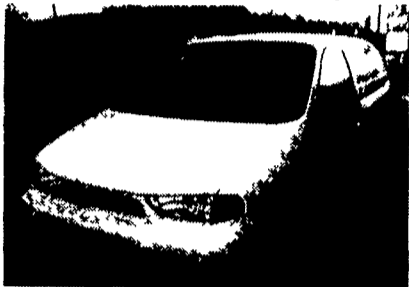
HARD TO FIND TRUCKS!

'88 Chev Suburban



4x4, 9 Pass Diesel **\$7,990**

'96 Ford Windstar Cargo Van



3.8 V6, Auto, AC, 53,000 Miles **\$7,990**

"THE TRUCK PEOPLE"
Over 30 Pre-owned Trucks In Stock!
BOYER MOTOR CO.
1065 S. State Street
Ephrata, PA 17522
717-738-1885 1-800-786-1835

FOR SALE



1975 GMC 3500
9 FT. EBY ALUM. CATTLE BOX
With Side & Rear Ramps,
Electric Winch
Call 717-865-7575

USED TRUCKS & CARS

88 DODGE B350
Stake Body, AT, V8
\$5,150 or \$1,289 Down

84 FORD BRONCO
Blue & White
\$4,650 or \$1,163 Down

Vans Available For Amish Hauling.
Cars, Trucks & Vans in Every Price Range
Financing Available.
Tag, Title & Notary Service

86 FORD F250
302 AT w/OD
\$4,850 OR \$1,455 DOWN

Dozens of Cars & Trucks - Call For Complete Listing
88 GMC S15, 5 sp, 4 cyl, w/cap
..... \$2,450 or \$735 Down

CAR CORRAL
925 Robert Fulton Hwy Quarryville, PA 17566
717-786-5131
Mon-Thurs 9-3 Fri 9-9 Sat 9-3



'89 Volvo 60 series, 12.7 Detroit eng w/Jake brake, 430hp, air ride, big bunk sleeper, single rear axle, recent OH, new rear end, vg cond, \$8000 obo. 814-766-2236

'96 3500 Dodge dully, extended cab, 4x4, 5 spd, ex cond, 78,000 mi. 570-398-2688

1968 INT 1800 Loadstar, 4WD w/steel flatbed dump, 25,000 GVW, 60,000 org mi, 570-683-5411.

'94 Chevy Kodiak, 3116 Cat eng, 5 spd, 18,000 GVW, 16' van body, AC, very nice. 717-786-2839

'88 Chevy Silverado 1500, ext cab, 4x4, long bed, \$4,250. 717-867-4896.

'00 Dodge 3500 12 pass, maxi van, 360 auto, PS, PB, PW, PDL, cruise, tilt, dual air, AM-FM cassette, black, 24,000 miles, excellent condition, \$19,900. 717-733-2873

'00 Chevy Express LS 15 pass, 350 auto, PS, PB, PW, PDL, cruise, tilt, dual air, AM-FM cassette, privacy glass, 12,000 miles w/balance of factory warranty, \$22,500. 717-733-2873

'96 Dodge SLT 1500 short whl base 8 pass, van, 318 auto, PS, PB, PW, PDL, cruise, tilt, air, AM-FM cassette, new radials, maroon & silver, 84,000 one owner miles, excellent condition, \$8,975. 717-733-2873

1988 Ford F350 4x4, 9 ft., Alum., flatbed, 460 V8, A/C, 5 spd., Meyer, P.A. plow, 61K Miles, White, \$10,900 717-949-2812.

1995 Dodge Ram 3500 Cummins Turbo diesel, 5 spd., 4x4, 11ft. flat bed, A/C, 11,000 GVW, 76K miles, Red. \$18,800 717-949-2812.

1999 Ford F350 Quad cab, power stroke diesel, 6-speed, 4x4, XLT 95K Miles \$24,900. 717-949-2812.

GMC 14' box truck, 1974, \$2,000. 653 Det dsl eng \$750. 215-348-5514.

1980 GMC single axle tractor, good shape, \$2800 obo. '90 Low boy trailer, tag-a-long, 20 ton, completely reconditioned, \$9000 obo. 610-273-2946

Centerville 18 ton tag-along trailer, new tires, as new condition, \$7,900. 410-833-1600 days, eves 410-374-9469.

IH 4700 Rollback & Tow Bar Century V.G. Cond., 610-286-6371

1978 Ford C800, 27,500 GVW, 3208 Cat dsl, 5+2, \$3,500 OBO. 717-656-7305.

1974 Ford F800 14' Grain Body, Hoist, Air Brakes, 5+2 351 Inspected. Good Farm Truck. \$4,800 717-789-4310

'94 GMC 2500 Sierra SLE, 4x4, extended cab, short bed, 59,000 mi, \$15,200. 717-867-8401

88 Mack Superliner w/ sleeper, 500 V-8, 9 spd, good cond, w/wetline. 570-253-2042.

'81 IH cabover, 400 Cummins, 9670XL, wetline, \$4000. 717-534-1253

1985 Eby 6-horse gooseneck alum stack trailer, has removeable dividers & ties, hyd brakes, rear ramp, side ramp, escape door, tinted plexiglass closures, great trailer for carriage or show barn, exc cond. 717-235-1205.

'89 Int w/14' stake body, 7.3L dsl, Int motor w/116,000 mi, asking \$9,500. 215-295-8748, 215-794-9650 after 7pm.

'80 Chevy pickup w/'88 305 motor, auto, AC, class II, inspected to 7/01, good work truck, reliable transportation, asking \$1500. 717-354-8450

Dry lime & fertilizer spreader truck, 1973 Brockway, 8V71 Detroit, 10sp Road Ranger trans, 14' Stoltzfus spreader body w/32' sowers. \$6500 OBO. 717/733-7674.

AL HAMILTON USED TRUCK SALES

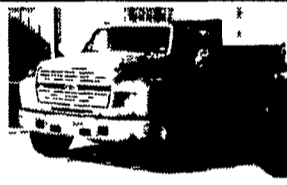
P.O. Box 157 55 Doe Run Road, Manheim, PA 17545

Phone: 717-665-7145 Fax: 717-665-2137

"CLEANEST TRUCKS AROUND"



'86 FORD LN800
New 10' Dump, 3208T, 250 HP, 5 Spd. Trans., 2 Spd Rear, Custom Int., 33,000 GVW **\$18,500**



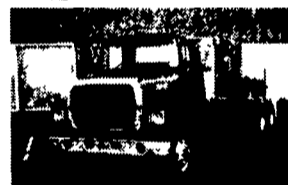
'94 FORD F-600 14' Dump, 5.9 Cummins, 5 Spd Trans, 2 Spd Rear, Hyd Brakes, A/C, 25,500 GVW **\$18,500**



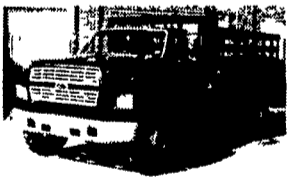
'94 FORD LNT 9000 C&C
L-10 Cummins 280 HP, 9 Spd Trans, Air Brakes, A/C, 264 WB, 192" C.A., 58,000 GVW **\$30,500**



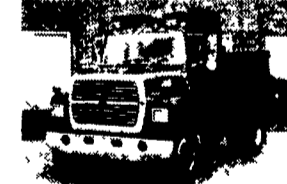
'87 FORD LN 800 C&C
7.8L Ford Diesel, 240 HP, 6 Spd Trans, Custom Cab, A/C, Air Brakes, 222 W B, 156 C.A., 33,000 GVW **\$14,500**



'95 FORD LNT 8000 C&C
8 3 Cummins 225 HP, 9 Spd Trans, Air Brakes, A/C, Custom Int, 260 WB, 192 CA, 58 GVW **\$28,500**



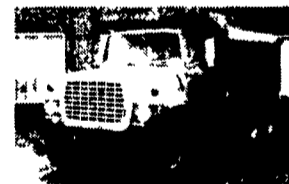
'93 FORD F-600
14' Flat Dump, 5.9 Cummins, 160 HP, 5 Spd Trans, Hyd Brakes, A/C, 25,500 GVW **\$17,500**



'89 FORD LN800
New 10' Dump, 7.8L Engine, 240HP, 6-Spd. Trans, 33,000 GVW **\$21,500**



'87 INT S-1900 C&C
DT-466, 215 HP, 7-Spd Trans, Air Brakes, A/C, 138 C.A., 206 WB, 32,800 GVW **\$14,500**



'73 FORD LT9000
14' Dump, 238 Detroit, RT9513 Trans, Engine Brake, Pintle Hook & Airline To Back, 54,900 GVW **First \$9,500 Takes Me Home**



'84 INT. 2300
L-10 Cummins, 7 Spd Trans, AC, PS, Air Brakes, New 10' Dump, 35,000 GVW **\$19,500**



'94 FORD LN800
New 10' Dump, 8 3 Cummins 210 HP, 6 Spd Trans, Air Brakes, Custom Int, 35,000 GVW **\$27,500**



'73 GMC 6000
22' Rollback, 350 Gas, 5 Spd Trans, 2 Spd Rear, Hyd Brakes, 26,000 GVW **\$9,500**



'94 FORD LNT 8000
26' Van Body, Lift Gate, Side Door, 8 3 Cummins, 225 HP, 9-Spd Trans, Custom Cab, A/C, 58,000 GVW **\$31,500**



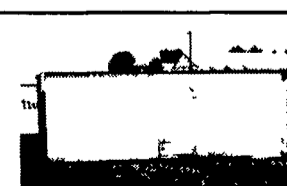
'95 INT. 4900 C&C
DT-466, 210 HP, 6-Spd Trans, Custom Int, A/C, 254" WB, 185 C.A., Air Brakes, 35,000 GVW **\$20,500**



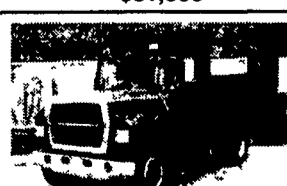
'94 FORD F600 C&C
5.9 Cummins, 5 Spd Trans, 2 Spd Rear, Hyd Brakes, A/C, 174 W B, 108 CA, 25,500 GVW **\$14,500**



'81 INT 1700
345 Gas, 5 Spd. Trans, 2 Spd. Rear, Hyd Brakes, 138" C.A., 218" W.B., 25,000 GVW **\$6,000**



USED VAN BODIES
18'-26'
Starting At \$2,000



'88 FORD LN800
New 10' Dump, 7.8L Ford Diesel, 240 HP, 10 Spd. Trans, Custom Int. air Brakes, 35,000 GVW **\$19,500**



'93 INT. 4900 C&C
DT-466 6 Spd Trans, Custom Int A/C, 186 CA, 254 WB **\$17,500**



22' MORGAN REEFER
MD II Thermo King, Electric Stand-By, Roll-up Door, Right Side Door **\$5,000**