

Belknap Livestock

Belknap, Pa.
 Report Supplied By USDA, PDA
 Wednesday, Feb. 14, 2001
WEDNESDAY CATTLE 98,
 CALVES 84, HOGS 77, SHEEP 4,
 GOATS 8. LAST WEDNESDAY, NOT
 AVAILABLE.
 CATTLE: No comparison with last
 Wednesday's auction.
 SLAUGHTER STEERS: Choice 2-3
 couple 1230-1250 lbs 75.00-76.00. Stan-
 dard 1-2 couple 54.50-55.00.
 HOLSTEIN STEERS: Choice 2-3
 couple 1238-1382 lbs 66.00. Select 2 indi-
 vidual 60.00.
 SLAUGHTER HEIFERS: Choice 2-3
 1040-1450 lbs 68.00-75.00. Standard 1-2
 few 53.00-63.25.
 SLAUGHTER COWS: Breakers 75-
 80 percent lean 42.50-46.00. Boners 80-
 85 percent lean 40.00-44.00. Lean 85-90
 percent 36.00-42.00. Shells down to
 25.00.
 SLAUGHTER BULLS: Yield Grade 1
 few 1290-1930 lbs 58.75-67.00. Yield
 Grade 2 few 1150-2010 lbs 48.00-57.00.
 FEEDER HEIFERS: Medium few 1-2
 440-615 lbs 61.00-77.50.
 FEEDER BULLS: Medium 1-2 few
 375-550 lbs 70.50-85.00; few 770-840 lbs
 58.00-59.00.
 VEALERS: Good few 158-292 lbs
 72.00-97.00. Standard and Good 75-115
 lbs 31.00-58.00. Utility 60-75 lbs 25.00-
 33.00.
 RETURNED TO FARM: Holstein

bulls Number 1 95-125 lbs 127.50-147.50,
 mostly 130.00-140.00. Number 2 85-130
 lbs 60.00-130.00. Holstein heifers
 Number 1 few 90-105 lbs 310.00-335.00.
 Number 2 80-115 lbs 190.00-280.00. Beef
 type bulls and heifers 70-95 lbs 125.00-
 190.00.
 BARROWS AND GILTS: PERCENT
 LEAN WEIGHT PRICE 49-54 220-270
 lbs 39.00-42.00 40-45 220-270 lbs 35.00-
 38.50
 SOWS: US 1-3 Individual 536 lbs
 26.00
 BOARS: Individual 684 lbs 12.50
 FEEDER PIGS: US 1-3 35-45 lbs
 25.00-31.00 per head. Few 50-70 lbs
 34.00 per head 115-135 lbs 33.00-37.50
 per cwt
 SHEEP: No market test.
 GOATS: All sold by the head. Billies:
 Medium individual 80.00. Kids: Small
 few 11.00-37.00.

Frederick Livestock

Frederick, Maryland
 Report Supplied by Auction
 February 12, 2001
 SLAUGHTER COWS: 96 HEAD,
 1.00 HIGHER. UTILITY 42.50-47.75,
 CANNERS 38.00-43.75, SHELLY 38.00
 DOWN.
 BULLS: 5 HEAD. YG#2 1500-2050
 LBS. 54.50-58.75, 1 2485 LBS. AT 55.00.
 FED STEERS: NONE.
 FED HEIFERS: 1 CHOICE HOL-
 STEIN 1360 LBS. AT 57.75.
 CALVES: 175 HEAD, GOOD

SLAUGHTER. 90-120 LBS. 65.00-
 78.00, CULLS 80-100 LBS. 40.00-60.00,
 WEAK AND LIGHT 40.00 DOWN;
 HOLSTEIN BULLS RETURNING TO
 FARM 10.00-15.00 LOWER. #1 90-120
 LBS. 140.00-162.00, 80-90 LBS. 100.00-
 125.00; #2 90-120 LBS. 87.00-137.00, 80-
 90 LBS. 75.00-95.00; HOLSTEIN
 HEIFERS 20.00-40.00 HIGHER. #1 85-
 120 LBS. 300.00-360.00, HOLSTEINS X
 140.00-240.00, 70-85 LBS. 135.00-
 240.00; BEEF X BULLS 90-120 LBS.
 170.00-220.00; BEEF X HEIFERS 95-
 110 LBS. 140.00-187.00.
 BUTCHER HOGS: 36 HEAD. #1
 AND 2 220-275 LBS. 36.00-37.00, 1 LOT
 TO 38.50, 280-300 LBS. 39.00-39.50, #1
 AND 3 300-380 LBS. 30.00-33.50.
 SOWS: 5 HEAD. 400-600 LBS. 28.00-
 30.00; THIN 25.00-27.00.
 BOARS: 10 HEAD. 220-300 LBS.
 20.00; 2 AT 29.00 AND 30.00; 325-400
 LBS. 12.00-16.50.
 STOCK CATTLE: MAINLY BULLS
 OFFERED. STEERS, NONE.
 HEIFERS: 2 HOLSTEINS 160-180
 LBS. 164.00-168.00, 2 HOLSTEIN X
 102.00 AND 121.00.
 BULLS: 1 305 LBS. AT 99.00; HOL-
 STEINS 350-400 LBS. 71.00-79.00,
 MED. BEEF 400-600 LBS. TO 65.00.
 SHEEP: 40.00-61.00.
 LAMBS: 11 HEAD. CHOICE 105-120
 LBS. 83.00-91.00, 60-80 LBS. TO 116.00;
 YEARLINGS 100-120 LBS. 79.00-87.00
 GOATS: 7 HEAD. LARGE BILLIES

85.00-104.00, MED. 55.00-90.00,
 SMALL 40.00-50.00.
 PIGS AND SHOATS: 3 165 LBS.
 36.00.

Mercer Livestock Auction

Mercer, Pa.
 February 13, 2001
 Report Supplied By PDA
 CATTLE 344...(PDA)..Compared
 with last week's sale..steers steady to
 strong, cows .25 to 2.50 higher.
 STEERS: few High Choice and Prime
 2-4 1185-1290 lbs 78.00-81.50, Choice 2-
 3 1000-1460 lbs 74.50-79.00, Select 1-3
 66.00-75.00, Standard 1-2 61.00-65.50.
 HOLSTEIN STEERS: few High
 Choice and Prime 2-3 1390-1595 lbs
 69.00-70.50, Choice 2-3 1200-1635 lbs
 64.00-68.25, one Standard 1-2 54.00.
 HEIFERS: High Choice and Prime 2-
 4 100-1400 lbs 77.00-81.25, Choice 2-4
 975-1350 lbs 71.50-78.50, Select 1-3
 63.50-69.00, few Standard 1-2 55.00-
 57.00.
 COWS: Breakers 75-80% lean 43.00-
 51.50, couple 54.50, Boners 80-85% lean
 41.25-46.50, Lean 85-90% lean 37.00-
 43.25. Shells down to 26.50.
 BULLS: few Yield Grade 1 1430-1820
 lbs 54.50-65.50, Yield Grade 2 1075-2485
 lbs 45.50-54.50, few down to 35.00.
 FEEDER CATTLE: STEERS: Large
 2 820-1065 lbs 5500-62.50, Medium 1
 375-550 lbs 90.00-98.00, 550-700 lbs
 79.00-85.00, Medium 2 450-700 lbs
 60.00-85.00; HEIFERS: few Large 2 700-
 860 lbs 50.00-55.00, Medium 1 325-550
 lbs 79.00-86.00, Medium 2 335-550 lbs
 63.00-82.00, 550-800 lbs 50.00-68.00;
 BULLS: Medium 1 375-550 lbs 81.00-
 95.00, Medium 2 350-550 lbs 56.00-
 85.00, 550-750 lbs 60.00-71.00.
 CALVES 100...VEALERS: Standard

and Good 75-110 lbs 25.00-60.00, Utility
 55-80 lbs 10.00-20.00.
 FARM CALVES: No 1 Holstein bulls
 90-115 lbs 135.00-155.00, No 2 80-115 lbs
 60.00-130.00; couple No 1 Holstein heif-
 ers 90 & 115 lbs 320.00 & 325.00, few No
 2 80-110 lbs 215.00-280.00.
 Few beef type bulls and heifers 75-110
 lbs 80.00-170.00.
 HOGS 72...BARROWS AND GILTS:
 49-54% lean 250-260 lbs 39.25-42.75, 45-
 50% lean 220-270 lbs 36.25-38.00.
 SOWS. few US 1-3 335-440 lbs 28.50-
 33.00.
 BOARS: one 555 lbs 13.00.
 FEEDER PIGS 0...NO MARKET
 TEST!
 SHEEP 2...SLAUGHTER SHEEP:
 few 20.00-25.00.
 GOATS 4...NO MARKET TEST!

Livestock Cooperative Auction Market Of North Jersey

Hackettstown, N.J.
 Report Supplied by Auction
 Tuesday, Feb. 13, 2001
 CALVES .10-3.00.
 COWS 25-50.
 EASY COWS .05%- .39%
 FEEDERS 300-600 LBS .27-1.02%
 HEIFERS .23-.65.
 BULLS .49%- .61.
 STEERS .49-.76.
 HOGS .35-.43.
 ROASTING PIGS EA 29.00-35.00
 EA.
 BOARS 10- 28
 SOWS .23%- 29
 SHEEP .29-.81
 LAMBS EA 83.00-90.00
 LAMBS PER LB. .58-1.60
 GOATS EA. 35.00-165.00.
 KIDS EA. 10.00-62.50
 HIDES EACH 14.00-42.00 EA
 TOTAL: 487 HEAD.

LIME

- Dump Truck Loads
- Spreaders Available

Rohrer's Quality Hi-Cal Damp Lime

88% CCE	Calcium Oxide 41%
ENP 67	Magnesium Oxide 6%
55%	Passing 100 Mesh
65%	Passing 60 Mesh
98%	Passing 20 Mesh

NOW ONLY \$4.50 Per Ton (Picked Up)

Rohrer's Quarry Inc.
 Lititz, PA • (717) 626-9760

★ CRUSHED STONE & READY-MIX CONCRETE ★

Registered with PA Department of Agriculture

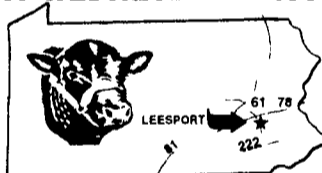


LEESPORT FARMERS MARKET

LEESPORT, BERKS COUNTY, PA 19533 (610) 926-1307

LIVESTOCK AUCTION

EVERY WEDNESDAY - 1:00 P.M.



Farmers Market 9:00 AM to 8:00 PM
 Flea Market 7:00 AM to ??

visit our website: www.leesportmarket.com

WHAT'S AHEAD FOR CORN & SOYBEAN FUTURES

- We Deal In Futures And Options
- Our Only Business is Commodity Futures and Options
- In Allentown Area and Same Principals For Over 25 Years
- When Buying options, your risk is limited to the loss of the premium paid plus all transaction costs. Buying futures and options have inherent risks and should be done only with risk capital

FOR INFORMATION..LITERATURE...
 CHARTS... PLEASE CALL

(610) 366-7979 or 800-543-8939

LEHIGH VALLEY FUTURES INC.

Commerce Plaza, Suite 249, 5000 Tilghman Street,
 Allentown, Pa 18104

e-Mail: ivfuture@ptd.net web site www.lvfutures.com

The risk of loss in trading futures and options on futures can be substantial. Futures and options trading may not be suitable for everyone. You should carefully consider the risks in light of your financial condition in deciding whether to trade.

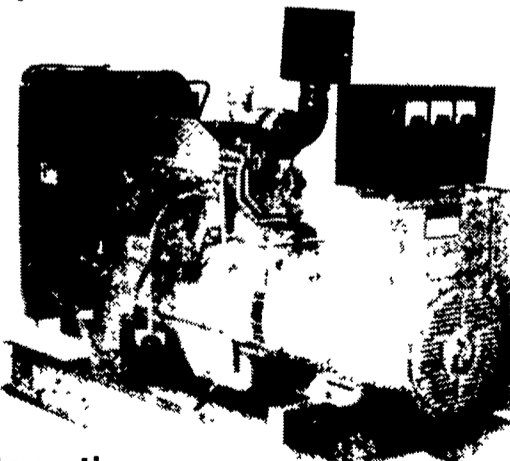
Clean, fresh, quality drinking water on
 your farm could make a bigger
 difference than you think.

Martin
 WATER CONDITIONING
 Your Water Treatment Center

Myerstown • Brownstown
 • Stoystown • Cleona
 • Quarryville
800-887-7555
 Serving
 PA NY - NJ - DE - MD

Agricultural Generators

Spectrum Detroit Diesel



Automatic
 L.P. Gas, Diesel,
 Natural Gas Generators
 5 to 2,000 KW



P.T.O.
 Generators
 25 to 135 KW Units
 In Stock!

Service - Rental - New & Used Units In Stock

PENN POWER SYSTEMS
 Power Generation Systems Specialists

330 Fonderwhite Road, Lebanon, PA 17042
 Call Leonard Martin **717-273-4544**
 Fax **717-273-5186**