

**Phila. Vegetable**

PHILADELPHIA Terminal  
February 15, 2001

Report Supplied By USDA

**VEGETABLES -ARTICHOKES:** MARKET ABOUT STEADY ctns CA Globe Thornless 18s 17.00-18.00 24s 21.00-22.00 -**ASPARAGUS:** MARKET SLIGHTLY HIGHER pyr ctns/crts 28 lb bchd MX Green exlge 60.00 lge few 54.00 std 54.00 11 lb ctns/crts bchd CA Green lge 26.00-27.00 std 27.00-28.00 sml 24.00-26.00 MX Green lge 26.00 std 30.00 sml 28.00 -**BEANS:** OFFERINGS LIGHT buctns/crts FL Round Green Type Machine Picked fair appear 22.00-25.00 30 lb crts MX Round Green Type Machine Picked 34.00 -**BEETS:** MARKET ABOUT STEADY ctns bchd TX 12s 11.00 25 lb filmbags lse CD med few 6 50-7.00 -**BROCCOLI:** MARKET HIGHER ctns AZ bchd 14s 9.00 CA bchd 14s 9.00-11.00 mostly 9.50-10.00 20 lb ctns lse CA Crown Cut 12.00-13.00 -**BRUSSELS SPROUTS:** 25 lb ctns MX 17.00-18.00 -**CABBAGE:** MARKET ABOUT STEADY 1 1/4 bucrts & 50 lb ctns FL Round Green Type med 8.00-9.00 few 7.50 Red Type med 14.00 NY Red Type med few 8.00-9.00 50 lb sks CD Round Green Type lge 6.00 NY Round Green Type lge 6.00 1 1/4 bucrts & 40 lb ctns FL Savoy Type med 14.00 -**CARROTS:** MARKET ABOUT STEADY sks 48 1-lb filmbags CA Topped med-lge 13.00-14.00 sks 10 5-lb filmbags AZ Topped med-lge 10.00 CD Topped med-lge 7.00 50 lb sks lse CA Topped jbo 12.00 CD Topped jbo 8.00-9.00 mostly 9.00 ctns bchd CA Bunched 24s 11.00 ctns 24 1-lb filmbags CA Baby Peeled 17.00 ctns 20 1-lb filmbags CA

Baby Peeled 13.00-14.00 ctns 12 2-lb filmbags CA Baby Peeled 17.00 -**CAULIFLOWER:** MARKET SLIGHTLY HIGHER ctns flmwrpd AZ 12s 12.00 9s 11.00 CA 12s 11.00-12.00 few 13.00 -**CELERY:** MARKET HIGHER ctns CA 2 dz 14.00 2 1/2 dz 14.00-16.00 mostly 14.00-15.00 3 dz previous commitments 11.00 flmbs 30s 16.00-17.00 flmbs 36s 17.00 FL 2 dz 13.00-14.00 2 1/2 dz 13.00-14.00 MX 3 dz 11.00 -**CHINESE CABBAGE:** 30 lb ctns CA Nappa 18.00 50 lb ctns CA Nappa 20.00 -**CORN-SWEET:** OFFERINGS INSUFFICIENT TO QUOTE -**CUCUMBERS:** MARKET ABOUT STEADY WAXED 1 1/9 buctns/crts MX med 24.00-28.00 fr qual 18.00-20.00 ord qual fair cond 10.00-12.00 -**EGGPLANT:** MARKET ABOUT STEADY ctns/crts MX 18s 11.00-14.00 mostly 12.00 fair qual 9.00-10.00 24s 11.00-12.00 fair qual 9.00-10.00 -**ENDIVE:** MARKET STEADY 1 1/9 buctns/crts FL 9.00-10.00 10 lb ctns BL Witloof 12.00 -**ESCAROLE:** MARKET ABOUT STEADY 1 1/9 buctns/crts FL 10.00-12.00 -**GARLIC:** MARKET STEADY 30 lb ctns AG White col 26.00 exjbo 22.50 CL Purple super col 28.00 col 26.00 super jbo 24.00 10 kg cntrs AG White 5 14.00 6 15.00-16.00 7 17.00-18.00 mostly 18.00 8 19.00-20.00 -**GREENS:** MARKET ABOUT STEADY ctns bchd CA Kale 24s 11.00 MX Swiss Chard 12s 16.00 Red 12s 16.00 ctns/crts bchd GA Collard 24s 10.00 Kale 24s 10.00 NC Collard 7.00-10.00 Kale 8.00-10.00 Mustard 10.00 Turnip Tops 10.00 Rape 10.00 ctns lse CA Kale Flowering 24s 13.00 MX Kale Flowering 24s 12.00 20 lb ctns MX Broccoli Rabe 24s 14.00-16.00 -**LETTUCE-ICEBERG:**

MARKET HIGHER ctns AZ 24s 18.00-20.00 mostly 20.00 Wrapped 24s 20.00-22.00 mostly 21.00-22.00 previous commitments 15.00 30s 20.00 MX 24s 17.00 -**LETTUCE-OTHER:** MARKET LEAF SLIGHTLY HIGHER, OTHERS ABOUT STEADY ctns AZ Green Leaf 24s 9.00-11.00 mostly 10.00-10.50 Red Leaf 24s 10.00-11.00 few 9.00 CA Boston 24s 11.00-12.00 Green Leaf 24s 10.00-11.00 Red Leaf 24s 11.00 3 lb ctns CA Mesc: lin Mix 6.00-7.00 -**LETTUCE-ROMAINE:** MARKET HIGHER ctns AZ 24s 13.00-15.00 CA 24s 13.00-15.00 few 12.00 ctns 12 3-count pkgs AZ Hearts 11.00-14.50 1.3 bucrts AZ 24s fair cond 15.50 -**MUSHROOMS:** MARKET STEADY 10 lb ctns PA lge 15.00 few 14.50 med 11.75 few 11.50 4 qt bkts PA med-lge 6.50 sml-med 6.00 5 lb ctns PA Oyster 18.00-20.00 Portobellas 9.00 sml 8.00 3 lb ctns PA Shiitake 14.00 fair qual 11.00 Oyster few 12.00 ctns 12 8-oz trays flmwrpd PA 10.25 ctns 10 10-oz trays flmwrpd PA 10.25 few 10.50 -**OKRA:** OFFERINGS INSUFFICIENT TO QUOTE -**ONIONS GREEN:** MARKET LEEKS LOWER, OTHERS HIGHER ctns bchd MX 48s 12.00-14.00 mostly 14.00 preferred labels high as 16.00 few including previous commitments low as 11.00 Leeks 12s 15.00-16.00 few 18.00 TX Leeks 12s 16.00 -**PARSLEY:** MARKET ABOUT STEADY ctns bchd MX Curly 60s 12.00 Plain 60s 12.00 TX Curly 60s 13.00-14.00 mostly 13.00 Plain 60s 13.00-14.00 mostly 13.00 1 1/9 buctns/crts bchd FL Curly 60s 12.00 Plain 60s 12.00 -**PARSNIPS:** OFFERINGS INSUFFICIENT TO QUOTE -**PEAS GREEN:** MARKET SUGAR

**SNAPS HIGHER, SNOW PEAS ABOUT STEADY** 10 lb ctns GU Snow Peas Decalaxed 9.00-10.00 mostly 10.00 few 11.00 Sugar Snap Peas Decalaxed 9.00-11.00 —**PEAS OTHER:** OFFERINGS INSUFFICIENT TO QUOTE -**PEPPERS:** MARKET ABOUT STEADY 1 1/9 buctns/crts FL Bell Type Green exlge 22.00-24.00 fair qual 20.00-22.00 lge 22.00-23.00 fair qual 20.00 med 20.00 Mxd Red And Green med-lge 18.00 MX Bell Type Green lge 20.00 15 lb ctns MX Bell Type Red exlge 25.00 lge 22.00-24.00 25 lb ctns MX Bell Type Red exlge fair qual 32.00-35.00 5 kg ctns IS Bell Type Orange 90-110mm 22.00-23.00 Red 90-110mm 20.00-21.00 mostly 20.00 Yellow 90-110mm 22.00-23.00 -**PEPPERS OTHER:** TOO FEW SALES TO QUOTE -**RADISHES:** MARKET SLIGHTLY HIGHER ctns tpd 30 6-oz filmbags FL Red 5.00 few 5.50 ctns tpd 14 1-lb filmbags FL Red 5.50-6.00 40 lb filmbags tpd FL Red 13.00-14.00 ctns bchd MX Red 24s 7.50-8.00 -**RHUBARB:** OFFERINGS NONE -**RUTABAGAS:** 50 lb sks CD med 8.00-9.00 -**SPINACH:** MARKET ABOUT STEADY ctns bchd CA Flat 24s 10.00-11.00 1 2/5 bucrts bchd CA Flat 24s 12.00 ctns 4 2-1/2-lb filmbags CA Flat 14.50 -**SQUASH:** MARKET ZUCCHINI ABOUT STEADY, YELLOW STRAIGHTNECK LOWER 1/2 buctns/crts FL Zucchini sml-med 7.00 some 8.00 med 4.00 Yellow Straightneck sml-med 8.00 med 6.00 ctns/lugs MX Zucchini sml-med 8.00-10.00 mostly 8.00-9.00 ord cond 3.00 med 6.00-7.00 mostly 7.00 few 5.00 fair cond 3.00

Yellow Straightneck sml-med 12.00 one label 18.00 ord cond 5.00 med 10.00 -**SWEET POTATOES:** MARKET ABOUT STEADY CURED 40 lb ctns LA U.S. One Beauregard med 15.00 NC U.S. One Beauregard med 12.00 -**TOMATOES:** MARKET MATURE GREENS SLIGHTLY HIGHER, OTHERS ABOUT STEADY 25 lb ctns FL Vine Ripes light red 5x6s 10.00 red 5x6s fair appear 6.00-7.00 85% U.S. One or Better Mature Greens light red-red 5x6s 8.00-9.00 mostly 8.50-9.00 6x6s 8.00-9.00 mostly 8.50-9.00 Local Repack Mature Greens light red 5x6s 13.00 6x6s 15.00 6x7s 15.00 flts 1 lyr AZ Vine Ripes Greenhouse light red-red 35s 18.00 flts 2 lyr MX Vine Ripes light red 4x4s one label 11.00-12.00 4x5s one label 10.00-11.00 5x5s 7.00 one label 9.00-10.00 5x6s 6.50 5 kg ctns on the vine AZ Vine Ripes Greenhouse light red-red med 14.00 IS Vine Ripes Greenhouse light red-red med 18.00 SP Vine Ripes Greenhouse light red-red med 15.00-18.00 -**TOMATOES, CHERRY:** MARKET ABOUT STEADY flts 12 1-pt bkts FL light red-red 11.00-12.00 flts 12 1-pt cntrs with lids FL Grape Type light red-red 12.00 -**TOMATOES, PLUM TYPE:** MARKET ABOUT STEADY 25 lb ctns FL red 12.00 MX light red-red 11.00-12.00 red 9.00-10.00 -**TURNIPS:** 25 lb filmbags GA Purple Top med 8.00 NC Purple Top med 8.00 -**VEGETABLES OTHER:** 8 lb ctns CA Radicchio 9s 8.00

**Randall G. Renninger**

Certified Public Accountant

Specializing in agriculture and construction industries

"We help business people discover ways to cut costs, save taxes, and be more profitable"

Call about our FREE seminars

535 W. Orange Street, Lancaster, PA 17603

(717) 299-6480 ♦ Fax (717)299-6390

**CONSIGNMENT AUCTION**

**Friday, February 23rd**

**9:30 A.M.**

**610-683-7161**

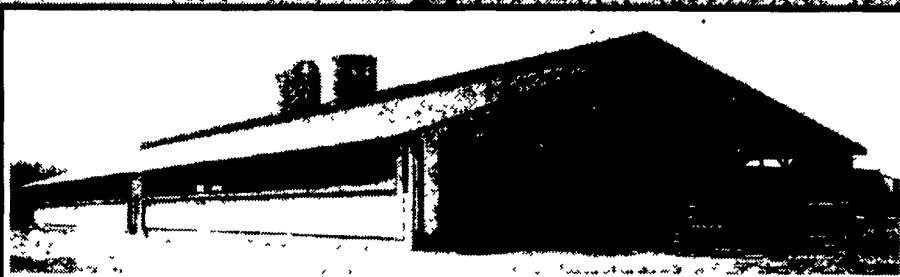
**KUTZTOWN PRODUCE AUCTION**

AH000073-L

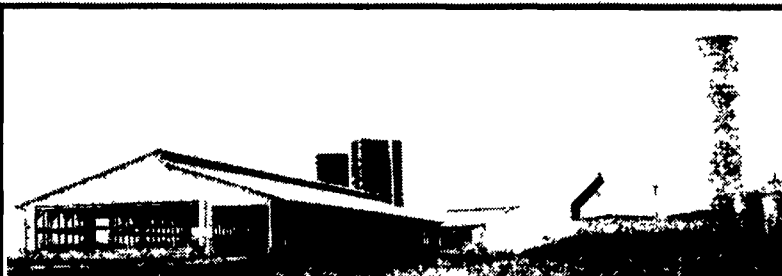


477 East Farmersville Rd.  
New Holland, PA 17557

**(717) 355-2361**



**Concrete Slatted Free Stall Barn**



**Slatted Beef Barn**



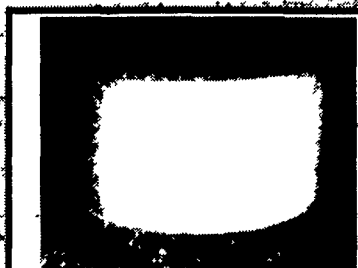
**Slatted Heifer Barn**



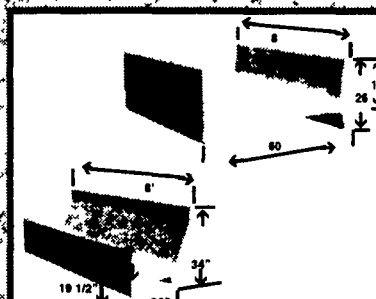
**Precast T-Wall Concrete Bunker Silos or commodity buildings built to suit your needs. Bunkers available in 8 Ft. or 12 Ft. High.**



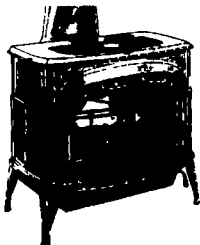
**Slatted Free Stall Barn**



**Round Concrete Watering Troughs, SCS Approved**



**Concrete Feed Banks**



VERMONT CASTINGS

**Mid-Winter Sale**

**Wood & Gas Stoves**

**thru Feb. 28**

1060 Division Highway 322 East, Ephrata, PA 17522

1 Block East of Rt. 222

**(717) 733-4973**

**800-642-0310**

www.bowmansstove.com  
Mon., Tues., Wed. 10 to 6; Thurs., Fri. 10 to 8, Sat. 10 to 4