

North Atlantic Eggs

Atlanta, Georgia
Report Supplied by USDA
February 8, 2001

Prices in New England and Boston were 2 cents lower on extra large and large, balanced were unchanged. The market tone was unsettled on brown eggs and usually steady on white eggs. Supplies were increasing and reported as adequate to fully adequate for trade needs. Retail demand was mixed but mostly moderate. Breaking stock offerings were adequate to fully adequate for a slightly improved demand. Light type hens were adequate for the slow and unaggressive demand.

PHILADELPHIA: PRICES TO RETAILERS, SALES TO VOLUME BUYERS, USDA GRADE A AND GRADE A, WHITE EGGS IN CARTONS, DELIVERED STORE DOOR, CENTS PER DOZEN. RANGE: EXTRA LARGE .71-.73, LARGE .69-.71, MEDIUM .63-.66

BOSTON: PRICES TO RETAILERS, SALES TO VOLUME BUYERS, USDA GRADE A AND GRADE A, BROWN EGGS IN CARTONS, DELIVERED STORE DOOR, CENTS PER DOZEN.

RANGE: EXTRA LARGE 1.16-1.18, LARGE 1.06-1.08, MEDIUM .81-.83

NEW ENGLAND: PRICES PAID TO PRODUCERS, CASES EXCHANGED, GRADE YIELD BASIS, BROWN EGGS LOOSE, AT FARM, CENTS PER DOZEN. RANGE: JUMBO 1.32-1.35, EXTRA LARGE .95-.98, LARGE .85-.88, MEDIUM .62-.65, SMALL .21-.24

Northeast Broiler Fryer Parts Part II

ATLANTA, GA.
February 7, 2001

Report Supplied By USDA

ICE PACKED BROILER/FRYER PARTS, DELIVERED TO FIRST RECEIVERS IN POOL TRUCKLOT AND TRUCKLOT QUANTITIES, CENTS PER POUND CURRENT NEGOTIATED WTD VOLUME ITEM TRADING AVG /LBS BREAST - B/S 135 136.56 514,960 TENDERLOINS 130-135 130.33 67,700 BREAST - WITH RIBS 68-69 75.52 214,520 BREAST - LINE RUN 68 71.66 208,800 LEGS 32-33 36.04 178,240 LEG QUARTERS (BULK) 20-21 20.06 587,980 DRUMSTICKS 27-28 33.18 143,370 THIGHS 29-30 34.28 65,470 B/S THIGHS 84-85

87.40 31,240 WINGS (WHOLE) 83-84 92.19 264,000 BACKS AND NECKS (STRIPPED) 10-12 11.84 46,280 LIVERS (5 POUND TUBS) 30-35 33.15 23,000 GIZZARDS (HEARTS) 40-45 43.48 25,680

INCLUDES NEW YORK CITY METROPOLITAN AREA, NORTHERN NEW JERSEY, MASSACHUSETTS, CONNECTICUT, RHODE ISLAND, AND PENNSYLVANIA (NORTHEAST OF HARRISBURG).

● TODAY'S NEGOTIATED SALES AS OF 11:30 A.M. WEIGHTED AVERAGE PRICE OF ALL GRADES AND BRANDS OF PRODUCT SHIPPED, OR TO BE SHIPPED AS OF 1:30 P.M. 07-FEB-2001. SOURCE: USDA/AMS POULTRY PROGRAMS, MARKET NEWS BRANCH FOR ADDITIONAL INFORMATION, PLEASE CALL (404) 562-5861. PREPARED: 07-FEB-01 01:24 PM E PSJ-dpp

Delmarva Broiler/Fryer

ATLANTA, GA.
February 8, 2001

Report Supplied By USDA

Movement of ready-to-cook whole birds was light to fair. Offerings of 3 pound and larger sizes were generally noted as fully adequate. Lighter weights were adequate to closely cleared. Live supplies were light to moderate; weights were mixed in a full range of light to

heavy. Processing schedules were light to moderate. Less than trucklot asking prices were unchanged at 52 to 66 cents. Trade sentiment was steady to fully steady on the smaller sizes; no better than steady on the heavier. Boneless skinless breasts and wings remained available. Other items, particularly bone-in breasts and thighs were in generally good balance.

ESTIMATED SLAUGHTER OF BROILER/FRYERS IN DELMARVA (000)

ESTIMATED ACTUAL AVG. WEIGHT ACTUAL AVG. WEIGHT 02/08 02/06 02/06 02/01 0 1/2

2,164 2,286 5.01 2,254 5.04
BROILER/FRYER CURRENT NEGOTIATED PRICES FOR IMMEDIATE DELIVERY INCLUDES MOSTLY MULTIPLE-DROP SHIPMENTS OF BRANDED AND WING TAGGED TO NEW YORK CITY FROM DELMARVA

BRANDED U.S. GRADE A RANGE 45-66 WEIGHTED AVERAGE 55.74 NO. OF BOXES 8,894
7 of 8 plants reporting.

New York Eggs

ATLANTA, GA.
February 8, 2001

Report Supplied By USDA

Prices were unchanged. Retail demand was usually moderate and not up to expectations for first of month business. Supplies were generally adequate for current needs. The undertone was steady.

PRICES TO RETAILERS, SALES TO VOLUME BUYERS, USDA GRADE A AND GRADE A, WHITE EGGS IN CARTONS, DELIVERED STORE DOOR, CENTS PER DOZEN. RANGE EXTRA LARGE 73-75 LARGE 70-73 MEDIUM 66-69

North Atlantic Shell Egg Market

Atlanta, GA
February 7, 2000

Report Supplied By USDA

In Chicago, prices were higher on extra large and large and unchanged on the remainder. In most other locations, prices were unchanged on all sizes. The

market tone was steady to firm. Demand was light to good, mostly moderate and was best where features stimulated additional movement. Supplies were irregular, but were mostly adequate for current requirements. Breaking stock supplies were tight to fully adequate for the improved demand. Light type hens were adequate for the slow and unaggressive demand.

Morrison's Cove Poultry & Rabbit

Martinsburg, Pa.

Report Supplied by Auction
Monday, Feb. 5, 2001

ROOSTERS 3.00-7.00.
BANTY ROOSTERS .25-2.50.
HEAVY HENS 2.75.
BANTY HENS 1.00-2.25.
PIGEONS 2.00-2.75.
BUNNIES 1.75-3.00.
RABBITS 5.25-8.50, SEVERAL LARGE 10.50-15.00.
AUCTION EVERY MON., 7:30 P.M.

Shippensburg Hay Auction

Shippensburg, Pa.

Report Supplied By Auction

Feb. 3 and 6, 2001
Hay—Straw—Grain

127 LOADS.
ALFALFA: 40.00-125.00.
MIXED HAY: 32.00-98.00.
TIMOTHY: 32.00-97.00.
CLOVER: 38.00-40.00.
BROMEGRASS: 42.00-70.00.
ORCHARDGRASS: 30.00-82.50.
STRAW: 42.00-110.00.
EAR CORN: 62.00-72.00.
OATS: 2.25-2.45 BU.
MULCH: 20.00-28.00.
FIREWOOD: 27.00-62.00 LOAD.

Dewart Hay

Dewart, Pa.

Report Supplied By Auction
Monday, Feb. 5, 2001

HAY: 17 LOTS, 50.00-97.50.
STRAW: 2 lots, 32.50 and 60.00.
WOOD: 6 LOTS 40.00-70.00 LOAD.
CORN: 2 LOTS, 65.00-67.50.
OATS: 1 LOT AT 2.30 BU.

Pesticide Update Meetings

Each meeting, 2 core and 2 category points
Time for both meetings is 9:00 am

Date and Locations:

February 14

Joe Beiler Farm, 592 Creek Rd., Christiana

February 22

Marvin Zook Farm, 5640 Limeville Rd., Gap

Please call us to notify us
of your attendance:

Advanced Agronomics
717-786-4075

OR

Little Britain Ag Supply, Inc.
717-529-2196

HEAVY DUTY FIBERGLASS GATES



Contact Your Nearest Dealer:

Paul B. Zimmerman, Inc.
50 Woodcorner Rd., Ephrata, PA 717-738-7350
John A. Zook
Rt 30, Gap, PA
Zook's Farm Store
Honey Brook, PA
Gideon K. King
Elam Road
Kinzer, PA
D & J Farm Store
Hess Road
Quarryville, PA

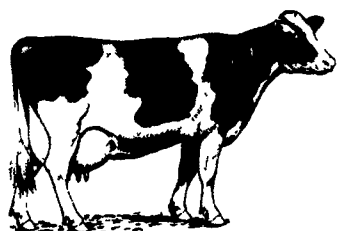
Zimmerman Farm Service
Bethel, PA 717-933-4114
Huber's Animal Health
Myerstown, PA 717-866-2246
Umbergers of Fontana
Rt 322
Annville, PA 717-867-5161
Pleasant Valley Store
Sprout Rd
Kirkwood, PA



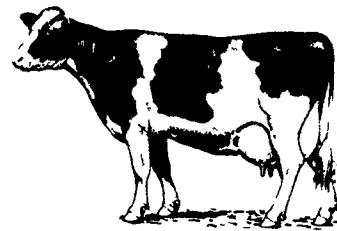
David S. King Ironworker
Manufacturer of Church Bench folding hinges.

SCOTCHMAN BEWO
CIRCULAR COLD SAW

Rovendale Ag
Watson, PA 570-538-9564
Valley Road Hardware
Christiana, PA 610-593-7285
David S. King Railroad
St Myerstown, PA 717-866-6556



PENNFIELD DAIRY DAYS



David Wolfgang, VMD
Penn State Field Veterinary
Studies Director

"Preventing Disease in the Milking Herd; Johnes and Neospora Update"

Feb. 13, 15

Tim Snyder Ph.D.
Manager Pennfield Dairy &
Livestock Nutrition

"What's New in Cow Feed in 2001"

Feb. 13, 15, 21

February 2001

Monday	Tuesday	Wednesday	Thursday	Friday
5	6	7	8	
12	13 Kauffman Center Greencastle, PA 10:20 - 2:30	14	15 ★ Sportsman Club Loganton, PA 11:00 - 2:00	16
19	20	21 Black Eyed Susan Restaurant Chestertown, MD 11:00 - 2:00	22 ★ Berrysburg Community Center Berrysburg, PA 11:00 - 2:00	23



Dan McFarland
Penn State Capital Region
Dairy Housing Extension Specialist

"Ventilation and Lighting; Stall Design and Surface; Feed and Water"

Feb. 21

Arlen Mills, DVM
Penn State Capital Region
Extension Veterinarian

"Hoof Health"; Management and Infectious Issues

Feb. 22

30 Minutes before start of meeting there will be milk, coffee & donuts!!

For Reservations Call Customer Service 1-800-995-0333



★ Transportation Available

pennfield feeds

www.dairyfeed.com