

Northeast Broiler

Fryer Parts Part I

ATLANTA, GA.

January 31, 2001

Report Supplied By USDA

Trucklot buying interest continued light and unaggressive during midweek trading. Offerings of bone-in breasts were closely balanced, but boneless skinless breasts at least adequate. Wings were adequate to fully adequate and often available at discounted levels. Dark meat parts were more than sufficient, with legs often in the longer position. Movement into retail and distributive channels was slow. The market tone was fully steady on bone-in breasts, no better than steady on boneless-skinless breasts, barely steady on wings, about steady on the balance.

ICE PACKED BROILER/FRYER PARTS, DELIVERED TO FIRST RECEIVERS IN POOL TRUCKLOT AND TRUCKLOT QUANTITIES, CENTS PER POUND. ITEM CURRENT NEGOTIATED TRADING BREAST - B/S 135-140 TENDER-LOINS 130-135 BREAST - WITH RIBS 68-69 BREAST - LINE RUN 68 LEGS 32-33 LEG QUARTERS (BULK) 20-21 DRUMSTICKS 28-29 THIGHS 29-30 B/S THIGHS 83-84 WINGS (WHOLE) 89-90 BACKS AND NECKS (STRIPPED) 10-12 LIVERS (5 POUND TUBS) 30-35 GIZZARDS (HEARTS) 40-45

INCLUDES NEW YORK CITY METROPOLITAN AREA, NORTHERN NEW JERSEY, MASSACHUSETTS, CONNECTICUT, RHODE ISLAND, AND PENNSYLVANIA (NORTHEAST OF HARRISBURG). TODAY'S NEGOTIATED SALES AS OF 11:30 A.M.

Northeast Broiler

Fryer Parts Part II

ATLANTA, GA.

January 31, 2001

Report Supplied By USDA

ICE PACKED BROILER/FRYER PARTS, DELIVERED TO FIRST

RECEIVERS IN POOL TRUCKLOT AND TRUCKLOT QUANTITIES, CENTS PER POUND CURRENT NEGOTIATED WTD VOLUME ITEM TRADING AVG /LBS BREAST - B/S 135-140 136.43 612,920 TENDER-LOINS 130-135 134.52 81,400 BREAST - WITH RIBS 68-69 74.35 256,880 BREAST - LINE RUN 68 70.29 152,000 LEGS 32-33 35.84 174,760 LEG QUARTERS (BULK) 20-21 20.33 509,780 DRUMSTICKS 28-29 32.14 166,480 THIGHS 29-30 34.52 122,200 B/S THIGHS 83-84 86.82 51,600 WINGS (WHOLE) 89-90 96.61 300,160 BACKS AND NECKS (STRIPPED) 10-12 11.97 81,680 LIVERS (5 POUND TUBS) 30-35 33.28 38,240 GIZZARDS (HEARTS) 40-45 44.95 104,360

INCLUDES NEW YORK CITY METROPOLITAN AREA, NORTHERN NEW JERSEY, MASSACHUSETTS, CONNECTICUT, RHODE ISLAND, AND PENNSYLVANIA (NORTHEAST OF HARRISBURG).

North Atlantic Eggs

Atlanta, Georgia

Report Supplied by USDA

February 1, 2001

Prices continued unchanged in all locations. The market tone was steady. Demand into all outlets ranged light to moderate, best into planned feature activity. Supplies were generally adequate for trade requirements. In the Philadelphia area, large eggs were advertised at 69 cents per dozen. Breaking stock offerings were adequate to fully adequate for the fair demand. Light type fowl were sufficient.

PHILADELPHIA: PRICES TO RETAILERS, SALES TO VOLUME BUYERS, USDA GRADE A AND GRADE A, WHITE EGGS IN CARTONS, DELIVERED STORE DOOR, CENTS PER DOZEN. RANGE: EXTRA LARGE .71-.73, LARGE .69-.71, MEDIUM .63-.66.

BOSTON: PRICES TO RETAILERS, SALES TO VOLUME BUYERS, USDA GRADE A AND GRADE A, BROWN EGGS IN CARTONS, DELIVERED

STORE DOOR, CENTS PER DOZEN. RANGE: EXTRA LARGE 1.21-1.23, LARGE 1.11-1.13, MEDIUM 81-83

NEW ENGLAND: PRICES PAID TO PRODUCERS, CASES EXCHANGED, GRADE YIELD BASIS, BROWN EGGS LOOSE, AT FARM, CENTS PER DOZEN. RANGE: JUMBO 1.32-1.35, EXTRA LARGE 1.02-1.05, LARGE .92-.95, MEDIUM .62-.65, SMALL .21-.24

New York Eggs

ATLANTA, GA.

January 31, 2001

Report Supplied By USDA

Prices continued unchanged on all sizes. The market tone was steady. Demand into all channels ranged light to moderate, best where items were featured. Large eggs were advertised at 79 cents per dozen, with a limit of four. Supplies were adequate to instances close for trade requirements.

PRICES TO RETAILERS, SALES TO VOLUME BUYERS, USDA GRADE A AND GRADE A, WHITE EGGS IN CARTONS, DELIVERED STORE DOOR, CENTS PER DOZEN. RANGE EXTRA LARGE 73-75 LARGE 70-73 MEDIUM 66-69

Belleville Poultry

Belleville, Pa.

Report Supplied by Auction

Wednesday, Jan. 31, 2001

GEESE: 3.00 EA.
TURKEYS: NONE.
GUINEAS: 4.00 EA.
ROOSTERS: 4.00-5.50 EA.
BANTAMS: 1.00-3.00 EA.
HEAVY HENS 1.50-4.50 EA.
SILKIES 2.75 EA.
MUSCOVY HENS: 3.25 EA.
MUSCOVY DRAKES: 5.75 EA.
MIXED DUCKS: 3.25-4.00 EA.
BARN PIGEONS: 2.00-2.20 EA.
WHITE BIRDS: 2.00 EA.
FANCY BIRDS: NONE.
PEACOCKS: 25.00 EA.
PHEASANTS: NONE.
DOVES: NONE.
QUAIL: 1.50 EA.
GUINEA PIGS: 1.25 EA.

RABBITS: UNDER 4 LBS. 1.25-3.00 EA., 4-6 LBS. 4.50-7.00 EA., OVER 6 LBS. 7.00-13.50 EA.

FOR MORE INFORMATION PHONE 717-242-2898.

Morrison's Cove Poultry & Rabbit

Martinsburg, Pa.

Report Supplied by Auction

Monday, Jan. 29, 2001

ROOSTERS 3.50-6.25.
BANTY ROOSTERS 2.00-4.00.
HEAVY HENS 1.00-1.25.
BANTY HENS 2.00.
PIGEONS 2.10-2.75.
GUINEAS 4.00.
DUCKS 4.75.
MUSCOVY HENS 3.00.
MUSCOVY DRAKES 4.00-5.25.
GEESE 3.00.
BUNNIES .25-1.75.
RABBITS 3.00-9.75.
AUCTION EVERY MON., 7:30 P.M.

North Atlantic Shell Egg Market

Atlanta, GA

January 31, 2000

Report Supplied By USDA

Prices were unchanged on all sizes in all areas. The market tone was steady. Demand was light to good, mostly moderate and was best where features were a factor. Supplies were adequate to instances close for current requirements. Breaking stock offerings were usually adequate to available for the light to moderate demand. Light type hens satisfied slaughter schedules.

Vintage Hay

Vintage, Pa.

Report Supplied by Auction

Thursday, Jan. 25, 2001

Hay—Straw—Grain

ALFALFA: 35.00-95.00.
MIXED HAY: 60.00-126.00.
GRASS: 47.00-95.00.
STRAW: 50.00-107.00.
CORN FODDER: 50.00.
FIREWOOD: 40.00.

Finger Lakes Hay Auction

Dundee, New York

Report Supplied by Auction

Jan. 22, 2001

MIXED HAY: 1ST CUTTING 30.00-35.00.
GRASS: 1ST CUTTING 37.50-70.00.
ALFALFA MIX. 1ST CUTTING 35.00-77.50.
TIMOTHY: 1ST CUTTING 50.00.
ALFALFA: 2ND CUTTING 60.00.
ALFALFA TIMOTHY: 2ND CUTTING 75.00-95.00.
WHEAT STRAW: 75.50-97.50.
NOW HOLDING HAY AUCTIONS AT OUR NEW LOCATION: 3691 ST. RT. 14A, PENN YAN. AUCTIONS ARE EVERY TUES. AND FRI. STARTING AT 11 A.M. SHARP. WE ALSO HOLD SAT. HAY AUCTIONS AT MARTIN'S EQUIPMENT IN BENTON CENTER BEGINNING AT 11 A.M. SHARP.

Dewart Hay

Dewart, Pa.

Report Supplied By Auction

Monday, Jan. 29, 2001

HAY: 38 LOTS, 40.00-110.00
STRAW. 11 LOTS, 50.00-80.00
WOOD: 8 LOTS, 40.00-67.50.
CORN: 8 LOTS, 60.00-72.50.
OATS 3 LOTS, 1.60-1.90 BU

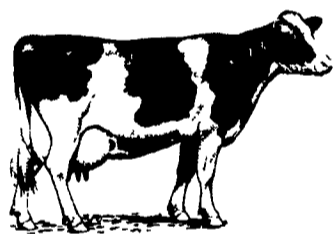
Kirkwood Hay

Kirkwood, Pa.

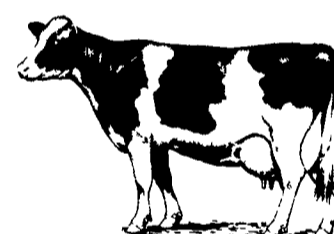
Report Supplied By Auction

Tuesday, January 30, 2001

33 LOTS.
MIXED HAY: 1ST CUTTING 60.00-87.00, 2ND CUTTING 48.00-125.00.
TIMOTHY: 70.00-125.00.
ALFALFA: 2ND 57.00-102.00, 4TH 115.00-170.00.
GRASS: 50.00-150.00.
WHEAT STRAW: 130.00.
FIREWOOD: 50.00.
SALE DAY TUES. 10 A.M



PENNFIELD DAIRY DAYS



Randy Shaver, Ph.D.
Professor of Dairy Science,
University of Wisconsin

"New Methods for Evaluating Corn Silage; Feeding the Transition Cow"

Feb. 5, 6, 7

Tim Snyder Ph.D.
Manager Pennfield Dairy &
Livestock Nutrition

"What's New in Cow Feed in 2001"

Feb. 5, 6, 7, 13, 15, 21

February 2001



Monday	Tuesday	Wednesday	Thursday	
5 Morrison's Cove Mem. Park Martinsburg, PA 10:20 - 2:30	6 ★ Plain-N-Fancy Restaurant Intercourse, PA 10:20 - 2:30	7 ★ Lebanon Expo Center Lebanon, PA 10:20 - 2:30	8	
12	13 ★ Kauffman Center Greencastle, PA 10:20 - 2:30	14	15 ★ Sportsman Club Loganton, PA 11:00 - 2:00	9
19	20	21 ★ Black Eyed Susan Restaurant Chestertown, MD 11:00 - 2:00	22 ★ Berrysburg Community Center Berrysburg, PA 11:00 - 2:00	23

Arlen Mills, DVM

Penn State Capital Region Extension Veterinarian

"Hoof Health";

Management and Infectious Issues

Feb. 22

David Wolfgang, VMD
Penn State Field Veterinary
Studies Director

"Preventing Disease in the Milking Herd; Johnes and Neospora Update"

Feb. 13, 15

Dan McFarland

Penn State Capital Region
Dairy Housing Extension Specialist

"Ventilation and Lighting; Stall Design and Surface; Feed and Water"

Feb. 21

30 Minutes before start of meeting there will be milk, coffee & donuts!!

For Reservations Call Customer Service 1-800-995-0333



★ Transportation Available

pennfield feeds

www.dairyfeed.com