

TC Series Trailers

Special production 3,000 lb. GVW, 10' or 12' trailers

- 77" between fenders, 96" overall width
- 77"x48" mesh tailgate ramp, powder coated
- 2" ball coupler
- Deck 2" treated yellow pine

Options: Stake racks for front and full side length.

ZIMMERMAN
MANUFACTURING LLC
125 KING COURT New Holland, PA 17557
717-354-9611

Contact Us For
Literature Or
The Dealer
Nearest You!



**1997 Hopper, Good Condition
\$19,200**

1-888-379-0175

79 GMC Brigadere Tandem Axle Tractor 6V92 9spd, Low Miles. Shed Kept. Exc.; 22' Steel Flatbed Body, Nice off 10-Whl Int'l 570-752-2837

GMC 14' box truck, 1974, \$2,000. 653 Det dsl eng \$750. 215-348-5514.

89 Int'l 2600/S 300 Cummins 10spd 20,000/Lb FA, 46,000/Lb RA, Long Wheel Base 717-359-9355

'85 Volvo 3406B, 400 hp, lake, 13 spd, Newway air ride, ten alum wheels, for parts or farm use, \$5,000 OBO. 717-933-9219.

'86 F150 4x4, Super cab, nice cond, make offer. 610-857-2793

1988 White GMC, Intergal sleeper, 400 Cummins, 15 spd., \$7,000 OBO 717-354-4160.

1980 33' Fruehauf Dump Trailer Roll-Over Tarp, PA Insp. \$8,750. 610-286-6981

95 Mack Tri-Axel w/New 17' Alum Dump. \$58,000/obo. Will Trade. Curry Supply Curryville 814-793-2829

95 Int'l Single Axle Dump Truck 35K GVW 350HP \$21,500 Curry Supply Curryville 814-793-2829

Bank Repos! Taking Bids on Kenworth's '93-'96, Freightliners 92-98 & Peterbilt's 95-96. Will be sold. Contact Curry Supply, Curryville 814-793-2829

'98 Dodge Cummins SLT 3500, 5 speed, ext cab, 4x4, new tires, set to tow trailer, 2-trl '99, 30', '95 45', \$29,500 obo. 717-354-0495 Will split

1978 Ford 8000 T/A Dump 671 Detroit 135pd 14' Bed Tandem Lock Fair Cond., \$7,500/OBO 540-459-5975

1985 Diamond Rio tri-axle dump truck, 315 hp, dsl, 8LL trans, 46 Rockwell rears, 17.5 steel dump, 11225 rear tires, 385.225 fronts, \$14,500. 717-957-3261/834-5674.

'85 Chevy Kodiak new 3208 Cat, 33,000 GVW, 18' reefer, real nice shape, will separate, \$6800. 717-764-2656

1987 Volvo White tractor, single axle or with tag axle, conventional, 320 Detroit, fresh OH, good cond. \$4800. 717-776-7725

471 Detroit engine, runs good, \$1500. 454 Chevy engine, runs good & other engines. 1-800-839-3338

1989 Peterbilt 60 series, Detroit, 6" double bunk, 9 speed Fuller trans, air ride, cruise, AC, good rubber, good cond. \$12,500 obo 717-624-4342

'84 Freightliner conv, 42' sit-in sleeper, Big Cam III, 400 Cummins, out of frame reman 1/00, 13 spd over, 370 rears, \$6000. 717-369-4154

Eby aluminum horse trailer, 1997, 22'x7'6"x7'6", draft size, movable partitions for carriage & team, \$12,500. 610-932-7365.

'93 Freightliner FLD120 dbl bunk, 387,000 mi, \$22,000 obo. '75 Tralco, alum dump trailer, \$6500 obo. (2)Used power plants, Cummins 4 cyl turbo & 6 cyl skid mounted. 973-875-4900

18' tag-along trailer, 7,000 lb GVW, custom 1997 Torflex axles, \$1,800. 717-438-3074.

'72 Trailmobile flatbed, 42', inspected 11/9/01, steel frame, tires excel, newly painted, looks pretty, includes binders, chain & locks, \$3000. 717-652-2085

1971 Hahn Firetruck, 91 refurb, Pierce body, \$2,000. 717-862-1919.

1988 Chevy 1 ton, 12' steel flatbed, runs good, \$3000. 301/824-6082 after 5pm.

30' Gooseneck flatbed trailer w/dual tandem wheels, very good condition, \$3500. Walter Winkler, 302-398-8754.



**'91 Ace Rolloff Trailer,
50', Ready To Go To Work
\$14,900**

1-800-839-3338



91 Freightliner FLD120 400 Cummins 25K on overhaul, 22' aluminum grain dump, new clutch, batteries and brake drums, radiator redone. \$25,000
94 Freightliner FLD112, 3176 Cat 350 HP w/Jake Brake, 10 speed, ac, cruise, good rubber, new 19' aluminum dump and hoist. Excellent condition. \$37,000
3 Axle Pintle Hitch Trailer, ramps, new bed and lights.
Juniata County, PA
(717) 694-3030 or (717) 589-7481



85 Mack Superliner
V8, 9 Speed Rebuilt, Alum. Wheels, Good Rubber
\$14,000



Case 580C Loader
Runs Good
\$4,500



93 Chevy HD 3500
11 Ft. Dump Tool Box, Fuel Tank - New Engine
\$12,000

**No Calls After 9:00 P.M.
410-557-9559**

Specializing in Quality Built Trailers and Used Trucks



HUFFMAN TRAILER SALES
FRIENDLY, PROFESSIONAL SERVICE

Peanut hulls available by self-unloading trailers

Division of Huffman Litter Service



Rt. 11 NORTH, NEAR EXIT 251 • HARRISONBURG, VA 22802

OFFICE: 540-434-3530 OR 800-825-2545



Featherlite - Hudson - Titan - Pace American - Apache Cattle Feeders

KELLER BROS.

(Buffalo Springs) Lebanon, PA

717-949-2000 or 1-800-363-2767

LEBANON COUNTY'S HEAVY DUTY TRUCK HQTRS.

Over 100 Clean Pre-Owned Vehicles In Stock At All Times!!

FORD FORD

1998 FORD EXPLORER SPORT
4x4, V6, AT, A/C, One Owner, Low Miles



1991 JEEP GRAND WAGONEER
V8, AT, A/C, PW, PL, 4x4 SPECIAL \$3,795



1998 FORD RANGER SUPER CAB
XLT, 4x4, V6, 5 Spd., Alloy Wheels, Tarp, One Owner



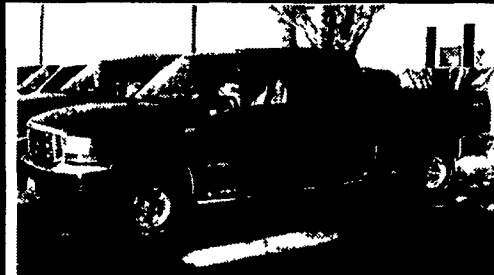
1991 INT. 4700
24 Ft. Box, Diesel, AT, A/C, 1 Owner, Local Trade



1998 FORD F150 SUPER CAB
V8, AT, A/C, Long Box, 1 Owner



2000 TOYOTA RAV 4
4x4, 5-Spd., A/C, Alloy Wheels, AM/FM/Cass., 1-Owner, Low Miles



2000 & 2001 NEW FORD SUPER DUTY 7.3 POWER STROKE DIESELS
Over 10 In Stock, Crew Cabs & Super Cabs, 4WD & 2WD SAVE UP TO \$5,000

1995 FORD F250
Reg. Cab 4x4, XLT, V8, AT, A/C, PW, PL



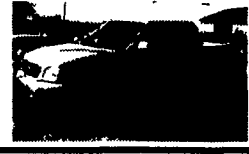
2000 FORD F650 SUPERCAB
Cab & Chassis, Cat Diesel, 6-Spd., A/C, Air Brakes - List \$47,194 Sale \$37,900



1999 FORD EXPEDITION XLT
V8, AT, A/C, PW, PL, 3rd Seat, One Owner, Only 15,000 Miles



2001 FORD F150 SUPER CREW XLT 4x4
One Owner, Low Miles SAVE \$\$



1994 FORD F150 SUPER CAB
Flare Side, 4x4, XLT, AT, A/C, Leather Captain Chairs



1995 FORD F350 4x2 DIESEL
5-Speed, A/C, C/T



1996 FORD F250 SUPERCAB 4X4
AT, XLT, 460 Gas, Loaded with All Options, Tan



1997 FORD MUSTANG GT
V8, AT, A/C, PW, PL, Alloy Wheels, SHOWROOM CONDITION



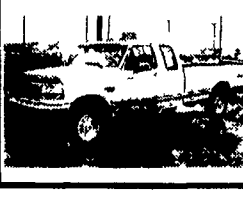
1995 CHEV K1500
Ext. Cab 4x4, 5.7 V8, AT, A/C, Silverado, Short Bed, One-Owner



1999 DODGE DURANGO SLT
4x4, V8, AT, A/C, Loaded, Leather, Low Miles.



1997 FORD F250 SUPERCAB 4x4
Diesel, AT, XLT Trim



KELLER BROS. FORD HAS SERVED CENTRAL PENNA. AREA FOR MORE THAN 78 YEARS.

FORD FORD FORD FORD FORD FORD