

35 TRUCKS AND TRAILERS

1988 Mack MS250, 33 GVW, air brakes, cab cover, 195" WB, will take 22' box, \$3000. 570-467-3763

'90 Chevy Scottsdale 1500, 4.3 V6, 5 spd, PS, PB, AM-FM, 70,000 miles, burgundy & silver, excellent condition, \$5,600. 717-733-2873

'95 GMC SL 1500 4x4, 4.3, 5 spd, PS, PB, AM-FM, 6,100 GVW, 44,000 miles, teal, \$9,950. 717-733-2873

'91 Chevy Silverado 1500 4x4 Suburban, 350, auto, PS, PB, PW, PDL, cruise, tilt, air, 8 pass., towing package, 2 tone blue, 92,000 miles, excellent condition, \$9,950. 717-733-2873

'99 Dodge 2500, 8 pass., 318 auto, PS, PB, PW, PDL, cruise, tilt, dual air, AM/FM Cass., 19,000 miles w/bal. of factory warranty, \$17,900. 717-733-2873

'99 Dodge 2500, 12 pass., 318 auto, PS, PB, PW, PDL, cruise, tilt, dual air, AM/FM Cass., forest green, 23,000 mi. w/ balance of factory warranty, \$18,500. 717-733-2873

'96 Dodge 3500 8 pass. van, 318 auto, PS, PB, air, AM-FM, 75,000 one owner miles, new radials, blue, excellent condition, \$8,975. 717-733-2873

'91 Dodge Dakota LE long bed, 4x4, 318 auto, PS, PB, air, AM-FM, new radials, 73,000 one owner miles, excellent condition, \$5,975. 717-733-2873

'96 Dodge SLT 1500 8 pass. van, short whl. base, 318 auto, PS, PB, PW, PDL, cruise, tilt, air, new radials, 84,000 one owner miles, burgundy & silver, excellent condition, \$8,975. 717-733-2873

'99 Chevy Express LS 1500 8'pass., 5.7 auto, PS, PB, PW, PDL, cruise, tilt, dual air, AM-FM Cass/CD, 33,000 miles, black, \$18,500. 717-733-2873

1993 Ford L8000 Cummins 8.3L 6spd 31K GVW, Air Brakes with or without 24' Van Body 717-597-5623

1993 Peterbuilt 377 60 Series Detroit 10spd, Air Susp. 48" Sleeper, Steel Wheels, No Jake. \$11,500. 717-597-5623

'94 Ford F450 Super Duty, dsl, 5 spd, 130,000 mi, 12' flatbed dump, good cond, \$13,500. 717-792-2751

Dump Body w/Hoist 16' Flatbed w/4' Metal Sides \$1200 410-771-0071

66 GMC 14' Flatbed Dump 54" Grain Sides 305 V-6 Gas Eng 5+2 Rear \$1500 410-771-0071

1993 20' steel flatbed w/ hoist & reservoir, \$1200. Can deliver. 814-942-3821.

5 Ton Hudson trailer, ex cond, \$2900. 22 cu.yd. roll off or hook container, \$2250 obo. 717-653-9662, 717-653-1575

'75 Ford F-700 Single Axel Farm Truck, Runs, Needs Body 302-378-7611

'87 Volvo straight truck, model FE6 eng, 5 spd trans, 22' body w/lift gate, in-dash rear camera, 28,000# GVW, \$8900. 610-921-1971

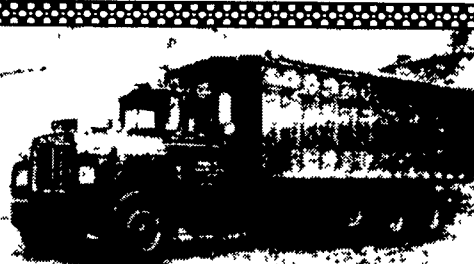
'78 IH DT466, 5+2 speed rear, tires 1100-20, 80% tread, 35,000 GVW, dbl frame, 84,000 mi, w/'85 Stoltzfus 10' hyd fert & lime spreader w/lime marker, 30' booms, both good shape, will separate. 610-869-2183

'95 IH TE44 turbo, 5 spd, 21,000 GVW, 18' Jarr-Dan, 66,000 mi, power steering, vacuum brakes, AC, cruise, PW, PL, hyd driver seat, AM/FM cassette, \$23,000. 717-656-3081

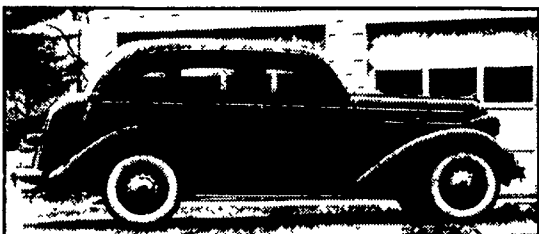
Trailer, '95, 18', GNF, 7,000 GVW, Cat 3406A eng, 13 spd trans, wetline, sghd, RR, alum tanks. 610-489-0783.



1985 Chevy Suburban, 4x4, 6.2 L Diesel, Auto., Dual A/C, 3rd Seat, Tailgate, PW, PDL, Decent Cond., Two-Tone Brown, Runs Good! \$2,495. Quik Cash Deal Double-D-Auto Sales. 717-774-5590, York County.



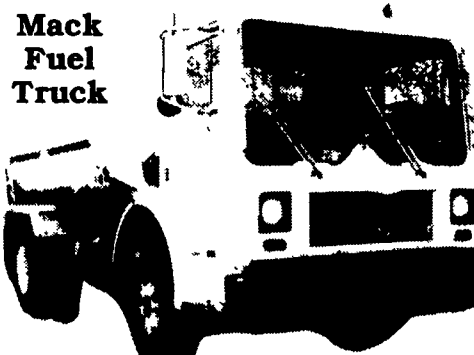
Mack Triaxle Grain Truck
22 ft. Bed, Totally Rebuilt, Hauls Over 800 Bushel, Excellent Condition, \$28,900
717-361-7846



1936 Dodge Touring Sedan,
garage kept, ex. cond.
\$10,500
(410) 399-4299
Harford Co., MD



1985 Chevy Silverado 4x4, 6.2L Diesel, Auto, PS, PB, A/C, PW, PDL, Fiberglass Topper, Overall Decent Cond., Runs Good! 107-K Miles. \$2,850
Call Double-D-Auto Sales **717-774-5590** York County



3208 Cat, Bottom Load, Ready To Work \$8,500 1-800-839-3338



'94 Ford F350 4x4 dump truck, forest green, XLT turbo diesel, 5 speed, 74K miles, 11,000 GVW, with 8.5 ft. Meyers plow. Set up for PTO driven salt spreader and leaf box. Excellent shape. \$19,500/OBO
Please call 410-984-3965

East Coast Trailers
Honesdale, PA • 570-729-8870

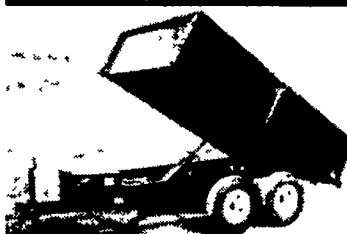


25' 20,000 lb. gooseneck.....\$5,300
23' 14,000 lb. gooseneck.....\$3,595
Other Models & Sizes in Stock



'74 BROCKWAY
290 CUMMINS
\$9,500 OBO
717/336-7434

Load Boss Trailers
Quality Built



Low profile, 6'x10', 10,000 GVW \$3,500
814-623-8696 Delivery available
Every trailer built for your needs.

Sale 1 Week Only
6x10
10,000 GVW
Battery Included
Electric Brakes-
Diamond Plate
Toolbox
Choice of color
\$3,200

KEYSTONE TARPS
SERVICE & SALES
Is A Manufacturer Of Custom Tarps

- Systems
- Load Straps
- Tarps
- Gloves
- Storage Covers
- Used Railroad Ties

1-800-798-TARP (8277)
FAX 570-435-0036 570-435-0752

USED TRAILERS

JIM MARINO, JR.
USED TRAILER MANAGER
717-492-1806

Great Dane Trailers
1831 AUCTION ROAD
MANHEIM, PA 17545
www.lancaster@greatdanetrailers.com

87 MACK RW613
350 4V 15 Spd., 199" WB Double Frame,
Neway Air Ride **\$10,000.00**
717-235-6858
Call Between 7 AM and 5 PM

WM. COHEN & SONS, INC.
"THE TRUCK PARTS STORE"
HEAVY DUTY TRUCK PARTS - NEW & USED - REBUILT REARS & TRANSMISSIONS
(610) 269-1298 Fax (610) 269-0787 www.cohentruckparts.com

11.1 60 series Detroit engines
12.7 60 series Detroit engines
8.2 non-turbo Detroit engines

1985 Mack Superliner
V8 Mack 4 Valve Engine, 7 Spd Trans,
Mack Rears on Camelback Suspension,
11x24 5 Tires On Aluminum Budds

Ingersoll Rand Air Compressor,
Type 30, 15 HP 3 Phase

Forklifts For Sale
Hyster 2,000 lb capacity, 3 wheeler, propane gas, solid tires, 92" fork height, 48" forks
Towmotor 4,000 lb capacity, 2 stage mast, 108" fork height, 42" forks, solid tires
Towmotor 2,000 lb capacity, 106" fork height, 42" forks, solid tires

200 Gal. & 550 Gal.
Plastic Tanks For Sale

Michigan Loader Model L30
Quick Coupler, Comes With
1 Yard Bucket and 60" Forks,
Runs Excellent

12' Reefer Body,
under body refrigeration unit,
Uses 220 electric Has damage

91 Isuzu NPR, 4 cyl. turbo-
diesel, auto, 14' reefer body,
110 electric, 195,969 mi

4 I-Beams,
49' Long, 28" High w/12-1/2" Web

Aluminum Tanker/Trailers
7500 gal. and up

94 IH Model 4900
DT466 engine, 5 spd., single rear,
air brakes, A/C, 32,900 GVW,
double frame, 11x22.5 Budds,
254" W.B.

New Flatbeds Available
Sizes currently available are
12', 14', 20', 22' and 24'
Racks are also available

(9) 40' - 45' 1970's & Newer Steel
Flatbed Trailers (also have drop
check trailers) some have sliding
tandems, all in good condition
\$2,500/Ea. and Up