

# UNLIMITED STRUCTURES INC.

800-858-7297

**POLE BUILDINGS**  
Horse Barns • Riding Arena  
Equipment Storage  
Garages  
Commercial Buildings



## \$ WHOLESALE \$

1/2" to 8" **PIPE** 1/2" to 8"

Prime, secondary, structure pipe  
Farmers, Manufacturers, Fabrication  
— Will Cut To Your Size Needs —

### STEEL TUBING

1 1/2" Sq 3 1/2" Sq 2"x2" Sq 2"x4" Rect  
2 1/2" Sq 4"x4" Sq 3"x3" Sq 3"x2" Rect  
20' to 24' Lengths 1/8" to 1/4" Thick

## BRICKER'S PIPE YARD

717-261-0095 1970 Frank Road  
Chambersburg, PA 17201

## FEBRUARY SPECIAL METAL ROOFING & SIDING

29 Gauge • 36" Coverage • Prices Per Sheet

			1-49	50+	100+	200+
1000 Pcs.	12'	Rainbow	7.80	7.40	7.00	6.00
300 Pcs.	12'	Dual Galv.	9.00	8.55	8.10	7.50
900 Pcs.	12'	Primed Galv.	9.00	8.55	8.00	7.00
325 Pcs.	12'	Antique Brown	13.80	13.00	12.45	11.00
600 Pcs.	12'	Earth Brown	13.80	13.00	12.45	11.80
500 Pcs.	12'	Charcoal	13.80	13.00	12.45	11.80
450 Pcs.	12'	Slate Blue	13.80	13.00	12.45	11.00
375 Pcs.	12'	Black	13.80	13.00	12.45	11.00
175 Pcs.	12'	Sandstone	13.80	13.00	12.45	11.80
550 Pcs.	12'	Beige	13.80	13.00	12.45	11.80
200 Pcs.	12'	Clay	13.80	13.00	12.45	11.00
250 Pcs.	12'	Tan	13.80	13.00	12.45	11.80
300 Pcs.	12'	White	14.40	13.80		
100 Pcs.	12'	Burgundy	13.80	13.00	11.00	
400 Pcs.	11'	CD Galv.	9.35	8.80	8.40	7.00
800 Pcs.	12'	CD Galv.	10.00	9.50	9.00	8.50
125 Pcs.	12'	CD S.D. Galv.	7.80	7.00	6.50	6.00
500 Pcs.	Under 6'	Mixed Colors	2.50	2.00	1.50	1.00
200 Pcs.	10'	Gold Ridge R.	4.00	3.00	2.00	1.00

Discount Prices based on 1 Length & Color

**Must Mention This Ad For Special Prices**

**Sold As Is! No Warranty! No Return!**

## A.B. MARTIN ROOFING

Metal Roofing & Building Supplies

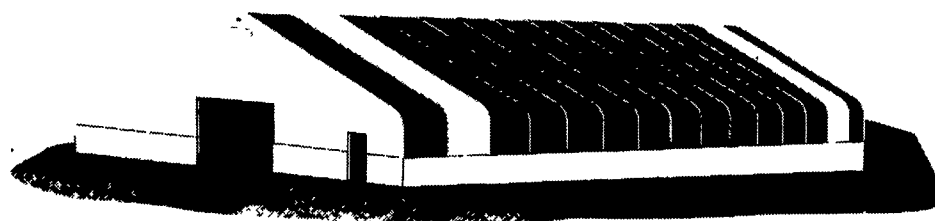
150 Slate Road, Ephrata, PA 17522

717-445-6885 1-800-373-3703

Mon.-Fri. 7 AM-5:30 PM Sat. 7-11:30 AM



**We Cover** Introduces The New *Regal Series* Buildings



- Engineered Steel Trussed arches - Hot dipped galvanized with 5 year warranty
- Excellent natural light - a real energy saver
- Custom made for your application
- Professionally manufactured!
- Superior snow slide off

- 10 oz poly cover With up to 15 year warranty
- New buy back program - call for details!
- Any width from 30' to 160'
- Portable and expandable
- Permanent or temporary
- Innovative Features

### Many Options Available

- Chain hoist doors
- End enclosures
- Covered ridge vents
- Ceiling available
- Many colors of Poly available
- Can be insulated

Can be used for cattle housing, free stall barns, milking parlours, tie stall barns, calf barns, machinery storage, hay storage, riding arenas, insulated work areas, warehousing, and so forth



**We Cover**  
BUILDING SYSTEMS

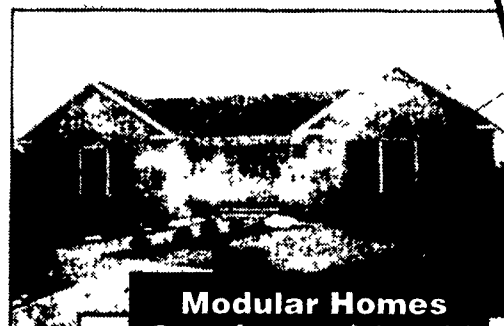
Available From: 55 Belles Hollow Road  
John Edward Weaver Danville, PA 17821  
Call Toll Free: 1-888-672-2213

# Foremost Industries

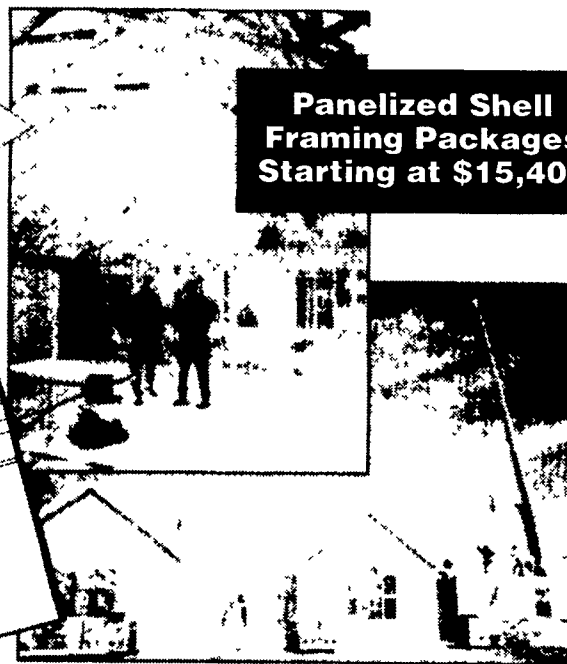
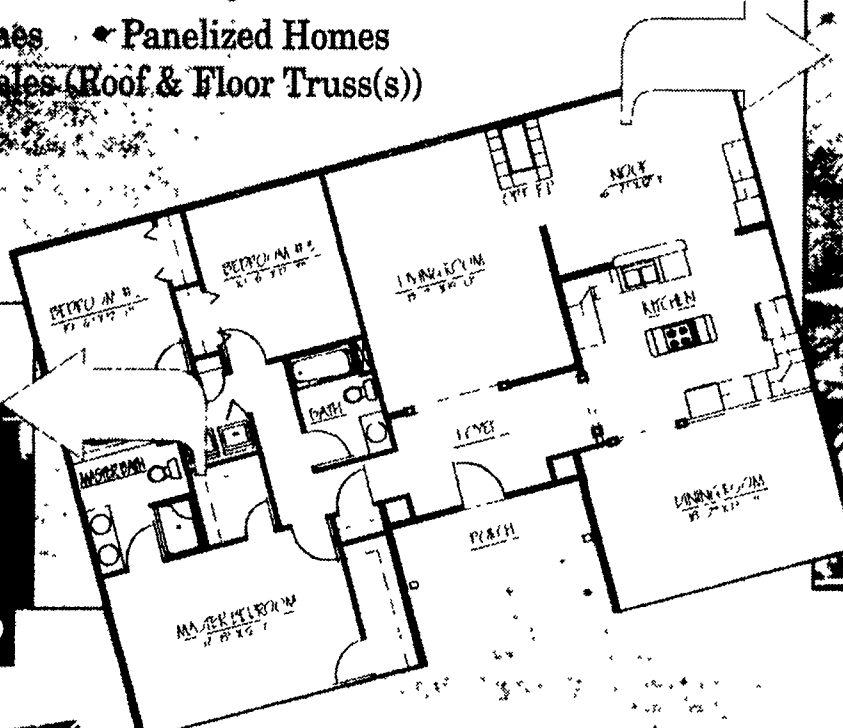
*Providing a Better Way to Build*

- Modular Homes
- Panelized Homes
- Component Sales (Roof & Floor Truss(s))

**FOREMOST  
BUILDING  
INNOVATIONS**



**Modular Homes  
Starting at \$47,500**



**Panelized Shell  
Framing Packages  
Starting at \$15,400**

**You Do Have A Choice**

Call

**1-877-BUILD-FI**

Foremost Industries, Inc.  
2375 Buchanan Trail West  
Greencastle, PA  
717-597-7166

Exit 3 off I-81. Take Rt. 16W for 2 miles.  
Foremost will be on your right.

We've built over 5000 Modular Homes, so you owe it to yourself to check us out. Visit our Model Home Village to see 7 beautifully decorated Model Homes, and pick up our "Collection of Home Plans."

**Modular Plans Built, Erected,  
& Finished the Foremost Way.**

Building has never been so easy & affordable for the Builder, Developer or Do-It-Yourselfer. Shell Framing Packages, Roof Truss(s), Engineered Wall Panels, Andersen Windows, Peachtree Doors, and Appalachian Mill Kitchen/Bath Cabinetry...

**Buy Your Building Components  
from a Manufacturer and Save**

**Foremost**

**For All Your Truss Needs**