

**Northeast Broiler Fryer Parts Part I**

ATLANTA, GA.  
January 24, 2001

Report Supplied By USDA

Trucklot buying interest was generally unaggressive during midweek trading, and most dealers were cautious and limiting floorstocks to most immediate needs. Offerings of bone-in breasts remained tight, and boneless-skinless breasts were usually balanced to no more than adequate. Dark meat parts were more than sufficient, and wings were at least adequate. Movement into retail and distributive channels was mostly light, however, attractive feature activity on breast items was funneling some additional product from the market. The market tone was fully steady to firm on bone-in breasts, fully steady to instances firm on boneless-skinless breasts, about steady on the balance.

ICE PACKED BROILER/FRYER PARTS, DELIVERED TO FIRST RECEIVERS IN POOL TRUCKLOT AND TRUCKLOT QUANTITIES, CENTS PER POUND. ITEM CURRENT NEGOTIATED TRADING BREAST - B/S 130 TENDERLOINS 130-135 BREAST - WITH RIBS 63-64 BREAST - LINE RUN 63 LEGS 33-34 LEG QUARTERS (BULK) 20-21 DRUMSTICKS 28-29 THIGHS 29-30 B/S THIGHS 79-80 WINGS (WHOLE) 90-91 BACKS AND NECKS (STRIPPED) 10-12 LIVERS (5 POUND TUBS) 30-35 GIZZARDS (HEARTS) 45-50

INCLUDES NEW YORK CITY METROPOLITAN AREA, NORTHERN NEW JERSEY, MASSACHUSETTS, CONNECTICUT, RHODE

ISLAND, AND PENNSYLVANIA (NORTHEAST OF HARRISBURG). TODAY'S NEGOTIATED SALES AS OF 11:30 A.M.

**Northeast Broiler Fryer Parts Part II**

ATLANTA, GA.  
January 24, 2001

Report Supplied By USDA

ICE PACKED BROILER/FRYER PARTS, DELIVERED TO FIRST RECEIVERS IN POOL TRUCKLOT AND TRUCKLOT QUANTITIES, CENTS PER POUND

CURRENT NEGOTIATED WTD VOLUME ITEM TRADING AVG /LBS BREAST - B/S 130 127.04 618,480 TENDERLOINS 130-135 133.16 91,000 BREAST - WITH RIBS 63-64 68.87 232,880 BREAST - LINE RUN 63 66.61 236,000 LEGS 33-34 36.38 181,400 LEG QUARTERS (BULK) 20-21 20.93 484,446 DRUMSTICKS 28-29 33.18 158,730 THIGHS 29-30 31.19 159,310 B/S THIGHS 79-80 82.57 54,360 WINGS (WHOLE) 90-91 99.72 301,810 BACKS AND NECKS (STRIPPED) 10-12 11.86 73,200 LIVERS (5 POUND TUBS) 30-35 38.50 31,880 GIZZARDS (HEARTS) 45-50 54.70 95,480

INCLUDES NEW YORK CITY METROPOLITAN AREA, NORTHERN NEW JERSEY, MASSACHUSETTS, CONNECTICUT, RHODE ISLAND, AND PENNSYLVANIA (NORTHEAST OF HARRISBURG).

TODAY'S NEGOTIATED SALES AS OF 11:30 A.M.

WEIGHTED AVERAGE PRICE OF ALL GRADES AND BRANDS OF PRODUCT SHIPPED, OR TO BE SHIPPED AS OF 1:30 P.M. 24-JAN-2001.

**North Atlantic Eggs**

Atlanta, Georgia  
Report Supplied by USDA  
January 25, 2001

In Philadelphia, prices were unchanged to 1 cent higher on mediums and unchanged on the larger sizes. In Boston, prices were unchanged to 2 cents higher on all sizes. In New England, prices were unchanged. The market tone was steady to fully steady. Demand ranged light to fairly good, best where featured. In the Philadelphia area, large eggs were advertised at 69 cents per dozen with no restrictions. Supplies were adequate to available for white eggs and short for brown eggs. Breaking stock offerings were adequate for the fair demand. Light type hens were adequate for slaughter requirements.

PHILADELPHIA: PRICES TO RETAILERS, SALES TO VOLUME BUYERS, USDA GRADE A AND GRADE A, WHITE EGGS IN CARTONS, DELIVERED STORE DOOR, CENTS PER DOZEN. RANGE: EXTRA LARGE 71-73, LARGE 69-71, MEDIUM 62-65.

BOSTON: PRICES TO RETAILERS, SALES TO VOLUME BUYERS, USDA GRADE A AND GRADE A, BROWN EGGS IN CARTONS, DELIVERED STORE DOOR, CENTS PER DOZEN. RANGE: EXTRA LARGE 116-123, LARGE 107-113, MEDIUM 79-83.

NEW ENGLAND: PRICES PAID TO PRODUCERS, CASES EXCHANGED, GRADE YIELD BASIS, BROWN EGGS LOOSE, AT FARM, CENTS PER DOZEN. RANGE: JUMBO 132-135, EXTRA LARGE 102-105, LARGE 92-95, MEDIUM 62-65, SMALL 21-24.

**New York Eggs**

ATLANTA, GA.  
January 24, 2001

Report Supplied By USDA

Prices were 1 cent higher for mediums and unchanged on the larger sizes. The market tone was steady to fully steady, with mediums in the best position. Demand ranged light to fairly good, best into feature activity. Large 18-pack eggs were advertised at 2 for \$3. Offerings were adequate to available for trade requirements.

PRICES TO RETAILERS, SALES TO VOLUME BUYERS, USDA GRADE A AND GRADE A, WHITE EGGS IN CARTONS, DELIVERED STORE DOOR, CENTS PER DOZEN. RANGE: EXTRA LARGE 73-75, LARGE 70-73, MEDIUM 64-67.

**North Atlantic Shell Egg Market**

Atlanta, GA  
January 24, 2000

Report Supplied By USDA

Prices were unchanged on all sizes in California and in the Midwest region. Elsewhere, prices were higher on mediums and unchanged on the balance. The market tone was mostly steady to fully steady with mediums in the best position. Demand continued in a full range of light to good and was best into feature activity. Supplies of white eggs were adequate to available and short for brown eggs. Breaking stock offerings were adequate for the fair demand. Light type hens were sufficient.

**Livestock Cooperative Auction Market of North Jersey Poultry & Egg**

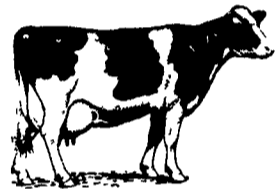
Hackettstown, N.J.  
Report Supplied by Auction  
Tuesday, Jan. 23, 2001

HEAVY FOWL .85.  
MIXED FOWL .50-90 LB.  
GEESE .20 LB.  
BANTAMS 2.00 EA.  
ROOSTERS .60-.75 LB.  
BUNNIES 2.25 EA.  
DUCKS .60-.85 LB.  
RABBITS 2.00 EA., .40-1.35 LB.  
PIGEONS 1.50-3.75 EA.  
GUINEAS 2.50-3.75 EA.  
GRADE A EGGS: WHITE JUMBO, EX. LRGE. .76, LARGE .70-.75; BROWN EGGS JUMBO, EX. LRGE. .84-.86, LARGE .79-.87, MED. .75.

**Morrison's Cove Poultry & Rabbit**

Martinsburg, Pa.  
Report Supplied by Auction  
Monday, Jan. 22, 2001

ROOSTERS 3.00-6.25.  
BANTY ROOSTERS 3.00.  
HEAVY HENS 1.75-4.25.  
PIGEONS 1.75.  
BUNNIES 1.50-4.75.  
RABBITS 6.00-9.75.  
AUCTION EVERY MON., 7:30 P.M.



**PENNFIELD DAIRY DAYS**



**January 2001**

Monday	Tuesday	Wednesday	Thursday
22			28
29			



**February 2001**

Monday	Tuesday	Wednesday	Thursday	Friday
			1	2
			8	9
12		14	15	16
19	20		21	23

**Dan McFarland**  
Penn State Capital Region  
Dairy Housing Extension Specialist  
**"Ventilation and Lighting;  
Stall Design and Surface; Feed and Water"**  
Feb. 21

**David Wolfgang, VMD**  
Penn State Field Veterinary Studies Director  
**"Preventing Disease in the Milking Herd;  
Johnes and Neospora Update"**  
Jan. 30, 31 • Feb. 1, 13, 15

**Randy Shaver, Ph.D.**  
Professor of Dairy Science, University of Wisconsin  
**"New Methods for Evaluating Corn Silage;  
Feeding the Transition Cow"**  
Feb. 5, 6, 7

**Arlen Mills, DVM**  
Penn State Capital Region Extension Veterinarian  
**"Hoof Health";  
Management and Infectious Issues**  
Feb. 22

**Tim Snyder Ph.D.**  
Manager Pennfield Dairy & Livestock Nutrition  
**"What's New in Cow Feed in 2001"**  
Jan. 30, 31 • Feb. 1, 5, 6, 7, 13, 15, 21

30 Minutes before start of meeting there will be milk, coffee & donuts!!

For Reservations Call Customer Service 1-800-995-0333



★ Transportation Available

**pennfield feeds**

www.dairyfeed.com