

BARN CLEANER REPLACEMENT CHAIN



for

- Jamesway
- Berg • Patz
- Farmway
- Clay
- Starline
- Cornell

Drive Units, Sprockets & Ramps Also Available

Sales & Service
ROVENDALE AG & BARN EQUIP.

WATSON TOWN, PA 17777

570-538-9564 OR 570-742-4226

1-800-1-180 Watson town Exit



ATTENTION DAIRY FARMERS

We Need Good Used Tanks
100 - 6,000 Gal. - Call Us

- | | | |
|---|----------------------------|-----------------------------------|
| • 150 Gal Mueller | • 600 Gal Majonnier | • 1500 Gal Girton D4 |
| • 150 Gal Zero | • 600 Gal Mueller M | • 1500 Gal Girton D5 |
| • 150 Gal Sunset | • 600 Gal Storage | • 1500 Gal Zero |
| • 180 Gal Milkkeeper | • 625 Gal Girton D5 | • 1500 Gal Mueller OH |
| • 200 Gal Majonnier Self Contained (nice) | • 625 Gal Sunset | (Late Model) |
| • 200 Gal Mueller | • 700 Gal Mueller O | • 1500 Gal Mueller OE |
| • 200 Gal DeLaval | • 700 Gal Mueller OH | • 1500 Gal Storage |
| • 250 Gal Sunset | • 700 Gal Mueller M | • 1600 Gal Surge |
| • 250 Gal Milkkeeper (self contained) | • 735 Gal Sunset | • 2000 Gal Mueller O |
| • 250 Gal Mueller | • (3) 800 Gal Girton D4 | • 2000 Gal DariKool |
| • 300 Gal Mueller | • 600 Gal Girton D5 | • 2000 Gal Mueller OH |
| • 300 Gal Sunset | • 800 Gal Surge | • 2000 Gal Storage |
| • 375 Gal DeLaval (Self Contained) | • 800 Gal DeLaval Flat Top | • 2500 Gal Mueller OH |
| • 400 Gal Milkkeeper (Self Contained) | • 800 Gal Mueller OH | • 2500 Gal Storage |
| (SOLD PA) | • 850 Gal Sunset FT TP | • 3000 Gal Mueller OH |
| • 400 Gal Mueller | • 1000 Gal DeLaval | • 3000 Gal Surge |
| • 400 Gal Sunset | • 1000 Gal Mueller OH (2) | • 3000 Gal Girton D5 |
| • 400 Gal Majonnier | • 1000 Gal Mueller M | • 3000 Gal Storage |
| • (3) 500 Gal Girton | • 1000 Gal Surge | • 4000 Gal Mueller OH |
| • 500 Gal Mueller M | • 1000 Gal Sunset | • 4000 SOLD NY |
| • 500 Gal Mueller O | • 1000 Gal Majonnier | • 4000 Gal Storage |
| • 500 Gal Majonnier | • 1000 Gal Girton D5 | • 5000 Gal Storage |
| • 500 Gal Milkkeeper | • 1250 Gal Mueller M | • 6000 Gal Mueller OH |
| • 500 Gal Sunset | • 1250 Gal Mueller OH | • 6000 Gal Milk or Storage |
| • (3) 600 Gal Girton (D4) | • 1250 Gal DeLaval | • 7000 Gal Mueller OH, Late Model |
| • 600 Gal DariKool | • 1250 Gal Surge | |
| | • 1250 Gal Girton D5 | |
| | • 1250 Gal Storage | |

HEAT EXCHANGERS

- Therma Stor 80 • Therma Stor 100
- Mueller Fre Heater 105 Gal.
- Therma Stor III, 120 Gal. • Mueller Fre heater 50 Gal.
- 300-6000 Gal. Storage Tanks

Installation, Sales And Service

RAY SHENK

505 E Woods Drive
Sales 717-626-1151

Lititz, PA 17543
24 Hr. Service

DeLaval

BLUE DIAMOND
MANUFACTURING CO.

Universal Germania

Serving Southeast PA, Northeast MD, and Eastern Shore area with quality milking equipment, 24-hour service and dairy supply routes

JB Zimmerman & Sons
Since 1931

DAIRY EQUIPMENT DIVISION
P.O. Box 337 Blue Ball, PA 17506
East Of New Holland On Rt. 23
CALL (717) 354-8030

THIS WEEK'S SPECIAL

WE SELL/RENT E-Z HUTCHES



Also mini-barns in stock.
Call Today For Details



Martin's Farm Supply

is a Manufacturer of Gates, Freestalls, Headlocks, Slant Bar and Fence Panels Made of Sched. 40 Pipe. Compare our Hot-Dipped Galv. Products - Quality. It is superior to any paint.

We specialize in Custom Manufacturing to your needs.

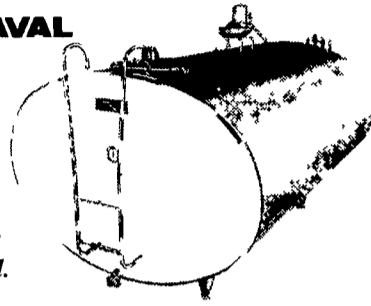
No job too small or too Large.

Call (717) 597-4283 For Info.

OUR SPECIALTY IS
SALES AND SERVICE OF
NEW & USED BULK MILK TANKS

α DE LAVAL

Featuring
The
DeLaval
New Century
600-5,000 Gal.



We Will Service Any Make Bulk Tank

H.W. MARTIN REFRIGERATION SERVICE

501 E. Woods Dr. Lititz, PA 17543
Phone: (717) 626-6355

2000 gal Mueller OH milk tank w/2 5hp compressors. 215-598-3607.

Heavy use gates: 8', 10', 14'. Priced to sell. 717/463-2807.

USED TANKS

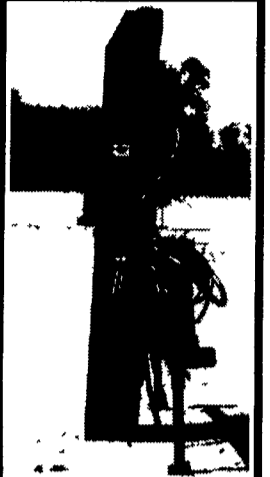
- 2500 Gal. Mueller OH
- 2000 Gal. Mueller OH
- 1500 Gal. Mueller OE
- 1000 Gal. Mueller OH
- 1000 Gal. Surge
- 900 Gal. Mueller OH
- (2) 800 Gal. Mueller OH
- (2) 800 Gal. Surge
- 700 Gal. Mueller M
- (3) 625 Gal. Sunset
- 600 Gal. Mueller M
- 545 Gal. Sunset
- 400 Gal. Mueller M
- 400 Gal. Sunset
- (4) 300 Gal. Mueller M

Hagerstown, MD
301-797-3921

LIVESTOCK EQUIPMENT

January Special 10% Off

POST DRIVERS Heavy Duty



Mounting Options Include:
3 Pt. Hitch - Skid Loader,
SWIVEL - FOR EASY
PLUMBING OF DRIVER

We also Manufacturer
Gates, Feeder Panel Gates
& Headlocks for all your
Fencing and Partition needs

ELIMSPORT MFG.

16213 S. RT. 44,
Allenwood, PA 17810
888-462-4124
570-547-2476

LIVESTOCK EQUIPMENT

STONEY CREEK

CONTRACTOR SERVICES

EQUIPMENT RENTALS

Rent For Less!



- Crawler Dozers • Crawler Loaders
- Backhoes • Ram Hammers • Excavators
- Vibratory Compactors • Telescope Forklifts

415 Park Road
FLEETWOOD, PA 19522

(610) 944-5332
FAX (610) 944-6673

RUBBER MATS

for

Comfort Stalls, Free Stalls, Horse Stalls,
Horse & Cattle Trailers, Hog Houses.
Used Belting Material.

Welsh Hill Farm Supply
Paul N. Brubacher

610-286-5298 or

Raymond 610-286-0168
Glenn 610-286-0706

LIVESTOCK EQUIPMENT

KEYSTONE FENCE SUPPLIES

(717) 738-0923



Split Rail
Locust And Treated Pine Posts
Hemlock and Treated Poplar Rails

Board Fence
1"x6"x16 Oak &
Treated Pine

Slip Board
1"x6"-10' Oak &
Treated Pine

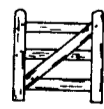


Diamond Mesh



2x4 Non Climb
Woven Wire Hi Tensile
Solid Lock Deer/Game

Class
3 Galv



Board Gates &
Split Rail Gates

Complete Line
Of Hi-Tensile
Fence Supplies



Tubular Steel Gates

Round Posts

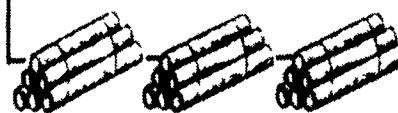
- 2"x3" - 7' & 8'
- 3"x4" - 6 1/2' - 7' - 8' - 10'
- 4"x5" - 6 1/2' - 7' - 8' - 10'
- 5"x6" - 6 1/2' - 7' - 8' - 10' - 12' - 14'
- 6"x7" - 6 1/2' - 8' - 10' - 16' - 20' - 25'

40 CCA (30 Year) Pressure Treated Posts

Square Post

- 4"x4" - 7' - 8'
- 3"x6" - 7' - 8'
- 4"x6" - 7' - 8'
- 6"x6" - 8'

★ Deliveries Available ★



EPHRATA, PA 17522

A 1st Class Team Together For 30 Years!

RUFUS BRUBAKER REFRIGERATION

And...

MUELLER
DAIRY FARM EQUIPMENT

MUELLER'S NEWEST ADDITION...

to its milk cooling product line is the Energy Star, an out-of-this-world, high-efficiency refrigeration unit powered by a reliable Copeland-Compliant Scroll. Contact one of our three locations.



Southern Service Center
76 Pumping Station Rd.
Quarryville, Pa.
717-786-1617
Vic Leininger
Mailing Address:
1028 Mt. Pleasant Rd.
Quarryville, PA 17566

MAIN OFFICE

1048 North Penryn Rd.
Manheim, Pa. 17545

717-665-3525

Ken Brubaker

Northern Service Center
541 Frystown Rd.
Myerstown, Pa.

717-933-4711

Ken Kopp

1-800-330-6639

★ Call Today For All Your New or Used Milk Tank And Refrigeration Equipment Needs!