

Leesport Livestock Auction

Leesport, Pa.
Jan. 24, 2001

Report Supplied By PDA

CATTLE 278...(PDA)...(Supply included 84 steers and heifers, 139 cows, 7 bulls and 48 feeder cattle)...Compared with last week's sale...steers steady to 1.00 higher on moderate supply, cows active, mostly 1.00 to 3.00 higher, heifers 1.00 to 2.00 higher, bulls steady.

STEERS: Choice 2-3 1060-1375 lbs 74.50-80.50, Select 1-3 60.00-67.25, one Standard 1-2 54.00.

HOLSTEIN STEERS: few High Choice and Prime 2-3 1390-1435 lbs 69.50-70.50, Choice 2-3 1345-1655 lbs 65.25-68.25, Select 1-2 58.75-65.00, Standard 1-2 45.50-59.25.

HEIFERS: Choice 2-4 1000-1475 lbs 74.75-78.75, Select 1-3 66.00-74.00, one Standard 1-2 48.00.

COWS: Breakers 75-80% lean 40.75-46.75, few to 49.50, Boners 80-85% lean 38.00-46.85, Lean 85-90% lean 35.00-43.75. Shells 33.00 and down.

BULLS: one Yield Grade 1 2030 lbs 57.75, Yield Grade 2 950-1535 lbs 43.00-51.50.

FEEDER CATTLE: STEERS: Large 2 275-595 lbs Holsteins 72.00-83.00, Medium and Large 2 345-435 lbs 70.00-86.00, 670-1000 lbs 57.00-80.00; **HEIFERS:** one Large 2 385 lbs Holsteins 93.00, one Medium 2 405 lbs 78.00, Medium and Large 2 590-795 lbs 58.50-79.00; **BULLS:** Large 2 460-525 lbs Holsteins 40.00-67.00.

CALVES 150...Vealers 10.00 to 20.00

higher. **VEALERS:** Standard and Good 75-140 lbs 55.00-85.00, Utility 55-95 lbs 5.00-50.00.

FARM CALVES: Holstein bulls 5.00 to 10.00 higher, Holstein heifers steady...No 1 Holstein bulls 90-125 lbs 135.00-150.00, No 2 90-125 lbs 80.00-140.00; one No 1 Holstein heifer 90 lbs 225.00, few No 2 75-80 lbs 50.00-100.00.

HOGS 37...Barrows and gilts small supply mostly steady, sows 1.00 to 3.00 lower. **BARROWS AND GILTS:** 49-54% lean 285 lbs 41.00, lightweights 215-220 lbs 26.75-34.75, 45-50% lean 250-255 lbs 36.00-36.25.

SOWS: one US 1-3 460 lbs 27.50, couple 505 & 545 lbs 24.50 & 29.50.

BOARS: one 195 lbs 23.00, couple 645 & 725 lbs 14.50.

FEEDER PIGS 20...US 1-3 50 lbs 72.50, 85-125 lbs 50.00-55.00 per cwt.

SHEEP 34...Slaughter lambs steady. **SLAUGHTER LAMBS:** Choice 55-80 lbs 90.00-115.00, 85-120 lbs 87.00-97.50, one Good and Choice 55 lbs 55.00.

SLAUGHTER SHEEP: 40.00-70.00.

GOATS 10...(All sold by the head) One Medium Billy 62.50, Medium Wether 53.00-80.00, Large Kids 35.00-65.00.

Westminster Livestock

Hagerstown, Maryland

Report Supplied by Auction

Tuesday, January 23, 2001

SLAUGHTER COWS: 87 HEAD, STEADY SPOTS 1.00 HIGHER. UTILITY 41.00-45.50, HIGH DRESSING 46.00-48.50, CANNERS 38.00-42.50, SHELLY 38.00 DOWN.

BULLS: 5 HEAD. YG#2 1300-1600 LBS. 49.00-55.00.

FED STEERS: 29 HEAD, 1.00 LOWER. HIGH CHOICE TO PRIME 1100-1400 LBS. 79.75-82.00; CHOICE 2-3 76.00-78.50, LOW CHOICE 73.00-77.00, OVER 1400 LBS. 70.00-72.00.

FED HEIFERS: CHOICE 1200 LBS. TO 78.00, SELECT TO 65.50, HOLSTEINS LOW CHOICE 1300 LBS. TO 53.50.

CALVES: 80 HEAD, GOOD SLAUGHTER. 85-125 LBS. 60.00-70.00, 70-85 LBS. 50.00-60.00; **HOLSTEIN BULLS** RETURNING TO FARM 10.00-20.00 HIGHER. #1 90-120 LBS. 140.00-160.00, 80-90 LBS. 97.00-115.00; #2 90-120 LBS. 80.00-135.00, 80-90 LBS. 72.00-90.00; **HOLSTEIN HEIFERS** 12 HEAD HIGHER PRICES. #1 90-120 LBS. 250.00-340.00, #2 70-95 LBS. 150.00-250.00; **BEEF X BULLS** TO 152.00.

BUTCHER HOGS: 51 HEAD. #1 AND 2 230-265 LBS. 36.00-37.75, 280-290 LBS. TO 37.25; #1 AND 3 220-240 LBS. 34.00, 280-350 LBS. 33.00-35.25.

SOWS: 400-500 LBS. 28.50.

BOARS: 300-675 LBS. 13.00-14.00.

STOCK CATTLE: 79 HEAD. STEERS MED. AND LARGE FRAME 200-400 LBS. 79.00-98.00, 400-600 LBS. 80.00-92.00, 600-700 LBS. 75.00-80.00, 900-1075 LBS. 66.50.

HEIFERS: MED. AND LARGE FRAME 200-500 LBS. 79.00-92.00, 500-700 LBS. 69.00-87.00.

BULLS: MED. AND LARGE FRAME 300-500 LBS. 82.00-94.00, 500-600 LBS. 77.00-91.00, 600-800 LBS.

65.00-75.00, 800-1000 LBS. 54.00-62.00.

SHEEP: 14 HEAD 42.00-63.00.

LAMBS: 37 HEAD. HIGH CHOICE TO PRIME 95-125 LBS. 80.00-88.00, 70-90 LBS. 91.00-105.00, 60-70 LBS. TO 112.00; MED. TO GOOD 80-120 LBS. 69.00-88.00.

GOATS: 23 HEAD. LARGE BILLIES 120.00-140.00, MEDIUM 44.00-70.00, LARGE NANNIES 87.00-117.00, MEDIUM NANNIES 50.00-90.00.

PIGS AND SHOATS: 42 HEAD. BY THE HEAD, 1 LOT 45 LBS. AT 31.00, 1 LOT 65 LBS. AT 35.00; BY THE LB. 15 HEAD 100-110 LBS. 52.00-53.00, 9 HEAD 70 LBS. AT 55.50, SINGLES 120-150 LBS. 47.00-49.00, STOCK BOARS 312 LBS. AT 19.00.

Four States Livestock

Hagerstown, Maryland

Report Supplied by Auction

Wednesday, Jan. 24, 2001

SLAUGHTER COWS: 70 HEAD, 1.00-2.00 HIGHER! UTILITY 43.00-46.00, HIGH DRESSING 47.00-49.00, CANNERS 40.00-44.00, SHELLY 39.00 DOWN.

BULLS: 6 HEAD, 2.00 HIGHER. YG#1 1800-2100 LBS. 52.00-55.25, 1 LOW DRESSING AT 48.50; 1 FAT HEREFORD 2370 LBS. AT 42.50.

FED STEERS: 20 HEAD. HIGH CHOICE TO PRIME 1200-1400 LBS. TO 81.50, 1 AT 84.00, FEW 1500-1650 LBS. 75.00-79.00, CHOICE 2-3 1200-1400 LBS. 76.00-79.25, LOW CHOICE DAIRY X 1300-1650 LBS. 60.00-62.50, SELECT 50.00-55.00.

FED HEIFERS: HIGH CHOICE TO PRIME 1100-1400 LBS. 78.00-81.50, LOW CHOICE TO 76.75, 950 LBS. AT 66.00.

CALVES: 111 HEAD. GOOD SLAUGHTER 80-115 LBS. 60.00-75.00, CULLS 50.00 DOWN; **HOLSTEIN BULLS** RETURNED TO FARM 10.00-20.00 HIGHER. #1 95-130 LBS. 135.00-165.00, MAINLY 150.00-160.00, 85-95

LBS. 110.00-140.00; #2 95-130 LBS. 100.00-130.00, 80-90 LBS. 75.00-105.00; **HOLSTEIN HEIFERS** FEW #1 90-120 LBS. 240.00-300.00, #2 DOWN TO 145.00.

BUTCHER HOGS: NONE. **SOWS:** 300-400 LBS. FEW 36.00-45.00, 400-500 LBS. 31.00-40.00, 500-600 LBS 30.00-34.00.

BOARS 350-650 LBS. 13.00-14.00. **STOCK CATTLE:** 45 HEAD STEERS, FEW OFFERED.

HEIFERS: MED. AND LARGE FRAME 200-400 LBS. 80.00-88.00, 500-700 LBS. 73.00-80.00; **BRED STOCK COWS** 1200-1400 LBS. 48.00-59.00.

BULLS: MED. AND LARGE FRAME 300-500 LBS. 83.00-86.00, 500-700 LBS. 70.00-80.00, **HOLSTEINS** 54.00-62.00; **DAIRY REPLACEMENTS** 24 HEAD. LARGE SPRINGERS 1175-1375 LBS. MED. 775.00-1075.00; **MILK COWS** LARGE 800.00-950.00, MED. 550-750 LBS., SMALL 400-550 LBS. SMALL TO MED. OPEN HEIFERS 320.00-670.00.

PIGS AND SHOATS: 41 HEAD, MAINLY CULLS. BY THE HEAD 60-90 LBS. 24.00-30.00; BY THE LB. 110-175 LBS. 34.00-45.00.

New Holland Horses

New Holland Sales Stables

Report Supplied by Auction

Monday, Jan. 22, 2001

110 HEAD, MARKET STRONG WORK HORSES 350.00-1175.00. **DRIVING HORSES** 400.00-775.00. **RIDING HORSES** 400.00-975.00. REGISTERED RIDING 1400.00-1600.00.

BETTER RIDING 1200.00-2500.00. **PONIES** 200.00-310.00. **LARGE PONIES** 275.00-425.00. **COLTS** 300.00-400.00

LANCO CONCRETE WALLS, INC.

• Agricultural • Commercial • Residential

We Do NHC's Approved Work • Quality Workmanship

- Retaining Walls
- Bunker Silos
- Manure Pits
- Slatted Floor Deep Pits
- Footers
- Flatwork

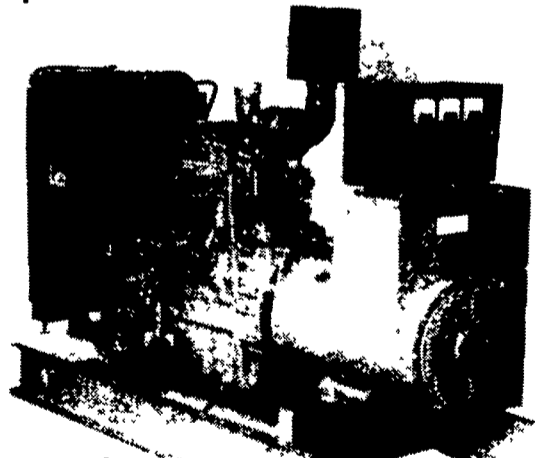
LANCO CONCRETE WALLS, INC.

PO BOX 256, Bird-In-Hand, PA 17505

CONTACT: Steve Petersheim, Jr (717)291-4585 • FAX (717)291-4686

Agricultural Generators

Spectrum Detroit Diesel



Automatic L.P. Gas, Diesel, Natural Gas Generators 5 to 2,000 KW

P.T.O. Generators 25 to 135 KW Units In Stock!

Service - Rental - New & Used Units In Stock

PENN POWER SYSTEMS

Power Generation Systems Specialists

330 Fonderwhite Road, Lebanon, PA 17042

Call Leonard Martin 717-273-4544

Fax 717-273-5186

IDEAL LEAF TOBACCO COMPANY

will be receiving tobacco for processing and buying

Jan. 31 and Feb. 1 & 2

Call before delivery.

717-529-6416
717-575-2525

FARMERS!!!

Sell your fruits and vegetables at farmers' markets in Philadelphia.

Philadelphia city dwellers love the taste of fresh, farm-grown fruits and vegetables.

Do you grow or produce any of the following? (Farms of any size are welcome!)

- Organic and conventionally grown vegetables
- Tree fruit and berries
- Cut flowers, potted plants, and herbs
- Chicken, lamb, pork, beef, goat meat
- Fish from the sea or hatcheries
- Eggs, milk, cheese, and honey
- Bakery goods of all kinds
- Jams, jellies, and preserves

If you do, call

Bob Pierson
Toll free (866) 745-6587
or e-mail: phillymarkets@aol.com

for information about market locations and schedules.



Farm to City is a program of the Oley Institute