

**Public Auction Register**

Closing Date Monday 5:00 P.M.

of each week's publication

Internet Sale Register will be updated every Sat. at 2:23 P.M.

**ATTENTION Auctioneers**

All sales register info needs complete address, street, town, county & state.

SAT APR 7 Horse Sale 10AM - Mel's Stables 834 Wallace Rd New Holland 17557

SAT APR 7 8:30 Tack 11AM Horses Special Riding Horse Sale Middleburg Livestock Auction PO Box 185 Middleburg Pa Clarence Shirk 717-656-8793 John Shirk 570-837-9935

SAT APR 7 9AM Isaac and Fannie Zimmerman 138 Linden Grove Rd New Holland Pa Household Goods Antiques furniture and tools Groff Auct

SAT APR 7 9AM Inventory reduction sale over 500 pieces new & used farm industrial tractors machinery equip trailers lawn & garden misc Marshall Machinery Inc Rt 652 Honesdale Pa 570-729-7117

SAT APR 7 9:30AM Farm machinery & lawn & garden tractors For Elwood "Woody" C Flowers Village of Richfield Juniata Co. Pa Roger A Lauver auct Au 002634-L

THURS APR 12 12 Noon Dairy Sale Middleburg Livestock Auction PO Box 185 Middleburg Pa Clarence Shirk 717-656-8793 John Shirk 570-837-9935

THURS APR 12 5 PM Goodville Fire Co Annual Lwn & Garden Auction 717-445 4040

SAT APR 14 9AM Wolgemuth's annual spring consignment auction 2101 Valley Rd Manheim Lanc Co Pa Tractors farm equip lawn & garden Wolgemuth Auction Service 717-365 6684

TUES APR 17 - Fat Cattle Sales Carlisle Livestock Market Inc 548 Alexander Spring Rd Carlisle Pa

TUES APR 17 - 7:45 PM Feeder Cattle Sales Carlisle Livestock Market 548 Alexander Spring Rd, Carlisle Pa

WED APR 18 & THURS APR 19 Marion Auction Service 5174 -10rst Rd Chambersburg Pa

THURS APR 19 1PM Real estate antiques personal proper-

y, 160 N Man St Manheim Pa Dorothy Shank Witman Aucts

FRI APR 20 - 9AM Equipment Sale Middleburg Livestock Auction PO Box 185 Middleburg Pa Clarence Shirk 717-656-8793 John Shirk 570-837-9935

FRI APR 20 1 PM State Graded Feeder Pig Sales Carlisle Livestock Market Inc 548 Alexander Spring Rd Carlisle Pa

FRI APR 20 - 7 PM Horse Sale New Holland Sales Stables Inc

101 W Fulton St, New Holland, PA 17557

FRI APR 20 - 7 PM Feeder Sale Middleburg Livestock Auction PO Box 185 Middleburg Pa Clarence Shirk 717-656-8793 John Shirk 570-837-9935

SAT APR 21 - 9AM Farm equip furniture antiques, personal property for Lloyd & Elizabeth Denlinger 3060 Harrisburg Pike Landisville Lanc Co, Pa John D Stauffer Auct AU-1509-L

**PUBLIC AUCTION WILLIAMS COMPLETE HERD DISPERSAL**

on farm 4 miles NE of West Franklin, Pa. off Rt. 414

**SAT. FEB. 10, 10 AM**

**145 DAIRY CATTLE 145**

Jerseys - Black Jerseys - Linebacks Ayrshires- Holsteins

110 milking age, 40 Jerseys, (10 registered), 20 Black Jerseys, 5 linebacks, 15 Ayrshires, 10 holsteins. 11 due sale time. 15 just fresh, 25 due March & April. Balance heifers from babies to bred.

ALSO SOME MACHINERY SELLS FIRST. CATTLE AT 11 AM.

Owner, **Mitchell Williams** (570) 364-5098



Conducted By  
1515 Kepner Hill Road  
Muncy, PA 17756  
PA Lic. #RY 71L  
(570) 546-6907

Watch for larger listing

**FRALEY'S DAIRY SALE**

Over 125 consigned already **DAY SALE**

at our Complex, Muncy, Pa.

**SAT. JAN. 27, 2001**

Starting 12 Noon  
2 HERDS

**HERD #1:** 45 head freestall cattle from Tioga County, 41 Holsteins, 4 Jersey crosses, 35 milking, 10 dry, 12 fresh last 60 days.

**HERD #2:** 40 fancy Holsteins from the Prestons of Lawrenceville, Pa several just fresh - several 1st calf heifers Original cattle were all registered never kept up the papers RHA 18,000 on just grain corn silage & dry hay Great set of cows - anybody will like them Tie stall out every day SPECIAL Note Pair of Avalanche daus from herd sell was on Sire Power cover

AI Bred & AI sired  
Everything shot for shipping fever - vet checked



Conducted By  
1515 Kepner Hill Road  
Muncy, PA 17756  
PA Lic. #RY 71L  
(570) 546-6907

**3rd Annual MULE SALE**

9:00 AM 9:00 AM

Sale held at Mel's Stable, 834 Wallace Rd. New Holland, PA.

**Wed., Feb. 7, 2001**

Location: From Route 23 in New Holland, take Brimmer Ave., South approx. 2 miles to Hill Rd. Turn left to sale on left. OR From Intercourse, Take 340 East to New Holland Rd., turn left to Hill Rd., turn right to sale on left.

**Approx. 250 Head of Mules**  
Hitch Time 8:00 AM  
Sale Time 9:00 AM

If you are looking to sell good big strong mules, Please call (717) 354-6431 or (717) 786-7990 at 8:00 AM. If you are looking for good big acclimated mules, don't miss this sale.

Sale order - 9:00 AM Starting with approx. 50 head of weanling & yearling mule colt followed by mature mules

Terms By

Jonas S. King and Mel Hoover

All Advertised Items Subject to Prior Sale  
Cash or Honorable PA Check Only  
All Announcements Sale Day Take Precedence Over All Advertising.  
Not Responsible for Accidents  
Food on Premises

Auctioneer: Mel Hoover  
AU-003111-L  
717-354-8397 Home  
or 717-354-6431 Barn

**Dairy and Livestock Sales**

**MERCER LIVESTOCK AUCTION**

RT. 19 MERCER, PA, EXIT 2 OFF OF PA I-18

First Annual Dairy Consignment Auction

**FRI., JAN. 26, 2001**  
@ 11:00 A.M.

All Dairy Breeds (Registered And Grade) Adults, Heifers, Bulls, Calves, All Animals Will Be Checked By Our Veterinarian

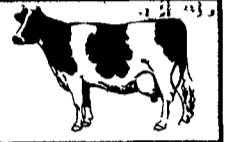
Livestock Auction Every Tuesday At Noon  
Open All Day Monday Til 9:00 PM  
Taking Livestock For Tuesdays Sale  
1-800-760-6994 724-662-2910 Eve 724-962-2653

WWW.MERCERLIVESTOCK.COM  
E-MAIL trish@mercervivestock.com

**NOTICE**

To assure that your Public Sale appears in the Public Sale Section we must have your advertisement by 5 P.M. Tuesday of each week's publication.

**NEW HOLLAND SALES STABLES, INC.**



New Holland, Pa.

Located 12 Miles East of Lancaster, just off Rt. 23

**DAIRY SALE WEDNESDAY, JAN. 24, 2001**

10:30 AM OPEN BRED HEIFERS  
12:00 NOON BULLS, FRESH COWS, SPRINGERS

**Weekly Consignors**

• Merle Breneman • Leroy Smucker • Jim Hostetter  
• Marvin Eshleman • Dale Hostetter

**SPRINGERS and FRESH COWS**

Small Herd from Western PA  
Selling--- Year Around Herd  
AI Breeding...

Northern PA Herd Sells Jan. 31, 2001  
60 Cows - 25 Heifers

Reg. Holstein Bull Sells, Dams Records  
Over 31,000, Top Pedigree

**NOTE TO CONSIGNORS!**

Please send all information along with your cattle Tues. Fresh Date, Breeding Dates, Milk Weights, with your trucker.

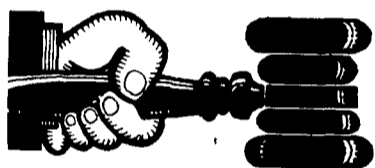
Sale Managed By

**New Holland Sales Stables, Inc.**

Barn 717 354-4341 Fax 355 0706 Home 717 397-5538  
Norman & David Kolb, Mgrs. 61L

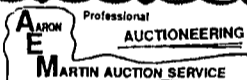
**NOTICE!!!**

Look For Public Sales Scheduled Past Deadline On Second To Last Page Of Section A



**AUCTIONEER'S DIRECTORY**

Call 717-626-1164 to list your auction service.



Professional AUCTIONEERING  
410 W. Church Rd.  
Ephrata, PA 17522  
(717) 733-3511

Real Estate • Farm Equipment  
• Antiques • Household Goods

It doesn't cost to use our Auction Service...It Pays.  
**CALL TODAY!!**



John D. Stauffer  
Auctioneers

1484 Mountain Road, Manheim, PA 17545

Fulltime Courteous Professional Auction Service Since 1976

Real Estate • Farm Equipment • Antiques  
Personal Property • Livestock

Phone 717-665-5099

**KREIDER, KLINE & GOOD**

AUCTIONEERS

COMPLETE PROFESSIONAL AUCTION SERVICE  
REAL ESTATE - FARMS & RESIDENTIAL  
PERSONAL PROPERTY - ANTIQUES -  
FARM STOCK SALES - LIQUIDATIONS

RANDAL V. KLINE LLOYD H. KREIDER  
AUCTIONEER REALTOR AUCTIONEER  
717-733-1006 717-786-3394

ROY E. GOOD, JR.  
AUCTIONEER  
(717) 445-4309

**HFA HORNING FARM AGENCY, INC.**

REALTORS • AUCTIONEERS • APPRAISERS

Merle Eberly AU-2417-L • Alvin Horning AU-0433-L  
Elton Horning AU-0434-L

Morgantown, PA (610) 286-5183

- >> Courteous Real Estate Services
- >> Professional Auctioneers
- >> State Certified Appraisers
- >> Specializing in Farms and Land

