

North Atlantic Eggs

Atlanta, Georgia
Report Supplied by USDA
January 18, 2001

In Boston, prices were unchanged to one cent higher for the larger sizes and unchanged on mediums. In New England, prices were one cent higher on extra large and large, unchanged on the remainder of sizes. In Philadelphia, prices remained unchanged. The market tone was steady for white eggs and steady to fully steady for brown eggs. Demand ranged light to fairly good, best where retail items were featured. Supplies of white eggs were adequate to instances available and brown eggs were short with some resistance to paying premiums. Breaking stock offerings were usually adequate for the fair demand. Light type hens were sufficient for slaughter needs.

PHILADELPHIA: PRICES TO RETAILERS, SALES TO VOLUME BUYERS, USDA GRADE A AND GRADE A, WHITE EGGS IN CARTONS, DELIVERED STORE DOOR, CENTS PER DOZEN. RANGE: EXTRA LARGE 71-77.5, LARGE 69-75.5, MEDIUM 62-66.5.

BOSTON: PRICES TO RETAILERS, SALES TO VOLUME BUYERS, USDA GRADE A AND GRADE A, BROWN EGGS IN CARTONS, DELIVERED STORE DOOR, CENTS PER DOZEN. RANGE: EXTRA LARGE 110-117, LARGE 101-108, MEDIUM 79-81.

NEW ENGLAND: PRICES PAID TO PRODUCERS, CASES EXCHANGED, GRADE YIELD BASIS, BROWN EGGS LOOSE, AT FARM, CENTS PER DOZEN. RANGE:

JUMBO 127-130, EXTRA LARGE 97-100, LARGE 88-91, MEDIUM 60-63, SMALL 21-24

Northeast Broiler Fryer Parts Part I

ATLANTA, GA.
January 17, 2001
Report Supplied By USDA

Trucklot buying activity was limited today, although, dealers were assessing the market and attempting to secure product. Offerings of bone-in breasts were increasingly limited in availability and were mostly tight overall.

However, boneless-skinless breasts were generally sufficient. Wings were usually adequate, and dark meat parts were available. Movement into retail and distributive channels was light. The market tone was fully steady to firm on bone-in breasts, about steady on the balance.

ICE PACKED BROILER/FRYER PARTS, DELIVERED TO FIRST RECEIVERS IN POOL TRUCKLOT AND TRUCKLOT QUANTITIES, CENTS PER POUND. ITEM CURRENT NEGOTIATED TRADING BREAST - B/S 115-120 TENDERLOINS 130-135 BREAST - WITH RIBS 55-56 BREAST - LINE RUN 55 LEGS 33-34 LEG QUARTERS (BULK) 20-21 DRUMSTICKS 26-27 THIGHS 29-30 B/S THIGHS 78-79 WINGS (WHOLE) 90-91 BACKS AND NECKS (STRIPPED) 10-12 LIVERS (5 POUND TUBS) 35-40 GIZZARDS (HEARTS) 60-65

INCLUDES NEW YORK CITY METROPOLITAN AREA, NORTHERN NEW JERSEY, MASSACHUSETTS, CONNECTICUT, RHODE ISLAND, AND PENNSYLVANIA (NORTHEAST OF HARRISBURG).

North Atlantic Shell Egg Market

Atlanta, GA

January 17, 2000

Report Supplied By USDA

In Boston, prices were slightly higher for the larger sizes and unchanged on mediums. In most other areas, prices were unchanged on all weights. The market tone was mostly steady. Demand into all outlets was light to good, best where features provided additional movement. Supplies of white eggs were adequate to fully adequate and brown eggs were short. Breaking stock offerings were generally adequate for the fair to moderate demand. Light type fowl were sufficient for processing schedules.

Livestock Cooperative Auction Market of North Jersey Poultry & Egg

Hackettstown, N.J.

Report Supplied by Auction

Tuesday, Jan. 16, 2001

HEAVY FOWL .35-.90 LB.
MIXED FOWL 1.75 EA.
ROASTERS .30-.45 LB.
ROOSTERS 7.00 EA., .70-1.50 LB.
DUCKS .50-1.10 LB.
RABBITS 1.50-3.00 EA., .40-1.40 LB.
PIGEONS 2.50-4.00 EA.
GUINEAS 3.00-4.50 EA.
GRADE A EGGS: WHITE JUMBO, EX. LRGE. .76-.78, LARGE .70-.75; BROWN EGGS JUMBO, EX. LRGE. .80-.85, LARGE .75-.80, MED. .65.

Daily National Grain Market Summary

St. Joseph, MO

January 17, 2001

Report Supplied By USDA

Wheat and soybeans bids finished lower but corn bids rebounded after consecutive days of low closes. Wheat 2 to 6 cents lower. Corn 1 to 2 cents higher. Sorghum 4 cents higher. Soybeans 2 to 5 cents lower.

Wheat bids were lower due to beneficial snow cover over in winter wheat growing areas. Corn bids slightly higher resulted in some fund buying taking place on the Board. Soybeans bids were lower as continued good weather and an increase soybean production for South America. However, overnight export bean sales limited losses.

EXPORT SALES: PURCHASER COMMODITY TONNAGE DELIVERY DATE CCC Ethiopia Hard Red Winter 64,590 Jan/Feb CCC Kenya Hard Red Winter 15,000 Jan/Feb South Korea 11.5 pct Hard Red Winter 4,600 Apr 14.0 pct DN Spring 3,600 Soft White 16,800 Taiwan Soybeans 56,000 Feb

Total: Wheat 100,990 tonnes. Soybeans 56,000 tonnes.

THESE MAY NOT BE THE ONLY EXPORT SALES THAT HAVE TRANSPIRED, BUT THEY ARE THE ONLY SALES THAT COULD BE CONFIRMED BY USDA GRAIN MARKET NEWS.

DATE CHANGE YEAR AGO TRUCK BIDS: 01/17/01 01/16/00 01/19/00 Wheat: Kansas City (HRW ORD) 2.99-3.01 dn 3-2 2.61-2.62 Minne-

apolis (DNS 14pct) 3.54 1/2 dn 6 3.39 1/2 Portland (SWW) 2.96-2.99 up 2 2.94-2.95 St. Louis (SRW) 2.50-2.51 dn 4 2.44-2.45

Corn, US 2 Yellow: Kansas City 2.06-2.08 up 2 2.06-2.08 Minneapolis 1.85 1/2 up 1 1/4 1.83 1/4 So. Iowa 1.97-2.01 dn 3-2 2.06 Omaha 1.91-1.92 up 2 1.89-1.91 Soybeans, US 1 Yellow: Kansas City 4.61 dn 5 4.81-4.83 Minneapolis 4.37 3/4 dn 4 3/4 No Bid So. Iowa 4.56-4.64 dn 2-1 4.84 Cent. II Processor 4.68 1/4-4.76 3/4 dn 2 1/4-up 1 1/4 4.86-4.95

Minneapolis truck wheat - to arrive 20 days

FUTURES Kansas City (Mar) Wheat 3 30 1/2 dn 3 1/4 2.93 1/2 Minneapolis (Mar) Wheat 3.27 1/2 dn 3 3.27 1/2 Chicago (Mar) Wheat 2.82 1/2 dn 2 3/4 2.66 Chicago (Mar) Corn 2.17 1/2 up 1 1/4 2.20 1/4 Chicago (Mar) Soybeans 4.72 3/4 dn 4 1/4 5.01

EXPORT BIDS: Barge or rail, Port of New Orleans or North Texas Gulf.

Bids per bushel except sorghum per cwt.

US 1 HRW Wheat, Ord Protein: 3 60 1/2-3.63 1/2 dn 3 1/4-5 1/4 2.89 1/2-2.97 1/2 US 2 Soft Red Winter Wheat: 2 96 1/2-2.97 1/2 dn 2 3/4 2.75-2.76 US 2 Yellow Corn: 2.38 1/2 up 1/4-dn 1/4 2.37 1/4-2.39 1/4 US 2 Yellow Sorghum: Rail 4.49-4.54 up 2-dn 2 4.07-4.12 Barge 4.62-4.72 dn 3-up 2 4.25 US 1 Yellow Soybeans: 5.11 1/4-5.13 1/4 dn 4 3/4-5 3/4 5.28

Belleville Hay

Belleville, Pa.

Report Supplied By Auction

Wednesday, Jan. 17, 20010

Hay—Straw—Grain

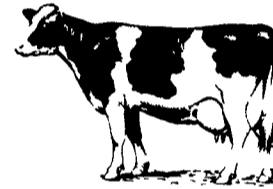
ALFALFA HAY: 70.00-132.50.

MIXED HAY: 60.00-97.50.

STRAW: 67.50-130.00.



PENNFIELD DAIRY DAYS



January 2001

Monday	Tuesday	Wednesday	Thursday
22		24	25
29			



February 2001

Monday	Tuesday	Wednesday	Thursday	Friday
			1	2
5	6	7	8	9
12	13	14	15	16
19	20	21	22	23

Dan McFarland
Penn State Capital Region
Dairy Housing Extension Specialist
"Ventilation and Lighting; Stall Design and Surface; Feed and Water"
Jan. 23, 24, 25 • Feb. 21

David Wolfgang, VMD
Penn State Field Veterinary Studies Director
"Preventing Disease in the Milking Herd; Johnes and Neospora Update"
Jan. 30, 31 • Feb. 1, 13, 15

Randy Shaver, Ph.D.
Professor of Dairy Science, University of Wisconsin
"New Methods for Evaluating Corn Silage; Feeding the Transition Cow"
Feb. 5, 6, 7

Arlen Mills, DVM
Penn State Capital Region Extension Veterinarian
"Hoof Health"; Management and Infectious Issues
Feb. 22

Tim Snyder Ph.D.
Manager Pennfield Dairy & Livestock Nutrition
"What's New in Cow Feed in 2001"
Jan. 23, 24, 25, 30, 31 • Feb. 1, 5, 6, 7, 13, 15, 21

30 Minutes before start of meeting there will be milk, coffee & donuts!!

For Reservations Call Customer Service 1-800-995-0333



★ Transportation Available

pennfield feeds

www.dairyfeed.com