

Salesmen:  
Alvin Martin  
Bill Ryland



# WENGBERS OF MYERSTOWN

## FARM MACHINERY

(717) 866-2135

# WOODS

814 S. COLLEGE ST. (ROUTE 501)

www.wengers.com

MYERSTOWN, PA 17067



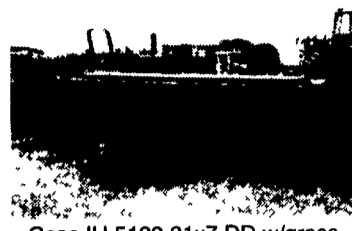
**SNOWBLOWERS**  
4', 5', 6', 7' and 8' in Stock Now  
Also a 5-1/2' for Skid Steer



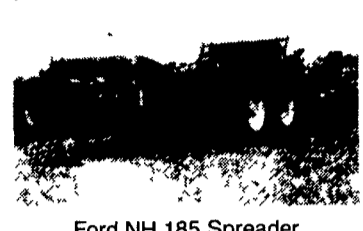
JD 146 Loader w/Joystick Valve,  
6' Bucket, Bracket to Fit 2640,  
2550, etc.



Miller 8' Offset Disc, Good Condition



Case IH 5100 21x7 DD w/grass  
seed box and press wheels,  
very nice



Ford NH 185 Spreader  
w/Top Beater and Tailgate



John Deere 2040 w/Loader and  
John Deere 2240 w/Loader

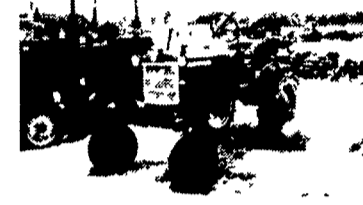


New Idea 3709 Spreader (sharp)  
also a Hesston S-90, very nice

**CORN PLANTERS**  
JD 7200 6R 30" maximerge II, dry  
fert, min tils, insecticide, nice  
JD 7200 4R 30" maximerge II, dry  
fert, min tils, nice  
JD 7000 4R 38", dry fert, min tils  
IH 800 4R 30", liquid, conventional,  
540 pump  
2) IH 56 4R 38", dry fert, both nice  
MF 2R 40" 3 pt, dry fert  
2R mounted for AC 'C'  
1R mounted for JD 330 standard  
JD 70 single row units



John Deere 714 7T Soil  
Saver/Colter Chisel, Nice



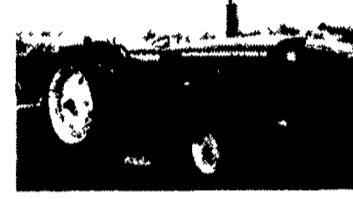
Farmall Cub Tractor w/Hydraulics,  
Runs Very Good and Is Nicely  
Repainted (Attachments Available)



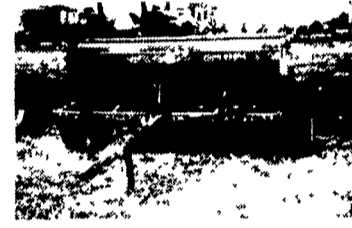
1976 International 766  
w/Hinker Cab



(2) NH 311 Balers w/Throwers,  
Both Are Exceptional Quality



John Deere 2020 Gas, Power  
Steering, Front Weights, Nice



John Deere 450 13x7 DD grain drill  
w/grass seed box, very nice



Case IH L300 Loader  
w/7' Quik-Tach Bucket and Brackets

### TRACTORS 1969 to Current

MF 253, 43hp, 1990  
Ford NH 4630 turbo, 55hp, 1997 w/loader  
Ford NH 3930, 45 hp, 1997  
Ford 4830 lo profile, 62hp, 1991  
Ford 3910 w/sickle mower, 42hp, 1984  
Ford 3600 40 hp, 1978  
Case IH 7210 MFWD, 130hp, 1995  
Case IH 265 offset w/cult, 25hp, 1987  
Agco Allis 4650, 40hp, 1993  
AC 6080, canopy, 83hp, 1984  
IH 1066, cab, 116hp, 1975  
IH 1086, rops, 131hp, 1978  
IH 766, cab, 80hp, 1976  
IH 766, cab, 80hp, 1974  
IH 656, cab, gas, 64hp, 1968  
JD 4050 hi-crop, cab, 105hp, 1983  
JD 4630 cab, 150hp, 1975  
JD 4020 side console, 95hp, 1970  
JD 4020 side console, 95hp, 1969  
JD 4020 side console, hi-crop, 1969  
JD 3020 side console, 70hp, 1969  
JD 2440, canopy, 60hp, 1980  
JD 2240 w/loader, 50hp, 1976  
JD 2040 w/loader, 40hp, 1982  
JD 820D, utility, 35hp, 1972  
Farmall 140 w/FH, cultivator, 24hp, 1979  
Farmall 140 w/L306 mower, 24hp, 1977  
Farmall 140 w/FH, 24hp, 1974  
Farmall Cub w/FH, 12hp, 1972  
Kubota 2550 4x4 w/loader, 29hp, 1987

### MANURE SPREADERS

2) IH Cub Manure Spreader  
NI 351A Spreader  
NI 3709, Sharp  
NI 3639 tandem w/tailgate & top beater  
NI 18 Ground Drive  
NI Ground Drive  
NH 667 Tank Spreader  
FNH 185 Tandem Axle w/Tailgate  
NH 190 w/Tailgate, Coming In  
Akey 90 PTO Spreader  
Hesston S-90 Small PTO Spreader  
Millcreek 125 PTO, 2 years old

### TRACTORS 1968 and Prior

Ford 640, turf tires, 30hp, 1954  
Ford 641, lots of new parts, 30hp, 1954  
Ford 660, 5 speed, live PTO, 30hp, 1956  
IH 240 utility w/FH, 30hp, 1958  
IH 706D, FH, poor cond., 72hp, 1964  
Farmall 300, FH, bad TA, 39hp, 1955  
Farmall 504 gas, w/loader, poor, 45hp, 19-  
Farmall 504 gas, WF, poor, 45hp, 1962  
Farmall C, 24hp, 1949  
Farmall Cub, new paint, 10hp, 1961  
Farmall H, stored inside, 30hp, 1947  
3) Farmall Super H, 30hp, 1954 & 1953  
2) Farmall Super A, 24hp, 1950 & 1948  
AC D12, wide front, 3pt, 28hp, 1963  
AC D15, wide front, 3pt, 40hp, 1968  
AC D17 diesel, try, 53hp, 1960  
AC WD45 diesel, wide front, 45hp, 1955  
JD 2020 gas, nice, 54hp, 1966  
JD 3020D, powershift, good, 70hp, 1964  
JD 4020D, wore plum out, 95hp, 1966  
JD 420 crawler w/blade, very nice,  
30hp, 1956  
JD 60 w/pow steer, good, 40hp, 1955  
JD 730D, wide front, 3pt, fenders,  
70hp, 1960  
JD 830, 80hp, 1959  
JD 820, pony start, 80hp, 1958  
JD A unstyled, s/n 448506  
JD AR restored, 40hp, 1951  
2) JD B, 28hp, 1948 & 1951  
JD B unstyled, on steel, 1937  
JD R, 1954  
MF 85 gas, try, 60hp, 1959  
MM Super Jetstar 3, 42hp, 1968  
Oliver 1650 gas, try, 66hp, 1965

### CULTIMULCHERS & PACKERS

Dunham 14' End Transport  
Brillion 10' Cultimulcher  
Brillion 12' Cultimulcher  
2) Brillion 13'8" Cultimulcher  
Dunham 12' Cultimulcher  
Kewanee 10' Cultimulcher  
(2) Brillion 14' End Transport  
Brillion 10' Packers  
Brillion 12' Packers  
Brillion 3', 3 1/2' & 4' Packer Pups

### HAYBINES, RAKES & BALERS

JD 338 w/40 ejector, nice  
FNH 575 w/1/4 turn, sharp  
2) NH 311 w/70 thrower, sharp  
NH 65 compact w/thrower  
NH Super 68  
MF 124 baler w/thrower  
NH 845 4-1/2x4-1/2 round baler  
Farmhand/Vermeer 4x5 round baler  
FNH 258 rake w/dolly  
FNH 256 rake  
NH 258 rake w/dolly  
5) NH 256 rake, 3 w/dolly  
JD 672 rake w/dolly  
NI 4160 rake w/dolly  
2) NI 402 rake, 1 w/dolly  
MF 3pt. rake  
Kuhn 3pt. rake/tegger  
Grimm, Pequea and Zimmerman tedders  
Old IH & David Bradley side delivery rake  
JD hay fluffer  
JD 1460 disc mower conditioner  
JD 1219 haybine  
MF 925 9' haybine

### CHISEL PLOWS

AC 5T Soil Saver (Nice)  
Brillion 9T Soil Saver  
Bush Hog 8T 3 pt.  
Chattanooga 11T 3 pt.  
Glencoe 10T 3 pt.  
IH 10T pull type  
IH 7T 3 pt.  
JD 712 7T Soil Saver (nice)  
Case IH 5500 7T 3 pt.  
Rhino 5T 3 pt. Chisel

### DISC HARROWS

Case IH 3900 21'6", New Blades  
Case IH 475 11' Rockflex  
IH 500 10' Cutting Disk  
2) White 271 18' Rockflex,  
JD 19' 220 Center Fold  
JD 1630 11' Cutting Disk  
3) JD 8' & 9' Disc  
Oliver 10' Transport Disk  
2) IH 10' Transport Disk  
3) IH 8' Transport Disk  
Miller 8' Offset  
IH 8' FH Disk  
Case 8' Wheel Disk  
Ford 12' Disk (Same as White)  
2) Ford 8' 3pt Disc  
2) IH 7' 3 pt. Disc

### PLOWS

White 508 4x18 auto reset  
IH 720 5x20 auto reset  
IH 720 5x18 auto reset, hillside  
IH 735 5x vari width  
IH 710 5x16 auto reset  
IH 710 4x16 auto reset  
IH 450 3x16 3pt auto reset  
MF 43 3x14 3 pt  
MF 2x16 3 pt rollover  
2) Oliver 2x14 3pt.  
JD 3600 5x18 pull, auto reset  
4) JD 4x pull type  
JD 3x16 pull type  
8) JD 1, 2 & 3x 3pt plows  
21) Ford, Ferguson and Dearborn 2x3pt  
4) AC 2 & 3x snap coupler plows  
JD, IH & AC disc plows  
White hillside hitch for plow

### GRAIN DRILLS

JD 8200 21x10 DD soybean drill  
Case IH 5100 21x7 DD w/Grass & Press  
MF 33 17x7 SD w/Grass & Fertilizer  
JD 450 13x7 DD w/Grass  
JD FB-B 15x7 w/Grass  
JD FB 17x7 SD w/Grass & Fert  
Oliver 13x7 DD w/Grass & Fert.  
IH 510 13x7 DD w/Grass & Fert.

### MISCELLANEOUS

3) JD 6 Wheel Gators  
Kawasaki Mule 4x4  
Howard 11' 3 pt. HD rotovator  
18.4x38 Open Center Duals  
20.8x38 Open Center Duals  
Axle Duals to Fit JD 7400  
NH L445 Skid Steer  
Wood 3 Pt Rototillers, 52" & 60"  
Woods 20' Batwing Mower  
Woods Rear Discharge 3pt Estate Mowers  
4) Woods 84 Cadet 7' Pull Type  
JD 1508 15' Wing Mower  
JD 1008 10' mower  
Woods 8' 3pt. Blade & others  
Bearcat 1101 Grinder Mixer  
Gehl 65 Grinder Mixer  
2) 2 Horse Trailer  
Brady 722 Flail Chopper  
3) 3 Pt. Backhoe Attachment  
3) Gravity Bin Wagons  
Cub & Super A snow blades  
Several loader attachments  
Several sickle bar mowers

www.wengers.com

## STRIVING TO PROVIDE TOP QUALITY USED EQUIPMENT