



JANUARY 15-21, 2001

ST. FABIAN, JANUARY 20

**A GOOD DAY FOR BOYS**

According to the old almanacs, January 20 was considered a particularly good day for the birth of boys. The eighth-century Greek poet and philosopher Hesiod, in his instructive "Works and Days," named each day as lucky or unlucky for certain events, including birthing, ship-building, and shearing sheep. A boy born on January 20 claims Capricorn as his astrological sign, with its characteristics of resiliency and big-heartedness. Numerology gives him the number 2 (2 plus 0) for imagination. Ruled by the Moon, these boys may be more influenced by their feelings than by their thoughts



*If you live to the age of a hundred, you have it made, because very few people die past the age of a hundred.*

-George Burns

**TIP OF THE WEEK**

To keep cookies moist, add a slice of fresh fruit or bread to the cookie jar.

**SNOWBALL COOKIES**

- 3/4 cup (1-1/2 sticks) unsalted butter, softened
- 1/4 cup unsifted powdered sugar
- 1/3 cup granulated sugar
- 1 teaspoon vanilla extract
- 1/3 cup yellow cornmeal
- 1-3/4 cups all-purpose flour
- 1/4 teaspoon salt
- powdered sugar, for sprinkling

Mix cornmeal, flour, and salt, and combine these with butter mixture. Shape this dough into 1-inch balls. Bake on a parchment-lined cookie sheet for 12 to 15 minutes. Dust with sifted powdered sugar while still warm, then a second time when cool.

Makes about 36 cookies.

For recipes, gardening tips, and weather forecasts, visit [www.almanac.com](http://www.almanac.com).

**United Feature Syndicate**

(Printed in the U.S.A.)

200 Madison Ave  
NYC, NY 10016  
(212-293-8500)

**Lebanon Valley Livestock**

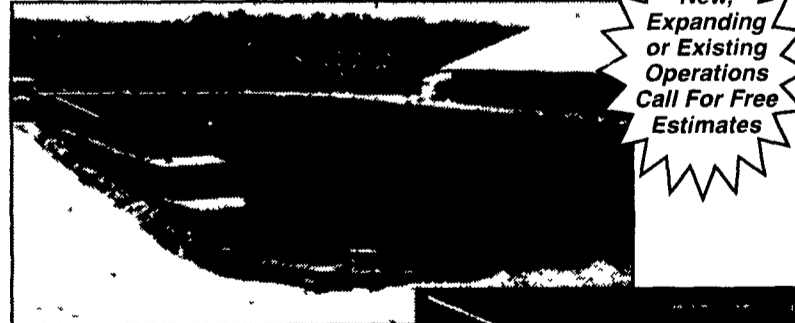
Fredericksburg, Pa.  
Report Supplied By Auction  
January 9, 2001

CATTLE 91...SUPPLIED BY THE AUCTION  
STIFERS ONE CHOICE 2-3 1220 LBS 77.00, SELECT 1-3 49.75-59.25  
HEIFERS ONE CHOICE 2-4 1080 LBS 62.25  
COWS BREAKERS 75-80% LEAN 38 75-45.25, ONE BONER 80-85% LEAN 35.00, LEAN 80-90% LEAN 30.25  
BULLS YG#2 1460-2130 LBS 53.75-

54.75.  
CALVES: 96...FARM CALVES #1 HOSLSTEIN BULLS 95-120 LBS. 147.00-160.00, #2 75-100 LBS. 40.00-80.00, ONE #1 HOLSTEIN HEIFER 95 LBS. 245.00-285.00.  
HOGS 30...BARROWS AND GILTS 49-54% LEAN 20.00-40.00, ONE 45-50% LEAN 18.00.  
SOWS: ONE US#1-3 32.00.  
BOARS: ONE 210 LBS. AT 20.00.  
FEEDER PIGS: 0. NO MARKET TEST.  
SHEEP: 0...NO MARKET TEST.  
GOATS: 0...NO MARKET TEST.  
HORSES 0... NO MARKET TEST.

**SITE EXCAVATION**

Installation of H.D.P.E. Liner Systems for: Dairy, Hog, and Veal Manure Storage Facilities, Golf Course and Recreational Ponds



New, Expanding or Existing Operations Call For Free Estimates

**FEATURES:**

- 60 mil thick H.D.P.E. Liner
- Geotextile underlayment
- Leak detection system
- Economical Manure Storage
- Seals manure in, subsurface water out
- Concrete ramp for manure agitation and pumping

**MANADA CONSTRUCTION CO.**

1942 Camp Swatara Road • Myerstown, PA 17067  
Ph; (717) 933-8853 • Fax: (717) 933-8078

**Pa. Weekly**

13 Livestock Auctions

Friday, Jan. 5

Report Supplied By PDA

CATTLE 4549...Compared with 3363 head last week and 5066 head a year ago. Sl. steers mostly steady with a moderate cattle supply.sl. heifers 1.00 to 3.00 higher, sl. cows unevenly steady, with high yield cows steady and lower yielding cows .75 to 1.00 lower, bulls steady, with fancy bulls 5.00 to 10.00 higher, Feeder cattle scarce.

STEERS: High Choice and Prime 2-4 78.00-81.00, Choice 1-3 73.75-80.00, Select and Low Choice 2-3 71.50-76.00, Select 1-3 65.00-75.00, Standard 1-2 54.00-63.00.

HOLSTEIN STEERS: High Choice and Prime 2-3 66.00-69.25, Choice 2-3 61.00-67.25, Select 1-2 53.25-63.75, Standard 1-2 45.00-56.00.

HEIFERS: Choice 2-4 70.50-80.25, Select 1-3 65.00-75.25, Standard 1-2 50.00-60.25.

COWS: Breakers 75-80% lean 40.00-48.75, Boners 80-85% lean 36.75-47.50, Lean 85-90% lean 32.50-45.00, Shells 33.00 and down.

BULLOCKS: Select 1-3 one 53.00.  
BULLS: Yield Grade 1 1000-2500 lbs 50.00-65.75, Yield Grade 2 900-2400 lbs 43.75-58.25.

FEEDER CATTLE: STEERS: Large 2 holsteins, 300-500 lbs 68.00-82.50, Medium and Large 1 500-700 lbs 65.00-80.00, Medium and Large 2 few 500-700 lbs 66.00-68.00. HEIFERS: Medium and Large 1 few 500-700 lbs 79.50, Medium and Large 2 300-500 lbs 55.00-69.00, Medium and Large 2 500-700 lbs 55.00-65.00, BULLS: Large 2 Holsteins 500-700 lbs 43.00-52.00, Medium and Large 1 300-500 lbs 75.50-89.00, Medium and Large 2 300-500 lbs 74.00-90.00, 500-700 lbs 58.00-65.00.

CALVES 2926...Compared with 2640 head last week and 3290 head a year ago. Vealers mostly steady...VEALERS: Good 140-350 lbs 75.00-97.50, Standard and Good 75-115 lbs 35.00-72.50, Utility 50-110 lbs 5.00-45.00; FARM CALVES: Holstein bull calves steady to 5.00 higher, Holstein heifers steady to 25.00 higher...No 1 Holstein bulls 90-120 lbs 115.00-156.00, No 2 80-120 lbs 50.00-130.00; No 1 Holstein heifers 80-120 lbs 210.00-325.00, No 2 80-120 lbs 90.00-295.00.

Beef type bulls and heifers 75-125 lbs 95.00-200.00.

HOGS 1058...Compared with 357 head last week and 1269 head a year ago. Barrows and gilts mostly 1.00 lower, sows steady to 2.00 higher. BARROWS AND GILTS: 49-54% lean 225-270 lbs 38.00-41.00, 45-50% lean 230-275 lbs 34.00-38.00, 40-45% lean 240-300 lbs 25.00-37.50.

SOWS: US 1-3 300-500 lbs 25.50-33.50, 500-700 lbs 28.00-36.50.

BOARS: 9.00-15.00.

FEEDER PIGS 131...Compared with 280 head last week and 142 head a year ago. US 1-3 30-50 lbs 10.00-22.00, 50-95 lbs 26.00-34.00 per head.

SHEEP 983...Compared with 900 head last week and 2043 head a year ago. Slaughter Lambs steady. LAMBS: Choice 40-80 lbs 110.00-150.00, 80-100 lbs 85.00-120.00, 100-130 lbs 68.00-100.00. SLAUGHTER SHEEP: 19.00-65.00.

ONE GRADED FEEDER PIG SALE 175...Compared with 377 last week 318 head a year ago...Feeder pigs entire supply sold for slaughter. Slaughter: 20-35 lbs 50.00-160.00, 45 lbs 50.00 per cwt.

**Middleburg Livestock Auction**

Middleburg, Pa.

Tuesday, January 9, 2001

Report Supplied By USDA

CATTLE 392...(PDA)...Compared with last week's sale...(Supply included 189 sl. steers and heifers)...steers steady, cows 1.00 lower, heifers steady to .75 lower on this supply, bulls steady to 2.00 higher.

STEERS: High Choice and Prime 2-3 1220-1475 lbs 80.50-82.00, with one 82.75, Choice 2-3 1050-1495 lbs 73.75-80.25, Select 1-3 66.00-75.00, Standard 1-2 56.00-62.75.

HOLSTEIN STEERS: few High Choice and Prime 2-3 1135-1555 lbs 67.75-68.00, Choice 2-3 1100-1665 lbs 62.50-66.75, Select 1-2 53.50-62.00, Standard 1-2 48.00-51.50.

HEIFERS: High Choice and Prime 2-4 1200 & 1395 lbs 79.75 & 80.00, Choice 2-4 1040-1420 lbs 73.00-79.00, Select 1-3 64.00-74.00, few Standard 1-2 50.00-60.00.

COWS: Breakers 75-80% lean 40.50-46.25, Boners 80-85% lean 37.00-43.00,

Lean 85-90% lean 32.00-40.50. Shells 31.00 and down.

BULLOCKS: couple Select 1-3 58.50 & 61.00.

BULLS: Yield Grade 1 1240-2140 lbs 53.25-58.00, Yield Grade 2 1485-2360 lbs 45.00-51.75.

FEEDER CATTLE: STEERS: few Medium and Large 1 510-525 lbs 80.00-85.00, Medium and Large 2 325-470 lbs 74.00-75.00, 700-725 lbs 64.00-68.00; HEIFERS: Medium and Large 2 290-395 lbs 74.00-80.00, 650-850 lbs 54.00-59.00; BULLS: Medium and Large 2 230-320 lbs 66.00-74.00.

CALVES 169...VEALERS: Standard and Good 70-105 lbs 30.00-40.00, Utility 60-75 lbs 10.00-20.00.

FARM CALVES: Holstein bulls steady with spots 2.00 higher, Holstein heifers 20.00 lower...No 1 Holstein bulls 90-125 lbs 115.00-152.00 mostly 125.00-147.00, 80-85 lbs 97.00-125.00, No 2 80-120 lbs 52.00-120.00; No 1 Holstein heifers 85-110 lbs 210.00-300.00, No 2 70-105 lbs 75.00-170.00.

Beef type bulls and heifers 95-105 lbs 170.00-195.00.

HOGS 153...Barrows and gilts unevenly steady, sows steady. BARROWS AND GILTS: 45-50% lean 225-275 lbs 35.50-38.25, 40-45% lean 285-390 lbs 34.00-40.50.

SOWS: US 1-3 300-490 lbs 27.00-34.00, 500-795 lbs 34.00-36.25, few Medium 300-310 lbs 16.00-20.50.

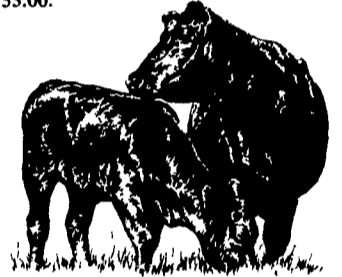
BOARS: 445-660 lbs 12.00-13.50, one 225 lbs 24.00.

FEEDER PIGS 22...US 1-3 65-85 lbs 28.00-45.00 per head.

SHEEP 6...SLAUGHTER LAMBS: few Choice 150-170 lbs 54.00-69.00.

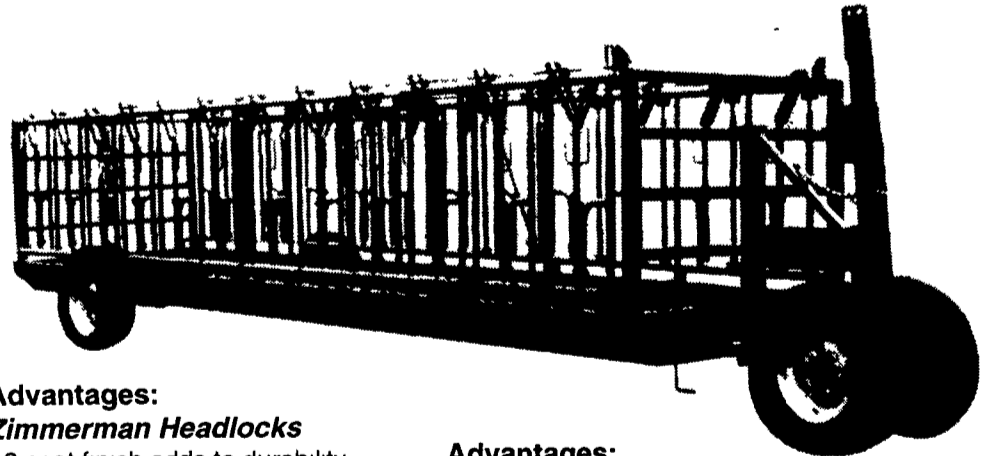
SLAUGHTER SHEEP: couple 10.00, one 38.00.

GOATS 15...(All sold by the head) One Large Billy 141.00, Medium 85.00-91.00, few Large Nannies 44.00-80.00, one Medium 29.00, Large Kids 29.00-53.00.



**Feeder Wagon with Headlocks**

Zimmerman adjustable headlocks for animals 10 months or older. Mounted on a 5' x 20' or 24' trough with an adjustable tongue. All headlocks finished with a zinc rich undercoat & TGIC polyester powder topcoat.



**Advantages:**

**Zimmerman Headlocks**

- 2 coat finish adds to durability.
- Spring loaded neck bar for easy removal & adjustment.
- Individual lock on each yoke for retaining individual animals.

**Advantages:**

**Farmco Feeder Wagon**

- 15" implement wheel (6 bolt).
- 2 jacks on front corners for added stability.



**Added Value With Our 2 Coat Process!**

- 1 Five step metal preparation, including iron phosphate conversion coating, to enhance adhesion & prevent undercoat corrosion
- 2 Zinc rich epoxy powder undercoat
- 3 TGIC polyester powder top coat, baked at 400° to fuse coats, forming a cross link molecular bond

Call or Write For Additional Information & the Name of Your Nearest Dealer

**Paul B. Zimmerman, Inc.**

295 Woodcorner Rd. • Lititz, PA 17543 • 1 mile West of Ephrata  
717/738-7365

Hours: Mon. thru Fri.: 7-5; Sat. 7-11