

Lancaster Farming *Antiques Center*

Bonson Home Is A Tribute To Historical Workmanship

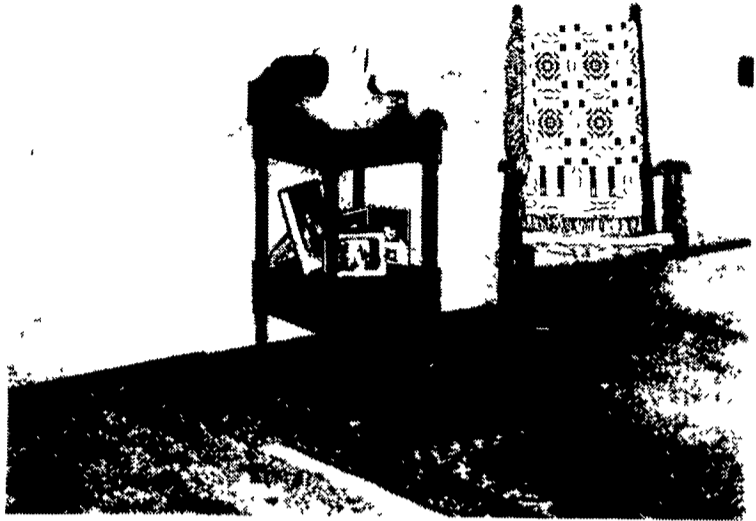
(Continued from Page B24)

back and side window.

"They might have had several fires going," Jim explains while pointing to a swinging "crane" used to position a cooking pot over a particular fire, two long narrow hanging irons with several hooks for cooking at varying heights above the fires, and an early ironwork kick toaster.

"Look at the intricate work on it. They wouldn't have had to do that. This type of fireplace killed more American housewives. Their long skirts caught fire while trying to reach the bake oven in the back. Later, they started to build the bake oven out and to the left or right of the fireplace jamb."

A narrow winding staircase leads to the second floor living room or "great hall" and kitchen. The staircase circles again to reach the bedroom and again to



One full wall each in the living room and bedroom of the Bonson home has raised panel partitions and doors with H-L hinges. The Bonsons keep this Sheraton-era washstand and early rocker in the bedroom.

(Turn to Page B26)

PUBLIC SALE OF ANTIQUES-HOUSEHOLD GOODS, WINROSS, HESS & ERTL MODEL CARS & BANKS DALE EARNHARDT ARTICLES RACING ARTICLES SAT., JAN. 13, 2001 AT 10:00 A.M.

Sale to be held at Al Starr Firemen's Building, Village of Willow Street, Lancaster Co., PA (South of Lancaster, along Rt. 272, behind firehall)

Food Served

Sale by

Mr. & Mrs. Stanley H. Devonshire

Howard E. Shaub, Inc.
(717) 464-3541
Auctioneer (AU-000831-L)
Robert Enterline (AU-003690)

"Horst Auction Center" PUBLIC SALE ANTIQUES, HOUSEHOLD GOODS, COLLECTIBLES TOYS & TOOLS WED., JAN. 10, 2001 AT 2:00 P.M.

Sale to be held at the Horst Auction Center, located at the corner of Rt. 322 & Durlach Rd. (approx. 2 1/2 miles west of Ephrata), Ephrata, Lancaster County, PA.

FURNITURE: Grained Blanket Chest; Rope Bed; Child's Washstand; Child's Wicker Rocker; Victorian Slipper Chair; Eastlake Love Seat; Bench; Oak - Sq. Ext. Table (w/Boards); Empire China Closet; Empire Sideboard (w/Claw Feet); T-Back Chairs; Library Table; Dresser; Cane Rocker; Mahogany - High Chest Of Drawers; Gov. Winthrop Desk; Spool Bed; 10 Pc. Depression Dining Room Suite; Waterfall Dresser; Maple Dinette Set; Cedar Chest; 3 Pc. White Bedroom Set; 5 Pc. Mod Pine Bedroom Suite; Mod Oak - Dining Room Set; Entertainment Cabinets; Chest of Drawers; Fine 2 Pc. Living Room Suite; La-Z-Boy; Platform Rocker; Butcher Block Table; Box Springs & Mattresses; Sofa Table;

APPLIANCES: Microwave; Color TV's; Component Stereo; Cookware; Set Of Silverware; Lamps; Gateway Computer (w/Color Printer); Encore Treadmill; Oak Gingerbread Clock; Antique Clocks; Refrigerator Clock; Opalescent Light; Agaware; Brass Buckets; Powder Flask; Iron Bulldog; Pewter Plates; Dovetailed Wall Box; Duck Decoys; Miners Light; Antique Tin Lantern; RR Lanterns.

CHINA & GLASSWARE: Adams Cups & Saucers; Washington Vase; Austrian; R.S. German; Japanese Tea Set; Nippon; Stoneware Pitcher & Bowl; Sponge Pitcher; Windmill Pitcher; Yellowware; Demuth Snuff Jar; John Bell Jug; Stoneware; Lg. Collection Of Hens On Nests; Bohemian Glass; Pressed & Pattern Glass; Cakestand; Glass Basket; Refrigerator Dishes; Fostoria Glass; Heisey Glass.

LINENS: Quilts; Crocheted Bedspread; Tapestry; Braided Room Rug; Album Of Postcards & Adv. Cards; Harper's Hist. Book; Comic Books; Lg. Folk Art Print; Paintings; Print "Ready For The Hunt"; Baskets.

TOYS: Tin Windup Toys; Lionel Peter Rabbit Hand Car; Lead Soldiers, Cowboys & Indians; Composition Soldiers; Candy Mold; Rolly Polly; Howdy Doodly Iron Banks; Horse Pull Toy; Early Child's Phonographs; Schoenhut Elephant; Mickey & Minnie; Rocking Horse; Earth Mover.

TOOLS: Riding Mower (10 H.P.); Snowblower (w/Tracks); Egg Basket; Ladders Hand Tools; Digging Iron; Primitive Table; Pump Trough; Iron Gate; & Many Other Items To Be Sold!

No out of state checks without prior approval.

HORST AUCTS.
T. Glenn
Timothy G.
Thomas A.
AU438L
(717) 738-3080
Fax # (717) 738-2132
"VOICES OF EXPERIENCE"

KEN REED AUCTION GALLERY

65 East Bridge Street, Corner of Bridge & Main Streets in Downtown Spring City, PA 19475
(E-Z Access of PA Rt. 422 Expressway or take Bridge Street off PA Rt. 724)

JANUARY 11th, 2001 - 3 PM

Contents of Philadelphia "Wyndmoor" PA Home and Others

Bicycles, Early Tin Ware, Linens, Victorian Furniture, China, Doils, Pottery, Glassware, Tools

These are examples of the many interesting items in our next gallery sale. Call or check our web site kenreedauction.com for full listing.



Mahogany Tier Table



Round Oak Tables



Steamer Trunk



Oak Pedestal



Dressing Room Seat



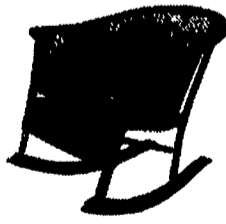
Needlepoint Covered Victorian Sofa



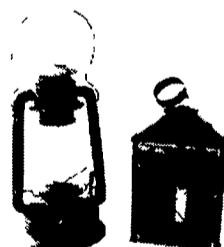
Velour Upholstered Love Seat



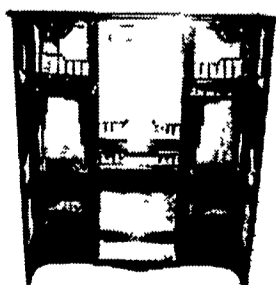
Carved Oak Chair w/Lions Head



Wicker Rocker



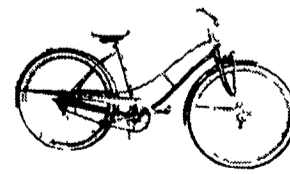
Examples of Early Tin Ware



Mirror Back Victorian Curio



JC Higgins



Sears



Flexible Flyer 2 Man Sled

PREVIEW DAY BEFORE 9:00 AM - 1:00 PM
10% BUYERS PREMIUM

TERMS: CASH, CERTIFIED CHECK W/ID - VISA/MC
NO OUT OF STATE CHECKS
Sale Conducted By:

KEN REED AUCTIONER

PA #AU-001658-L

610-948-4871 Phone
Kenreedauction.com Website

610-948-0165 Fax
kenreedauction@aol.com Email