

## Agribusiness At The Farm Show

HARRISBURG (Dauphin Co.) - In what Farm Show officials are calling "a first for the industry," a special new farm equipment display will be featured at the 2,001 Pennsylvania Farm Show. This display sponsored by all the major farm equipment manufacturers will be staged in the center of the main exhibit hall in the farm show complex with members of several FFA chapters on hand each day to give presentations about each piece of equipment.

"I am pleased to announce that all of the major farm equipment manufacturers will be represented at the 2001 Pennsylvania Farm Show," said Dennis Grumbine,

executive director. "The Farm Show represents the best of Pennsylvania Agriculture, and serves as a true showcase of the state's largest industry as well as a place for farmers to purchase their agriculture needs. In addition, the general public gets to experience agriculture hands on."

In addition to regular exhibit space, the new special farm equipment display will feature farm machinery that is used for soil preparation, planting and seeding, grain harvesting, silage harvesting, tractors, and material handling.

FFA members will be on hand at the display to give

presentations about the equipment and help sales representatives answer questions about the featured equipment. The participating FFA chapters are: West Snyder FFA, Newport FFA, Manheim Central FFA, Upper Dauphin FFA, Mifflinburg FFA,

McConnellsburg FFA, Solanco FFA, Dover Area FFA, Greenwood FFA, Middleburg FFA, and Cumberland Valley FFA. Presentations will begin at 9 a.m. and 1 p.m. each day.

The machinery dealers who are participating in this special event are Binkley & Hurst Brothers Inc., Hooper Inc., M. M. Weaver & Sons, Triple H Farms, Valley Ag & Turf, and Wenger's of Myerstown.

The Pennsylvania Farm Show will be held from January 6 to 11, 2001, with one of the largest indoor agricultural events in America. The Farm Show complex has 16 acres under roof, and more than \$300,000 in premiums will be offered this year to competitive exhibits in all types of farm livestock, youth, commodity and horticulture exhibits. More than 500,000 people usually attend the five-day annual event.



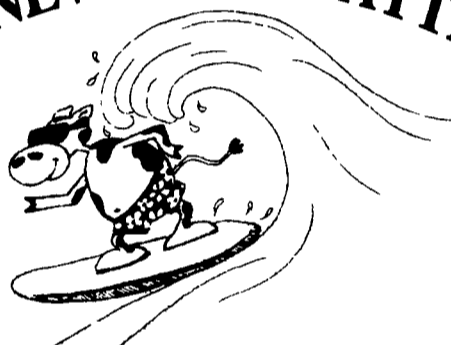
**Goodville Mutual**  
New Holland, Pa

Call 800-448-4622  
for an agent near you

**affordable insurance**

for home, vehicle,  
small business, farm

## THE NEW WAVE PATTERN



### Grooved Rubber Matting

Grooved In A Wave Pattern Creating A Non Slip Area, For Cow Runners and Horse Barns. Up to 6 Feet Wide and Any Length. Nothing Else On Market Like It

**610/286-0168, 610/286-0706**

## ATTENTION FARM OWNERS

ARE YOU PAYING TOO MUCH FOR FARM INSURANCE?



Find out by calling

**1-877-209-5428**

*We know farming. Farm Family was founded to serve the unique insurance needs of farmers and the agribusiness community. Many of our agents and employees have agricultural backgrounds which helps us understand the daily challenges of farming. Our business is protecting your business from the pitfalls associated with farming.*

Call Farm Family today for a free quote



C. Michael Canby, agent  
Claetus M. Canby, agent  
Rt. 3 Box 186A  
Martinsburg, WV 25401

Property/casualty insurance products offered by United Farm Family Insurance Company, Glenmont, NY, in MD and PA, and Farm Family Casualty Insurance Company, Glenmont, NY, in CT, DE, MA, ME, NH, NJ, NY, RI, VT, and WV.

## One Animal You Don't Want on Your Farm



When the weather gets cold, rodents are looking for a way to get inside. Once in, they can damage your facility, contaminate harvests and infest livestock with disease.

The 911 of Pest Control can help. Our Rodent Control Program gets to the root of the problem quickly and effectively. Ehrlich has been helping Lancaster County residents with their pest problems since 1928, and we specialize in agricultural programs.

**Call us for a complimentary inspection and estimate.**

## Ehrlich

### The 911 of Pest Control.

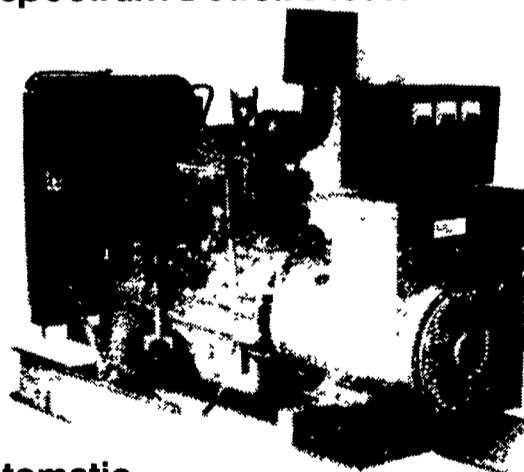
1107 Enterprise Road, East Petersburg 17520

**717-560-3427**

**Show this ad for \$25 off your rodent control service.**

## Agricultural Generators

Spectrum Detroit Diesel



Automatic  
L.P. Gas, Diesel,  
Natural Gas Generators  
5 to 2,000 KW



P.T.O.  
Generators  
25 to 135 KW Units  
In Stock!

**Service - Rental - New & Used Units In Stock**



**PENN POWER SYSTEMS**  
Power Generation Systems Specialists

330 Fonderwhite Road, Lebanon, PA 17042

Call Leonard Martin

**717-273-4544**

Fax 717-273-5186