

1A CONSTRUCTION EQUIPMENT



WENGER'S OF MYERSTOWN

CONSTRUCTION EQUIPMENT & PARTS

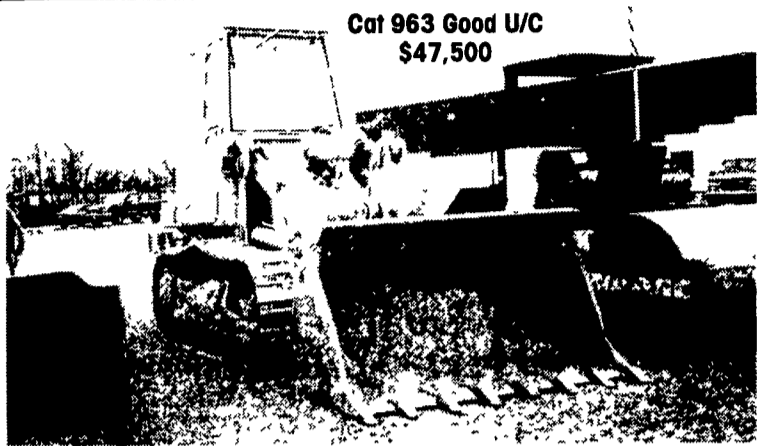
800-552-5080 • Nights 717-272-9583

Rt. 501 South Myerstown, PA 17067

HOURS: Mon-Fri • 7:30-5:00 Saturday • 7:30-Noon

www.wengers.com

kbaum@wengers.com



Cat 963 Good U/C
\$47,500

Komatsu WA-120-1

Cab \$48,500

Samsung SL 120-2B

1100Hrs. \$59,500



JD 750B Dozer, Straight Blade w/Tilt,
Rebuilt Hydros..... \$27,500



91 Bobcat 943 Skid Loader, Grapple
Bucket, Tracks, Foam Filled Tires. \$11,500
94 Bobcat 953 \$12,500
773 Bobcat, Good. \$11,500



Cat E120B & 110B Excavators,
% 4 To Choose From \$22,500 to \$24,500



Cat 943 Crawler Loader, EROPS,
Good UC, Recent Eng Rebuild \$37,500

WHEEL LOADERS

(2) (1) 96 Fiat Allis, FR120, Cab,
Low Hours..... \$32,000

Cat 966D, Good Rubber, Rebuilt
Trans., 4 Yard Bucket..... \$59,500



Hitachi EX200-3, Low Hours \$46,000
90 Cat EL200B, \$29,000
Good Condition



JD 670 Graders, 12' Blade
1 w/Snow Wing \$19,000 & \$25,000

96 Case 580 Super L Backhoe, 4x4, Cab, Ext. Hoe..... \$29,500

Cat 988A Rubber Tire Wheel Loader, Good Runner..... Call

(2) Cat 977L Crawler Loaders, EROPS..... \$16,000 & \$19,000

JD 710B Backhoe, OROPS, Plumbed for Hammer..... \$12,000

JD 450G Dozer, 6 Way Blade..... \$25,000

Stone Wolfpack 2500 double drum asphalt roller..... \$3,500

86 JD 450E Dozer, 6-Way, Good UC, ROPS..... \$20,000

Marklift 30' Man Lift, 4x4, Mechanics Special..... \$6,500

Weaver's Equipment Sales
RD#1, Box 418, Milton, Pa. 17847
Phone: 570-523-9598

BUYING & SELLING USED CONSTRUCTION EQUIPMENT, NEW & USED PARTS & ATTACHMENTS

CALL

H.E.L.P., INC.

(717) 469-0039

(717) 469-7679 FAX

Specializing In Caterpillar Parts also available for Case, Fiat, IHC, Komatsu, Deere, Etc.

ALL PARTS AT DISCOUNT PRICES!

****PARTS LOCATING SERVICES****

Call Us For Your Parts & Service Manual Needs

HEAVY EQUIPMENT LOADER PARTS, INC.

10070 Allentown Blvd. Grantville, PA 17028

Winter Fix Up Machines

Buy AS-IS Where is You SAVE!

- JD 301 RT Forklift Side Shift, (Smokes).....\$3,950
- MF 50B Loader Backhoe 4 in 1 Bkt., (General).....\$5,400
- Ford 3400LL Loader Tractor, (General).....\$3,500
- IHC 250A Loader Backhoe, (Batteries).....\$5,400
- J.D. 2010 Crawler Dozer, V.G. Cond., (Skips).....\$4,000
- (2) OMC 330 Skid Steers.....Both \$1,700
- Pavement Breaker GM Diesel (Runs Great) \$1,375
- Big Oliver Cletrac Loader, Exc. U/C (Parts).....\$1,000 or B.O.
- Case 430LL w/Mid Hyd Grader Blade (Smokes).....\$2,650
- J.D. 400 Loader Backhoe.....\$3,500
- J.D. 440 Crawler w/Blade, 2 Cyl. G.M., (Clutch).....\$3,500

Call Fred @



GOODRICH TRACTOR PARTS

Rt. 38 & 38B Newark Valley, N.Y. 607-642-3293

- #7491 Case 1840 Unloader, 1998, Aux. Hyd., Drt. Bkt., 1212 Hrs.....\$14,500
- #7365 Case 1840 Unloader, 1991, Aux. Hyd., Drt. Bkt., 3000 Hrs.....\$10,900
- #7513 Case 580C Loader Backhoe, 1980, 2WD, Can, Std., 4000 Hrs.....\$10,900
- #7496 Case 580SE Loader Backhoe, 1986, 2WD, Can, Ex.....\$15,900
- #7517 Case 580K Loader Backhoe, 1987, 2WD, Can, Ex., 4661 Hrs.....\$16,900
- #7516 Case 580K Loader Backhoe, 1989, 2WD, Cab, Ex., 5917 Hrs.....\$19,900
- #7456 Case 580SL Loader Backhoe. 1998, 4WD, Cab, Ex., A/C, 1985 Hrs.....\$44,900
- #7518 Case 580SL Loader Backhoe, 1996, 4WD, Cab, Ex., 3478 Hrs.....\$37,900
- #7521 Case 580SL Loader Backhoe, 1996, 4WD, Cab, Ex., Stereo, 3775 Hrs.....\$35,900
- #7420 Case 580K Loader Backhoe, 1988, 4WD, Cab, Ext. Hoe, 2780 Hrs.....\$23,900
- #7404 Case 580D Loader Backhoe, 1982, 2WD, Ext. Hoe, Hammer Hyd., 7400 Hrs.....\$11,900
- #7393 Case 850C Crawler Loader, 1983, New UC, Rebuilt Bucket.....\$20,900
- #7392 Case 580 SE Loader Backhoe, 1987, 4WD, Cab, Standard.....\$18,500
- #7389 Int'l 270 Loader Backhoe, 1980, 2WD Cab Standard, 4,000 Hrs.....\$8,500
- #7364 Case 95XT Unloader, 1997, Cab w/Heat, Hyd. Coupler, 82" Bucket, 1550 Hrs.....\$27,900
- #7362 JD 410 Loader Backhoe, 1978, 2WD, Canopy, Standard, 3100 Hrs.....\$12,900
- #7366 JD 310 Loader Backhoe, 2WD, Canopy, 14' Hoe, Excellent Cond., 2840 Hrs.....\$10,900
- #7269 Case 680K Loader Backhoe, 1987, 2WD, Cab, Ext. Hoe, 5900 Hrs.....\$15,900
- #7265 Case 580K Loader Backhoe, 1990, 4WD, Canopy, Ext. Hoe, 4900 Hrs.....\$22,500
- #7078 Case 450 Crawler Dozer, u/c Good, 5,000 Hrs.....\$14,500
- #7015 Case 570XLT Loader, 1995, 4WD, Cab, 3 pt., 2,500 Hrs.....\$25,000
- #6814 Vibromax 252 Roller, Dual Drum.....\$12,000
- #6678 Case 1840 Unloader, 1994, Aux. Hyd Drt Bkt., 1,718 Hrs.....\$11,900
- #6796 Case 1840 Unloader, 1996, Aux Hyd Drt Bkt., 2,660 Hrs.....\$12,900
- #5182 Case 1845C Unloader, 1989, Aux Hyd., UT Bkt., 2,500 Hrs.....\$12,500

Vernon E. Stup Co.

5859 Urbana Pike, Frederick, MD 21701

301-663-3185

SILOS AND UNLOADERS

MARTIN'S SILO REPAIR

Moving Concrete Stave Silos

- Gunite Relining
- Roofs
- Fill Pipes
- Replacement Doors
- Distributors
- General Repair

907 Centerville Rd.
New Holland, PA 17557
(717) 445-9834



477 East Farmersville Rd.
New Holland, PA 17557
(717) 355-2361



Bunker Silos



Precast T-Wall Concrete Bunker Silos or Commodity Buildings built to suit your needs. Bunkers available in 8 Ft. or 12 Ft. High

ADAM'S SUPPLY

BROWNSTOWN, PA

Kelly Ryan Center Line Baggers

Versa Baggers

Silage Bags

Bale Wrap

Bale Tubes

Flex Tubes

Trench Covers



717-656-6508



ALL PLASTIC CONVEYORS AVAILABLE

Good for Under Silo Unloaders Or Any Wet Place, In 18", 24" and 30" Also Available The Standard Wooden Conveyor And Feeder Dealer Inquiries Welcome

We Ship Parts **717-336-2244**

In Business Since 1965

RISSLER CONVEYORS, STEVENS, PA

Zimmerman's Harvestore® Repair

Oakland Mills, PA

717-463-9731

Specializing

Used Harvestores® & New Slurry Tanks



We Service What We Sell



Power Sweep Unloaders



Daily

- * Rebuilt Harvestore® unloaders in inventory
- * Rissler-Spiro Mixers
- * LSC stationary corn silage processors
- * AFS Hammermills and Augers

Used Harvestores Used Slurrytanks

- (3) - 25x90
- (2) - 25x80
- (2) - 25x60
- (1) - 20x60
- (1) - 20x40
- (1) - 441 A O Smith
- (1) - 81x25
- (1) - 42x25
- (1) - 62x25
- (1) - 5 Ft Extension
- (4) - A O Smith Bunk Feeders

TELMARK Leasing Available
www.telmark.com

Not Affiliated With A O Smith Harvestore®