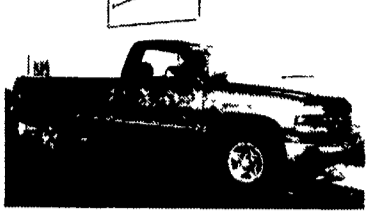


Anthony L.

# LANDIS

AUTO SALES

3394 Division Hwy., New Holland, PA 17557 (717) 355-0644  
Rt 322, 1-1/2 mi west of Blue Ball



**2000 CHEVY SILVERADO**  
LS, 4x4, V8, AT, PS, PB, A/C, Tilt, Cruise, CD, PW, PDL, 15,000Mi  
**\$19,800**



**92 FORD F-250 XLT**  
4x4, 7.3 Diesel, AT, 140K  
**\$8,995**



**98 FORD WINDSTAR**  
V6, AT, PW, PL, PS, A/C, Few Minor Scrapes & Dings, 64,000 Mi  
**\$7,900**



**97 CUTLASS SUPREME**  
V6, AT, A/C, PN, PDL, 66,000 Mi, Black  
**\$7,900**

## East Coast Trailers

Honesdale, PA • 570-729-8870



25' 20,000 lb. gooseneck.....\$5,300  
23' 14,000 lb. gooseneck.....\$3,595  
Other Models & Sizes in Stock



**1990 Volvo Vacuum Truck, New 2500 Gal. Tank, Massport Liquid Cooled Pump, Cummins L-10 270 HP, Allison Auto, Air Ride Susp., Nice Unit.....\$39,500**

Curry Supply Co., Curryville, PA  
1-800-345-2829

Large Stock Inventory of

- ❖ Tire Chains
- ❖ Snow Plows
- ❖ Spreaders
- ❖ Repair Parts

## E.M. KUTZ, INC.

READING, PA  
WHITEHALL, PA

**800-974-9779**

CALL TODAY!!!

*Get* **THE RIGHT CHOICE**  
HIGH PERFORMANCE TRAILERS THAT WORK AS HARD AS YOU DO

## STEEL DROP DECK TRAILERS IN STOCK



(3) 53'x102" (1) 48'x102"

5' Beavertail & Flip-up Ramps. Ramps make the Beavertail flat for more loading area.

SAVE UP TO \$1,000 ON SELECT TRAILERS  
Until Jan. 15, 2001

See Us At The Keystone Farm Show  
January 9, 10, 11

## SNOOK'S EQUIPMENT

"We're Here to Serve You"

RD 3, Box 130, Mifflinburg, PA 17844  
570-966-2736 Ask for Ernie or Dean

## LEFEVER BROS. CHEVROLET GEO.

YOUR DIRECT LINE TO GENUINE GM PARTS

**(800) 533-3837**

When you call the number listed above, you'll reach our wholesale parts specialists, who can help you keep your GM repair work moving quickly.

Ask about:

- Specializing in GM Medium Duty Trucks, Current and Obsolete.
- \$500,000 Parts Inventory.
- Parts Locator for Those Hard to Find Items.
- We Ship Anywhere, Local Delivery Available.
- Experienced, Knowledgeable Personnel.

Mon, Tues, Thurs, Fri  
7:30 a.m. - 4:30 p.m.  
Weds 7:30 a.m. - 8:30 p.m.  
Major Credit Cards Accepted

**(717) 432-9697**

Quality Dealer Since 1921  
406 U.S. Rt 15 Dillsburg, PA 17019



Nothing's better than an original.



# KELLER BROS.

(Buffalo Springs) Lebanon, PA

717-949-2000 or 1-800-363-2767

LEBANON COUNTY'S HEAVY DUTY TRUCK HQTRS.

Over 100 Clean Pre-Owned Vehicles  
In Stock At All Times!!

**1995 FORD F350**  
4x2 DIESEL  
5-Speed, A/C, C/T



**1999 FORD F150**  
SUPERCAB 4x4  
XLT, Only 19,000 Miles,  
Full Power, 1-Owner,  
Local Trade



**2001 FORD F150**  
SUPER CREW  
XLT 4x4  
One Owner, Low Miles  
SAVE \$\$



**94 FORD**  
E150 CLUB  
WAGON  
1-Owner - Very Clean,  
Dual Air



**2000 FORD F650**  
SUPERCAB  
Cab & Chassis, Cat  
Diesel, 6-Spd., A/C, Air  
Brakes - List \$47,194  
Sale \$37,900



**2000 & 2001 NEW FORD**  
SUPER DUTY 7.3 POWER  
STROKE DIESELS

Over 10 In Stock, Crew Cabs &  
Super Cabs, 4WD & 2WD  
SAVE UP TO \$5,000

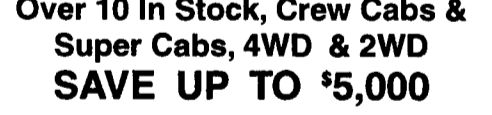
**2000 FORD F350**  
CREW CAB DUALY  
4x4, XLT, 7.3 Power  
Stroke Diesel,  
Only 8,000 Miles,  
Best of Everything



**1995 GMC**  
SUBURBAN SLE  
4x4, V8, AT, A/C, PW,  
PL, 8 Pass, Tow Pkg.  
SPECIAL \$14,500



**1994 FORD F150**  
SUPER CAB  
Flare Side, 4x4, XLT,  
AT, A/C, Leather  
Captain Chairs



**1994 FORD**  
RANGER  
SUPER CAB  
XLT, V6, A/C,  
5-Spd., Alloy Wheels



**1998 FORD RANGER**  
SUPER CAB  
XLT, 4x4, V6, 5 Spd.,  
Alloy Wheels, Tarp,  
One Owner



**2000 TOYOTA**  
RAV 4  
4x4, 5-Spd., A/C, Alloy  
Wheels, AM/FM/Cass.,  
1-Owner, Low Miles



**1996 FORD F250**  
SUPERCAB 4X4  
AT, XLT, 460 Gas,  
Loaded with  
All Options, Tan



**1999 FORD F250**  
SUPER CAB 4x4  
Lariat, 7.3 Turbo Diesel,  
AT, A/C, Matching Cap,  
Leather, One Owner,  
Black



**1999 FORD**  
EXPEDITION XLT  
V8, AT, A/C, PW, PL,  
3rd Seat, One Owner,  
Only 15,000 Miles



**1997 CHEV.**  
TAHOE LS 2 DR.  
4x4, V8, AT, A/C,  
Full Power, 1-Owner,  
Very Clean



**1997 FORD F250**  
SUPERCAB 4x4  
Diesel, AT, XLT Trim



**KELLER BROS. FORD HAS SERVED  
CENTRAL PENNA. AREA  
FOR MORE THAN 78 YEARS.**