

BIRCHWOOD AUTO SALES

717/866-5000

- 1998 FORD F-150 XLT, 2WD, 4.2 V6, AT, AC, PW, PL, PM, Tilt, Cruise, Cass, Alloys, Sharp Truck! Black, 39,900 Miles.....\$13,900
- 1996 DODGE RAM 2500 SLT, Excab, 4x4, Cummins! At, AC, PW, PL, PM, PSeat Tilt, CC, CD, Alloys, Green, 85,000 Miles.....\$19,900
- 1996 FORD RANGER XLT, X Cab, 2WD, 2.3, 4 Cyl, 5 Spd, AC, Cass, Alloys, Black, 57,000 Miles.....\$7,900
- 1996 FORD RANGER XL, 2WD, 2.3 LT, 5 Spd., AC, AM FM, White, 65,000 Miles.....\$5,900
- 1995 FORD F-350 XLT, Dually, Crew Cab, 2WD, Power Stroke! AT, AC, PW, PL, Tilt, CC, Cass, Keyless, One Owner, Green/White, 167,000 Miles.....\$15,900
- 1995 FORD F-250 XL, 2WD, 302 V8, AT, Dual Tanks, White, 9,000 Miles.....\$9,900
- 1995 NISSAN XE, Excab, 2WD, 3.0 V6, 5 spd, AC, PW, Mirrors, Tilt, Cruise, Cass, Alloys, Black, 78,000 Miles.....\$7,800
- 1994 GMC SIERRA 1500 SL, Ex. Cab, 2WD, 4.3 V6, AT, AC, AM FM, Tilt, Cruise, Blue, 72,000 Miles.....\$8,900
- 1994 CHEVROLET 1500 SILVERADO, Excab, 4x4, 350 V8, 5 spd, AC, PW, PL, Tilt, CC, Cass, Alloys, Blue, Local Truck, 117,000 Miles.....\$10,900
- 1993 FORD F-150 XLT, Excab, 2WD, 302 V8, AT, AC, PW, PL, PM, CC, Tilt, Cass, Alloys, Red/Gray, One Owner, 25,000 Miles.....\$13,500
- 1991 CHEVROLET 1500 SILVERADO, 2WD, 350 V8, AT, AC, PW, PL, Tilt, Cruise, Cass, Alloys, Topper, Blue/White, 67,000 Miles.....\$8,900
- 1990 FORD RANGER XLT, Ext. Cab, 4x4, 2.9 V6, 5 Spd., AC, Cass, Alloys, Red.....\$4,900
- 1990 FORD AEROSTAR, Cargo Van, 3.0 V6, AT, AM/FM, White, 50,000 Miles.....\$3,900
- 1988 CHEVROLET 2500 SCOTTSDALE, Ex Cab, 4x4, 4 Spd., AC, PW, PL, Tilt, Cruise, Cass, Red/White, One Owner, 107,000 Miles.....\$7,900

CALL FOR INFORMATION ON OUR COMPLETE LINE OF CARS AND SUVs WE ALSO BUY CLEAN USED TRUCKS, OLD OR NEW, GAS OR DIESEL



MECHANICS TRUCK

'94 F800, 210 HP, 5+2 trans, AC, 14' IMT heavy duty mechanics body, 14,000# hyd, IMT crane, hyd outriggers, hyd 35 CMF air compressor, Miller 251 diesel welder. Truck, body & equipment all in excellent condition. Replacement cost \$98,000.

- \$49,000 OBO -
973-347-1101 ask for Jim

'91 Chevy Silverado 1500 4x4 Suburban, 350, auto, PS, PB, PW, PDL, cruise, tilt, air, 8 pass., towing package, 2 tone blue, 92,000 miles, excellent condition, \$9,950. 717-733-2873

'95 GMC SL 1500 4x4, 4.3, 5 spd, PS, PB, AM-FM, 6,100 GVW, 44,000 miles, teal, \$10,500. 717-733-2873

'99 Dodge 2500, 8 pass., 318 auto, PS, PB, PW, PDL, cruise, tilt, dual air, AM/FM Cass., 19,000 miles w/bal. of factory warranty, \$17,900. 717-733-2873

Load Boss Trailers Quality Built



Fall Special
6x10
10,000 GVW
\$3,200

814-623-8696

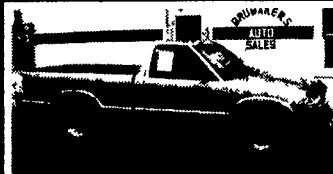
Picked up at our factory. Every trailer built for your needs.

BRUBAKER'S AUTO SALES

PH. 717-866-6237

Hours: Mon.-Fri, 8 a.m. - 6 p.m.; Sat. 8 a.m. - 6 p.m.

ROUTE 422 MYERSTOWN, PA



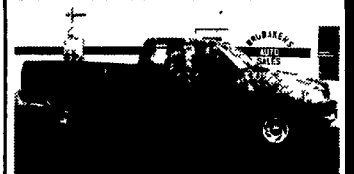
99 CHEVY S-10, 2WD, Gray, 4 Cyl., 5 Spd., AM/FM/ST, 21,008 Mi. \$9,800



99 FORD WINDSTAR LX, Green, 3.8 V6, AT, AM/FM/CAS, PW, PL, CC, Tilt, Dual AC, Keyless Entry, 56,855 Mi. \$13,900



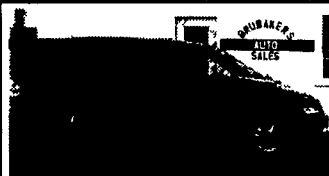
98 JEEP GRAND CHEROKEE LIMITED 4X4, Gold, V8, AT, AC, PW, PL, CC, Pwr Seats, Pwr Sunroof, Leather, AM/FM/CAS/CD, Keyless, 59,355 Mi. \$16,900



98 FORD F-150 XL 4X4, Ext Cab Green, 4.6 V8, AT, AM/FM/ST AC, 50,560 Mi. \$15,900



97 PONTIAC TRANS SPORT MONTANA White, V6, AT, AM/FM/CAS, PW, PL, CC, Tilt, Dual AC, Keyless Entry, Pwr Sliding Door, 47,645 Mi. \$13,900



96 DODGE GRAND CARAVAN SE, Maroon, 3.3 V6, AT, AM/FM/CAS, PW, PL, CC, Tilt, Dual AC, Quad Seats, 71,697 Mi. \$8,900



94 CHEVY 3500 CHEYENNE 4X4, White, 454 V8, AT, AM/FM/ST, 9200 GVW, 72,765 Mi. \$12,900



92 GMC 1500 SIERRA SLE 4X4, Maroon/Gray 350 V8, AT, AM/FM/CAS AC, PW, PL, CC Tilt 75,435 Mi. \$10,900

JONES QUALITY PRE-OWNED BEST BUYS!

PONTIAC • HONDA • GMC TRUCK • ACURA • USED CAR CENTER
1335 Manheim Pike • Lancaster, PA
717 394-0711
QUALITY PRE-OWNED BEST BUYS!

Prices based on straight sale. Tax and tags extra. Trades accepted at actual cash value. Must present this ad at time of purchase for sale price.

'98 CHEV C3500 CREW CAB
454, Silverado, Dually, Auto, Air, 50K #9648 Was \$23,800
SALE \$20,400

'96 GMC K1500 X-CAB 4x4
Auto, SLT, V8 #9633 Was \$19,500
SALE \$17,400

'98 GMC K25 XCAB 4X4
SLE, 350, 8' Bed, Auto, Air, 8600 GVW #9652 Was \$22,750
SALE \$19,100

Duramax Diesel
'01 GMC K3500 DURAMAX DIESEL
4x4, Allison Auto, SLE, Air Loaded #29500 **\$36,978**

'95 CHEV K25 XCAB 4x4
Auto, Silverado, Air, 8600GVW, 8' Bed, 50K Miles #9638, Was \$20,500
SALE \$18,000

'98 GMC K15 XCAB
4x4, 3 Dr., SLE, 350, Auto, Air, #9629, Was \$23,800
SALE \$20,415

'92 CHEV C1500 EZ DUMP
Auto, Air, V8 #9634, Was \$10,400
SALE \$7,700

'01 GMC 1/2 YUKON XL 4X4 8100 V8, Auto, SLE, Trailer Package & Much More #28492 List \$42,996
SALE \$40,755

'99 GMC K15 XCAB 4X4
SLE, 5300 V8, Auto, Air #9649 Was \$23,000
SALE \$19,900

'96 GMC K15 4x4
5 Spd, V8, Air #9583, Was \$13,800
SALE \$10,300

NEW GMC 3500 SIERRA
AT, AC, 350, Dark Blue, Much More #26669 List \$23,229
SALE \$18,999 w/GM Rebate

'98 FORD RANGER XCAB
XLT, Auto, Air, V6, 30K Miles #9569, Was \$14,000
SALE \$11,800

'00 GMC 15 PASS. SAVANA VAN
Auto, Frt & Rear Air & Heat, Much More, #29880 List \$29,880
SALE \$25,500 w/GM REBATE

'96 CHEV TAHOE 4DR 4x4
Auto, 350, LS, 48K Miles #9643, Was \$20,770
SALE \$18,000

'98 GMC K15 XCAB 4x4
3 Dr, Auto, 350, Air, SLE, 36K Miles #9599 Was \$22,700
SALE \$20,775

'98 CHEV K15 XCAB 4X4
Auto, Air, V8, Silverado, #9594, Was \$20,884
SALE \$18,900

'97 GMC K25 CREW CAB 4X4 DIESEL
#9628 Was \$23,000
SALE \$19,877

'95 CHEV SUBURBAN
4x4 350, Auto, Air, LS, 60K Miles #9520, Was \$20,700
SALE \$17,880

'99 GMC JIMMY 4x4
SLE, Auto, Air, 20K, Miles #9607 Was \$22,000
SALE \$19,900

'94 CHRYSLER TOWN & COUNTRY
AWD Auto, Air, V6, Quad Seating Dark Cherry #9647 Was \$10,900 **SALE \$7,850**