

Virginia Livestock Auctions

Richmond, Va.
December 18, 2000
Report Supplied By USDA
Northern Virginia Livestock Summary
Marshall, Rockingham, Shenandoah, Staunton Union and Winchester for Dec 11-16, 2000
Feeder Cattle 1815 head
Steers Med and Lge 1 Small 1 Med and Lge 2 200-300 130.50 - 300-400 99.50-120.00 - 77.00- 87.50 400-500 88.00-109.00 85.00 81.00- 93.00 500-600 84.00- 98.50 - 78.00- 80.50 600-700 82.00- 90.50 - 74.00- 83.00 700-800 77.00- 83.50 - - 800-900 72.50- 82.75 - 68.00 900-1000 71.00- 76.00 - 63.50 1000-1100 69.50- 70.00 - -
Holstein Steer Med and Lge 2 300-500 70.00- 81.00 500-700 53.00- 76.00 700-900 65.00 900-1100 53.75- 60.25
Heifers Med and Lge 1 Small 1 Med and Lge 2 200-300 93.50- 95.50 - 82.00 300-400 85.00- 95.50 71.00- 79.00 81.00-90.00 400-500 80.50- 88.75 70.00- 78.00 75.00- 82.00 500-600 77.50- 86.25 66.50-70.00 71.50- 81.00 600-700 72.75- 80.50 60.00- 66.00 70.25- 70.50 700-800 70.00-

74.00 - 63.00- 66.25 800-900 65.00- 73.00 - 62.50
Bulls Med and Lge 1 Small 1 Med and Lge 2 200-300 105.00-130.00 - 89.50-98.00 300-400 103.00-113.00 75.00- 84.00 82.00- 95.00 400-500 85.00-105.00 85.00 77.50- 88.50 500-600 77.50- 94.50 65.00-75.00 71.00- 76.25 600-700 72.00- 81.50 61.00- 66.00 67.00- 74.75 700-900 67.00-69.50 - 56.50- 67.50
Slaughter Cattle 512 head
Slaughter Cows 461 head Breaking Utility and Commercial 2-4 32.00- 42.00 Cutter and Boning Utility 1-3 29.75-42.00 Canner and Low Cutter 1-2 27.50-35.00
Slaughter Bulls 51 head YG 1-2 900-1300 lbs 45.75 YG 1-2 1300-1600 lbs 42.00- 47.75 YG 1-2 1600 lbs and Over 43.50- 52.25
Cows Returned to Farms 145 head Medium and Large 1, 4-8 yrs old 1000-1200 lbs Bred 3-7 months 600.00-800.00 per head Medium and Large 1, 10 yrs old and up 510.00-600.00 per head Medium and Large 1 few 2, 4 yrs old to aged 800-1360 lbs bred 3-7 months 400.00-710.00 per head Cows with Calves at Side 4 pairs Medium and Large 1, 4-6 yrs old 1100-1175 lbs With calves 200-260 lbs 810.00-1075.00 per pair Medium 1, 8 yrs

to aged 975-1125 lbs With calves 175-215 lbs 600.00-685.00 per pair Baby Calves Returned to Farms 77 head Newborn to 4 weeks 20.00-147.00 per head Over 100 lbs 77.00-120.00 per cwt
Lambs 125 head Slaughter Lambs 68 head Woolled Choice Few Prime 1-2 Few 3 113-121 lbs 70.30- 77.00 Good and Few Choice 1-2 89 lbs 87.00 Feeder Lambs 27 head Medium and Large 1-2 70-85 lbs 103.00 60-70 lbs 104.50 Small 1-2 73 lbs 108.00 Slaughter Ewes and Rams 30 head Ewes Choice 2-4 37.50 Utility and Good 1-3 41.75- 48.25.

Lean 85-90% lean 32.00-36.00 Shells 32.00 & down.
BULLS: Yield Grade 1 1185-1645 lbs 49.50-56.50, Yield Grade 2 1225-1695 lbs 38.50-48.50.
FEEDER CATTLE: STEERS: few Medium and Large 1 320-450 lbs 90.00-107.00, 500-625 lbs 81.00-83.00, few Medium and Large 2 325-450 lbs 65.00-85.00, 600-850 lbs 61.50-73.50; HEIFERS: few Medium and Large 1 300-475 lbs 73.00-87.00, 550-725 lbs 69.00-73.00, Medium and Large 2 335-485 lbs 56.00-66.00, 500-850 lbs 51.00-64.00; BULLS: few Medium and Large 1 500-625 lbs 79.50-83.50, Medium and Large 2 350-500 lbs 76.00-82.00, 510-700 lbs 68.50-75.00.
CALVES 171...(All calves sold per cwt). VEALERS: one Choice 190 lbs 112.50, Standard and Good 90-120 lbs 40.00-75.00, 60-85 lbs 35.00-55.00, Utility 50-110 lbs 20.00-36.00.
FARM CALVES: Holstein bulls steady..No 1 Holstein bulls 85-130 lbs 125.00-187.50 mostly 135.00-175.00, No 2 75-120 lbs 75.00-125.00; few No 1 Holstein heifers 95-105 lbs 260.00-300.00, No 2 75-120 lbs 100.00-230.00.
Beef type bulls and heifers 70-110 lbs 75.00-185.00, 200-270 lbs 80.00-98.00
HOGS 26...BARROWS AND GILTS: 45-50% lean 235-275 lbs 37.75-40.75, 40-45% lean 220-345 lbs 33.50-36.50.
SOWS: one US 1-3 360 lbs 31.50, one 570 lbs 34.00.
BOARS: couple 360 & 640 lbs 13.00 & 14.00.
FEEDER PIGS 21...US 1-3 30-40 lbs 22.00-26.00, US 3 50-70 lbs 19.00-27.00. per head.
SHEEP 247...Slaughter lambs steady.
SLAUGHTER LAMBS: High Choice and Prime 105-110 lbs 70.00-84.00, Choice 35-50 lbs 140.00-145.00, 55-75 lbs 108.00-136.00, 80-100 lbs 80.00-91.00, Good and Choice 55-95 lbs 69.00-97.00.
FEEDER LAMBS: Good and Choice 35-50 lbs 65.00-107.00.

SLAUGHTER SHEEP. 20.00-47.00, Yearlings 50.00-65.00.
GOATS 37...(All sold by the head)
Large Billies 90.00-123.00, Medium 50.00-76.00, Large Nannies and Wethers 50.00-76.00, Medium Nannies 31.00-44.00, Large Kids 30.00-39.00, Small 10.00-20.00.

Grantsville Livestock

Grantsville, Maryland
Report Supplied by Auction
Saturday, Dec. 16
STOCK STEERS AND BULLS 200-500 LBS. 50.00-115.00.
STOCK HEIFERS 45.00-92.00.
SLAUGHTER STEERS GOOD TO CHOICE UP TO 70.00, MEDIUM TO GOOD 45.00-62.00.
HOLSTEIN STEERS GOOD 42.00-59.00, LIGHT 45.00-60.00.
SLAUGHTER HEIFERS GOOD TO CHOICE 56.00-70.00, MEDIUM TO GOOD 45.00-55.50.
BULLS HEAVY 44.00-52.00, LIGHT 35.00-61.50.
COWS UTILITY HOLSTEINS 32.00-43.00, CANNERS 30.00-35.00, CULLS 25.00 AND DOWN.
BOB CALVES 50.00 AND DOWN
HOLSTEIN BULL CALVES RETURN TO FARM 90-120 LBS UP TO 130.00.
HOLSTEIN HEIFER CALVES RETURN TO FARM UP TO 240.00.
BEEF CROSS CALVES RETURN TO FARM UP TO 148.00.
HOGS TOP QUALITY UP TO 48.00, HEAVY UP TO 45.00, LIGHT 20.00-45.00, FEEDER PIGS BY HEAD UP TO 30.00.
SOWS 20.00-38.00.
MALE HOGS 6.00-30.00.
LAMBS 70-85 LBS UP TO 112.00, 85-125 LBS. UP TO 134.00, 30-60 LBS UP TO 160.00, CULLS UP TO 72.00 SHEEP UP TO 47.00.

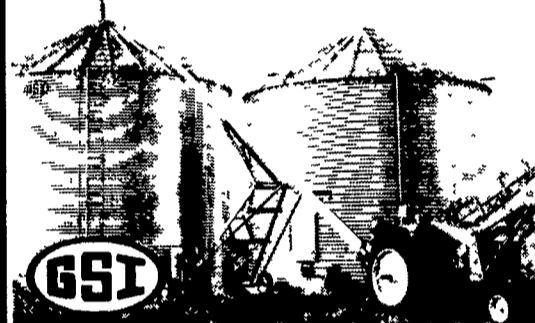
Eighty-Four Livestock Auction

Eighty-Four, Pa.
Monday, Dec. 18, 2000
Report Supplied By PDA
CATTLE 215...(PDA)..Compared to last week's sale...cows steady to 1.00 higher on Lean cows, bulls steady to 2.00 higher. STEERS: one Choice 2-3 1375 lbs 68.00, one Select 1-3 62.00. HOLSTEIN STEERS: Standard 1-2 49.00-52.00. HEIFERS: one Select 1-3 57.50, Standard 1-2 46.75-55.00.
COWS: Breakers 75-80% lean 39.00-40.50, Boners 80-85% lean 35.50-39.50,



automatic farm systems
608 E. Evergreen Road, Lebanon, PA 17042
Phone: 717-274-5333
e-mail: afs@nbn.com

ON FARM STORAGE FOR MAXIMUM PROFITS



- FARM BINS
- GALVANIZED FANS AND HEATERS
- TOP DRY SYSTEMS
- GRAIN DRYERS
- HOPPER BOTTOM TANKS
- COMMERCIAL FLAT BOTTOM
- FLEX-FLO FEED SYSTEMS
- SAFETY ACCESS EQUIPMENT

We Supply Expert Installation and Service
Check Our Prices Before You Buy

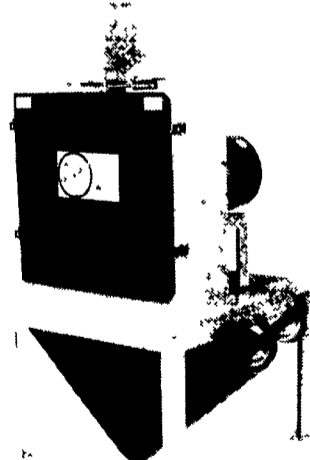
GSI FEED BINS

Automatic Farm System
BIN UNLOADER
Ensures Dense Material Flow



Expert Installation

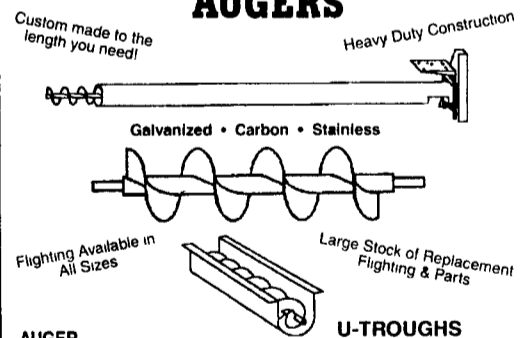
HAMMER MILLS for Grinding High Moisture & Dry Grains



Grinds Finer than Roller Mills.

Call Us For Your Nearest Dealer!

CUSTOM MADE AUGERS



- AUGER INSTALLATIONS**
- ✓ In feedlots
 - ✓ In drying systems
 - ✓ Commercial applications
 - ✓ At feedmills or elevators
 - ✓ Around poultry & dairy barns
 - ✓ At your grain bins or bulk tanks
 - ✓ Replacement Augers for feed mixers and farm equipment

Standard Auger Specifications

	4"	6"	8"	10"
Tube Gauge	16	14	14	12
Flight Thickness	3/16"	3/16"	3/16"	1/4"
Bu./Hr	250	850	2000	3000
RPM	431	431	431	431

Call Us For Custom Specifications

EQUIPMENT FOR SALE

- Used 3,000 BPH Bucket Elevators, 65 ft Discharge Hgt., Gear Drives, Good Condition
- New GSI 18 ft x 8 Ring, 45' Hopper Tank with Ladder, 5400 bu. Capacity, \$7,600

WE CUSTOM MANUFACTURE

Painted, Galvanized and Stainless Steel Fabrication, Feed Bins, Feeders, Hoppers, Covers, Dump Pits, Augers, and Control Systems to Automate Your Operation.

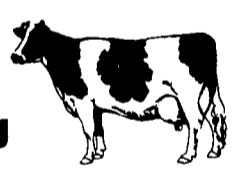
McElwee's Livestock

Home of Shippensburg Cownet
3 Locations To Serve You

Newburg
Mon. 9-4, Thurs. 9-2
(717) 423-6869

Woodsboro, MD
Tues. 10-2
(301) 845-6232

Chambersburg
Wed. 9-3
(717) 267-3321



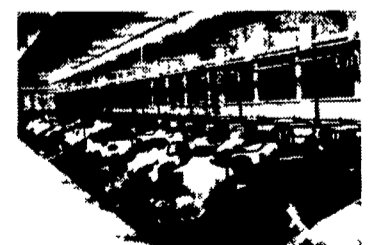
Receiving All Cows, Bulls, Steers, Calves
Call For Daily Price Quotes



Pasture Mat

The Golden Standard In Cow Comfort

Pasture Mat Plus
The Perfect Addition To Your Pasture Mats



Why Pasture Mat?

- Its soft durable design provides added cushion to both old & new mattresses
- It helps to remove the ripple effect of the mattress, and increases the ease of cleaning
- Pasture Mat is tightly stuffed with rubber and sewn every 4" to prevent shifting
- Proven most durable top cover
- Least abrasive top cover on the market
- Fits any stall
- Proven performance

For details and installation with over 7 years experience, call:
Petersheim's Cow Mattresses

117 Christiana Pike (Route 372), Christiana, PA 17509
U.S. Pat. No. 5653195
610-593-2242
Ask For Merrill or Sam