

Lancaster Farming *Antiques Center*

19th Century Fine Dining Symbolized By Tiffany Flatware

(Continued from Page B22)

crudeness of their execution and non-standard markings."

He also points out that exotic pieces are rare and expensive, "but, the prices are usually justified by the artistry and craftsmanship as well as the rarity."

He also advises collectors to be on the lookout for pieces not covered or illustrated in his book.

It is still possible to find pieces of old Tiffany flatware in the average antiques shop or show

booth, but the "really good stuff comes up at auction at Sotheby's or Christie's in New York only about twice a year."

If you see a piece marked Tiffany & Co., along with another silver maker's name or hallmark, such as Gorham, this shows Tiffany to be the retailer, not the maker.

"Don't limit your use to the original intent," he advises. "A terrapin fork

serves just as well as a pastry fork and will make for interesting table conversation. A waffle knife is perfect for lasagna."

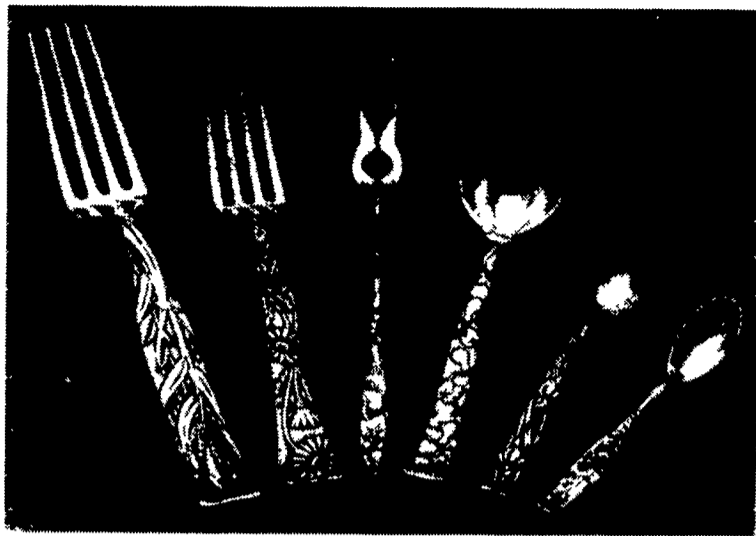
Because of the many techniques used in the different patterns a grouping of dessert knives in Japanese (Japonesque) style could be mounted and framed. This particular style had varied applied figural designs. Among them a beetle, fish in foliage, turtle.

Imagine serving a bowl of potato chips with a Tiffany Sarato-

ga chip server! The servers originated in 1875. They weren't listed in his Blue Book until early 20th century. In the 1913 book, they were listed as potato chip servers.

Dr. Hood wrote the book with Roslyn Berlin (Tiffany dealer for 25 years) and Edward Wawrynek (former Tiffany vice president).

The Palm Beach Exhibit, "A Celebration of Tiffany Silver Flatware," Dec. 18-24, at Rinceaux in Palm Beach.



Rare Tiffany silver flatware "vine" pattern, c.1872 with 13 different plant motifs. Photo credit: "Tiffany Silver Flatware 1845-1905," by William P. Hood Jr., Published by the Antique Collectors' Club.

PUBLIC AUCTION

Saturday, Dec. 30, 2000
9:00 A.M.

LOCATION: Corner of Railroad & Water St., Hughesville, PA. (At the Wayne Arthur Auction Gallery) Auction arrow at traffic light & bank on Main St. day of auction.

ANTIQUES - COLLECTIBLES

Preview Saturday, December 30 - 7:30 a.m. to 9:00 a.m. 2 Pc. Secretary w/ Writing Flap, Mahogany w/Crotch-Grain Veneering, 7'6" H; Grained D/T Blanket Chest, Turned Feet; Mixed Wood 2 Pc. Stepback Kitchen Cupboard; Ornate Library Table; Empire Chest of Drawers; Decorated 3 Drawer Sewing Stand; (2) Walnut Marble Top Dressers, No Mirrors; **Following Oak Furniture:** 3 Pc. Bedroom Suite, Bed Cut Down - 2 Door Bookcase - Treadle Sewing Machine - Umbrella Stand; Pressed Back rocker, Man of the North Wind - Parlor Stand; Early Splay Leg Chair, Legs Mortised through Seat, Tea Cart; Nest of Stands; Room Divider; Duncan Phyfe Style Dropleaf Table; Floor and Table Lamps; Plank Bottom and Roush Type Seat Chairs; Umbrella Stands in Pottery and Brass Type; Waterfall Dresser and Chest of Drawers; Parlor Stands; Pictures and Frames; Ogee Frames, Organ Stool; Magazine Rack; Wall Mirrors; Washstand; (2) Windsor Style Braceback Arm Chairs; Depression Wardrobe and Dresser; Marble Door Stops; Chamber Pots; White Granite Coffee Pot; World War I Clothing; Hats & Hat Boxes; **Porcelain Chew Mail Pouch Tobacco Thermometer, 39" L;** Striped Luggage; Bracket Light; Baskets; Shawnee Corn Pitcher and Shakers; Set of Dishes, Homer Laughlin, Virginia Rose; Fiesta Ash Trays; Hen on the Nests; Depression Glass; Granite Strainer; Mixing Bowl; Griswold Dutch Oven; Children's Books; Books Genealogical & Biographical Annals of North'd. Co.; History of the West Branch Valley of the Susquehanna; Sheet Music; Pewter; Wise Potato Chip Can; Wooden Ironing Board, plus many other items of interest; Misc 3 Pc Modern Wicker Set; Sentry Safe; Conn Elec Organ, Writing Desk; Plus Everyday Housewares; Etc

JEWELRY - GOLD COINS

Jewelry at 12 Noon Followed by Coins

Ladies 18 Kt White Gold Filigree Ring w/3 Old European Cut Diamonds, Approx. Total Weight of 3 Stones 75 Ct; Ladies Platinum Genuine Star Sapphire Ring w/Side Diamonds, Ladies 14 Kt Yellow Gold Ring, Lion Head Design, Garnet Eyes & 1 Diamond in Center Set, Lapel and bar Pins; Cloussoné Bracelets; Cameo Pin; Pearls; Clasp Stamped Sterling; Ladies Wrist Watches, Bulova 21 Jewel, Elgin 17 Jewel, Plus a nice selection of Misc Jewelry; **COINS** (5) \$5.00 Gold Pieces, 1879-80-81-1901 & 13, (4) \$2.50 Gold Pieces, 1915, (3) 1926, \$1.00, 1874 Holed

TERMS: Cash or PA Check. Lunch
www.auctionads.com
www.auction-locator.com

Estate of
MAIRE B. MACLAY
of Sunbury and other consignors

MARK J. JONES, AUCTIONEER
Phone (570) 286-0052 • Lic. #AU1595-L
Jeff Dunkelberger • Lic. #AU3043-L



PUBLIC SALE OF ANTIQUES, PERSONAL PROPERTY AND TOOLS SAT., DEC. 30, 2000 SALE AT 9:00 A.M.

TO BE HELD IN THE DENVER FIRE
HALL, LOCUST ST. DENVER BORO

Drop Leaf Table; Blanket Chests; Dining Room Suite; 3 Pc. Bedroom Suite; Dressers; Bookcase; Cherry Hutch; Haywood Wakefield China Cabinet; Martin Chairs; High Chair; Platform Rocker; Breakfast Set; Wardrobe; Clothes Tree; Sofa With End Recliners; G.E. Refrigerator; G.E. Upright Freezer; G. E. Washer, Dryer; A.C; Gibson Chest Freezer; Picnic Table; Square Table;

Depression; Glass Basket; 8 Pc. Wash Bowl Set; Cake Stand; Set Of Bavaria Germany Dishes; Mixing Bowls; Keroseene Lights; Carnival; Vases; Tomato S & P; Amythest; Hobnail; German Cup; Cow Creamer; E M & Co. Italy Dishes; Mantel Clocks; Blue Decorated Crock; Wooden Measure; Marble Game; Agate; Wooden Blocks; Child's Cupboard; Miniature Log Wagon, Wooden Wagon Made By Amos Martin; Wooden Sled; Toys; Games; Train Set; Power Trac Pedal Tractor; Miniature Singer Sewing Machine; Collection Of Dolls-- Horseman, Mantel And Others; Battery Operated Tin Car; Cast Iron Kettle; Waffle Iron; Brass Bucket; Sausage Stuffer; Cherry Seeder; Open Roaster; Milk Can; Metal Base Light; Demi John; Records; Oneida Set Flatware; Cutlery Set; Post Cards; Quilts; Crazy Stitch Comforter; Spreads; Afghans; Fancywork; Band Uniform; Army Suit; Yank Magazines;

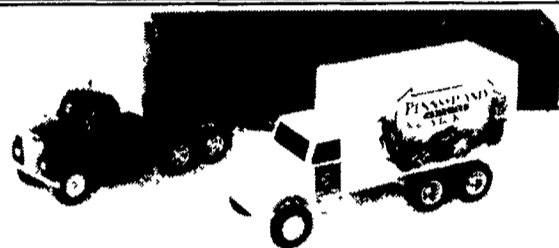
Shop Smith, Planer; B&D Band Saw; Berich Grinder; Router; Table; Bits; Lathe Tools; Belt And Disc Sanders; Furniture Clamps; SK Socket; Drills; Circular Saw; Spoke Shavers Chisels; Clamps; J. Engle Wood Plane; Broad Axe; Tap And Die; 2" Pipe Threader; Impact Wrench; Hobby Planes; ADJ., Open And Box Wrenches; Tool Box; Alum. Ext Ladder; Chain Saw; Compressor; Sprinkling Can; Sleds; Bike; 2 Wheel Trailer; Lawn Boy Mower; Weed Eater; Bag Wagon; Lots Of Hand And Garden Tools; Cedar Lumber; Fishing Rods; Swing; And Many Other Items Too Numerous To Mention.

Terms By:

**AMOS S. & BARBARA H. MARTIN
AND REV. DONALD GESCHWINDT**

Art Pannebecker
Auction Service

#AU001476L
717-336-6983
717-336-2933 (Fax)
B. HABECKER # 1296-L



PA FARM SHOW COLLECTIBLES

Available at the 85th PA State Farm Show, Jan.6 to 11th
FARM SHOW COMPLEX, Cameron & McClay Sts., Harrisburg

Special 85th Show Items:

BANK - Ford F-1 pickup by Ertl

Mack TRUCK loaded with a load of hay bales (by Ertl)

Also included is an *International* produce TRUCK with the colorful *Pennsylvania Produce* logo. (See photo)

SHOW TRACTOR Allis G with custom built cultivators

TRAIN CARS, HO scale, *Pennsylvania Railroad* caboose and G-7 "dummy" engine with PA Farm show graphics.

BEANIE TYPE HORSE, "PETE" the *Percheron* draft horse, color embroidering highlights the 85th Farm Show.

Priced from \$6 to over \$50 each

ADVANCE ORDER, or BUY AT SHOW, While supplies last!

Write or fax for color brochure (717) 768-3066
PA FARM SHOW, PO Box 553, Gap, PA 17527
email - nolt@dnolt.com

Another Cochran Auction ADVANCE AUCTION NOTICE NEW YEAR'S DAY AUCTION

Will sell the following from several local estates and others located at the COCHRAN AUCTION COMPLEX, 7704 Mapleville Road, Boonsboro, Wash. Co., Maryland on:

MONDAY, JANUARY 1, 2001 • 9:30 AM

FURNITURE, ANTIQUES & COLLECTIBLES

Victorian Pier Mirror; Walnut Dressers w/Mirror; Bow Glass China Closet; Server & China Cupboard; (2) Square China Cabinets; (2) Hoosier Style Kitchen Cabinets & Others; Cherry High Boy Chest; Drum Table; Large Drop Leaf Table; Pie Crust Table; Porcelain Top Tables; (4) Oak Wash Stands; Oak Dressers; Oak Chest of Drawers & Others; Dry Sink; Early Wood Box; Oak Secretary; Blanket Chest, Serpentine Desk; Oak Table w/(3) Leaves; Oak Wall Telephone; Early Walnut Night Stands; Selection of Chairs; Rockers; Broom Cutter; Granite Ware; Flat Top Trunks; Nice Selection of Good Wall & Mantel Clocks; Early Pottery - Some Blue & John Bell; Early Toy Trucks; Wind Up Tin Toys; Coverlet Dated 1843; Silver Tea Set; Fraternal memorabilia; Early German Bibles; Large Butter Churn w/Stand; Hull Console & Candle Holder Set; Sausage Grinder & Stand, Beddington Peacock Pitcher; Rebecca at the Well; Tankards; Large Selection of Nice Glassware including Carnival, Depression, Tree in the Meadow, Copper Luster, Azalea, Rosenthal, Universal, Hall, Duncan Miller & Others; Good Antiques & Collectibles Not Mentioned.

APPROXIMATELY (188) LONGBERGER BASKETS & ACCESSORIES

Most Baskets are in Combos, Many with Product Cards,
Some with Boxes

TERMS: Cash or approved check with positive identification. Not responsible for accidents. Lunch rights reserved.

AUCTIONEER: James G. Cochran & Wesley K. Ware
CLERK: T.E. Bikle

JAMES G. COCHRAN
CEO/Auctioneer

THOMAS F. BIKLI
Director of Marketing



J.G. Cochran

AUCTIONEERS & ASSOCIATES LTD.

PROFESSIONAL AUCTIONEERS & APPRAISERS SINCE 1972
7704 Mapleville Rd., P.O. Box 222, Boonsboro, MD 21713-0222
(301) 739-0538 • TOLL FREE (MD) 1-800-310-2844 • FAX (301) 432-2844
PA Lic. #(AS000832-L)

NATIONALLY RECOGNIZED - AWARD WINNING AUCTIONEERS SINCE 1972