

Northeast Broiler Fryer Parts Part I

ATLANTA, GA.
December 21, 2000

Report Supplied By USDA

Trucklot buying interest remained seasonally light and unaggressive as dealers attempt to maintain very limited inventories moving into the holiday weekend. Offerings of bone-in breasts were fully adequate to ample and often discounted to stimulate sales. Boneless-skinless breasts were at least adequate to available. Dark meat items were more than sufficient, and leg quarters were usually long. Wings remained the best item ranging no more than adequate to tight. Movement into retail and distributive channels was slow, however, fast food and restaurant lines continued to see active interest. The market tone was weak on bone-in breasts, fully steady on wings, no better than steady to instances weak on the balance.

ICE PACKED BROILER/FRYER PARTS, DELIVERED TO FIRST RECEIVERS IN POOL TRUCKLOT AND TRUCKLOT QUANTITIES, CENTS PER POUND. ITEM CURRENT NEGOTIATED TRADING BREAST - B/S 115-120 TENDER-

LOINS 130-135 BREAST - WITH RIBS 52-53 BREAST - LINE RUN 52 LEGS 33-34 LEG QUARTERS (BULK) 20-21 DRUMSTICKS 26-27 THIGHS 30-31 B/S THIGHS 78-79 WINGS (WHOLE) 81-82 BACKS AND NECKS (STRIPPED) 10-12 LIVERS (5 POUND TUBS) 35-40 GIZZARDS (HEARTS) 65-70

INCLUDES NEW YORK CITY METROPOLITAN AREA, NORTHERN NEW JERSEY, MASSACHUSETTS, CONNECTICUT, RHODE ISLAND, AND PENNSYLVANIA (NORTHEAST OF HARRISBURG). TODAY'S NEGOTIATED SALES AS OF 11:30 A.M.

North Atlantic Eggs

Atlanta, Georgia
Report Supplied by USDA
December 21, 2000

In Philadelphia, prices were unchanged to 2 cents higher on the larger sizes and unchanged for mediums. In Boston, prices were unchanged to one cent higher on the larger sizes and unchanged for mediums. Prices paid to producers in New England were 2 cents higher for jumbo through large, five cents higher for medium, and 4 cents higher for small. The market tone was

fully steady to firm. Demand was moderate to good, best where holiday features were in progress. Supplies were generally adequate for current needs. Breaking stock offerings were about adequate for the light to moderate demand. Light type fowl were sufficient.

PHILADELPHIA: PRICES TO RETAILERS, SALES TO VOLUME BUYERS, USDA GRADE A AND GRADE A, WHITE EGGS IN CARTONS, DELIVERED STORE DOOR, CENTS PER DOZEN. RANGE EXTRA LARGE 94.5-1.04, LARGE 92.5-1.02, MEDIUM 78-83.

BOSTON: PRICES TO RETAILERS, SALES TO VOLUME BUYERS, USDA GRADE A AND GRADE A, BROWN EGGS IN CARTONS, DELIVERED STORE DOOR, CENTS PER DOZEN. RANGE EXTRA LARGE 1.25-1.29, LARGE 1.22-1.26, MEDIUM 80-82.

NEW ENGLAND: PRICES PAID TO PRODUCERS, CASES EXCHANGED, GRADE YIELD BASIS, BROWN EGGS LOOSE, AT FARM, CENTS PER DOZEN. RANGE, JUMBO 1.25-1.28, EXTRA LARGE 1.10-1.13, LARGE 1.07-1.10, MEDIUM 66-69, SMALL 21-24.

North Atlantic Eggs

Atlanta, Georgia
Report Supplied by USDA
December 21, 2000

In Philadelphia, prices were unchanged to 2 cents higher on the larger sizes and unchanged for mediums. In Boston, prices were unchanged to one cent higher on the larger sizes and unchanged for mediums. Prices paid to producers in New England were 2 cents higher for jumbo through large, five cents higher for medium, and 4 cents higher for small. The market tone was fully steady to firm. Demand was moderate to good, best where holiday features were in progress. Supplies were generally adequate for current needs. Breaking stock offerings were about adequate for the light to moderate demand. Light type fowl were sufficient.

PHILADELPHIA: PRICES TO RETAILERS, SALES TO VOLUME BUYERS, USDA GRADE A AND GRADE A, BROWN EGGS IN CARTONS, DELIVERED STORE DOOR, CENTS PER DOZEN. RANGE EXTRA LARGE 94.5-1.04, LARGE 92.5-1.02, MEDIUM 78-83.

BOSTON: PRICES TO RETAILERS, SALES TO VOLUME BUYERS, USDA GRADE A AND GRADE A, BROWN EGGS IN CARTONS, DELIVERED STORE DOOR, CENTS PER DOZEN. RANGE EXTRA LARGE 1.25-1.29, LARGE 1.22-1.26, MEDIUM 80-82.

NEW ENGLAND: PRICES PAID TO PRODUCERS, CASES EXCHANGED, GRADE YIELD BASIS, BROWN EGGS LOOSE, AT FARM, CENTS PER DOZEN. RANGE, JUMBO 1.25-1.28, EXTRA LARGE 1.10-1.13, LARGE 1.07-1.10, MEDIUM 66-69, SMALL 21-24.

Delmarva Broiler/Fryer

ATLANTA, GA.
December 21, 2000
Report Supplied By USDA
Movement of ready-to-cook whole birds remained seasonally limited with some light and spotty increases noted as

a result of changes in delivery dates due to holiday closings. Offerings remained fully sufficient for current inquiry. Live supplies were mostly moderate; weights were in a full range of light to heavy. Processing schedules were mostly moderate to moderately heavy. Less than trucklot asking prices were unchanged at 47 to 61 cents. Trade sentiment was about steady. In the parts complex, breast items were usually noted as readily available and slow to clear. Other cuts were at least adequate.

ESTIMATED SLAUGHTER OF BROILER/FRYERS IN DELMARVA (000)

ESTIMATED ACTUAL AVG. WEIGHT ACTUAL AVG. WEIGHT 12/21 12/19 12/18 12/14 12/12
2,339 2,105 4.97 2,389 4.89

BROILER/FRYER CURRENT NEGOTIATED PRICES FOR IMMEDIATE DELIVERY INCLUDES MOSTLY MULTIPLE-DROP SHIPMENTS OF BRANDED AND WING TAGGED TO NEW YORK CITY FROM DELMARVA

BRANDED U.S. GRADE A RANGE 40-59 WEIGHTED AVERAGE 49.50 NO. OF BOXES 14,038
7 of 8 plants reporting

North Atlantic Shell Egg Market

Atlanta, GA
December 20, 2000
Report Supplied By USDA

Prices were unchanged in the Midwest and California. In Boston, prices were higher on the larger sizes and unchanged on the balance. In most other locations, prices were higher on all sizes. The market tone was mostly fully steady. Retail demand was moderate to very good and best for holiday feature activity and severe weather conditions in the Midwest. Supplies remained adequate to tight. Breaking stock supplies were at least adequate for the light to moderate demand. Light type fowl were sufficient for regular to reduced processing requirements.

WHAT'S AHEAD FOR CORN & SOYBEAN FUTURES

- We Deal In Futures And Options
- Our Only Business is Commodity Futures and Options
- In Allentown Area and Same Principals For Over 25 Years
- When Buying options, your risk is limited to the loss of the premium paid plus all transaction costs. Buying futures and options have inherent risks and should be done only with risk capital

FOR INFORMATION..LITERATURE... CHARTS... PLEASE CALL

(610) 366-7979 or 800-543-8939
LEHIGH VALLEY FUTURES INC.
Commerce Plaza, Suite 249, 5000 Tilghman Street,
Allentown, Pa 18104

e-Mail: lvfuture@ptd.net web site: www.lvfutures.com
The risk of loss in trading futures and options on futures can be substantial. Futures and options trading may not be suitable for everyone. You should carefully consider the risks in light of your financial condition in deciding whether to trade.

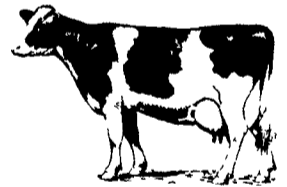
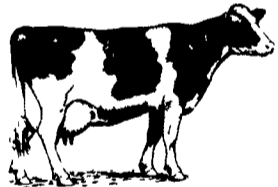


Hay And Straw Sales Will Start At 10 A.M. Every Wed.

WOLGEMUTH'S AUCTION
formerly Good's Auction
11 North Maple Ave.
Leola, PA 17540
717-656-2947
717-656-9558

PENNFIELD DAIRY DAYS

MARK YOUR CALENDARS!



January 2001				
Monday	Tuesday	Wednesday	Thursday	Friday
15	16	17	18	19
22	23 Holiday Inn Corband, NY 10:20 - 2:30	24 Shadowbrook Inn Tuphousock, PA 11:00 - 2:00	25 Corey Creek Golf Club Manfield, PA 11:00 - 2:00	26
29	30	31 Hanneryville Petersburg, PA 10:20 - 2:00		

February 2001				
Monday	Tuesday	Wednesday	Thursday	Friday
			1	2
			Yoder Restaurant New Holland, PA 10:20 - 2:30	
5 Morrisons Cove Mem. Park Martinsburg, PA 10:20 - 2:30	6 Plain-N-Fancy Restaurant Intercourse, PA 10:20 - 2:30	7 Lebanon Expo Center Lebanon, PA 10:20 - 2:30	8	9
12	13 Kauffman Center Greencastle, PA 10:20 - 2:30	14	15	16

****30 Minutes before start of meeting there will be coffee, milk & donuts!!**



Transportation Available

For Reservations Call Customer Service 1-800-995-0333

pennfield feeds

www.dairyfed.com