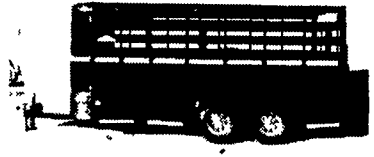




**HOSTETLER**  
**Truck Bodies & Trailers**  
**717-667-3921**  
 Milroy Exit off Rt. 322  
 Between Lewistown & State College



Moritz Livestock Trailers Semi Round Front  
 New Sides and Rear  
 6 x 16 7000# GVW **\$3,575**  
 6 8' x 16 Long 7000# GVW **\$4,125**

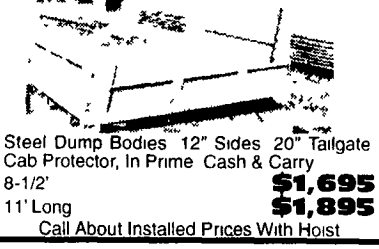
**Financing & Leasing Available**



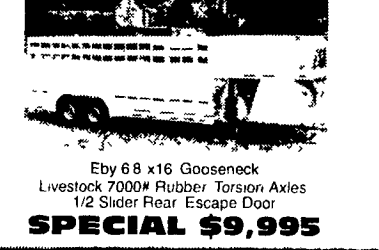
Hydraulic Tilt Deck Trailer  
 19 - 10 000 GVW **\$3,995**  
 19 - 12 000 GVW **\$4,295**  
 Also Available in 21



12' Eby Cattle Truck Bed, Roll Up Rear & Drop Ramp, Fits 1 Ton Truck with 84" CA  
**\$2,995**



Steel Dump Bodies 12" Sides 20" Tailgate Cab Protector, In Prime Cash & Carry  
 8-1/2' **\$1,695**  
 11' Long **\$1,895**  
 Call About Installed Prices With Hoist



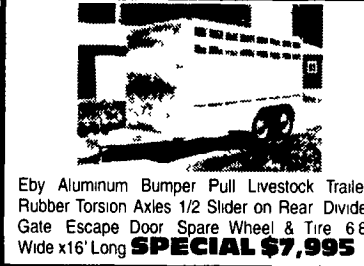
Eby 6 8 x 16 Gooseneck Livestock 7000# Rubber Torsion Axles 1/2 Slider Rear Escape Door  
**SPECIAL \$9,995**

**FEATURE PRODUCT**

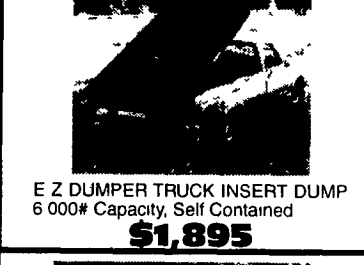


**EZ-508HD**

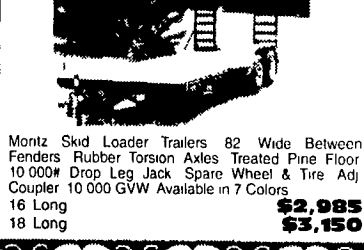
**EZ DUMPER 5'x8' ELECTRIC HYDRAULIC HOIST, 5000# GVW, ELECTRIC BRAKES**  
**\$2,895**



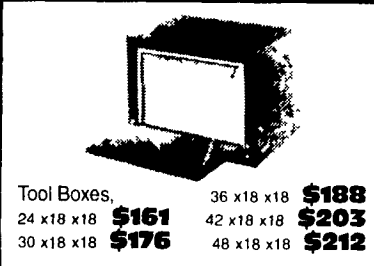
Eby Aluminum Bumper Pull Livestock Trailer Rubber Torsion Axles 1/2 Slider on Rear Divider Gate Escape Door Spare Wheel & Tire 6 8 Wide x 16' Long **SPECIAL \$7,995**



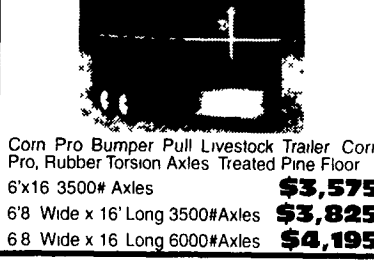
E Z DUMPER TRUCK INSERT DUMP 6 000# Capacity, Self Contained **\$1,895**



Moritz Skid Loader Trailers 82 Wide Between Fenders Rubber Torsion Axles Treated Pine Floor 10 000# Drop Leg Jack Spare Wheel & Tire Adj Coupler 10 000 GVW Available in 7 Colors  
 16 Long **\$2,985**  
 18 Long **\$3,150**



Tool Boxes, 36 x 18 x 18 **\$188**  
 24 x 18 x 18 **\$161**  
 42 x 18 x 18 **\$203**  
 30 x 18 x 18 **\$176**  
 48 x 18 x 18 **\$212**



Corn Pro Bumper Pull Livestock Trailer Corn Pro, Rubber Torsion Axles Treated Pine Floor 6'x16 3500# Axles **\$3,575**  
 6'8 Wide x 16' Long 3500#Axles **\$3,825**  
 6.8 Wide x 16 Long 6000#Axles **\$4,195**

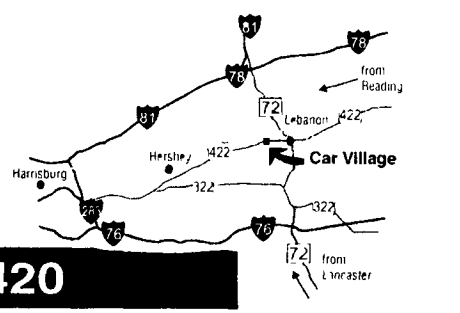


Moritz Slant Load Bumper Pull Live stock Trailers Dressing Room 7 High Starting at 2 Horse **\$3,725**  
 3 Horse **\$4,025**

**Business Hours:**  
**Mon.-Fri. 9 to 9;**  
**Sat. 9-4**

2300 W. CUMBERLAND ST. (Rt. 422) LEBANON, PA 17042 (Across From Lebanon Valley Mall)

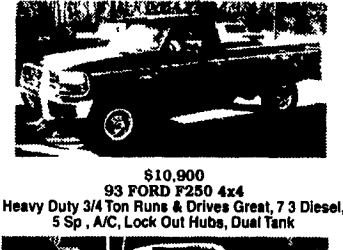
**CAR VILLAGE**  
**HEAVY DUTY TRUCKS**



**PHONE 717-274-2000 Toll Free 1-800-650-1420**



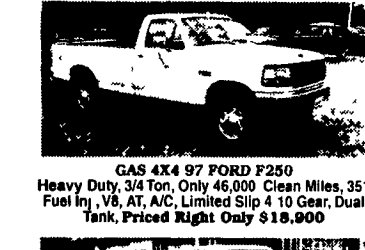
**DIESEL CREW CAB -99 FORD F350 4 WHEEL DRIVE** Loaded XLT, Powerstroke Diesel, AT, A/C, Comfortable 40/20/40 Seat, Tow Pkg., Alum. Wheels Its Here Waiting For You



**\$10,900**  
**93 FORD F250 4x4** Heavy Duty 3/4 Ton Runs & Drives Great, 7 3 Diesel, 5 Sp., A/C, Lock Out Hubs, Dual Tank

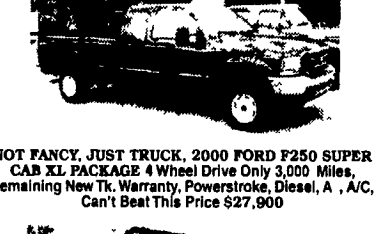


**5 SPEEDPOWERSTROKE DIESEL, 97 FORD F350** 4x4, 1 Ton., Solid Front Axle, Lock Out Hubs, Limited Slip 4 10, Good Looking TK, Runs Very Strong



**GAS 4X4 97 FORD F250** Heavy Duty, 3/4 Ton, Only 46,000 Clean Miles, 351 Fuel Inj., V8, AT, A/C, Limited Slip 4 10 Gear, Dual Tank, Priced Right Only **\$18,900**

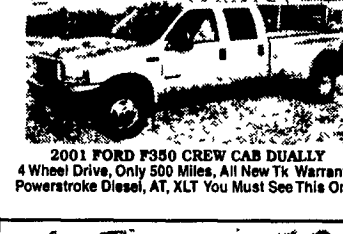
**460 SUPER CAB 93 FORD F250 XL** Great Tow Machine, 460 F.I. V8, AT, A/C, Tow Pkg. Only **\$10,900**



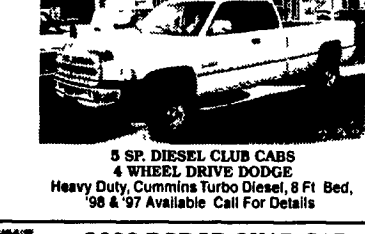
**NOT FANCY, JUST TRUCK, 2000 FORD F250 SUPER CAB XL PACKAGE** 4 Wheel Drive Only 3,000 Miles, Remaining New Tk. Warranty, Powerstroke Diesel, A, A/C, Can't Beat This Price \$27,900



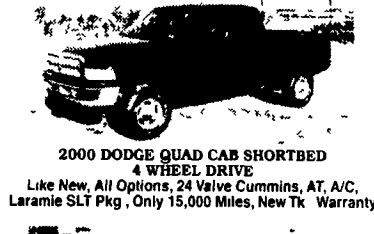
**GOOSENECK HITCH - 97 DODGE 2500 4X4** Strong Cummins Diesel, 5 Sp., A/C, Class 3 & Fold Down Gooseneck Hitches, Very Nice Truck, Very Strong Pulling Machine



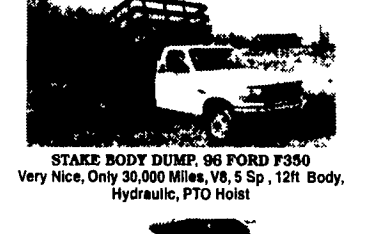
**2001 FORD F350 CREW CAB DUALLY** 4 Wheel Drive, Only 500 Miles, All New Tk. Warranty, Powerstroke Diesel, AT, XLT You Must See This One



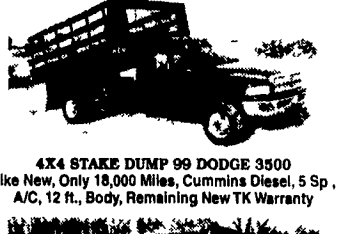
**5 SP. DIESEL CLUB CABS 4 WHEEL DRIVE DODGE** Heavy Duty, Cummins Turbo Diesel, 8 Ft. Bed, '98 & '97 Available Call For Details



**2000 DODGE QUAD CAB SHORTBED 4 WHEEL DRIVE** Like New, All Options, 24 Valve Cummins, AT, A/C, Laramie SLT Pkg., Only 15,000 Miles, New Tk. Warranty



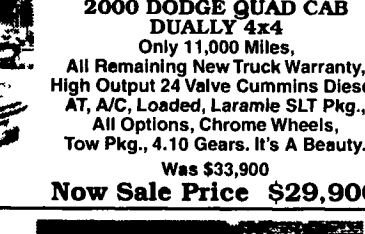
**STAKE BODY DUMP, 96 FORD F350** Very Nice, Only 30,000 Miles, V8, 5 Sp., 12ft Body, Hydraulic, PTO Hoist



**4X4 STAKE DUMP 99 DODGE 3500** Like New, Only 18,000 Miles, Cummins Diesel, 5 Sp., A/C, 12 ft., Body, Remaining New Tk. Warranty



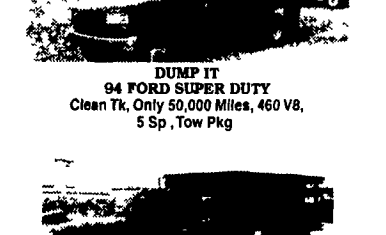
**2000 DODGE QUAD CAB DUALLY 4x4** Only 11,000 Miles, All Remaining New Truck Warranty, High Output 24 Valve Cummins Diesel, AT, A/C, Loaded, Laramie SLT Pkg., All Options, Chrome Wheels, Tow Pkg., 4.10 Gears. It's A Beauty. Was \$33,900 **Now Sale Price \$29,900**



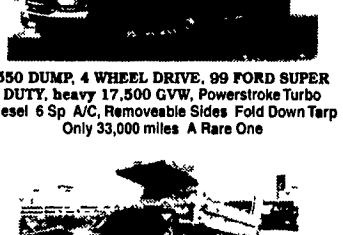
**LIKE NEW, ONLY 12,000 MILES, 97 DODGE 2500 4X4.** Perfect-A Must See, Cummins Diesel 5 Sp Trans., Loaded Laramie SLT, Heavy Duty Dana Frt & Rear Axles, Tow Pkg., Chrome Wheels



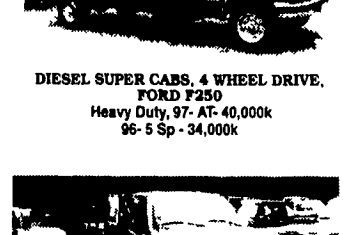
**DUMP IT 94 FORD SUPER DUTY** Clean Tk, Only 50,000 Miles, 460 V8, 5 Sp., Tow Pkg



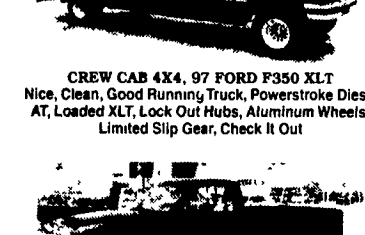
**1 TON FLATBED 94 CHEVY 3500** Very Clean Truck, Local 1 Owner, 350 V8, 5 Sp. Trans, 9 Ft. Bed, Only 50,000 Miles, Chrome Simulators, Removable Sides



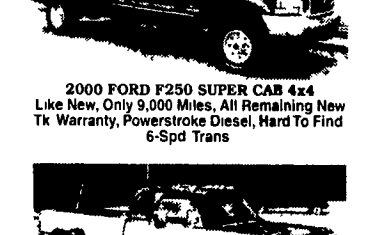
**ALUMINUM DUMP BED 97 CHEVY K3500 4X4 DUMP** Like New, Only 17,000 Miles, Vortec 5 7 Liter, Auto, A/C, Silverado Pkg., Snow Plow Prep Pkg., Aluminum Bed, Light Weight & No Rust



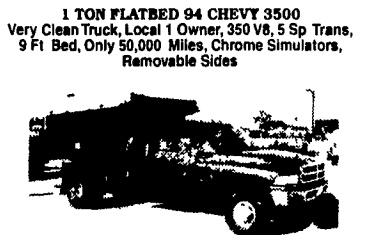
**DIESEL SUPER CABS, 4 WHEEL DRIVE, FORD F250** Heavy Duty, 97- AT- 40,000k 96- 5 Sp - 34,000k



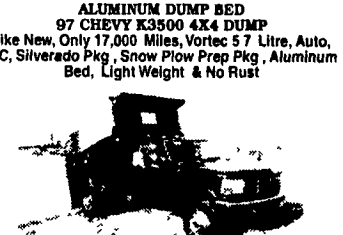
**CREW CAB 4X4, 97 FORD F350 XLT** Nice, Clean, Good Running Truck, Powerstroke Diesel, AT, Loaded XLT, Lock Out Hubs, Aluminum Wheels, Limited Slip Gear, Check It Out



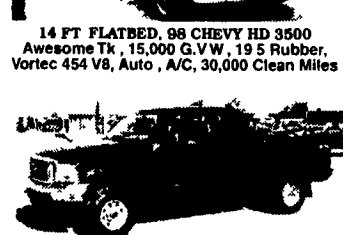
**2000 FORD F250 SUPER CAB 4x4** Like New, Only 9,000 Miles, All Remaining New Tk. Warranty, Powerstroke Diesel, Hard To Find 6-Spd Trans



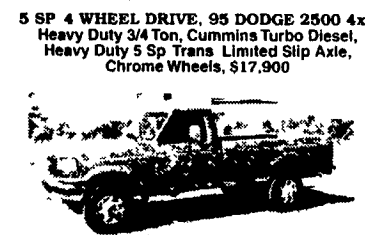
**L-PAK DUMP 4 WHEEL DRIVE 2000 DODGE 3500** Super Clean, All Fact Warranties, Only 28,000 Miles, Cummins Diesel, AT, A/C, Heavy Duty Dana Axles, Roll Back Tarp, Chrome Wheels, Good Looking Tk



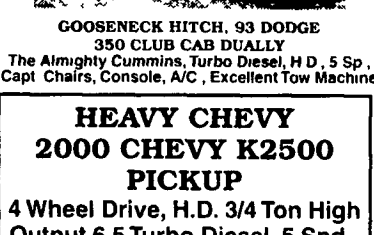
**4X4 DUMP TK, 97 FORD F350** Only 52,000 Clean Miles, powerstroke, Turbo, Diesel, AT, A/C, Pentic Hitch, Ready to Go



**SHORT BED SUPER CAB, 2000 FORD F250 4x4 SUPER DUTY.** Like New, Only 5,000 Miles, All New Truck Warranty, Powerstroke Turbo Diesel, AT, A/C, Loaded XLT, Aluminum Wheels, A Real Good Looker



**5 SP 4 WHEEL DRIVE, 95 DODGE 2500 4x4** Heavy Duty 3/4 Ton, Cummins Turbo Diesel, Heavy Duty 5 Sp Trans. Limited Slip Axle, Chrome Wheels, \$17,900



**HEAVY CHEVY 2000 CHEVY K2500 PICKUP** 4 Wheel Drive, H.D. 3/4 Ton High Output 6.5 Turbo Diesel, 5 Spd., A/C, Limited Slip Axle, Snow Plow Prep Pkg., Only 17,000 Miles