

35

TRUCKS AND TRAILERS

92 Ford Explorer Sport, \$5000. 610/933-0991, call between 9-5.

1989 Peterbilt 60 series, Detroit, 6' double bunk, 9 speed Fuller trans, air ride, cruise, AC, good rubber, good cond. \$12,500 obo 717-624-4342

'93 Dodge 150 HD 1/2 ton pickup, 318 magnum, 5 spd, PS, PB, AM/FM, 6200 GVW w/matching fiberglass cap, 54,000 one owner miles, excellent condition, \$6,250. 717-733-2873

Woodcrest Motors

SPECIALIZING IN TRUCKS & VANS
1200 North Reading Rd., (Rt. 272) Stevens, (Lancaster Co.) PA 17578
717-336-3130



95 FORD F150
Lat Cab 4x4
V8 AT A/C
Most Options
8800 GVW
76 000 Miles
Black & Silver
\$15,500



96 CHEV 1500 4x4,
5.7 V8.
AT A/C
8 600 GVW
Dk Blue
56 000 Miles
\$14,500



97 FORD F350 CREW CAB 4x4, 351 V8 AT A/C White, 61 000 Miles \$16,995



94 CHEV 2500 4X4 5.7 V8 5-Spd. A/C, 8,600 GVW, 68,000 Miles, White \$10,995



95 DODGE RAM 2500 SLT 4x4 5.9 V8 AT A/C Most Options 8800 GVW 66 000 Miles Black & Silver \$13,995



97 DODGE DAKOTA SLT Super Cab 4x4, 5 Spd Dk Green 69 000 Miles \$12,995

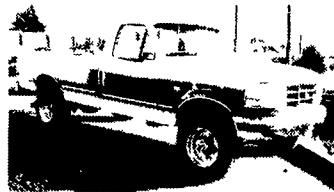
Anthony L.

LANDIS AUTO SALES

3394 Division Hwy., New Holland, PA 17557 (717) 355-0644
Rt 322, 1-1/2 mi. west of Blue Ball



2000 CHEVY SILVERADO LS 4x4 V8 AT PS PB A/C Tilt, Cruise CD PW PDL 15 000Mi \$19,800



92 FORD F-250 XLT 4x4 7.3 Diesel, AT, 140K \$8,995



98 FORD WINDSTAR V6, AT, PW, PL, PS, A/C, Few Minor Scrapes & Dings, 64,000 Mi \$7,900



97 CUTLASS SUPREME V6, AT, A/C, PN, PDL, 66,000 Mi, Black \$7,900

DIESEL PERFORMANCE



- Ford Powerstroke:** 30% More HP! 100 lbs. More Torque!
- GMC 6.5L Turbo:** 40% More HP! 60-90 lbs. More Torque!
- Dodge Ram Diesel:** 50-150 More HP! 100-300 lbs. More Torque!

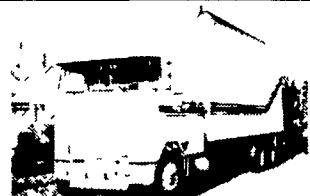
- High Flow Exhaust & Intake Systems
- Performance Chips
- Torque Converters, Throttle Bodies, Auto Lock Kits, Heavy Duty Clutches
- Exhaust Brakes
- Performance/High Flow Injectors

From The Diesel Specialists For Over 45 Years

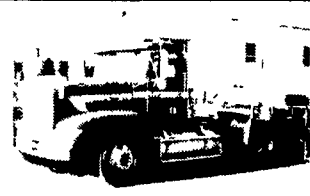
Penn Diesel Service Co.

Interstate 81 Exit 27 Harrisburg, PA

(800) 535-2913



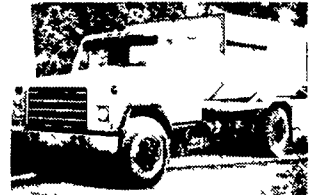
1983 INTERNATIONAL 9670 STRAIGHT BOX TRUCK Cummins 400 BC with Lube Brake Low Miles In Rebuild 9 Speed Transmission Rockwell Sq 100 4.33 Ratio Rears 11R 24.5 New Tires On New Aluminum Rims Air Ride Dual Stack Aluminum Air Deflector 24 1/2 Body With Lift Gate Stock #1351 Price \$9,900



1991 FREIGHTLINER DAY CAB FLD-120 3406 B Cummins 350 Horsepower Jacob Brake RTO 14609B Fuller Roadranger Transmission SQ 100 Rockwell 3.73 Ratio Rears Air Ride 11R 24.5 Tires on Aluminum Rims Stock #1306 Price \$12,900



1992 TRANSCO 48 Ft Flatbed Trailer Steel With Wood Floor Aluminum Tool Boxes New Straps Price \$7,900



1983 INTERNATIONAL S-MODEL CONVENTIONAL 9.0 Liter International Engine Automatic Transmission Single Speed Rear Air Brake 28 000 GVW Good Farm Truck \$4,900 Truck Sold With Or Without Septic Pusher Body Stock #1334



1989 PETERBILT 262 DOUBLE BUNK CABOVER 3406B Cummins 310 Horsepower With Lube Brake Eaton Fuller Roadranger R1X 14609B Transmission 40 000 Pound Rears With 3.55 Ratio Air Ride Low Profile 24.5 Tires on Steel Budd Wheels Mileage 558 310 Price \$7,900



1988 VOLVO WHITE CONVENTIONAL Cummins BC 1V 365 HP Turned to 400 Horsepower Jacob Brake Eaton Fuller Roadranger R1 14609 Transmission SQ 100 Rockwell 3.55 Ratio Rears 11R 24.5 Tires on Steel Budd's Low Miles 584 820 Stock #1337 \$6,900



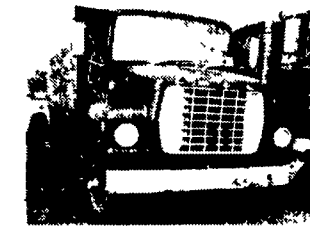
1987 FREIGHTLINER CONVENTIONAL DAY CAB Cummins BC 315 Horsepower Engine Eaton Roadranger R1 - 12609A Transmission Eaton DS-381 3.55 Rear Ratio 11R 22.5 Tires on Budd Wheels Stock #1350 Price \$6,900



1994 FREIGHTLINER FLD-120 Conventional Series 60 Detroit Diesel 365 Horsepower Jacob Brake RT 12609 B Fuller Roadranger Transmission Eaton DS 403 3.36 Ratio Rear Ends Low Profile 22.5 Tires on Budd Wheels Mileage 529 111 Stock #1344 Price \$11,500



1971 TRAILMOBILE LOG TRAILER Built in Headache Rack New Straps Stock #1304 Price \$1,500



1980 LN 800 FORD CONVENTIONAL 370 4 Valve 8 Cyl Engine Clark 285V Transmission Eaton 17121 Rear 6.50 Ratio 20 Foot Stake Body Dayton Wheels With 10 00 20 Tires Stock #1275 Price \$3,900



FALL FARMER AS 15 SUPER SPECIAL, 1986 WHITE CONVENTIONAL NTC 400 Cummins BC RTO 11609A Transmission SQ 100 Rears 11R 24.5 Tires Aluminum Front Wheels Stock #1314 \$5,900



1987 FREIGHTLINER CONV. TT w/Sleeper 350 Cummins RTX12609 SQHP Rears 3.90 Ratio Stk #1302 \$9,500

FIRESTONE MOTORS, INC.

330 S. THIRD ST. • LEMOYNE, PA 17043 • (717) 763-7721 • TOLL FREE 1-888-668-6778
www.firestonemotors.com

7511 Allentown Blvd. Harrisburg, PA 17112

75 TRUCKS IN STOCK

AFFORDABLE CARS AND TRUCKS, INC.

717-652-1925 FAX 717-652-4888

www.affordablecarandtruck.com

"You Gotta Believe!!"

Exit 27, Rt. 81; Rt. 22 East of Harrisburg; 3 Miles North of Hershey

94 Ford F250 4x4 H.D. 8,600 GVW, 5.8 5 Sp, AC & Loaded, Only 60,000 Mi, 1 Owner, Mint Condition \$11,995



94 Ford F250 XLT Ext. Cab 4x4 International Turbo Diesel, 5 Spd, A/C, Power Everything, Absolutely Mint Condition, 1 Owner, 200K \$10,995



73 Chevy 1500 4x4 PU Very Low Miles on 350 Motor, Standard Trans w/Granny Gear, New Tires & Good Shape, Over 100K 7/01 Insp, All Black \$2,450



85 Ford F350 XL 4x4 International Diesel, Rare, 4-Speed, 4 11 Rears, Extra Clean Truck, Must Be Seen & Driven To Appreciate \$6,995



93 Chev 2500 H.D. Silverado, 4x4, 350, AT, 8,600 GVW A/C, Most Options, Mint Cond, 108K Mi \$10,995



90 Chevy Silverado H.D. 2500 Ext. Cab 4x4, 8,600 GVW, AT, AC, PW, PDL, 350 V8, 2 Tone Paint, New Radials & Mint Condition, 100K ALSO: 90 1500 Longbed, Like Above, Looks Like New, Both \$7,995 ea.



88 Chev. Suburban Silverado 2500 4x4 Series 8,600 GVW, AT, Dual AC, 350, No Rust, Showroom, Garage Kept Cond, Only 90K \$7,995



91 Ford F250 XLT 4x4 Ext. Cab 7.3 Diesel, AT, PS, AC, Tilt, Cruise, Extra Clean Unit, Only 120K, Must Be Seen! \$9,500 Also 96 Powerstroke, Like Above w/90K



86 Ford F150 XLT Lariat 4x4 PU, V8, AT, AC & All Options This is a very well maintained 1-owner truck, only 100K Sale Priced at \$3,995



88 Ford F350 XLT Lariat, 4x4, 7.3 International Diesel, 5-Spd, A/C, PW, PDL, Includes Myers Power Angle Plow, Mint Cond, 116K Miles \$10,500 \$10,000



89 GMC K3500 1-Ton 4x4, AT, 4500 lb Motor, Extra Clean Truck, 100K, Over 9,000 GVW \$8,995 \$7,995