



HOSTETLER
Truck Bodies & Trailers
717-667-3921
 Milroy Exit off Rt. 322
 Between Lewistown & State College



Hydraulic Tilt Deck Trailer
 19' - 10,000 GVW **\$3,895**
 19' - 12,000 GVW **\$4,395**
 Also Available in 21'

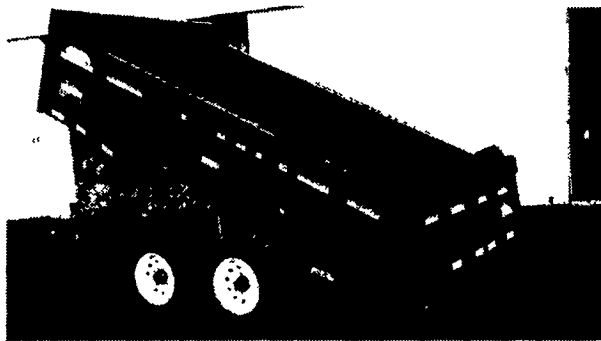
Financing & Leasing Available



Tool Boxes,
 24 x18"x18" **\$161** 36"x18"x18" **\$188**
 30"x18"x18" **\$176** 42"x18"x18" **\$203**
 48"x18"x18" **\$212**

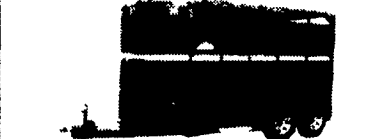
FEATURE PRODUCT

NEW DESIGN MORITZ DUMP TRAILER



DOUBLE DOORS WITH DUMP THRU GATE, TRACK SCISSOR HOIST, REMOTE CONTROL
CALL FOR MORE DETAILS

Corn Pro Bumper Pull Livestock Trailer, Corn Pro, Rubber Torsion Axles, Treated Pine Floor
 6'x16' 3500# Axles **\$3,575**
 6'8" Wide x 16' Long 3500#Axles **\$3,825**
 6'8" Wide x 16' Long 6000#Axles **\$4,195**



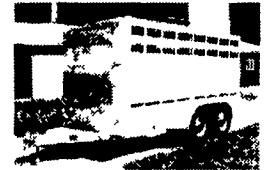
Moritz Slant Load Bumper Pull Livestock Trailers, Dressing Room, 7' High, Starting at 2 Horse **\$3,650**
 3 Horse **\$3,950**



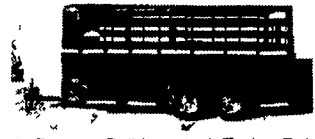
8'x80" Aluminum Single Wheel Pick Up Dump Bed, with Electric Hoist
 Cash & Carry **\$3,900**



Eby 6'8"x16" Gooseneck Livestock 7000# Rubber Torsion Axles 1/2 Slider Rear Escape Door
SPECIAL \$9,995



Eby Aluminum Bumper Pull Livestock Trailer, Rubber Torsion Axles 1/2 Slider on Rear Divider Gate Escape Door, Spare Wheel & Tire, 6'8" Wide x16' Long **SPECIAL \$7,995**



Moritz Bumper Pull Livestock Trailer, Rubber Torsion Axles, Treated Pine Floor, 1/2 Slider On Rear, Divider Gate, Escape Door, 6'x16', 7000# GVW
SPECIAL \$3,425



Moritz Skid Loader Trailers 82" Wide Between Fenders, Rubber Torsion Axles Treated Pine Floor 10,000# Drop Leg Jack Spare Wheel & Tire Adj Coupler, 10,000 GVW Available in 7 Colors
 16' Long **\$2,875**
 18' Long **\$3,030**



Single and Dual Wheel Pick Up Flatbeds, Bulkhead, Outside Pockets, Rear Skirt, With or Without Gooseneck Compartments
 Starting at **\$825**

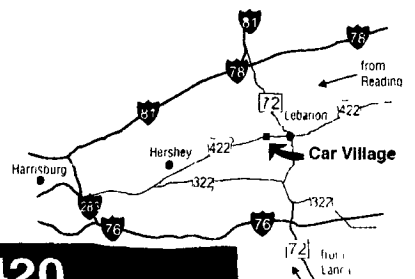


2000 Ford Dually Pick Up Bed Includes Taillights, Tailgate and Bumper
\$995

Business Hours:
 Mon.-Fri. 9 to 9;
 Sat. 9-4

2300 W. CUMBERLAND ST. (Rt. 422)
 LEBANON, PA 17042
 (Across From Lebanon Valley Mall)

CAR VILLAGE
HEAVY DUTY TRUCKS



PHONE 717-274-2000 Toll Free 1-800-650-1420



DIESEL CREW CAB -99 FORD F350 4 WHEEL DRIVE
 Loaded XLT, Powerstroke Diesel, AT, A/C, Comfortable 40/20/40 Seat, Tow Pkg., Alum Wheels
 Its Here Waiting For You



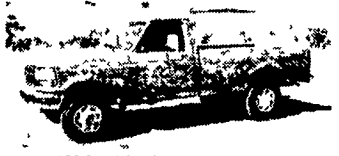
HEAVY DUTY 4X4 93 FORD F250
 Diesel Engine, 5 Sp. Trans, Lock Out Hubs, Good Truck, Great Price \$10,900



5 SPEED POWERSTROKE DIESEL, 97 FORD F350
 4x4, 1 Ton., Solid Front Axle, Lock Out Hubs, Limited Slip 4:10, Good Looking TK, Runs Very Strong



GAS 4X4 97 FORD F250
 Heavy Duty, 3/4 Ton. Only 48,000 Clean Miles, 351 Fuel Inj., V8, AT, A/C, Limited Slip 4:10 Gear, Dual Tank, Priced Right Only \$18,900



460 V8 5 SP 96 FORD F250 4X4
 Heavy Duty 3/4 Ton Pickup, Ready For Work, Strong Fuel Inj., V8, 5 Sp Trans, A/C, Lock Out Hubs, Trailer Tow Mirrors, Excellent Condition Inside & Out, Only 39,000 Original Miles



\$28,900
2000 FORD F250 QUAD CAB 4 WHEEL DRIVE
 Great Price on a Nice Truck Only 3,000 Miles, Remaining New TK Warranty, Powerstroke Diesel, AT, AC



GOOSENECK HITCH - 97 DODGE 2500 4X4
 Strong Cummins Diesel, 5 Sp., A/C, Class 3 & Fold Down Gooseneck Hitches, Very Nice Truck, Very Strong Pulling Machine



2001 FORD F350 CREW CAB DUALLY
 4 Wheel Drive, Only 500 Miles, All New TK Warranty, Powerstroke Diesel, AT, XLT. You Must See This One.



5 SP. DIESEL CLUB CABS 4 WHEEL DRIVE DODGE
 Heavy Duty, Cummins Turbo Diesel, 8 Ft Bed, 98 & 97 Available. Call For Details



2000 DODGE QUAD CAB SHORTBED 4 WHEEL DRIVE
 Like New, All Options, 24 Valve Cummins, AT, A/C, Laramie SLT Pkg., Only 15,000 Miles, New TK Warranty



STAKE BODY DUMP, 96 FORD F350
 Very Nice, Only 30,000 Miles, V8, 5 Sp., 12ft. Body, Hydraulic, PTO Hoist



4X4 STAKE DUMP 99 DODGE 3500
 Like New, Only 18,000 Miles, Cummins Diesel, 5 Sp., A/C, 12 ft., Body, Remaining New TK Warranty



2000 DODGE QUAD CAB DUALLY 4x4
 Only 11,000 Miles, All Remaining New Truck Warranty, High Output 24 Valve Cummins Diesel, AT, A/C, Loaded, Laramie SLT Pkg., All Options, Chrome Wheels, Tow Pkg., 4:10 Gears. It's A Beauty.
 Was \$33,900
Now Sale Price \$29,900



LIKE NEW, ONLY 12,000 MILES. 97 DODGE 2500 4X4. Perfect-A Must See, Cummins Diesel 5 Sp Trans, Loaded Laramie SLT, Heavy Duty Dana Frt & Rear Axles, Tow Pkg., Chrome Wheels



DUMP TRUCK 94 FORD SUPER DUTY
 Clean Tk, Only 68,000 Miles, V8, 19 & Rubber, 5 Sp., Tow Pkg.



550 DUMP, 4 WHEEL DRIVE, 99 FORD SUPER DUTY, heavy 17,500 GVW, Powerstroke Turbo Diesel, 6 Sp. A/C, Removable Sides, Fold Down Tarp Only 33,000 miles. A Rare One



DIESEL SUPER CABS, 4 WHEEL DRIVE, FORD F250
 Heavy Duty, 97- AT- 40,000k 96- 5 Sp.- 34,000k



CREW CAB 4X4, 97 FORD F350 XLT
 Nice, Clean, Good Running Truck, Powerstroke Diesel, AT, Loaded XLT, Lock Out Hubs, Aluminum Wheels, Limited Slip Gear, Check It Out



2000 FORD F250 SUPER CAB 4x4
 Like New, Only 9,000 Miles, All Remaining New Tk Warranty, Powerstroke Diesel, Hard To Find 6-Spd Trans



14 FT. FLATBED, 98 CHEVY HD 3500
 Awesome Tk., 15,000 G.V.W., 19 & Rubber, Vortec 454 V8, Auto., A/C, 30,000 Clean Miles



4X4 FLATBED DUMP 98 FORD F350
 12 ft Body Steel Floor, Powerstroke, 5 Sp. Trans. A/C, Only 39,000 Miles



\$28,500
99 DODGE 2500 Quad Cab Pickup, 4 Wheel Drive, 24 Valve Cummins, Runs Real Strong, AT, A/C, Tilt, Cruise, Power Mirror, Locks & Windows, Gorgeous Interior, Tow Pkg., Chrome Wheels



5 SP 4 WHEEL DRIVE, 95 DODGE 2500 4x4
 Heavy Duty 3/4 Ton, Cummins Turbo Diesel, Heavy Duty 5 Sp. Trans. Limited Slip Axle, Chrome Wheels, \$18,900



GOOSENECK HITCH, 93 DODGE 350 CLUB CAB DUALLY
 The Almighty Cummins, Turbo Diesel, H.D., 5 Sp., Capt Chairs, Console, A/C, Excellent Tow Machine



99 FORD 450 CREW CAB
 4 Wheel Drive, Rare Truck, Powerstroke Turbo Diesel, AT, A/C, Chrome Simulators, Low Profile Trailer Tow Body



4X4 DUMP TRUCK, 97 FORD F350
 Only 52,000 Clean Miles, powerstroke, Turbo, Diesel, AT., A/C, Pentic Hitch, Ready to Go



SHORT BED SUPER CAB, 2000 FORD F250 4x4
 SUPER DUTY, Like New, Only 5,000 Miles, All New Truck Warranty, Powerstroke Turbo Diesel, AT, A/C, Loaded XLT, Aluminum Wheels, A Real Good Looker



LOOK & SAVE, 99 FORD F250 SUPER DUTY PICKUP XL
 Only 300 Miles, Heavy Duty, 8600 GVW, Limited Slip Gear, Powerstroke, Diesel, 6 Sp Trans, A/C Remaining, New TK Warranty, Only \$20,900

IT'S HERE
2000 CHEVY K2500
4x4 Pickup, High Output 6.5 Turbo,
Heavy Duty 5 Sp., A/C,
Only 17,000 Miles