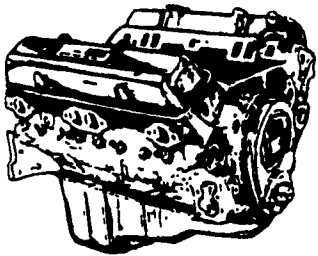


JONES

GENUINE
GM Parts

Nothing's better than an original.



GM GOODWRENCH
350 V8 1973-85
Part Number 10067353
New Engine - Not Rebuilt
36 Month or 50,000 Mile
Warranty

New Engine - No Core Fee **\$1,299⁰⁰**

WE'LL MATCH ANY COMPETITOR'S PRICE!

Goodwrench Transmissions Now In Stock! Call For Great Prices

Call 394-0711 for prices on other New or Remanufactured Goodwrench Engines. 2.5 Liter thru 454 cid: Gas and Diesel

Chevrolet - Pontiac - Olds - Buick - Cadillac - GMC

JONES GM PARTS CENTER

1335 Manheim Pike, Lancaster, PA 17604
Easily Located on Rt. 72 Just off of Rts. 283 & 30
Hours: Mon-Fri 7:30 a.m. - 8 p.m. Sat 7:30-3
(717) 394-0711

MORE THAN JUST POWER.



'94 FORD F450 XLT DIESEL
Auto 14' Bed PW, PL, A.C. 99K. Mi.,
15,000 GVW Hitch
\$11,900
610/269-3442
Chester County

Go In The Snow

1994 Ford Bronco XLT 4x4, Red Raspberry, V8, Auto, AC, PW, PDL, Tilt, Cruise, Leather
Was ~~\$12,900~~ **\$11,900**

Bad Weather No Problem
1994 Toyota 4 Runner SR5 4x4, Met, Red, V6, 5 Spd., Leather, Sunroof, AC, PW, PDL/T&C
Was ~~\$13,900~~ **\$12,999**

Off Road Fun
1993 Chevy 1500 Silverado 4x4, Blue & Silver, V8, 350, ExCab, AT, AC, PW, PDL, T&C, 271PK
Was ~~\$14,900~~ **\$13,999**

Luxury With Lots of Room
1996 Dodge Grand Caravan ES, White and Cammel, V6, 3.8, AC, Rear AC, AT, PW, PDL, T&C, Keyless, Cass, CD
Was ~~\$12,995~~ **\$11,900**

Fun To Drive
1997 Toyota Corolla DX, Green, 4Dr, 4Cyl, 5Spd., PS, PB, AC, PW, PDL, Cruise, Cass
Was ~~\$9,995~~ **\$8,995**

Nice & Easy On Pocket Book
1994 Pontiac Sunbird LE SDN, Red, 4 Cyl, AT, PS, PB, AC, Cass
Was ~~\$6,295~~ **\$4,495**

Hot Christmas Gifts
(New) Mo Peds, Scooters & Go Carts (New)

Holiday Auto Sales
(717) 295-5583
A Complete Service Garage PA State Insp.

1999 Ford F-350 Lariat Diesel 4x4 6Spd Manual Reese Hitch Hideaway 5th Wheel 25K Mi., Excellent \$26,500 540-888-3778

83 F-150 4x4, AT, Good & Solid w/Meyer 7' Plow 8.1K Mi \$3,500 610-932-0759

40' Ravens aluminum flat, 10' spread, air ride, ready for road, \$3,500. 717-328-2294.

TRAILER ENTERPRISES, INC.

ON SITE - FULL SERVICE HITCH & REPAIR FACILITY
MAKING SURE YOU GET THE BEST IN THE INDUSTRY!

- X GOOSENECK FLATBEDS
- X CARGO TRAILERS
- X AUTO CARRIERS
- X LAWN SERVICE & UTILITY
- X INDUSTRIAL & EQUIPMENT

• HOURS •
Monday - Friday 8 to 5; Saturday 9 to 12

"REVVIN' TO TAKE CARE OF ALL YOUR TRAILER NEEDS"

2 Horse Pull Type w/Aluminum Skin and Dressing Room - \$7,450

MORE CBS 6 X 13 STOCK TRAILER \$3,450

MORE 3 Horse Stock Trailer w/ Dressing Room - \$8,200

20' X 7' MAVERICK MODEL GOOSENECK (SHOWN W/OPT HUB CAPS)

EBY

TRAILERS ARE OUR BUSINESS!

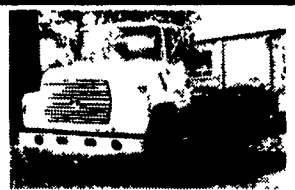
AL HAMILTON USED TRUCK SALES

P.O. Box 157, 55 Doe Run Road, Manheim, PA 17545

Phone: 717-665-7145 Fax: 717-665-2137



'86 FORD LN8000
New 10' Dump, 3208T, 250 HP, 5 Spd. Trans., 2 Spd. Rear, Custom Int., 33,000 GVW
\$19,500



'95 FORD LN8000
C&C, 8.3 Cummins, 210 HP, 6 Sp. Trans., Custom Int., Air Brakes, A/C, 250 W.B., 180 C.A., 35,000 GVW
\$23,500



'94 FORD LNT 9000 C&C
L-10 Cummins 280 HP, 9 Spd. Trans., Air Brakes, A/C, 264 WB, 192" C.A., 58,000 GVW
\$35,000



'87 FORD LN 8000 C&C
7.8L Ford Diesel, 240 HP, 6 Spd. Trans, Custom Cab, A/C, Air Brakes, 222 W.B., 156 C.A., 33,000 GVW
\$16,500



'93 INT. 4900
w/18' Morgan Box & Lift Gate, 8' High, 102" Wide, DT-466, 5-Spd. Trans., 35,000 GVW, A/C, Air Brakes
\$19,500



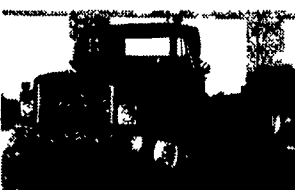
'93 INT. 4900
Tandem C&C, DT-466, 250 HP, 254" WB, 7 Spd Trans, 186 C.A., 58,000 G.V.W
\$32,500



'96 INT 4900
22' Danco Equipment Roll Back, DT-466E, 210 HP, 7-Spd. Trans., Custom Int- A/C, 33,000 GVW
\$34,500



'89 FORD LN8000
New 10' Dump, 7.8L Engine, 240HP, 6-Spd. Trans., 33,000 GVW
\$21,500



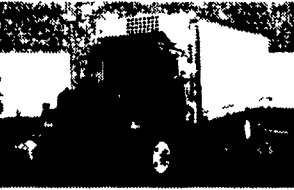
'87 INT S-1900 C&C
DT-466, 215 HP, 7-Spd. Trans., Air Brakes, A/C, 138 C.A., 206 WB, 32,800 GVW
\$15,500



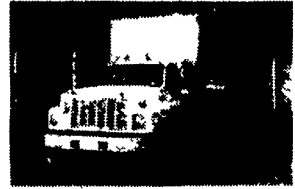
'98 EAGER BEAVER
10 HA-PT, 22' Deck, 6' Ramps, 102 Wide, Air Brakes, 25,000 GVW, Brand New
\$9,500



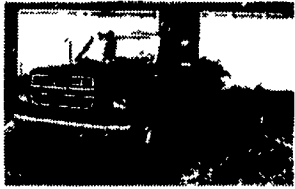
'85 INT. 1700 16' FLAT DUMP
9L Engine, 5 Spd. Trans., Hyd. Brakes, 25,000 GVW
\$14,500



'94 FORD LN 8000
22' Morgan Reefer w/MD-11 Thermo-King, Electric Stand-by, 8.3 Cummins, 210 HP, 6 Spd. Trans, 35,000 GVW
Will Separate **\$24,500**



'92 GMC TOP KICK
22' Van Body, 3116 Cat, 6 Spd. Trans., PS, AB, Lift Axle, 52,000 GVW, Low Miles
\$28,500



'93 FORD F-600 C&C
5.9 Cummins, 160 HP, 5-Spd. Trans., Hyd. Brakes, A/C, 174" W.B., 108 CA, 25,500 GVW
\$14,500



'94 FORD LNT 8000
26' Van Body, Lift Gate, Side Door, 8.3 Cummins, 225 HP, 9-Spd. Trans, Custom Cab, A/C, 58,000 GVW
\$35,500



'95 INT. 4900 C&C
DT-466, 210 HP, 6-Spd. Trans, Custom Int., A/C, 254" W.B., 185 C.A., Air Brakes, 35,000 GVW
\$23,500



'94 FORD F600 C&C
5.9 Cummins, 160HP, 5-Spd Trans, 2-Spd. Rear, Hyd Brakes, A/C, Custom Cab, 174" W.B. 104 C.A., 26,000 GVW
\$16,500



'92 FORD LN8000
C&C, 7.8 Ford Diesel, 210 HP, 6 Spd Trans., Custom Cab, Air Brakes, 234 W.B., 168 C.A., 33,000 GVW
\$18,500



'94 FORD F700
C&C, 429 Gas, 5 Spd Trans, 14,000 Actual Miles, 207 W.B., 140 C.A., Like New
\$17,500



'94 FORD LN8000
New 10' Dump, 8.3 Cummins 210 HP, 6 Spd Trans, Air Brakes, Custom Int, 35,000 GVW
\$29,500



'81 INT 1700
345 Gas, 5 Spd Trans, 2 Spd Rear, Hyd Brakes, 138" C A 218" W.B., 25,000 GVW
\$6,500



'94 GMC 3500 HD
8-1/2' Dump, 7.4L Engine, 5 Spd Trans, 15,000 GVW
\$19,500

"CLEANEST TRUCKS AROUND"