



32 MISCELLANEOUS

Freezer 4 door self-serve with Dunham Bush comp 208 230 3PH \$600. Call after 6PM 717-484-1108.

Xmas tree shredder/chipper, PTO driven, \$1700. Serious inquiries only 570-784-7513.

Cast Iron Radiators, Size Small, Good Cond 717-367-4797

Copper Thin Pipe, Approx 500' 1 1/4", 500' 1", 500' of 3/4", Good Cond, 717-367-4797

WANTED- Wholesale firewood 15-20 cords. 18" lgth, split. Del to Montgomery Co., BISHOP WOOD PRODUCTS, INC 215-723-6644

14x56 mobile home, \$3,000 OBO. (2) storage sheds, 12x16 and 10x16, \$400 each. 275 gal oil tank, \$50. Must be moved. 610-286-6429.

Firewood for sale. 1 cord, chopped, split & seasoned, \$75. Unsplit P/U load, \$30. 717-665-1684, 717-665-2500

4,000 TOBACCO LATHS FOR SALE. 717-445-8443.

350,000 BTU oil fired hot air furnace fuel tank, stainless steel chimney top used in truck garage \$300. 717-629-4740 or 717-687-6850.

Bridgeport type certmill (Enco), 9x42, 2hp, 3ph, exc cond, DRO&PF. Call 610-826-3544.

Shelving: retail gondolas, wall units, end caps, cream. 717/361-8705.

Detroit 3-53 Diesel w/GM 1 Ton 4Spd & Aux Trans Eng & Trans Work, Good \$600/OBO 717-367-6939/717-367-2502

Wood heat. Clean, safe and efficient Central Boiler OUTDOOR WOOD FURNACE. Heats multiple buildings. Available in carbon steel & titanium enhanced stainless. Call Kenneth Stauffer 570/539-4606, 888/539-4606.

Guitars & amps wanted. Cash paid. Call Dave 717/993-3571.

Coolant: water soluble machining coolant, synthetic & regular. \$6/gal, retails for \$18/gal. 717-354-3105.

JD power angle plow for 140 thru 300 series, \$550 obo. JD cab enclosure, fits 140 thru 300 series \$500 obo. 717-838-2962 days

Heavy duty winch \$300. Large wood fired boiler w/accessories, \$500. 717-866-7313.

33 RECREATIONAL VEHICLES



GLARY COMPONENT SAW

4 blades cut at once. All 4 cutting heads can be set at angles from 0-90 degrees. Chain driven material feed. Heads can be adjusted to cut material up to 23' in length.

\$2,500

See at 245 Fetterville Rd., East Earl, PA 17519

Call for directions **717-354-7561**

32A ANTIQUES

Oliver OC-6 Gas, 3 Pth, Runs & Operates

- Well **\$4,950**
- Oliver OC 6, Gas, Wide Track **\$3,000**
- Oliver OC-6 Diesel **\$3,500**

(Will Run, Needs Pump Work)

JD "H" Restored, New Tires, Hand Start **\$3,500**

IH F-12 Steel Rears, Rubber Tire In Front, Restored **\$2,250**

IH F-20, New Tires, Runs Good **\$1,950**

AC Model CA With Dirt Plow **\$2,500**

Ford 8N, 6 Cyl. Engine **\$4,000**

Cockshut Model 30 Tractor, Restored **\$4,250**

JD Model 420, Three Point, PTO **\$2,650**

Massey Harris Pony Tractor with Dirt Plow **\$2,000**

Fordson Steel Wheel Tractor, Restored **\$1,850**

(2) International Cub Cadet Tractors **\$500 Each**

Oliver BG Dozer, 6 Cyl., Gas, Runs Good **\$4,250**

Cletrac Unstyled E Runs & Operates **\$3,750**

Cletrac Styled E Complete, Runs **\$2,000**

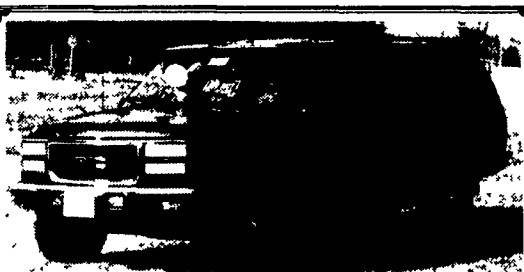
Cletrac Styled Parts, Motor Free **\$750**

Cletrac W Parts Tractor **\$750**

Cletrac K Parts Tractor **\$650**

(973) 751-1513

32 AUTOS



1994 GMC Surburban 2500 4W/D
Diesel A/T, All options and many extras,
Excellent condition, Inspected

\$16,750 O.B.O.

410/592-2245 410/893-3623

A LESSON WELL LEARNED...

32 AUTOS

EAGLE BROS. USED CARS

Lebanon, PA 717-228-0558



2000 Buick Regal LS, 3800 V6, 1,490 mi., green w/tan cloth int., remote entry, traction control, power windows & locks, power drivers seat, CD & cassette, hit on left side, needs rear clip & 2 doors, PA salvage title **\$5,600**

'99 Oldsmobile Intrigue GLS, 3500 twin cam V6, 24,000 mi., silver w/gray leather int., sunroof, loaded, hit on right side, PA salvage title, some parts available **\$5,200**

2000 Suzuki Esteem Wagon, dark blue w/gray int., 4 cyl., automatic, 25,000 mi., A/C, cassette, fold down rear seat, lots of cargo room, **READY TO DRIVE AWAY**, reconstructed **\$6,995**

'99 Ford Taurus SE, 24,000 mi. **\$5,500**

'98 Chevy Cavalier, 27,000 mi. **\$3,500**

'97 Pont. Sunfire, 52,000 mi. **\$3,500**

'95 Pont. Sunfire, 65,000 mi, w/parts **\$3,500**

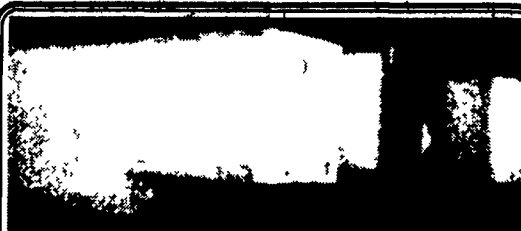
35 TRUCKS AND TRAILERS

1978 IH Stake Body

w/Hydraulic Lift Gate, excellent hay/straw truck.

\$3,800

Call **(610) 383-7042**



Trailers For Sale - 717-444-7371



1987 Ford L8000 with 16 foot silage bed, 32,000 GVW, 320B Cat engine, Allison automatic transmission

\$16,000

Richardton 700 dump wagon, 1 year old, excellent condition

\$9,000

814-793-4982



94 Freightliner Classic
3406C Cat 13 Speed, 895,000 Miles, New Clutch + Trans. **\$24,000**
1988 Utility Reefer
102-48-10 Ft. Spread, Air Ride **\$12,000**
1 (888) 982-4417



'97 Dodge Ram Truck 4x4,
4 Speed, Auto, Cruise-Air, ABS, PS, PDL, PW, Class 3 Tow Package, Running Boards, 46,000K, Sun Roof, Very Sharp
717/336-8452



92 Int. 9670 S/A, Airride, 290 Cummins, 9-Spd., OK \$2,800
800-839-3338



2520 Miles, Snow Blower, MF-3.7 Snow Plow, Excellent Cond. \$22,000
Call Tom 410/584-2732



1982 Seagrave 100 FT. Ladder Tk. Diesel A/T Excl. Cond. New Rear, Reman Trans. Tires 90% \$15,500
717-993-2263

Holiday Auto Sales

2017 Columbia Ave., Lancaster, PA

CHRISTMAS GIFT SPECIAL

Carter Go Carts!

2575-SX Affordable Double Seat Fun Was \$899 Now \$799

1136-ZX Millennium 6 HP - Limited Was \$1500 Now \$1,300

1746-TX Performance Was \$2000 Now \$1,800

Cosmo Comet 4-Wheelers ARE HERE NOW 50cc \$1,900 100cc \$2,400 Awesome Power & Quality For The Money

2226-ZX Millennium II Was \$1600 Now \$1,400

1746-TX Performance X2 Was \$2200 Now \$2,000

87 CHEVY K30 4x4, Power Angle Plow, 350 V-8, 4 Speed, 8' Dump Bed, 48,000 Miles

94 CHEVY K2500 4x4, Power Angle Plow, 350 V-8, Auto

STROBECK'S AUTO SALES
262 W. George St Yoe, PA **717-244-4282**

717-295-5583 0 Down Financing Available - MasterCard • Visa • Discover • American Express