

Year End Equipment Sale

S/DRILLS



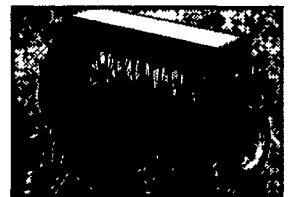
Conventional Drill,
Disc Openers,
Good Condition
WAS \$2,900 IS \$2,950



B 16662 Great Plains 15' Drill,
WAS \$5,400 IS \$3,800



5100 Folding 8RN
Air/Vacuum, NT, Cylidr
Fert, Row Markers,
540 PTO
WAS \$4,900

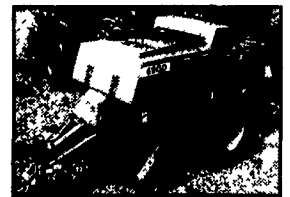


A 23119 GP End-Wheel NT 10' Drill,
7 x 16, 2" Press Wheels, 13" Double
Disc Openers, Rear Small Seed Attach,
14" NT Coulters
WAS \$13,800 IS \$12,900

FORAGE



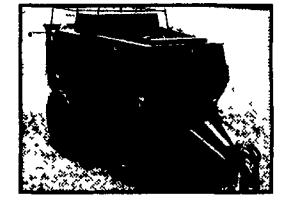
1480 12' Mower
r, Hydro-Swing
50 IS \$2,950



A 23165 Hesston 4900 Baler, 4' x4'
Bales, 30,000 Bales
WAS \$32,500 IS \$28,900



31 12' Disc Mower
r, Hydro-Swing
100 IS \$14,900

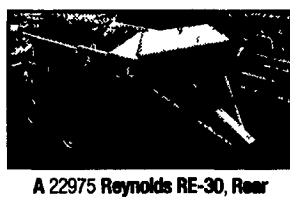


B 18906 1991 CIH 8580 Baler,
Makes 4x4x8, 60,635 Bales
WAS \$29,000 IS \$26,800

LANEANS

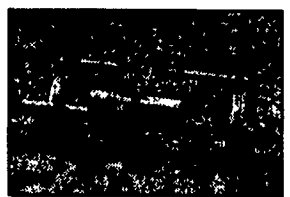


1840 Skidsteer
1000 IS \$10,900



A 22975 Reynolds RE-30, Rear
Ejector Wagon, 30 Ton, Loads 22 Cu
Yds of Mud, Soil, Rock, or Demo Mat
WAS \$63,500 IS \$61,800

TILLAGE



C 19130 Ferguson 10-12 Chisel Plow
WAS \$1,375 IS \$1,250



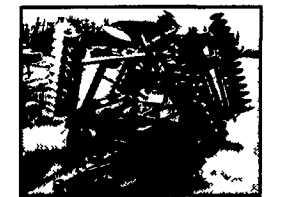
A 21540 DMI 530 Disc Attachment,
WAS \$2,250 IS \$1,550



B 19359 DMI 25' Folding Crumbler,
Good Condition
WAS \$4,500 IS \$3,950



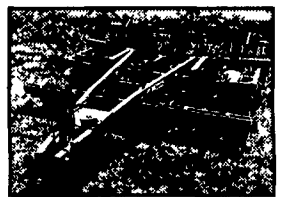
B 17326 Unverferth 29' Rolling
Basket, Has Wing Gauge Wheels,
Rear Jack
WAS \$5,500 IS \$4,400



B 19435 Krause 4918 27' Disc,
Standard Gang, Center & Wing Duals,
Packer Hitch & Hoses, New Blades
SALE PRICE \$9,900



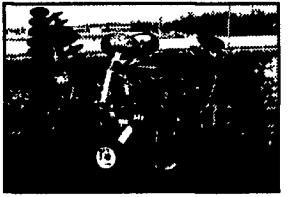
B 18976 IH 496 34' Folding Disc, 8"
Front & Rear Spacing, Duals on Ctr &
Wings, Forrow Firs, Pckr Hitch & Hoses
WAS \$10,500 IS \$8,600



B 22866 DMI 730 Eco-Tiger Chisel
Plow, 7 Shank, w/ Lead Shanks, Disc
Attachment, Rear Leveler,
WAS \$13,900 IS \$12,800



B 19636 DMI 530 Subsoller w/ Disc
Gangs on Front, Lead Shanks, Disc
Levelers on Rear, Field Ready
WAS \$17,500 IS \$17,000



B 19610 1998 Krause 4042WR 21'
Disc, Rockflex, 22" Blades, Packer
Hitch & Hoses, Excellent Condition
WAS \$19,000 IS \$16,800



B 22431 Krause 6331 31' Landstar,
Field Finisher w/ Star Wheels,
For High Residue Management
WAS \$24,500 IS \$21,800

TRACTORS



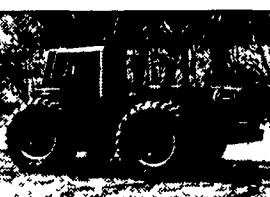
B 31108 Michigan 1250 9y Diesel
Payloader, Tires Front - 16 Dx24,
Rear - 16 Dx24, Wfe, 90" Bucket,
Shuttle Torque Conversion
WAS \$6,800 IS \$6,450



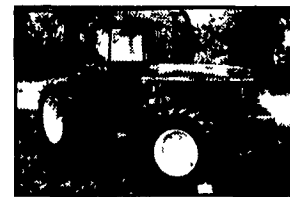
C 31975 1976 IH 464 2WD, 7800
Hours, Tires Front - 6 5 x 16, Rear -
14 9 x 28, 540 PTO, 3 Pt. Gear, 46 HP
SALE PRICE \$6,900



C 22860 1976 IH 1086 2WD Cab,
Diesel, 5020 Hours, Tires Front -
11 0x16, Rear - 20 8x38, 540/1000
Pto, 3 Pt, 2 Hyd Valves, 131 HP
WAS \$16,500 IS \$15,600



C 31092 1980 IH 3788 MFD Cab,
6627 Hours, Tires Front - 20 8x38,
Rear - 20 8 x 38, 1000 Pto, 3 Pt, T/A,
3 Hyd Valves, 170 HP
SALE PRICE \$16,900



A 22559 1983 JD 4850 MFD Cab,
5800 Hrs, 3 Pt, Quick Hitch, Tires
Front - 18 4x26, Rear - 20 8x38 Duals,
1000 Pto, 165 HP
WAS \$38,700 IS \$34,800



A 23004 1988 CIH 7120 2WD Cab,
4935 Hours, Power Shift, 540/1000
Pto, Tires Front - 14Lx16 1 - New,
Rear - 20 8x38, 3 Pt, 151 HP
WAS \$36,500 IS \$35,800



B 19890 1996 CIH 5230 MFD Cab,
1798 Hours, 3Pt, 540/1000 PTO
Tires Front - 12 4 x 24,
Rear - 18 4 x 34 Duals, 90 HP
WAS \$39,000 IS \$37,500



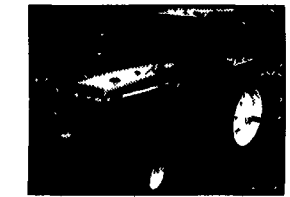
C 23186 1993 CIH 5250, 4500 Hours,
Tires Front - 14 9x24, Rear - 18 4x38,
3 Pt Hitch, 3 Hyd Valves, 112 HP
WAS \$38,900 IS \$37,900



B 19582 1991 CIH 7120 2WD Cab,
3093 Hours, Tires Rear 18 4x46,
540/1000 Pto, 3 Pt, Power Shift, 3 Hyd
Valves, Quick Hitch, Diesel 151 HP
WAS \$40,900 IS \$39,800



B 19583 1991 CIH 7120 2WD Cab,
2193 Hours, Tires Rear - 18 4x46,
Diesel, 540/1000 Pto, 3 Pt, Pwr Shift,
Quick Hitch, 3 Hyd Valves, 151 HP
WAS \$44,500 IS \$41,800



A 19589 1992 JD 4560 2WD, 2348
Hours, Tires Front - 14L x 16 1,
Rear - 18 4 x 46, 3 Pt, 3 Hyd Valves,
Diesel, Powershift, 156 HP
WAS \$47,500 IS \$45,800



B 19587 1992 JD 4560, 2WD Cab,
1807 Hours, Diesel, Tires
Front 14Lx16 1, Rear 18 4x46, 3Pt,
1000 Pto, 3 Hyd Valves, 156 HP
WAS \$52,000 IS \$48,500



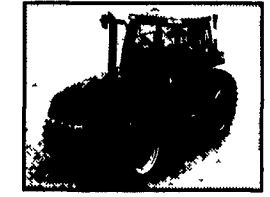
B 19586 1991 CIH 7140 MFD Cab,
3436 Hours, 3 Pt, 1000 PTO, Pwrshift,
3 Hyd Valves, Tires, Front - 16 9 x 30,
Steer - 18.4 x 46 197 HP
WAS \$56,000 IS \$53,800



B 18836 1995 CIH 7250 MFD Cab,
1815 Hrs, 3Pt, Quick Hitch/Tires Front
- 16 9x30, Rear - 20 8x42, 1000 Pto,
Pwr Shift, 215 HP
WAS \$77,000 IS \$73,800



B 19590 1996 JD 8400 MFD Cab,
2386 Hrs, Tires Front 16 9x30,
Rear 18 4x46 Duals, 1000 Pto, 3PT,
Power Shift, 3 Hyd Valves, 225 HP
WAS \$81,000 IS \$77,800



A 22784 1999 CIH MX200 MFD Cab,
550 Hours, 3 Hyd Valves,
Tires Front - 14 9x30,
Rear - 18 4x42, 540/1000 Pto, 165 HP
WAS \$91,800 IS \$86,500

RENTAL TRACTORS FOR SALE

LOC	TAG #	MODEL	PTO HP	HRS	REAR TIRES	HITCH	PTO	HYD VALVES
B	22821	CX 60 MFD CAB	50	537	16 9R 30 Singles	3 PT	540/1000	1
A	23079	CX 80 MFD ROPS	69	115	18 4R 30 Singles	3 PT	540/1000	2
A	21878	MX 100C MFD CAB	83	559	18 4R 30 Singles	3 PT	540/1000	2
A	23080	MX 110 2WD CAB	95	236	18 4R 38 Singles	3 PT	540/1000	2
A	22743	MX 120 MFD CAB	105	222	18 4 R 38 Singles	3PT	540/1000	2
A	23082	MX 120 MFD CAB	105	8	18 4 R 38 Singles	3PT	540/1000	2
A	23114	MX 120 MFD CAB	105	0	18 4 R 38 Singles	3PT	540/1000	2
A	23142	MX 120 MFD CAB	105	331	18 4 R 38 Singles	3PT	540/1000	2
A	22673	MX 135 MFD CAB	115	546	18 4R 38 Singles	3 PT	540/1000	3
C	21888	MX 150 MFD CAB	130	483	18 4R 42 Singles	3 PT	540/1000	3
A	22107	MX 170 2WD CAB	145	467*	18 4R 42 Singles	3 PT	540/1000	3
A	21899	8920 MFD	155	676*	18 4R 42 Singles	3 PT	540/1000	3
C	17230	MX 200 MFD	165	243	20 8R 42 Singles	3 PT	540/1000	3
B	17331	MX 220 MFD	185	741	18 4R 46 Duals	3 PT	540/1000	4
B	17595	MX 220 MFD	185	376	18 4R 46 Duals	3 PT	540/1000	3
C	22155	MX 240 MFD	205	413	20.8R 42 Duals	3 PT	1000	3

*Estimated hours - tractor still on rental

Call a Hooper Salesman Today for a Great Deal on One of These Tractors!

For a Complete List
of Hooper Inventory,
Visit Our Web Site.

WWW.
HOOPER.
COM

All New & Used
Products Backed
By Hooper Parts
& Service



CASE III