

FORKLIFTS

2,000 TO 15,000 LB.

\$2,000 & upwards

GAS/LP-DIESEL-ELECTRIC

Cushion-Pneumatic-Rough Terrain

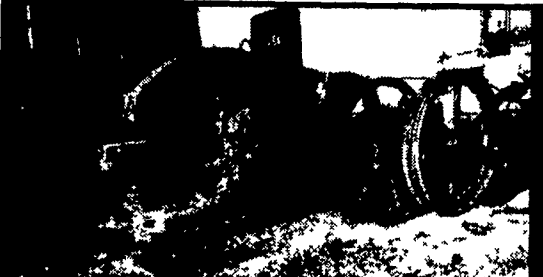
New Komatsu Forklifts Available

PA INDUSTRIAL EQUIPMENT

(610) 369-9778

- Cat 12 Grader 6 Cyl. Direct Start **\$4,500**
- Asplundh 6 Cyl Ford Gas, Runs Exc **\$4,250**
- Vermeer Stump Grinder Model 6, new 4 Cyl Wisconsin Eng **\$3,550**
- 14 Various Size Homelite Chain Saws **\$150 to \$500**

(973) 751-1513



SCRAP SHEAR, Run with Wisconsin Gas Engine - \$4,000 800-839-3338

SANDBLAST EQUIPMENT - AIR COMPRESSORS



AIR COMPRESSORS

- 200 Lb. Blast Pot With Hose and Nozzle..... \$600
- 300 Lb. Blast Pot With Hose and Nozzle..... \$700
- (2) 600 Lb. Blast Pot With Deadman, Rebuilt.. \$900 Ea.
- Gardner Denver 450 CFM Cummins..... \$5,000
- 1996 Leror 185 C.F.M. J.D. Diesel..... \$5,500
- Sullivan 185 C.F.M. J.D Diesel..... \$3,800
- Sullivan 125 C.F.M. Gas..... \$1,200
- Atlas Copco 175 C.F.M. Deutz..... \$2,500
- New 30 x 24 Blast Cabinet..... \$500
- 60 x 48 Blast Cabinet w/Reclaim/Dust Collector \$1,500
- 48 x 36 Blast Cabinet w/Reclaim/Dust Collector \$1,000

Always Buying Blast Equipment and Compressors

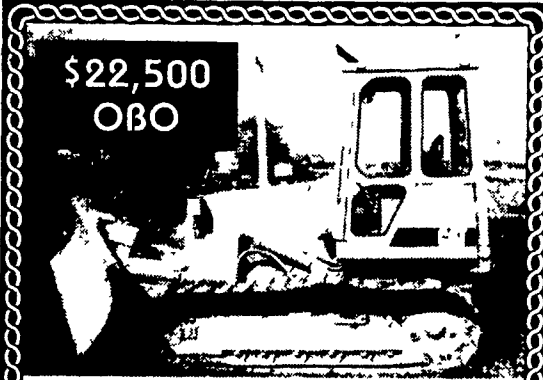
NEW AND USED Sandblasters,

Blast Cabinets, and Air Compressors

Repairs on Air Compressors & Sand Blast Equipment - Trade-ins Welcome

Titan Abrasive Systems, Inc.

570/648-4774



\$22,500 OBO

'88 Cat D3C LGP, C/A/H, 90% U/C, 6150 Hrs., Fresh Paint, Very Good Condition

610-683-5688



1A CONSTRUCTION EQUIPMENT

Equipment

CHALK

Sales -150 Forklifts In Stock



410-686-6800 BALTIMORE, MD

1971 CAT D4D DOZER

10' man. angle blade, 70%+ U/C remaining, 4827 hrs., open top-no ROPS, very good, solid machine, Asking **\$11,900.** Lycoming Co., PA.

570-398-0829

if no answer leave name & number on machine.

- #7452 Kubota L5450 Tractor Loader, 4WD, Exc Cond. **\$18,900**
- #7420 Case 580K Loader Backhoe, 1988, 4WD, Cab, Ext. Hoe 2780 Hrs **\$23,900**
- #7404 Case 580D Loader Backhoe, 1982, 2WD, Ext. Hoe, Hammer Hyd, 7400 Hrs **\$11,900**
- #7393 Case 850C Crawler Loader, 1983, New UC, Rebuilt Bucket **\$20,900**
- #7392 Case 580 SE Loader Backhoe, 1987, 4WD, Cab, Standard **\$18,500**
- #7389 Int'l 270 Loader Backhoe, 1980, 2WD Cab Standard, 4,000 Hrs. **\$8,500**
- #7364 Case 95XT Unloader, 1997, Cab w/Heat, Hyd Coupler, 82" Bucket, 1550 Hrs **\$27,900**
- #7362 JD 410 Loader Backhoe, 1978, 2WD, Canopy, Standard, 3100 Hrs **\$12,900**
- #7366 JD 310 Loader Backhoe, 2WD, Canopy, 14' Hoe, Excellent Cond, 2840 Hrs **\$10,900**
- #7269 Case 680K Loader Backhoe, 1987, 2WD, Cab, Ext. Hoe, 5900 Hrs **\$15,900**
- #7265 Case 580K Loader Backhoe, 1990, 4WD, Canopy, Ext. Hoe, 4900 Hrs. **\$22,500**
- #7078 Case 450 Crawler Dozer, u/c Good, 5,000 Hrs **\$14,500**
- #7015 Case 570XLT Loader, 1995, 4WD, Cab, 3 pt., 2,500 Hrs..... **\$25,000**
- #6814 Vibromax 252 Roller, Dual Drum **\$12,000**
- #6678 Case 1840 Unloader, 1994, Aux Hyd Drt. Bkt., 1,718 Hrs..... **\$11,900**
- #6796 Case 1840 Unloader, 1996, Aux Hyd. Drt. Bkt., 2,660 Hrs..... **\$12,900**
- #5182 Case 1845C Unloader, 1989, Aux Hyd., UT Bkt., 2,500 Hrs..... **\$12,500**

Vernon E. Stup Co.

5859 Urbana Pike, Frederick, MD 21701

301-663-3185

NEW ADDITIONS



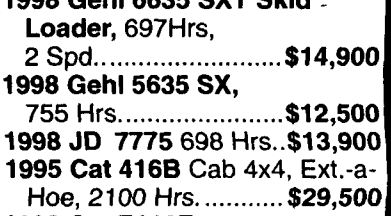
94 Case 9020 Excavator, 35,000 Lbs. \$35,000



85 Cat D3B, Good UC \$15,900



89 JD 590D \$32,500



1998 Gehl 6635 SXT Skid Loader, 697Hrs, 2 Spd. \$14,900



90 Cat 953 LGP, Good UC, Very Clean \$42,000



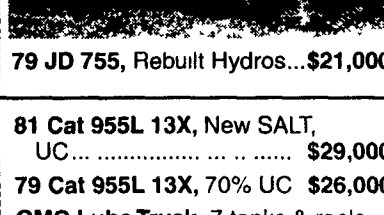
1998 Gehl 5635 SX, 755 Hrs. \$12,500



95 Liebherr 621C, 5900 Hrs., Excel. U/C \$39,000



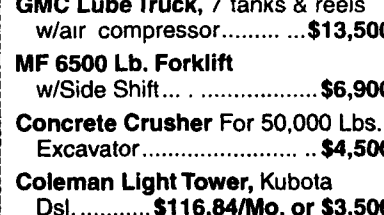
1998 JD 7775 698 Hrs. \$13,900



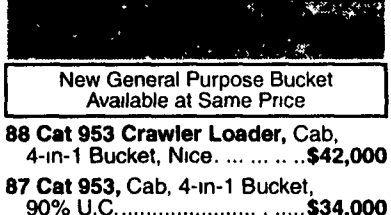
79 JD 755, Rebuilt Hydros \$21,000



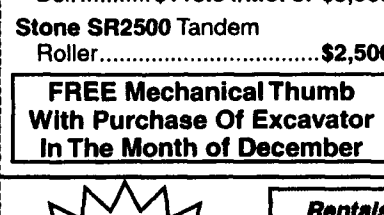
1995 Cat 416B Cab 4x4, Ext.-a-Hoe, 2100 Hrs. \$29,500



81 Cat 955L 13X, New SALT, UC \$29,000

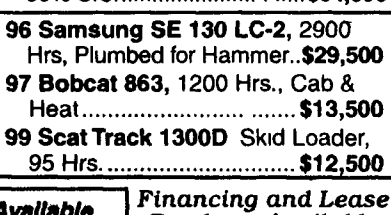


79 Cat 955L 13X, 70% UC \$26,000



88 Cat 953 Crawler Loader, Cab, 4-in-1 Bucket, Nice \$42,000

FREE Mechanical Thumb With Purchase Of Excavator In The Month of December



87 Cat 953, Cab, 4-in-1 Bucket, 90% U.C. \$34,000

96 Samsung SE 130 LC-2, 2900 Hrs, Plumbed for Hammer. \$29,500

JERRE MARTIN REPAIR

391 N. Farmersville Rd., Ephrata, PA 17522 (Just minutes off RT 222)

(717) 859-3283

Sales Service

Rentals Repairs



JD 644C Loader, Choice of 2 \$25,000



'94 JD 644G \$55,000

Machines Listed For Sale Are Also For Rent



JD 482C Forklift 4x4 \$20,500



JD 544B Loader \$19,000

Financing Available

WE ARE BUYERS FOR LATE MODEL CONSTRUCTION EQUIPMENT NEEDING REPAIRS

- Case W14 wheel loader, needs brakes..... \$5,500
- Case 455C crawler loader w/ripper..... \$18,000
- Case 1840, foot controls..... \$8,000
- Case 1845C..... \$8,500
- '93 Case 9020 excavator..... \$35,000
- '87 Cat D4H 6-way, choice of 2..... \$30,000
- '93 Cat 312 excavator..... \$32,000
- '81 Cat 943..... \$27,500
- '81 Cat 953 crawler loader, 75% U/C OROPS..... \$34,000
- '86 Cat 953 crawler loader, cleaned & painted..... \$37,000
- '90 Cat 953 crawler loader, EROPS, New U/C..... \$47,000
- Cat 955K, 85J Series, rebuilt motor U/C 50%..... \$15,000
- Cat 955L crawler loader, new U/C..... \$24,000
- Cat 955H crawler loader, Pedal Steer..... \$9,500
- '90 Cat 963 crawler loader, OROPS, good cond..... \$58,000
- '95 Cat 939, good cond..... \$38,000
- '94 Cat 963..... \$65,000
- '85 JD 350C..... \$13,500
- '89 JD 450G, 6 way..... \$28,000
- JD 450G crawler w/6 way blade..... \$29,000
- '89 JD 455G crawler loader, cleaned & painted..... \$28,000
- '84 JD 510B, backhoe std..... \$13,000
- JD 544A wheel loader..... \$11,500
- '90 JD 544E wheel loader, JRB coupler..... \$42,000
- '98 JD 544H wheel loader w/JRB coupler, bkt & forks..... \$80,000
- '90 JD 555G, excellent..... Choice of (2) \$28,000
- JD 644B wheel loader..... Choice of (2) \$20,000
- JD 644C wheel loader, extra high lift w/quick coupler, good cond..... \$30,000
- '93 JCB 214 4x4 Ext. Hoe..... \$20,000
- NH 785 skid loader, rebuilt motor, new paint..... \$10,500
- Assortment of thumbs for excavators, starting at..... \$1,000
- Available: Rebuilt exchange motor for Cat 953..... \$5,000/Exchange

Rentals Available Day, Week, or Month

Financing and Lease Purchase Available No Sunday Calls

Weaco Equipment

Ask for Jay Weaver

Reinholds, PA 717/336-7375

Above payments are with approved credit for 60 months no penalty for early payoff 0% Down 2 Payments Due Immediately Trades welcome