

Ramstone Farm Equipment
Walkersville, MD
(301) 898-7426

IH 574 Dsl. w/Loader, 3 Pt., 52 HP, Ex.....	\$5,500
NI 705 Uni 743-3x30" Picker, 737 Husker, 2600 Hrs.....	\$7,500
NH 55 Hay Rake/Dolly Wheels, Ex.....	\$1,250
IH 510 Grain Drill 24 Hoe D.D.....	\$1,500
Woods 121 Bush Hog 10'.....	\$2,000
NH 155 Hay Elevator, 30'.....	\$450
Killbro 300 Bu. Gravity Flow Corn Wagon.....	\$750
IH 700 Plow 5x16 Auto Reset.....	\$800
JD 234 Corn Head 2x38" off 45, Combine.....	\$200
IH 470 Disc, 20 ft. Foldup.....	\$1,500
White 543 6x30" Corn Planter, Dry Fert., Monitor.....	\$1,200
NH Super 717 Pickup Head & 2R 30" Corn Head.....	\$1,500
Brady Chisel Plow, 3 Pt, 8 Shanks.....	\$800
New Chain for NH 853 Baler.....	\$300
Woods 3 Pt, Ditch Bank Mower.....	\$1,000
'95 Ford F250 4x4, Auto. Trailer Towing Pkg., 1 Owner, MD Inspected.....	\$14,000

visit our website:
www.geocities.com/ramstone_farms

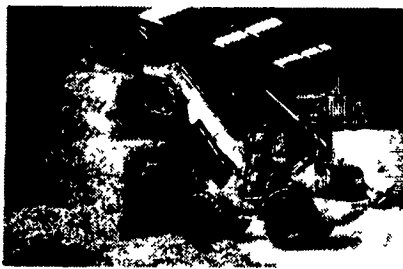
Kramer Allrad

COMPACT LOADERS



All-Wheel Drive All-Wheel Steer

- Superior turning radius
- German engineered
- 75 years in the field
- 11 models:
- 29 to 100 hp
- Buckets .5 to 2.6 cu. yds.
- Telescopic loading arms available



Established 1890

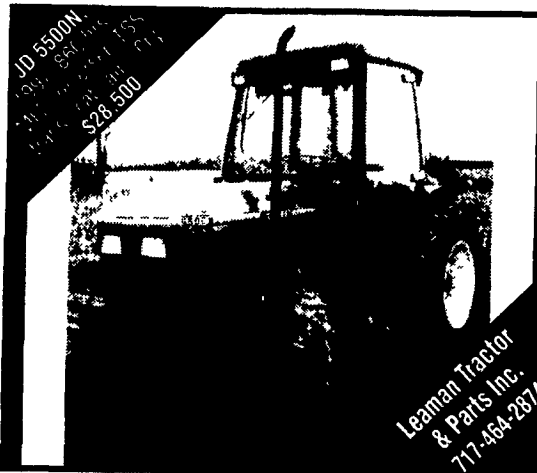
A. L. HERR & BRO.
Park Ave., Quarryville, PA 17566
(717) 786-3521

We Ship Parts U.P.S.

kubotaparts.com

DISCOUNTED PRICES ON KUBOTA PARTS

Look Us Up At kubotaparts.com or call toll free at **1-877-4KUBOTA**



Leaman Tractor & Parts Inc.
717-464-2874



Making A Difference In The Long Run.

Wait! Don't put that equipment out back...

Renew it with Genuine AGCO parts!
REPLACEMENT ENGINES IN STOCK!

4 Cyl. SAME, 69 HP, AGCO PT# 7226 0829 Application: AGCO-Allis 6670	\$3,500 \$3,500
4 Cyl. Turbo SAME, 128 HP, AGCO PT# 7226 0629 Application: AGCO-Allis 7650	\$7,400
3 Cyl. SAME, 58 HP, AGCO PT# 7226-0828 Application: AGCO-Allis 5650, 5660	\$2,875
4 Cyl. SAME, Water-Cooled, 69 HP, AGCO PT# 7226-0830, Application: AGCO-Allis 6D65	\$3,725
6 Cyl. SAME, Water-Cooled, 108 HP, AGCO PT# 7226-0819, Application: AGCO-Allis 6105	\$6,095
6 Cyl. Turbo, Massey Ferguson, 200 HP, AGCO PT# 3713036M1, Application: MF 8160	\$13,225
3 Cyl. ISEKI, 20 HP, AGCO PT# 3710104M91 Application: MF 1220 Mechanical Trans.	\$3,000 \$3,000
4 Cyl. IVECO, 50 HP, AGCO PT# 700705622 Application: Hesston 8200 Windrower	\$4,130
4 Cyl. Volkswagen Gasoline, 50 HP, AGCO PT# 663 0317 Application: Spray-Coupe	\$3,850
4 Cyl. Turbo Perkins, 79 HP, AGCO PT# 666 7925 Application: Spray-Coupe	\$4,350

POWER UNITS

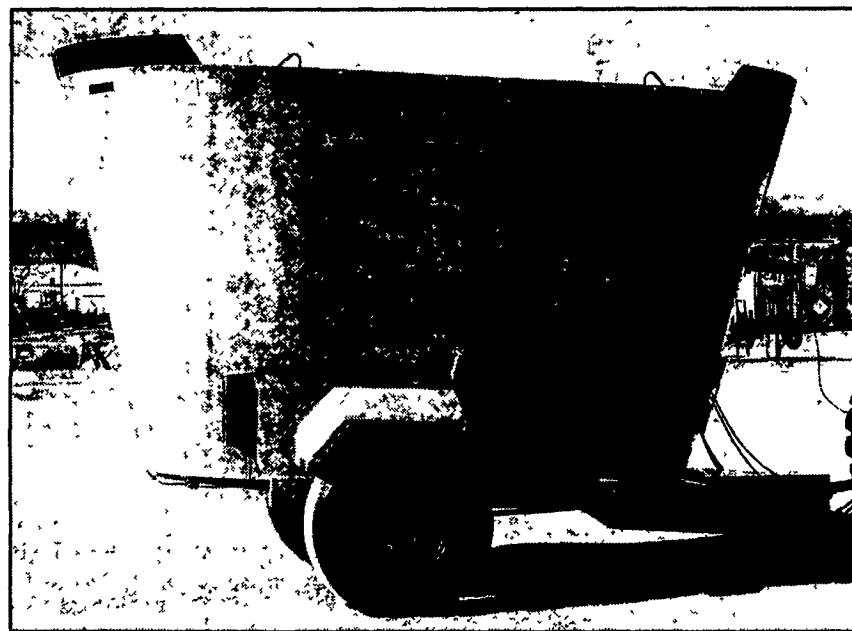
4 Cyl. Deutz F4L912 @ 66 HP, AGCO PT# 700714427 Application: Many Models of Deutz Tractors Hesston 4690 Baler, Stationary Power Unit	\$6,425
4 Cyl. Turbo SAME, 1054 Pt @ 88 HP, AGCO PT# 7901 5938 Application: AGCO Irrigation Unit & Stationary Power	\$4,995

DECEMBER SPECIAL!
All V-Belts In Stock 15% OFF!
Oil Filters by Case Quantity 10% OFF!



Holtry's Equipment
10948 Roxbury Rd • Roxbury, PA 17251
(717) 532-7261

AGCO® FILTERS



KNIGHT

Verti-Maxx Mixers

Introducing Models 5042 and 5060
420 and 600 cubic feet
Trailer and Truck Applications

The new Knight Verti-Maxx is the most innovative vertical mixer ever built. Its exclusive design features a simpler drive system, a lower loading height, and delivers a more consistent, thorough mix with faster processing time, all at a competitive price. The Verti-Maxx twin augers and bull gear drive* provide the best performance, dependability and value in the industry, day in and day out.

Check out these features and benefits:

- The Verti-Maxx vertical mixer mixes the widest variety of feedstuffs, including large round bales, large square bales, and baleage.
- Twin augers provide faster material movement and a thorough mixing action.
- Twin auger design also provides a lower loading height for easier loading.
- The bull gear drive (BGD)* is a simple, more dependable drive.
- The side delivery door with 3-auger chute provides a faster, more even discharge.

*patent pending

CFS...your Exclusive Verti-Maxx Dealers

Knight Verti-Maxx Field Day
10:00 AM on Tuesday, December 19th
Para-Dice Farms...Call for Directions 717-264-3533

Chambersburg Farm Service, Inc.
717-264-3533 or 800-447-6830

Carlisle Farm Service
717-243-4419 or 800-447-6829

World-Wide Leader in TMR Mixers