

### TIRE SALE

- Used Truck Tires.....As Low As \$50
- Good Selection in Most Sizes.
- New Trailer Retreads Size 11R22.5 or 11R24.5.....\$125
- Eliminate the Middleman! Buy Direct from our Retread Shop and Save \$\$!
- Good Supply of Retreads In Stock or we can Custom Retread your Tires to meet your Hauling Needs.
- Our Family Business Has Been Retreading Tires for 35 Years.

*We Know How To Do It Right!*



**WEAVER'S  
TIRE SERVICE**  
Ephrata, PA  
**717/733-8775**

1992 Ford L8000, 5-Spd. - 2 Spd. Rear, 2,500 gal. tank, 92,000 mi., Excellent condition. \$40,000  
**610/826-4381**

### LEED TRUCK CENTER

402 South Chiques Rd Salunga Exit, Route 283 **717-898-1200**



1994 IHC 8100, Single Axle NTC 280 HP P/S A/C, Fresh Eng Overhaul, 84" Ca New Insp Very Clean Only \$16,000

1992 GMC Topkick, 3116 Cat 195 Hp, 5 Spd, P/S, Hyd Brakes, Non CDL, 20,600 GVW 20' Insulated Body A/C in Cab & Body, Insp. Clean Only \$6,900



1989 Chevrolet Kodiak, 3208 Cat HP 5 & 2 Spd, P/S A/B, A/C, 33,000 GVW, 20' C&C Good Tires Clean New Clutch & Insp, Super Clean Only \$10,500

1989 Fruehauf, 45' Platform Trailer, Wide Spread On Air, Insp, Very Clean \$6,900

## TRAILER ENTERPRISES, INC.

ON SITE - FULL SERVICE HITCH & REPAIR FACILITY. MAKING SURE YOU GET THE BEST IN THE INDUSTRY!

- X GOOSENECK FLATBEDS
- X CARGO TRAILERS
- X AUTO CARRIERS
- X LAWN SERVICE & UTILITY
- X INDUSTRIAL & EQUIPMENT

• HOURS •  
Monday - Friday 8 to 5; Saturday 9 to 12

"REVVIN' TO TAKE CARE OF ALL YOUR TRAILER NEEDS"

2 HORSE PULL TYPE W/ALUMINUM SKIN AND DRESSING ROOM \$7,150

MORITZ CBS 6 X 13 STOCK TRAILER \$3,150

20' X 7' MAVERICK MODEL GOOSENECK (SHOWN W/OPT. HUB CAPS)

MORITZ 3 HORSE STOCK GOOSENECK W/ DRESSING ROOM \$8,200

**EBY**

*TRAILERS ARE OUR BUSINESS!*

### FOR SALE



**Heavy Duty 4x4**  
95 FORD F250, Fuel Injection, 351 V8, AT, A/C, Vinyl Seat & Floor, Very Clean & Runs Great, Great Truck Around The Farm!  
**\$13,900**



**Heavy Chevy**  
93 CHEVY K2500 4x4, High Output, 6.5 Turbo Diesel, AT, A/C, Tow Pkg., Heavy Duty 8600 GVW, Local Trade, Runs Well  
**\$12,900**

**Car Village, Lebanon**  
**1-800-650-1420**

PH. 717-866-5237

**AUTO**

Hours: Mon-Fri 9 AM - 6 PM



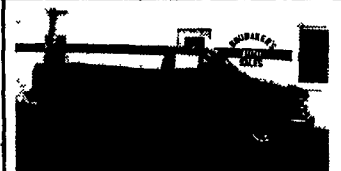
99 FORD WINDSTAR SE Black, 3.8 V6, AT, AM-FM Cas, PW, PL, CC, Tilt, Dual-AC, Pwr-Seat, Keyless Entry, 50,575 Mi **\$15,900**



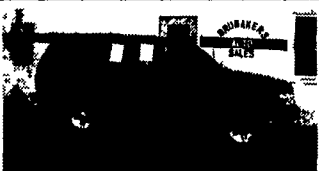
99 JEEP GRAND CHEROKEE LAREDO 4x4, Maroon, 4.0 6 CI AT, AC, PW, PL, CC, Tilt, Keyless Entry, AM/FM/Cass/CD, 51,620 Mi **\$17,900**



98 DODGE RAM 1500 Cargo Van, White, V6, AT, AM-FM ST, AC, Tilt, 76,765 Mi **\$10,800**



98 CHEVY 1500 CHEYENNE 2WD, Blue, V6, AT, AM-FM Cas, AC, CC, Tilt, 47,055 Mi.. **\$12,900**



97 FORD EXPLORER SPORT 4x4, Black, V6, AT, AM-FM Cas, AC, PW, PL, CC, Tilt, 58,000 Mi **\$11,800**



97 CHRYSLER TOWN & COUNTRY LXI Purple, 3.8 V6, AT, AM-FM Cas, PW, PL, CC Dual-AC, Leather, CD, Pwr Seats, Keyless, Quad Seats, 47,275 Mi **\$14,900**



94 CHEVY SPORT VAN 12 Pass, Black, 350 V8, AT, Dual AC & Heat, 75,272 Mi **\$8,600**



00 CHEVY ASTRO LS Green/Gray V6, AT, AM-FM Cas, AC, PW, PL, CC, Tilt, Keyless-Entry, 32,545 Mi **\$15,600**

## USED EQUIPMENT

### LIVESTOCK BODIES

- 12'x96"x6'9" Eby
- 14'x96"x6'3" Eby
- 9'x94"x6'9" Eby
- 10'x92"x6'6" Eby Deck Rail & Winch
- 10'x96"x6'6" Eby

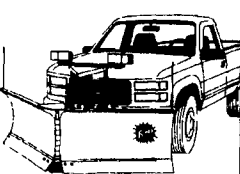
*Above Bodies Would Make Great Poultry Bodies*

### TRAILERS

- 1989 Featherlite 20'x7'x6'6" Alum. Gooseneck
- (2) 1998 Eby 28'x102"x6'6" Alum. Gooseneck
- 1988 Ponderosa 14'x6'x6'6" Steel Gooseneck
- 1994 Eby 20'x7'6"x6'9" Alum. Gooseneck

### M.H. EBY, INC.

1194 Main St. (Route 23)  
Blue Ball, PA 17506  
(717) 354-4971  
(800) 292-4752  
4435 State Route 29  
West Jefferson, OH 43162  
(614) 879-6901  
(800) 752-0507



### THREE PLOWS IN ONE!

Break through deep drifts in the "V" position or carry and stack in the "scoop" mode or use this 8 1/2' plow in the straight or angled position for conventional plowing. All blade functions are right in the palm of your hand with the hand-held FISH-STIK™ control. The Minute Mount System® for easy on/off, trip-edge blade and double acting cylinders, all make the EZ-V plow the ultimate plow for the professional plower.

**E.M. KUTZ, INC.**  
WHITEHALL, PA READING, PA  
800-974-9779 610-775-3528

### FLATBED BODIES

Lengths to 32', choice of 5 widths.

### GRAIN BODIES

Lengths to 24', landscape and general purpose dumps to 12'.

### LANDSCAPE BODIES

Lengths to 12'. We'll build to your specs!



**IN ALUMINUM BODIES EBY BUILDS IT**

**Blue Ball, PA  
800-292-4752**