

32 MISCELLANEOUS

CNC Mill: DoAll CNC1000, 35"Xx20"Yx 8"Z plus rotary table, 5 HP spindle. Purchased new in 1980, now has 2092 hours on the meter... **\$7,000**

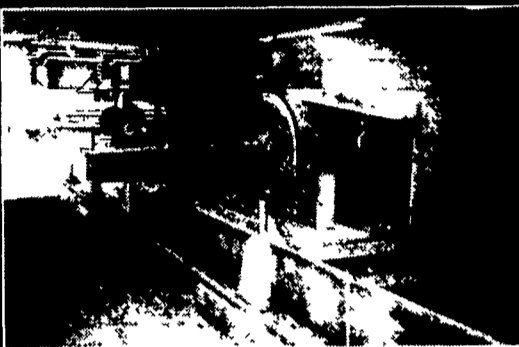
CNC Lathe: LeBlond 19" Tape-Turn Regal, 19" swing x 54" between centers, 3 1/16 through hole in spindle, 10 HP. Purchased new in 1981, now has 1119 hours on the meter **\$5,000**

LeBlond manual engine lathe. 30" swing x 120" between centers, 10 HP, equipped with two 4-jaw chucks, faceplate, steady rest, and taper attachment..... **\$250**

Detailed specifications for the CNC machines are available.

Any of them can be seen under power

**Call Dave Bowlby
717-626-5221**



CLARY COMPONENT SAW

4 blades cut at once. All 4 cutting heads can be set at angles from 0-90 degrees. Chain driven material feed. Heads can be adjusted to cut material up to 23' in length.

\$2,500

See at 245 Fetterville Rd., East Earl, PA 17519

Call for directions **717-354-7561**

CHAPMAN FORD LINCOLN MERCURY NISSAN
CHAPMAN AUTO GROUP
 20th & Cumberland Sts.
 Rt. 422 West
 9-9 Daily 9-5 Sat



97 FORD F150 SUPER CAB
 Lariat, 5.4L V8, AT, A/C, 2WD, Most Options, 25,000 Miles, Black, #P4474
\$20,998



2000 NISSAN X-TERRA
 4x4, Loaded \$23,995



98 FORD EXPEDITION XLT
 Rear A/C, 3rd Seat, CD Changer, 17" Wheels, Running Boards, Perfect Family SUV



99 FORD F350 CREW CAB
 Powerstroke Diesel
 \$25,995



99 FORD F150 XLT
 "Flair Side" 4x4 #P4584



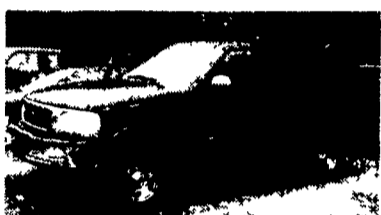
2000 DODGE RAM 1500
 AT, V8, 21,000 Orig. Miles, One Owner \$14,995



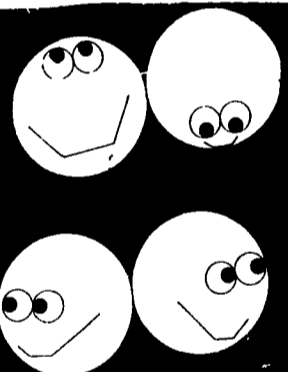
95 NISSAN QUEST
 "Loaded" #980A
\$9,995



99 FORD WINDSTAR LX
 Loaded, TV, Nintendo, Only 44,000 Miles



97 FORD EXPEDITION XLT
 4x4, Low Miles



DON'T LOOK ANY FURTHER!
 YOU'LL FIND IT IN LANCASTER FARMING'S CLASSIFIEDS

- Generator set, 15 Kw Kohler, Waukesha Eng, propane, 3 Ph 120/208 Volts... **\$2,200**
- Generator set, 25 Kw Kohler, Hercules Eng. Gas, 3 Ph 120/230 Volts... **\$2,800**
- Generator set, 50 Kw Hol-Gar, Gas, 3 Ph 240/480 Volts, on trailer... **\$2,500**
- Generator, 150 Kw, 3 Ph 2-Bearing... **\$1,200**
- Lighting unit, 2 Kw, Gas, Portable... **\$1,100**
- Lighting unit, 1 Cyl Diesel, 2 lights, portable... **\$1,300**
- Abrasive wide belt sander, Sanding Master, 48" double belt... **\$5,500**
- Air Compressor, Worthington, 40 Hp Electric, complete... **\$1,800**
- Air Compressor, Speed Aire, 2-10 Hp units on tank, 3 Ph... **\$1,800**
- Jig Bore, Fosdick Sn 2222124, digital readout, NICE!... **\$5,000**
- Press, 150 ton, Hydraulic, 4'x8' Plywood Press... **\$2,800**
- Roller, Walk behind, Hatz Diesel, Vibrator... **\$2,500**
- Crane Magnet, 42"... **\$1,200**
- Crane Scales, 10,000#, Digital... **\$650**
- Loader, 175 Michigan, GM Diesel, Runs and Operates... **\$3,500**
- Forklift, 15,000# Yale, Air Tires, Propane... **\$3,500**
- Concrete Saw, 16" Diamond blade, gas powered, w/water attachment... **\$1,600**
- Solid rubber tires for Ford Tractor, complete set... **\$400**
- White cedar shingles, 5/8" (15 Sq)... **\$100/Square**

717/354-3105

31 NOTICE

CUT YOUR TAXES NOW BEFORE IT'S TOO LATE!!

Lease/Purchase Your Equipment

- New Or Used
- Customized Terms
- Tax-deductible payments
- Preserve bank lines for working capital
- Low or NO DOWN PAYMENT (usually 1 or 2 months, use trades as payments)

Call us and start cutting your taxes today!!



contact Jennifer
 1-800-743-3009

Business Lease Consultants, Inc.

BUY, SELL, TRADE OR RENT THROUGH THE
CLASSIFIED ADS
 PHONE 717 626-1164 or 717 394-3047
 FAX 717 733-6058
 Mon. Tues. Wed. Fri 8 AM to 5 PM, Thurs 7 AM to 5 PM

32A ANTIQUES

- Oliver OC-6 Gas, 3 Pth, Runs & Operates Well... **\$4,950**
 - Oliver OC 6, Gas, Wide Track... **\$3,000**
 - Oliver OC-6 Diesel... **\$3,500**
 (Will Run, Needs Pump Work)
 - JD "H" Restored, New Tires, Hand Start... **\$3,500**
 - IH F-12 Steel Rears, Rubber Tire In Front, Restored... **\$2,250**
 - IH F-20, New Tires, Runs Good... **\$1,950**
 - AC Model CA With Dirt Plow... **\$2,500**
 - Ford 8N, 6 Cyl. Engine... **\$4,000**
 - Cockshut Model 30 Tractor, Restored... **\$4,250**
 - JD Model 420, Three Point, PTO... **\$2,650**
 - Massey Harris Pony Tractor with Dirt Plow... **\$2,000**
 - Fordson Steel Wheel Tractor, Restored... **\$1,850**
 - (2) International Cub Cadet Tractors... **\$500 Each**
 - Oliver BG Dozer, 6 Cyl., Gas, Runs Good... **\$4,250**
 - Cletrac Unstyled E Runs & Operates... **\$3,750**
 - Cletrac Styled E Complete, Runs... **\$2,000**
 - Cletrac Styled Parts, Motor Free... **\$750**
 - Cletrac W Parts Tractor... **\$750**
 - Cletrac K Parts Tractor... **\$650**
- (973) 751-1513**

A LESSON WELL LEARNED... LANCASTER FARMING'S CLASSIFIED ADS GET RESULTS!

33 RECREATIONAL VEHICLES

88 Terry Manor Deluxe Unit, All the Extras
 35-1/2 ft., 2 furnaces, air, lots of storage, water filtration system, nice clean unit.



83 Ford Conversion, 460 Ford, auto, air, p/s, p/b, all rebuilt a couple of years ago.

**Both Units \$10,500 OBO
 717-786-1771**

32 AUTOS



1998 Ford Expedition XLT
 V8, PW/Locks, Aux. AC/HT, 3rd Seat, CD/Cas, Fog Lts., H'd Mirrors, Blk Htr., Tow Pkg., Wedgewood Blue, 24,000 Miles. Beach or Snow, It's Ready To Go!
**\$27,900 O.B.O.
 (610) 374-8401**

35 TRUCKS AND TRAILERS



**1991 GMC TOPKICK
 18 Ft. DUMP TRUCK
 CAT Diesel, 6-Speed, 32,000 GVW
 \$15,900
 717-336-3130**