

# J.L. HOLLINGER & SONS

Construction Equipment Sales  
Manheim, PA 17545

**717-664-2444**

717-664-2637 after 6 p.m.

**Rentals  
and  
Delivery  
Available**



'94 Cat V50E Forklift  
Dsl, 5000 Lb. Air Tires,  
Side Shift



'94 JD 544G  
EROPS, Air, Third Valve,  
New Rubber



'94 Cat 933  
Crawler/Loader  
Cab, Heat, 4-in-1 Bucket



'96 Cat GP25 Forklift  
5,000 Lb. Cap., Dual Fuel,  
Low Hrs.



'89 John Deere  
Crawler/Loader  
w/Backhoe Att., Very Good



'76 Komatsu D65-16  
Crawler/Loader  
GP Bucket, ROPS



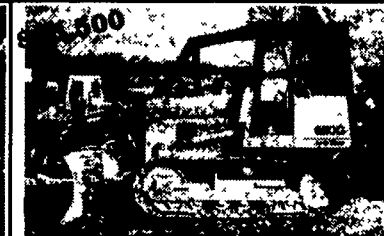
'96 Ford 655D Turbo  
4x4, EROPS, Ext. Hoe,  
Very Good Cond.



'94 Case 590 Turbo  
4x4 Cab, Air, Ext. Hoe,  
Low Hrs.



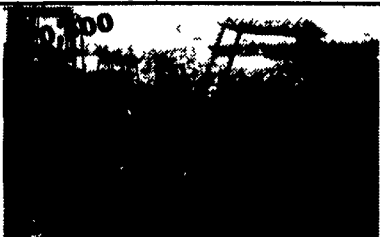
'93 Komatsu D37-P-5  
W.T. 6-Way Command Steering,  
Very Good



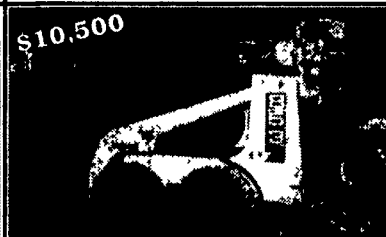
'96 Case 650G  
6-Way, 2800 Hrs.,  
Rental Return, Very Good



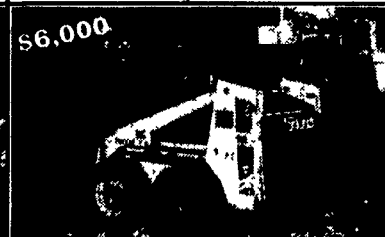
'95 Yanmar B-22  
ROPS, Rubber Tracks,  
Aux. Hyd.



'98 Takeuchi TB20  
ROPS, Rubber Tracks,  
Front Blade, Low Hrs.



'96 Bobcat 853  
S.S. Dsl. Aux. Hyd., 12x16.5  
Rubber Bucket w/Teeth, Low Hrs.



'87 Bobcat 743 Skid Steer  
Kubota Dsl., Aux. Hyd.,  
Q-Tach Bucket



'95 Gehl 5635 DXT  
Skid Loader, Aux. Hyd.  
w/High Flow System



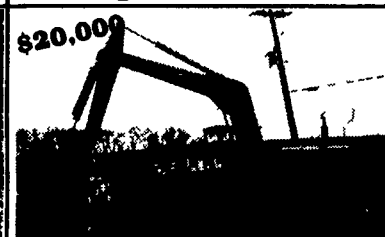
'97 Terramite T5C  
2WD, ROPS, Power Steering,  
Low Hrs.



'96 Case 621B  
EROPS, Air, G.P. Bucket,  
Coupler, 3rd Valve



'85 Case 580 Super E  
2WD, Cab, Ext. Hoe,  
Very Good



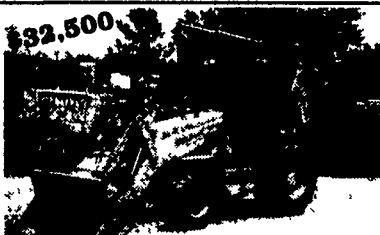
'78 John Deere 690B  
Hyd. Excavator, 3rd Valve  
w/Kent Hyd. Hammer & Bucket



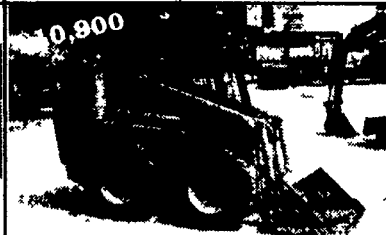
'98 Fiat Allis FD255  
EROPS w/Air Semi, V. Blade,  
Very Good



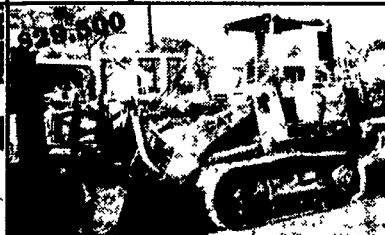
'94 Case 580 Super K  
4x4, EROPS, Standard Hoe,  
24" Bucket



'96 Case 580 Super L  
4x4, Ext. Hoe, 24" Bucket,  
Very Good Cond.



'94 Case 1840  
Dsl. Aux. Hyd., Coupler,  
Low Hrs.



'86 Cat 943 LGP  
ROPS, GP Bucket



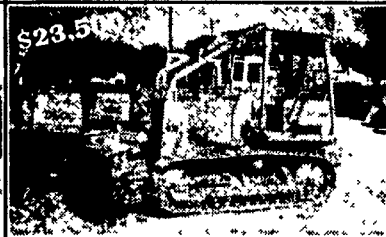
'86 Cat 980C  
EROPS, GP Bucket, B.O.C.E.  
L5 Rubber @ 60%



'86 Case 450C  
6-Way Blade,  
Very Good



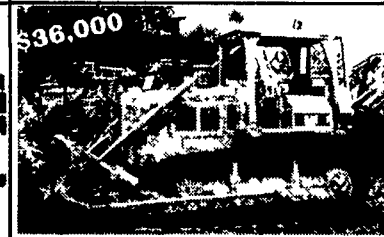
'87 Cat D25C  
Haul Truck, Good Cond.,  
25 Ton



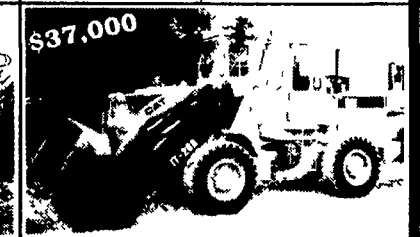
'85 Cat D3B LT Custom 75  
6-Way Blade w/Winch,  
Very Good



'89 John Deere 643  
Feller Buncher w/Shear Head.  
Rebuilt Engine, Tires @ 90%  
w/Chains, V. Good



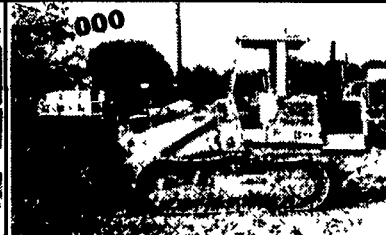
'80 Cat D6D  
ROPS, S/T Blade,  
Very Good Cond.



'88 Cat IT28B  
Cab, Coupler, GP Bucket



'88 Cat 963 LGP  
EROPS, GP Bucket,  
Very Good Cond.



'86 Cat 953 LGP  
ROPS, GP Bucket,  
Good Undercarriage



'93 Cat 953B LGP  
Cab, GP Bucket,  
New Track Groups



'97 Gradall 534C-6  
36' Shooting Boom, FL 6,000  
Lbs. Cummins Diesel



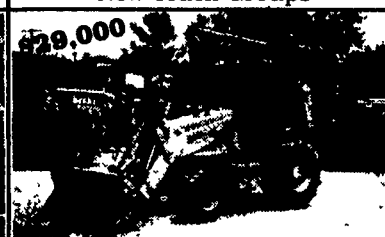
'94 Case 821B  
EROPS, GP Bucket,  
3rd Valve, Very Good



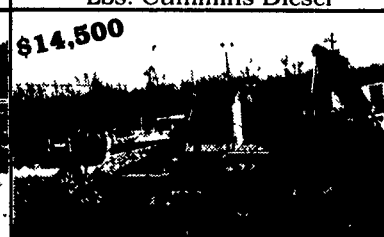
'95 John Deere 755B  
ROPS, Ripper, New Engine  
**\$37,500**



'94 Cat 320L  
Long Stick,  
42" Bucket



'96 Case 580 Super L  
4x4, Ext. Hoe, 2,500 Hrs.,  
Very Good



'88 Cat 416  
2WD, EROPS w/Standard Hoe,  
3,800 Hrs.



'92 Hitachi EX120  
Plumbed for Hammer  
Coupler System