

33 RECREATIONAL VEHICLES

'87 Honda Fourtrax 250X, \$1,250 OBO. 610-268-8258.
Outdoor World Master travel club membership. Must sell! Asking \$5,000. York Co 717-456-5467
Mini mod pullers: 340 Mopar auto, 18.4x16.1 tires, Dana 60, 360 Mopar auto, 18.4x16.1 tires, 8.75 Chry rear. 570-275-1104.
1968 Chevy Nova, tubbed, fiberglass nose, Pro street or race car, \$5500 OBO. 908-218-9191.

35 TRUCKS AND TRAILERS

40' Ravens aluminum flat, 10' spread, air ride, ready for road, \$3,500. 717-328-2294.
'87 Freightliner, 3406 Cat, 350hp, 9spd trans, airride, 42' bunk, good cond., \$9500. '91 Freightliner, 325hp, NTC Cummins, 9sp trans, airride, 60" bunk, \$10,500. '89 Freightliner, 12.7L Detroit, 425 hp, 9 spd trans, airride, 60" standup bunk, \$10,500. 660-429-4048.
'99 F350 duley, black, Lariet, leather seats, approx 25,000 mi left on warranty, \$29,995. 610-212-0509
'93 Dodge 150 HD 1/2 ton pickup, 318 magnum, 5 spd, PS, PB, AM/FM, 6200 GVW w/matching fiberglass cap, 54,000 one owner miles, excellent condition, \$6,250. 717-733-2873
Scag walk behind 61" 5 spd., elect start good shape, used as back up machine. \$2,150 (609)793-2933.
83 Ford F350 12' Stake body dump. 460 motor 4 spd. with snow plow frame. \$4,200. (609)793-2933.
1964 International Loadstar 1600 dump truck. 83,000 original miles, 345 motor, 2 speed rear, new tires, exhaust in great shape! Ready to pull trailers. \$3,200 (610)793-2933.
Gravelly Promaster 400 72" cut 30 hp Yanmar diesel. Twin fuel tanks, power steering 1300 hrs., 11 mph cut speed extra parts and blades. 610-793-2933.
Complete wetline for tractor trailer, \$500 obo. 610-253-1419
93 Ford F-350 4x4 5spd Dually, Hi Miles, Rebuilt 460, 11K GVW w/32' Trailer Shed Hauler, 21K GCW, Ready to Haul! \$12,000. 717-561-1852
1988 Mack Superliner, Road Tractor, w/5th wheel, air ride suspension, exc cond. 570-224-4662.
70 Intl. Alum tank truck 315 gal hose reel & pump, 6 cyl. 504 gas, fair cond. 570-672-2572 x120 \$1,500 OBO.
Ford F350, 1975, 10' stake body, 11,000 GVW, 360 C.I., 4 Bbl, Holley 4sp, 4:56 rear, engine was rebuilt, dual wheels w/radiats, \$2000. 717-258-0561 before 9pm
'82 Int 9670 single axle air ride, 290 Cummins, 9 sp, low miles, \$2800. 1-800-839-3338
'95 GMC SL 1500 4x4, 4.3, 5 spd, PS, PB, AM-FM, 6,100 GVW, 44,000 miles, teal, \$10,500. 717-733-2873
1997 East Tri-axle Dump Trailer, Alum Frame, 34', w/Roll Tarp. \$27,500. Exc Cond 1-888-625-6485
1988 Int'l Day Cab Tractor, 350 Cummins, 10 Spd \$7,400 610-921-1955
Mack cabs Superliner, R model & DM cabs. R model hood. Mach engine E6300, 285 & 237 Detroit eng. 238 transmission, Mack 6 spds., air & manual shift & Mack rears. 1-800-839-3338.
1986 Ford 250 diesel auto \$2,500. 1989 Ford diesel \$4,000 OBO. Good farm truck. 610-998-0857.



1992 Ford L8000, 5-Spd. - 2 Spd. Rear, 2,500 gal. tank, 92,000 mi., Excellent condition. \$40,000
610/826-4381

USED TRUCK BODY

Storage Box
24' Morgan, Side Door & Roll Up
\$500
2500 lb. Tuckaway
Lift Gate
\$250
(717) 656-9507



1996 Freightliner LF70, 18' Kidron Reefer, 5.9L Cummins, 6 Speed, AC, PS, 26,000 GVW



1997 Isuzu NPR, Cab & Chassis, 4 cyl Diesel, Auto w/Overdrive, AC, PS, 14,250 GVW



1984 International, Cargo Star w/16' Dry Van Body, Roll Up Rear Door, 7.3 Diesel, Auto, Hyd Brakes, 20" Rubber, 22 5000 GVW, 192,000 Miles



1994 International 4900, DT 466 Eng., 190 HP, 6 Speed, Hyd Brakes, 30,000 GVW, 11R 22.5 Tires - Priced To Sell! Cab & Chassis



1984 GMC 7000, 366 V-8 Gas, 5+2 spd Trans, Hyd Brakes, New Paint Color, Red 28,000 GVW, 108,184 Original Miles, New Tuneup, New Service, New Tires, New Brakes, PA State Insp



1994 International 4700, 175 Hp DT 408 Diesel, 5 Speed Trans, Full Disc Brakes, Budd Wheels, 22.5 Rubber, PS, AC, 25,500 GVW, 14' Supreme Reefer Body, Folding Rear Drs, Thermo King MD11 Unit, Clean Truck!



1994 Ford L9000 Tractor, GVW 34,700, Single Axle, Engine N14 Cummins w/710 HP Transmission, 10 Spd Manual, Air Suspension, Air Brakes, P/S & AC



1982 International F2275, Conv Cab, 671 Detroit Diesel, 10 Speed Road Ranger Trans, Henderson Susp 11R24.5 Tires Budd Wheels, PS PTO & Wet Line, 53,000 GVW, Low Miles, Good Farm Truck!



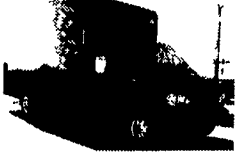
1994 International 4900, DT 466 5 Speed Trans, AC, PS Full Hyd Disc Brakes, 11R22.5 Tires, 25 500 GVW, 24' Body Side Dr Lift Gate, Roll Up Rear Dr



1993 International, 7.3 Diesel, 5 Speed Trans, PS, AC, Full Disc Brakes, 79,000 Miles, New Rubber, Paint "All The Bells," Looks New, Runs New, 25,500 GVW



1994 International, Cab & Chassis, DT 466, 210 HP Eng, 6 Speed Trans, AC, PS, Full Air Brakes, Looks New & Runs New! 33,000 GVW



1995 Ford E350, 460 HP Gas, H D Auto, 14 Ft Body, Roll Up Rear Dr, Nice Shape, 10,900 GVW

Lots Of Used IVECO Parts

Best mechanical trucks in the area, plus the cleanest! We service what we sell We offer a wide variety of dry van bodies, storage bodies and flatbeds We also shorten & lengthen chassis to accommodate your truck body or flatbed

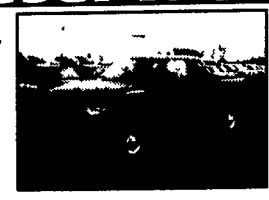


1992 Dodge Ram 150, V-6 Mag Eng, Auto, New Brakes, Tires & Shocks, 75,616 Miles, Excellent Like New!

Phone 717-664-1695
CHARTER ENTERPRISES, LTD.
270 Hostetter Road, Marihlm, PA

Providence Chrysler - Dodge - Jeep
Part of the Lancaster County Motors Family of Dealerships
Your Diesel HO!

NEW 2001 DODGE RAM 2500 QUAD CAB SLT 4x4
Cummins Turbo Diesel Sport Appearance trailer tow Camper spl antispin CD on/off road tires factory bed liner block heater #10888
MSRP: \$36,625, -\$4,175 Providence Disc, -\$1,000 Factory Rebate, -\$500 Farm Bureau Rebate
NOW \$30,950!



NEW 2001 DODGE RAM 2500 REG CAB SLT 4x4
Cummins Turbo Diesel automatic trailer tow pkg antispin fog lamps on/off road tires rear slider factory bedliner & more! #10889
MSRP: \$33,950, -\$3,860 Providence Disc, -\$1,000 Factory Rebate, -\$500 Farm Bureau Rebate
NOW \$28,590!



NEW 2001 DODGE RAM 3500 QUAD CAB SLT 4x4
Cummins Turbo Diesel auto trailer tow Camper spl Travel Convenience pkg towing mirrors keyless P/seat CD fact bedliner much more! #11024
MSRP: \$39,885, -\$4,435 Providence Disc, -\$1,000 Factory Rebate, -\$500 Farm Bureau Rebate
NOW \$33,950!



PRE-OWNED SPOTLIGHT!
'98 Dodge RAM QUAD CAB SLT 4x4 '97 Dodge RAM CLUB CAB SLT 4x4
NOW ONLY \$28,250! NOW ONLY \$25,950!

SALES MON-FRI: 9AM-9PM SATURDAY 9AM-4PM
Call Toll-Free 877-288-9996 or Phone 284-9900
804 Lancaster Pike, Quarryville
www.providenceautos.com
e-mail: Vehicles@lannews.infi.net



10' Snowplow
\$300 obo
- Call -
610-965-5465

- Generator set, 15 Kw Kohler, Waukesha Eng, propane, 3 Ph 120/208 Volts **\$2,200**
 - Generator set, 25 Kw Kohler, Hercules Eng Gas, 3 Ph 120/230 Volts **\$2,800**
 - Generator set, 50 Kw Hol-Gar, Gas, 3 Ph 240/480 Volts, on trailer **\$2,500**
 - Generator, 150 Kw, 3 Ph 2-Bearing **\$1,200**
 - Lighting unit, 2 Kw, Gas, Portable **\$1,100**
 - Lighting unit, 1 Cyl Diesel, 2 lights, portable **\$1,300**
 - Abrasive wide belt sander, Sanding Master, 48" double belt **\$5,500**
 - Air Compressor, Worthington, 40 Hp Electric, complete **\$1,800**
 - Air Compressor, Speed Aire, 2-10 Hp units on tank, 3 Ph **\$1,800**
 - Jig Bore, Fosdick Sn 2222124, digital readout, NICE! **\$5,000**
 - Press, 150 ton, Hydraulic, 4'x8' Plywood Press **\$2,800**
 - Roller, Walk behind, Hatz Diesel, Vibrator **\$2,500**
 - Crane Magnet, 42" **\$1,200**
 - Crane Scales, 10,000#, Digital **\$650**
 - Loader, 175 Michigan, GM Diesel, Runs and Operates **\$3,500**
 - Forklift, 15,000# Yale, Air Tires, Propane **\$3,500**
 - Concrete Saw, 16" Diamond blade, gas powered, w/water attachment **\$1,600**
 - Solid rubber tires for Ford Tractor, complete set **\$400**
 - White cedar shingles, 5/8" (15 Sq).. **\$100/Square**
- 717/354-3105**

WM. COHEN & SONS, INC.
"THE TRUCK PARTS STORE"
HEAVY DUTY TRUCK PARTS - NEW & USED - REBUILT REARS & TRANSMISSIONS
(610) 269-1298 Fax (610) 269-0787 www.cohentruckparts.com

11.1 60 series Detroit engines
12.7 60 series Detroit engines
8.2 non-turbo Detroit engines

1985 Mack Superliner
V8 Mack 4 Valve Engine, 7 Spd Trans, Mack Rears on Camelback Suspension 11x24.5 Tires On Aluminum Budds

Ingersoll Rand Air Compressor,
Type 30, 15 HP 3 Phase

Forklifts For Sale
Hyster 2,000 lb capacity, 3 wheeler, propane gas, solid tires, 92" fork height, 48" forks
Towmotor 4,000 lb capacity, 2 stage mast, 108" fork height, 42" forks, solid tires
Towmotor 2,000 lb capacity, 106" fork height, 42" forks, solid tires

Clark Crane, 14 Ton Capacity
4-53 Detroit, 60' boom, 14 00x24 tires, runs good, serial #720

200 Gal. & 550 Gal. Plastic Tanks For Sale

12' Reefer Body,
under body refrigeration unit, Uses 220 electric Has damage

Michigan Loader Model L30
Quick Coupler, Comes With 1 Yard Bucket and 60" Forks, Runs Excellent

4 I-Beams,
49' Long, 28" High w/12-1/2" Web

Aluminum Tanker/Trailers
7500 gal. and up

91 Isuzu NPR, 4 cyl turbo-diesel, auto, 14' reefer body,
110 electric, 195,969 mi.

94 IH Model 4900
DT466 engine, 5 spd, single rear, air brakes, A/C, 32,900 GVW, double frame, 11x22.5 Budds, 254" W.B.

New Flatbeds Available
Sizes currently available are 12', 14', 20', 22' and 24'. Racks are also available.

(9) 40' - 45' 1970's & Newer Steel Flatbed Trailers (also have drop check trailers) some have sliding tandems, all in good condition.
\$2,500/Ea. and Up