

Westminster Livestock

Hagerstown, Maryland

Report Supplied by Auction

Tuesday, November 14, 2000

SLAUGHTER COWS: 107 HEAD, 1.00 HIGHER. UTILITY 37.00-41.00, HIGH DRESSING 41.00-44.50, CANNERS 34.00-38.50, SHELLY 34.00 DOWN.

BULLS: YG#2 1700-2150 LBS. TO 45.25.

FED STEERS: 27 HEAD, .50-1.00 HIGHER. HIGH CHOICE TO PRIME 1200-1475 LBS. 70.75-72.50, CHOICE 2-3 1100-1400 LBS. 67.00-69.50, OVER 1400 LBS. 64.00-65.00, CHOICE 4-5 57.00-60.00, HIGH CHOICE TO PRIME HOLSTEINS 1100-1300 LBS. 63.50, LOW CHOICE 1050-1200 LBS. 57.00-59.50, SELECT TO 54.50.

FED HEIFERS: 10 HEAD. HIGH CHOICE TO PRIME 1100-1400 LBS. 70.75-71.50, COMM 42.00-50.00.

CALVES: 98 HEAD, MOST RET. TO FARM. HOLSTEIN BULLS 5.00 HIGHER. #1 90-120 LBS. 125.00-144.00, 80-90 LBS. TO 97.00; #2 90-120 LBS. 92.00-120.00, 140-160 LBS. 90.00-92.00; HOLSTEIN HEIFERS FEW OFFERED. #1 84 LBS. AT 265.00; #2 70-100 LBS. 150.00-170.00; 1 BEEF X HEIFER 95 LBS. AT 185.00.

BUTCHER HOGS: 31 HEAD, 1.00

HIGHER. #1 AND 2 240-290 LBS. 35.00-35.50; #1 AND 3 215-250 LBS. 33.00-34.75; 1 312 LBS. AT 31.25; 1 386 LBS. AT 28.50.

SOWS: 8 HEAD. 400-500 LBS. 26.00-31.25, 500-700 LBS. 28.00-31.00.

BOARS: 3 HEAD 300-650 LBS. 12.00-15.00.

STOCK CATTLE: 162 HEAD. STEERS MED. AND LRGE. FRAME 200-400 LBS. 83.00-97.00, 400-600 LBS. 78.00-89.00, 600-700 LBS. 76.00-86.00, 700-1000 LBS. 65.00-70.00.

HEIFERS: MED. AND LRGE. FRAME 200-400 LBS. 78.00-88.00, 400-500 LBS. 73.00-81.00, 6 ANGUS 90.00-91.00, 500-600 LBS. 70.00-81.00, 600-700 LBS. 65.00-75.00.

BULLS: MED. AND LARGE FRAME 200-400 LBS. 80.00-96.00, 400-500 LBS. 76.00-90.00, 500-600 LBS. 74.00-85.00, 600-800 LBS. 64.00-71.00, 800-1000 LBS. 53.00-60.00, 1 AT 65.50.

SHEEP: 10 HEAD 38.00-59.00.

LAMBS: 74 HEAD. HIGH CHOICE TO PRIME 90-110 LBS. 80.00-91.00, 115-128 LBS. 70.00-72.00, 60-90 LBS. 90.00-95.00; 1 50 LBS. AT 107.00; MED. 30-60 LBS. 65.00-93.00.

GOATS: 61 HEAD. LARGE BILLIES AND WHETHERS 70.00-94.00, NANNIES 60.00-80.00, MED. BILLIES 60.00-75.00, NANNIES 45.00-70.00, SMALL 20.00-35.00.

PIGS AND SHOATS: 93 HEAD. BY THE HEAD 20-30 LBS. 12.00-16.00 30-40 LBS. 15.00-24.00, 40-60 LBS. 22.00-35.00; BY THE LB. 50-70 LBS. 50.00-60.00, 70-85 LBS. 50.00-55.00.

NEXT TUES., NOV. 21, SPECIAL FEEDER CATTLE SALE. APPROX. 7:45 P.M.

Four States Livestock

Hagerstown, Maryland

Report Supplied by Auction

Wednesday, Nov. 15, 2000

SLAUGHTER COWS: 85 HEAD, TO 1.50 LOWER. UTILITY 38.00-41.75, HIGH DRESSING 42.00-44.25, LIMOUSIN AT 45.75, CANNERS 34.00-39.00, SHELLY 34.00 DOWN.

BULLS: 6 HEAD. YG#1 1870 LBS. AT 47.00; YG#2 1200-1700 LBS. TO 44.75.

FED STEERS: 12 HEAD, STEADY. HIGH CHOICE TO PRIME 1150-1475 LBS. 69.00-73.00, LOWER CHOICE 66.00-69.00, 1600-1700 LBS. 63.00-65.50.

FED HEIFERS: 17 HEAD. HIGH CHOICE TO PRIME 1200-1400 LBS. 68.00-70.75, 1050-1200 LBS. 67.00-69.00; 6 HEAD CHOICE 4-5 HOLSTEIN X 1500-1750 LBS. 44.00-55.00.

CALVES: 142 HEAD. GOOD 150-325 LBS. 70.00-77.00, 85-115 LBS. 59.00-70.00; HOLSTEIN BULLS RETURN-

ING TO FARM, HEAVYWEIGHTS STEADY LIGHT 20.00 LOWER. #1 94-120 LBS. 127.00-140.00, FEW LATE TO 150.00; #2 97.00-125.00, 80-92 LBS. 70.00-95.00; HOLSTEIN HEIFERS GOOD DEMAND. #1 85-115 LBS. 325.00-390.00; 65-80 LBS. 110.00-305.00; BEEF X BULLS AND HEIFERS 100-120 LBS. 165.00-190.00.

BUTCHER HOGS: 10 HEAD, NO TOPS OFFERED. #2 AND 3 225-260 LBS. 35.00-37.00, 1 328 LBS. AT 35.00.

SOWS: 16 HEAD. 400-600 LBS. 28.00-32.00, THIN AND ROUGH 16.00-26.00.

BOARS: 1 432 LBS. AT 11.50.

STOCK CATTLE: 174 HEAD. STEERS 200-400 LBS. 75.00-90.00, 400-600 LBS. 79.00-88.00, 600-800 LBS. 66.00-77.00, 800-1000 LBS. 57.00-65.00.

HEIFERS: 300-500 LBS. 74.00-86.00, 500-600 LBS. 70.00-82.00.

BULLS: 200-400 LBS. 85.00-105.00, 400-600 LBS. 73.00-86.00, 600-700 LBS. 67.00-75.00.

DAIRY REPLACEMENTS: 35 HEAD. LARGE SPRINGING HEIFERS 1100.00-1225.00, LARGE FRESH HEIFERS 1100.00-1275.00; COWS MILKING 725.00-1010.00; MED. OPEN HEIFERS 600.00-700.00; SMALLER 350.00-500.00.

LAMBS: HIGH CHOICE TO PRIME 100-125 LBS. 75.00-78.50, 125-140 LBS. 66.00-67.00.

GOATS: TO 86.00; MED. 48.00-66.00.

PIGS AND SHOATS: 63 HEAD. BY THE HEAD, 20-35 LBS. 13.00-19.00, 40-60 LBS. 20.00-26.00.

Mercer Livestock Auction

Mercer, Pa.

November 14, 2000

Report Supplied By PDA

CATTLE 471... (SUPPLIED BY THE AUCTION). STEERS active, cows steady, heifers steady to 100 lower, bulls firm.

STEERS: High Choice and Prime 2-4 1110-1445 lbs 68.00-70.75, Choice 2-3 1150-1560 lbs 64.50-67.00, Select 1-3

53.00-60.00, Standard 1-2 48.00-57.00.

HOLSTEIN STEERS: Choice 2-3 1170-1590 lbs 60.00-64.00, Select 1-2 53.00-60.00, Standard 1-2 45.00-49.00.

HEIFERS: High Choice and Prime 2-4 1190-1475 lbs 63.750-67.00, Choice 2-4 1075-1450 lbs 55.00-64.00, Select 1-3 45.00-54.00, Standard 1-2 42.00-48.00.

COWS: Breakers 75-80% lean 38.00-43.00, Boners 80-85% lean 34.00-37.50, Lean 85-90% lean 25.00-30.00. Shells 8.00-15.00.

BULLS: Yield Grade 1 1470-2040 lbs 43.00-51.00, Yield Grade 2 1170-1680 lbs 34.00-45.00.

FEEDER CATTLE: STEERS Medium and Large 1 310-640 lbs 82.00-99.00, 380-740 lbs 62.00-80.00, Medium and Large 2 700-1080 lbs 47.00-61.00, one 300 lbs 101.00; HEIFERS: Medium and Large 1 360-640 lbs 73.00-89.00, 450-840 lbs 53.00-70.00; BULLS Medium and Large 1 340-620 lbs 84.00-53.00, 705-890 lbs 47.00-53.00.

CALVES 106... VEALERS: Good 80200 lbs 40.00-65.00, Standard and Good 80-230 lbs 25.00-47.00, Utility 50-90 lbs 10.00-30.00.

FARM CALVES: No 1 Holstein bulls 95-115 lbs 105.00-155.00, No 2 90-120 lbs 80.00-120.00; No 1 Holstein heifers 95-110 lbs 255.00-300.00, No 2 85-115 lbs 190.00-200.00.

Beef type bulls and heifers 85-100 lbs 100.00-140.00.

HOGS 84... BARROWS AND GILTS: 49-54% lean 230-255 lbs 38.00-39.75, 45-50% lean 200-230 lbs 32.00-33.50.

SOWS: US 1-3 450-835 lbs 29.00-31.50, Medium 380-485 lbs 24.00-27.00

BOARS: 330-760 lbs 14.50-15.50

FEEDER PIGS 10... US 1-3 35-43 lbs 18.00-21.00 per head.

SHEEP 43 .SLAUGHTER LAMBS

Good and Choice 47-63 lbs 40.00-52.50.

FEEDER LAMBS: one Good and Choice 71 lbs 63.00.

SLAUGHTER SHEEP: one 25 00

GOATS 2... (All sold by the head) One

Medium Billy 35 00, one Medium Nanny

43.00.

TALK TO US BEFORE YOU BUY



- Forages • Grain
- Complete Feeds

WE HAVE PROGRAMS THAT WILL WORK FOR YOU!



Check Out Our ROUGHAGE EXTENDER And COMPLETE FEED

We Can Lock Your Price In For 3, 6, or 9 Month Give Us A Call:

HESSMILLS



PURINA CHOWS

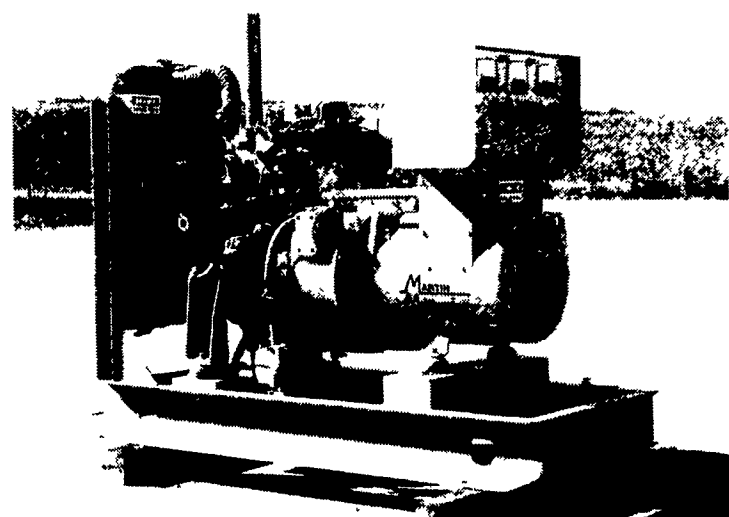
6 S Vintage Rd., Paradise, PA 17562

(717) 442-4183 800-635-3592

Lancaster Farming

Antique Center

See pages B19-B23



GENERATORS

Sales ★ Service ★ Rentals

Complete Generator Systems

PTO • Portables • 2-1600 KW

We Service It If You Have It,

And Sell It If You Need It.



MARTIN MACHINERY

34 W. Mohler Church Rd.

Ephrata, PA 17522

Tel: 717-738-0300

Fax: 717-738-4329