

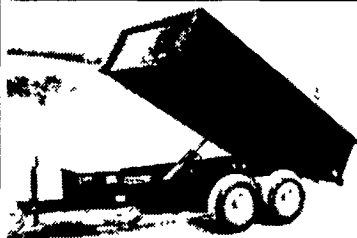
35

TRUCKS AND TRAILERS

1989 M-Benz 1419 Truck,
32,900 GVW,
22' Morgan Reefer
w/MDII T-King
300K Mi, Ex. Cond
\$9,500

Call Jim @
(717) 397-7700 x6700

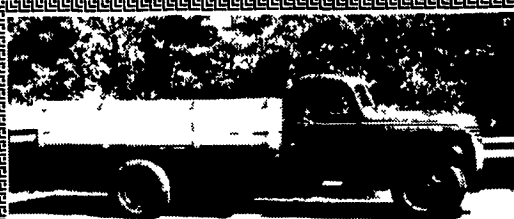
Load Boss Trailers Quality Built



Fall
Special
6x10
10,000
GVW
\$3,200

814-623-8696

Picked up at our factory.
Every trailer built for your needs.



1946 CHEVROLET

4 Spd., Green/Black Fenders, Totally
Restored In And Out
\$10,000

Call After 7 P.M. M-F

Anytime Sat., Sun. **(540) 364-2668**



1980 International PS 5000, 6x6, AWD,
3200 Gal., Pres./Vacuum Tanker, 290 Cummins,
Diesel, 10-Spd., GVW 64,000 Lbs.,
Includes New Bk-up, PB 8-Vac./Pump.
\$35,000 OBO

717-495-9668 or 747-9614

**TRUCK CAPS • BED LINERS
COMPLETE SERVICE DEPARTMENT**



Apple Auto Sales, Inc.

Prouned Cars & Trucks

Route 30 - Lincoln Highway East, Gap, PA 17527
717-442-9700 • 717-299-9900 • FAX 717-442-3140
Email contactus@appleautosales.com Web www.appleautosales.com

3 Seven Available
93-94 GMC Utility
Trucks, All Low Miles,
All w/350 FI, AT,
A/C, Cassettes



- 1999 Ford E-350 XLT,** Super Duty, 15 Passenger Van, V10, AT, Cas, PS, PB, A/C
Front & Rear, Tilt, Cruise, PW, PL, PM, P Driver Seat
- 1993 Chevy 1500 Work Truck** 4 3 LT V6, AT, PS, PB, AM/FM, 8 ft Bed, 2WD,
61K Miles
- 1996 Ford Stake Body,** 12' bed, 460 V8, AT, Electric Lift Gate, 40,000 Mi, Green
- 1997 Dodge Ram X-Cab Dually,** 4x4, 5.9 Cummins Diesel, AT, PS, PB, PW, PL,
Cruise, Tilt, Foglights, P Seat, A/C CD & Cass, 11,000 GVW, Black & Silver
- 1999 Ford F-350 4 Door X-Cab,** 4x4, Dually, Triton V10, 8' Bed, AT, PS, PB, PW,
PL, PM, Cruise, Tilt, A/C, AM/FM Cass, 6,500 Miles
- 1999 Dodge Ram 3500,** Dually 4x4, 10' Dump, Cummins 6 Cyl, 5 Spd, PS, PB,
AM/FM/CD, A/C w/Plow & Salt Spreader
- 1997 Ford F-250 X Cab,** 4x4, 7.3 Power Stroke Diesel, AT, PS, PB, PW, PL, PM,
Cruise, Tilt, A/C, Dual Tanks, Cass, 8 Ft Bed, 8800 GVW, Red & White

LIFETIME FREE INSPECTIONS • BUY & SELL

410-658-5978
800-858-0288
"T-Plates"



Rock Springs Hardware

Rising Sun, MD
Mon. - Sat. 8-7 • Sun. 8-6

in Cecil County 1320 Rock Springs Rd. (Rt. 222), 3 miles N. of Conowingo



CURTIS Snowplows & Loader Blades *Taking America by Storm!*

SNO-PRO® 3000™
HITCH-N-RUN SYSTEM

Curtis plows are a one piece, one step process. Major time savings is offered with our exclusive near automatic HITCH-N-RUN SYSTEM. This is a pinless, spring loaded device that works in unison with a patented hitch system.



FEATURING:

- Pinless Snap Lock System
- Extended Push-Frame
- Power Plug/Weather Cap
- Hide-Away Hydraulics®
- Hydraulic Jack Stand
- Hide-Away Mount Kit

Loader Blades for Tractor & Skid-Steer Loaders
stop in for more information!

Salt & Sand Spreaders Available

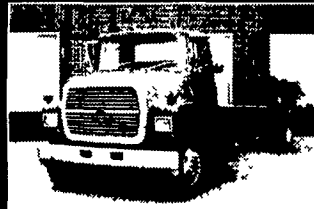


**AL HAMILTON
USED TRUCK SALES**

P.O. Box 157

55 Doe Run Road, Manheim, PA 17545

Phone: 717-665-7145 Fax: 717-665-2137



'92 FORD LN8000
C&C, 7.8 Ford Diesel, 210 HP,
6 Spd Trans, Custom Cab, Air
Brakes, 234 W.B., 168 C.A.,
33,000 GVW **\$18,500**



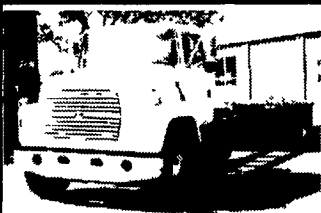
'94 FORD F700
C&C, 429 Gas, 5 Spd. Trans.,
14,000 Actual Miles, 207 W.B.,
140 C.A., Like New
\$17,500



'94 FORD LN8000
New 10' Dump, 8.3 Cummins
210 HP, 6 Spd Trans.,
Air Brakes, Custom Int.,
35,000 GVW
\$29,500



'86 FORD LN8000
New 10' Dump, 3208T, 250 HP,
5 Spd Trans, 2 Spd Rear,
Custom Int., 33,000 GVW
\$19,500



'95 FORD LN8000
C&C, 8.3 Cummins, 210 HP,
6 Sp Trans, Custom Int,
Air Brakes, A/C, 260 W.B.,
192 C.A., 35,000 GVW
\$23,500



'94 FORD LNT 9000 C&C
L-10 Cummins 280 HP, 9 Spd
Trans, Air Brakes, A/C, 264
WB, 192" C.A., 58,000 GVW
\$35,000



'87 FORD LN 8000 C&C
7.8L Ford Diesel, 240 HP, 6
Spd. Trans, Custom Cab, A/C,
Air Brakes, 222 W.B., 156 C.A.,
33,000 GVW **\$16,500**



'93 INT. 4900
w/18' Morgan Box & Lift Gate,
8' High, 102" Wide, DT-466, 5-
Spd. Trans, 35,000 GVW, A/C,
Air Brakes **\$19,500**



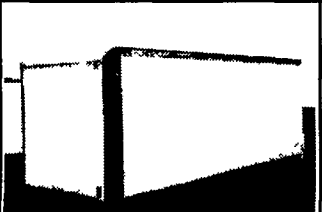
'93 INT. 4900
Tandem C&C, DT-466,
250 HP, 254" WB, 7 Spd Trans,
186 C.A., 58,000 G.V.W.
\$32,500



'93 INT 4700
16' Van Body w/Lift Gate,
DTA 360, 170 HP, Hyd.
Brakes, A/C, 25,500 GVW,
5-Spd Trans **\$15,500**



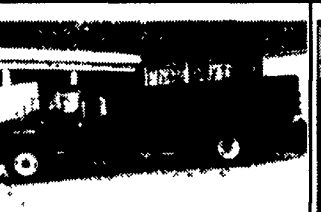
'89 FORD LN8000
New 10' Dump, 7.8L Engine,
240HP, 6-Spd Trans,
33,000 GVW
\$21,500



USED VAN BODIES
18'-26' Starting **\$2,000**
1 - 18' Hackney Reefer Body
w/MD1 Thermo King, Good
Working Condition **\$3,500**



'98 EAGER BEAVER
10 HA-PT, 22' Deck, 6' Ramps,
102 Wide, Air Brakes,
25,000 GVW, Brand New
\$9,500



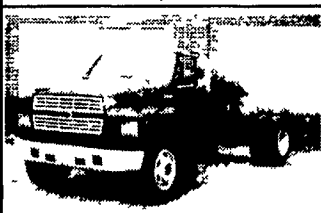
**'85 INT. 1700 16' FLAT
DUMP**
9L Engine, 5 Spd. Trans., Hyd.
Brakes, 25,000 GVW
\$14,500



'95 INT. 4700 C&C
DT408, 5 Spd. Trans, Hyd.
Brakes, Custom Int., A/C,
WB168, CA 108, 25,500 GVW
\$15,500



'92 GMC TOP KICK
22' Van Body, 3116 Cat, 6
Spd Trans, PS, AB, Lift Axle,
52,000 GVW, Low Miles
\$28,500



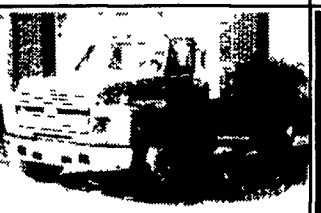
'93 FORD F-600 C&C
5.9 Cummins, 160 HP, 5-Spd
Trans, Hyd Brakes, A/C,
174" W.B., 108 CA, 25,500 GVW
\$14,500



'94 FORD LNT 8000
26' Van Body, Lift Gate, Side
Door, 8.3 Cummins, 225 HP,
9-Spd Trans, Custom Cab,
A/C, 58,000 GVW
\$35,500



'95 INT. 4900 C&C
DT-466, 210 HP, 6-Spd. Trans,
Custom Int, A/C, 254" W.B., 185
C.A., Air Brakes, 35,000 GVW
\$23,500



'94 FORD F600 C&C
5.9 Cummins, 160HP, 5-Spd.
Trans, 2-Spd. Rear, Hyd.
Brakes, A/C, Custom Cab, 174"
W.B. 104 C.A., 26,000 GVW
\$16,500

**"CLEANEST
TRUCKS
AROUND"**