

35

TRUCKS AND TRAILERS

1989 37' Benson Frameless Dump, Spread Axel, 64" Sides, Liner & Sherlock Roll Tarp. Exc Condition! Must Sell! \$22,900/Neg. 570-286-0982

33'L enclosed racing car trailer, 8' inside width, overhead hoist track, 410-984-5257.

'86 Ford F150, P/S, P/B, 4 spd OD trans, new paint, 148K, runs great, new inspection, 8' bed, \$2,250. 717-396-0356.

14' Aluminum cattle bed. Moveable divider. Good condition. Asking \$2,700 (717)865-4329.

Freightliner hoods mid 80's thru 1990. Sliding tandem box trailer axles w/ wheels \$300 each. 570-897-9090.

Holmes 600 wrecker on IH diesel truck, no title \$1,000. 570-897-9090.

80 Chevy 3500 flatbed truck 350 4-spd, PS, PB, no rust. Good paint, \$3,000 OBO 717-867-5633.

1991 Ford F250, 4x4, XLT Lariat, 7.3 dsl, auto, Meyers power angle snow plow, bed liner, tool box, \$8,500. 610-932-5270.

1999 Dodge Ram 3500, 24 valve dsl, dually, bumper & gooseneck hitches, loaded, 42K, \$26,000. 302-628-0100.

'91 Ford F350 XL, 4x4, dsl, 9' Omaha stake dump, 5 spd, 45,000 orig private owner miles, always garaged, exc cond, \$14,000. 610-942-4829.

'88 F700 Ford, L210 dsl, 225hp, runs good, \$6,000. 717-442-8339, 717-371-6338



LAHMAN LITTLE DIPPER

2 Cyl. Kohler, Only 225 Hrs., Aux. Hyd. \$3,000

REBER AUTO CO.

Lincoln Ave. & Cumberland Sts. (for 29 yrs.) Lebanon, PA 717-273-5941

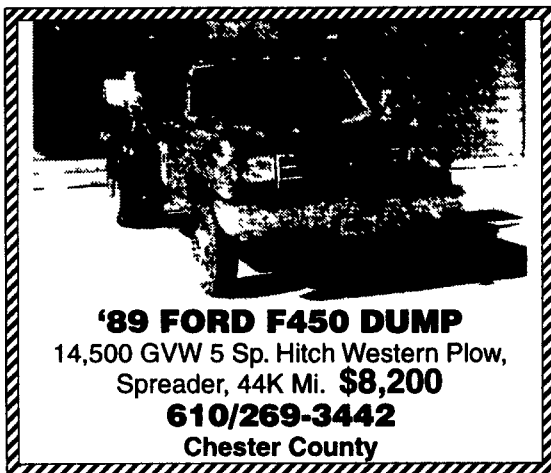
PRICES REDUCED!

- 4 - 1993-94 Dorsey Air Ride Vans, Vents Front & Rear
- 1 - 1995 Dorsey Reefer 48x102", Air Ride, SBII Thermo King
- 1 - 1995 Dorsey Reefer 48x102 Air Ride w/out unit
- 3 - 1995 Trailmobile 48x102" Air Ride Trls
- 1 - 1985 Mack straight truck, 22' box w/lift gate
- 1 - 1994 Kenworth WL900 425 Cat 13 speed Aero cab, PS, AC, power windows
- 1 - 1992 Kenworth T-600 Aero cab, 425 Cat, 13 speed, PS, AC
- 1 - 1990 Kenworth T-600 60 Series Detroit 9 speed, PS, AC, Big Bunk
- 1 - 1985 Kenworth T-600 Day Cab, 350 Cummins, 9 speed
- 1 - 1995 Kenworth T-600 435 Detroit, 13 speed, Aero Cab, PS, AC, Rebuilt Motor & Trans.
- 1 - 1994 Freightliner Cabover, 400 Cat, 9 speed, AC, PS

❖ Financing Available ❖

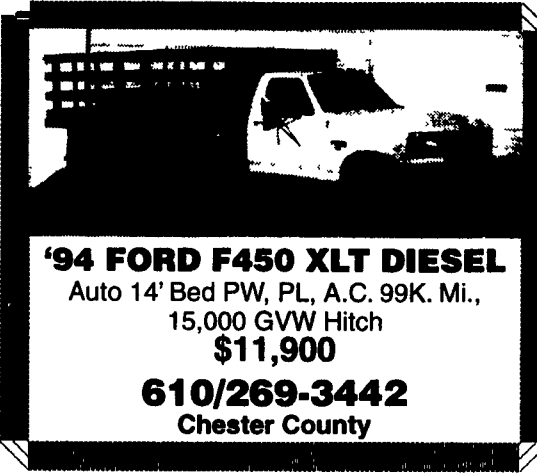
Curran Inc.

2719 Delta Road, Brogue, PA 17309
717-927-9244



'89 FORD F450 DUMP

14,500 GVW 5 Sp. Hitch Western Plow, Spreader, 44K Mi. \$8,200
610/269-3442
Chester County



'94 FORD F450 XLT DIESEL

Auto 14' Bed PW, PL, A.C. 99K. Mi., 15,000 GVW Hitch \$11,900

610/269-3442
Chester County

ISUZU TRUCK

Snyder
VOLVO TRUCK CENTER

VOLVO

2150 S. Queen Street
York, Pennsylvania 17402
Telephone: (717) 741-4681
1-800-723-7004

Two To Choose From!

1996 ISUZU, NPR 15' Box, Pull-Out Ramp, Auto, AC, PS, 11,050 GVW

1997 CHEVY K2500 CHEYENNE w/Camper Top, V8, Auto, AC, 98,000 Miles

2001 VOLVO VNL 64T - 465 HP Day Cab, 99 Volvo VNM64T - 425 HP Day Cab

1995 MITSUBISHI FUSO, FE449Ex 16' Stake Body, 13,500 GVW, 175,000 Miles, Auto, AC, PS

4X4's

- 88 Chev. Tk, 1/2 Ton, Silverado, 350 V-8, Auto, PS, P.B., A/C, CC, Tilt, P.L., P.W., AM-FM, Brown/Tan
- 89 Chev. Suburban, 1/2 Ton, Silverado, 350 V-8, Auto, PS, P.B., A/C, Tilt, P.L., P.W., AM-FM, Blue/Silver
- 91 Chev. Blazer, Scottsdale, 350 V-8, Auto, PS, P.B., A/C, Radio, 50,000 Mi., Blue
- 94 Chev. Suburban, 1/2 Ton, Silverado, 350 V-8, Auto, P.S., P.B., Dual Heat & A/C, CC, Tilt, P.L., P.W., P. Seat, Cass, 8 Pass, 65,000 Mi., Red
- 94 Chev. S-10 Blazer, Tahoe, 4 3 Vortec V-6, Auto, P.S., P.B., A/C, CC, Tilt, P.L., P.W., Cass., Black
- 96 Ford Explorer Sport, 2 Dr, 4.0 V-6, 5 Spd, P.S., P.B., A/C, CC, Tilt, P.L., P.W., Cass, 37,000 Mi., Red
- 96 Jeep Cherokee Sport, 4 Dr, 4.0 6 Cyl, Auto, P.S., P.B., A/C, Tilt, Am-FM, 50,000 Mi, White
- 97 Ford Tk, 1/2 Ton, XL, 6 Cyl, Auto, P.S., P.B, A/C, AM-FM, Cap, 39,000 Mi., Green
- 97 Chev. Ext. Cab Tk, 1/2 Ton, Silverado, 350 Vortec V-8, Auto, P.S., P.B., A/C, CC, Tilt, P.L., P.W., P Mirrors, Cass, CD Player, Cap, Black
- 98 Ford Ext. Cab 3 Dr Tk, 1/2 Ton, XL, 4.6 V-8, Auto, P.S., P.B., A/C, CC, Tilt, Cass, Green/Silver
- 99 Dodge Quad Cab TK, 1/2 ton, SLT Laramie, 4 DR, 318 V-8, Auto, P.S., P.B., A/C, CC, Tilt, P.L., P.W., Cass., Green/Silver.

2WDs

- 93 Ford Ext. Cab Tk, 3/4 Ton, 8' Bed, XLT, 351 V-8, Auto, P.S., P.B., A/C, CC, Tilt, P.L, P.W., P Mirror, Cass, Black/Silver
- 94 Chev. Ext. Cab Tk, 1/2 Ton, Silverado, 350 V-8, Auto, PS, P.B., A/C, CC, Tilt, P.L., P.W., AM-FM, 63,000 Mi, Burg/Silver

VANS

- 93 Chev. Astro Ext. LT, 4.3 V-6, Auto, PS, P.B., Dual A/C, CC, Tilt, P.L., P.W., Cass, Blue
- 94 GMC Cube Van, 3500 HD, 14,000 GVW, 14' Box, 350 V-8, Auto, P.S., P.B, AM-FM, White
- 96 Ford Windstar GL, 3.8 V-6, Auto, PS, P.B, Dual Heat & A/C, CC, Tilt, P.L, P.W, Cass, 59,000 Mi., Lt. Tan Met.
- 97 Ford Windstar GL, 3.8 V-6, Auto, P.S., P.B., Dual Heat & A/C, CC, Tilt, P.L., P.W., P Mirrors, Cass. 45,700 Mi. Teal

CARS

- 94 Merc Tracer SW, Tro, 1 9 4 Cyl, Auto, P.S., P.B., A/C, AM-FM Cass, Mint Green

TRUCK & VAN ACCESSORIES FOR CHRISTMAS

- Hitch Haul
- Sun Visors/Cab Extenders
- Step Bars
- Running Boards
- Fog & Driving Lights
- 5th Wh. Louvered Tailgate
- Bed Liners & Mats
- Fender Flares
- Window Ventshades/Ventvisors
- Bug Deflectors
- Molded Floor Mats
- PLUS MUCH, MUCH MORE
- Bed Rails
- Taillight/Headlight Cover
- Tailgate Protectors
- Frame Mounted Bed Covers
- Truck Steps
- Dash Covers
- Grill & Brush Guard
- Castle Car Care Products

B&B AUTO SALES
(717) 632-1343
2 1/2 Miles South of Hanover, On Rt. 94 (Baltimore Pike)
Hours: Mon., Tues., Thurs. 8-8; Wed. & Fri. 8-5; Sat. 8-12
Family Owned & Operated Since 1972

WM. COHEN & SONS, INC.
"THE TRUCK PARTS STORE"
HEAVY DUTY TRUCK PARTS - NEW & USED - REBUILT REARS & TRANSMISSIONS
(610) 269-1298 Fax (610) 269-0787 www.cohentruckparts.com

11.1 60 series Detroit engines
12.7 60 series Detroit engines
8.2 non-turbo Detroit engines

1985 Mack Superliner
V8 Mack 4 Valve Engine, 7 Spd. Trans., Mack Rears on Camelback Suspension, 11x24 5 Tires On Aluminum Budds

Ingersoll Rand Air Compressor,
Type 30, 15 HP 3 Phase

Forklifts For Sale

Hyster 2,000 lb capacity, 3 wheeler, propane gas, solid tires, 92" fork height, 48" forks

Towmotor 4,000 lb capacity, 2 stage mast, 108" fork height, 42" forks, solid tires

Towmotor 2,000 lb capacity, 106" fork height, 42" forks, solid tires

Clark Crane, 14 Ton Capacity
4-53 Detroit, 60' boom, 14.00x24 tires, runs good, serial #720

200 Gal. & 550 Gal. Plastic Tanks For Sale

Michigan Loader Model L30
Quick Coupler, Comes With 1 Yard Bucket and 60" Forks, Runs Excellent

12' Reefer Body, under body refrigeration unit, Uses 220 electric. Has damage

91 Isuzu NPR, 4 cyl. turbo-diesel, auto, 14' reefer body, 110 electric, 195,969 mi.

4 I-Beams, 49' Long, 28" High w/12-1/2" Web

Aluminum Tanker/Trailers
7500 gal. and up

94 IH Model 4900
DT466 engine, 5 spd., single rear, air brakes, A/C, 32,900 GVW, double frame, 11x22 5 Budds, 254" W.B

New Flatbeds Available
Sizes currently available are 12', 14', 20', 22' and 24' Racks are also available.

(9) 40' - 45' 1970's & Newer Steel Flatbed Trailers (also have drop check trailers) some have sliding tandems, all in good condition \$2,500/Ea. and Up

94 IH Model 4900
DT466 engine, 5 spd., single rear, air brakes, A/C, 32,900 GVW, double frame, 11x22 5 Budds, 254" W.B