

A LESSON WELL LEARNED...

Lancaster Farming's CLASSIFIED ADS GET RESULTS!

Phone: 717-394-3047 or 717-626-1164

33 RECREATIONAL VEHICLES

Mini mod pullers: 340 Mopar auto, 18.4x16.1 tires, Dana 60, 360 Mopar auto, 18.4x16.1 tires, 8.75 Chry rear. 570-275-1104.

1968 Chevy Nova, tubbed, fiberglass nose, Pro street or race car, \$5500 OBO. 908-218-9191.

'94 Big Bear Yamaha 4-wheeler, 4WD, \$2800 obo. 570-758-2136

32A ANTIQUES

1946 Ford rear end & trans, \$250; 1932 Ford front & rear axle, \$250/ea; 1932 Ford BB truck chassis, \$500. 610/845-7100 after 5pm.

Horse drawn buckboard wagon, Democratic style, original comp. lettering, \$1,000 firm. 315-488-3940.

35 TRUCKS AND TRAILERS

'90 Western Star, tri-axle dump, lg body 18 1/2', liner, alum bed, 350 Cat, ex shape, \$42,000 obo. 301-790-0450, 443-956-8101 mobile

91 Int. 4900 w/DT 466 motor, Fuller Rd. Ranger, 10spd 18' van body, AC, AM/FM cassette, int'mt. wiper, heated mirror, air seat, GVW 34,000, payload 19,400, 363k mi, asking \$11,900. 717/274-3676.

'91 Chevy Silverado 1500 4x4 Suburban, 350, auto, PS, PB, PW, PDL, cruise, tilt, air, 8 pass., towing package, 2 tone blue, 92,000 miles, excellent condition, \$10,900. 717-733-2873

'95 GMC SL 1500 4x4, 4.3, 5 spd, PS, PB, AM-FM, 6,100 GVW, 44,000 miles, teal, \$10,500. 717-733-2873

'90 Ford XLT F250 4x4, 460 auto, PS, PB, air, AM-

FM CD, 8,600 GVW, tow package, 77,000 one owner miles, new radiats, excellent condition, \$8,975. 717-733-2873

Several S/A & Larger Dump Trucks Mack Cab/Chassis - Good Grain Truck Pickups, Jeep Cherokee, 4x4 Pickups '99 Nissan UD Cab/Chassis - Low Miles '95 Mitsubishi Box Van 717-463-3701



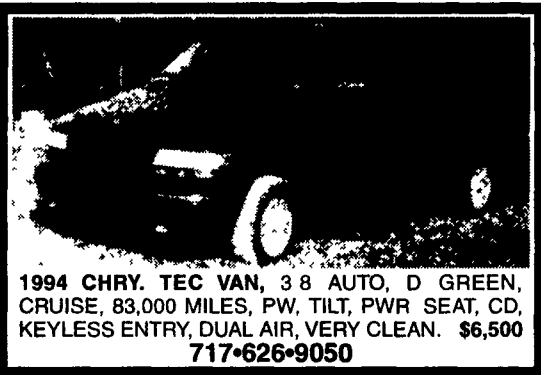
**Notice!!!
Thanksgiving
Holiday
Schedule**

Classified Ads Section D (Other Than Farm Equipment)

Deadline Tuesday, Nov. 21, 2000

5 P.M.

Fax No. (717) 733-6058



1994 CHRY. TEC VAN, 3.8 AUTO, D GREEN, CRUISE, 83,000 MILES, PW, TILT, PWR SEAT, CD, KEYLESS ENTRY, DUAL AIR, VERY CLEAN. \$6,500 717-626-9050



FOR SALE
1993 28 Ft. Rollback w/Peterbilt Chassis - \$35,000 OBO
1997 Peterbilt Long Hood \$39,000
717-933-4114



(2) 1993 IHC 8200 S/A Dump Trucks, Detroit 60 Series 300 HP, 9 Sp. Trans., PS, New R&S 10' Steel Dump Body - \$23,500
Also - (1) 1991 IHC 8200 S/A 10' Dump Truck - \$19,500

Curry Supply Co., Curryville, PA
1-800-345-2829



1986 Freightliner Road Tractor with 1988 Cottrel Car Carrier.

- Call -
Valley Farm Credit
at 304-263-6951 OR 800-666-9185

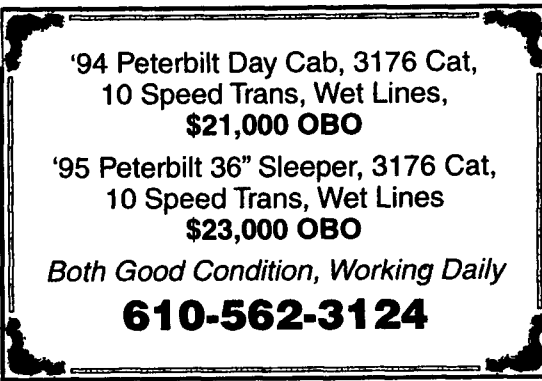


1990 Volvo Vacuum Truck, New 2500 Gal. Tank, Massport Liquid Cooled Pump, Cummins L-10 270 HP, Allison Auto, Air Ride Susp., Nice Unit.....\$39,500

Curry Supply Co., Curryville, PA
1-800-345-2829



1992 Ford L8000, 5-Spd. - 2 Spd. Rear, 2,500 gal. tank, 92,000 mi., Excellent condition. \$40,000
610/826-4381



'94 Peterbilt Day Cab, 3176 Cat, 10 Speed Trans, Wet Lines, \$21,000 OBO
'95 Peterbilt 36" Sleeper, 3176 Cat, 10 Speed Trans, Wet Lines \$23,000 OBO
Both Good Condition, Working Daily
610-562-3124



1990 INT. 4900
Just Overhauled, DT-466/33000 Gross • Well Maintained, Inspected, Serviced • Real Powerhouse • Good Rubber • Asking \$19,900
570-224-0014



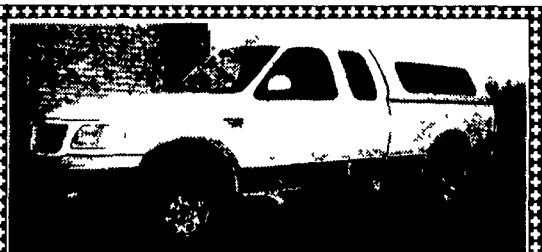
1985 C8000 Ford Crane Truck
3208 CAT Diesel, Allison Auto, Air Brakes, National 337 Hyd Crane w/37' Reach, 3 Section Hyd, 16,000 Lb Hyd Outriggers
Price \$14,500

Curry Supply Co., Curryville, PA
1-800-345-2829



1993 Freightliner FDL12064

MAKE OFFER
N-14 430 Cummins; 10 Sp.; 635,000 Miles; 230" WB; 6 New Tires; Aluminum Wheels; Too many new parts to list. Have receipts. Road ready. Immaculate condition. Must sell.
717-964-3097 • 717-507-4117



1999 F250 XLT 4x4
Extended Cab, 28K Miles, Like New
\$23,000

610-857-0168

Chevy S10 pickup truck, inspected, good tires, \$700. 717-721-3972

'89 C30 Chevy, dully, new fraget motor, 12' bed, \$6500. 301-790-0450, 443-956-8101 mobil



1984 Chevrolet C70 Crane Truck
V8, Gas, 5 Sp. Trans w/2 Sp. Axle; 10' Steel Dump; National 228 Hyd. Crane 28' Reach, 10,700 Lb.; Hyd. Outriggers
Price \$9,500

Curry Supply Co., Curryville, PA
1-800-345-2829

CASH FOR USED DIESEL TRUCKS!

- WE NEED 1/2 TON TO ONE TON:
- FORD DIESELS
 - SUPERCABS
 - CREW CABS
 - DODGE CUMMINS
 - 2WD OR 4X4
 - DUALIES
 - DUMPS
 - UTILITY BODY
 - FLAT BEDS
 - CAB & CHASSIS
 - SUPER DUTIES

LOW MILEAGE ONLY PLEASE

Before you sell or trade your diesel in somewhere else for LESS.

CALL US!

We Pay More for Used Diesel Trucks Than Anyone. TRY US!

800-363-2767

or 610-678-3243

Ask for Smokey or Kay



RD 7, Box 405
Lebanon, PA
17042

BOWERS USED CARS INC.
Route 30 West of Abbottstown, PA
7015 York Rd. 717-624-7072
www.bowersusedcars.com



98 CHEVY K1500 SILVERADO CLUB CAB 4X4
3rd Dr 350V0 8 Auto PS PB AC PW&L R Title 52,000 Miles Very Nice Truck \$16,900



90 CHEVY 3500
Ext Cab Silverado 4x4 454 V8 Auto Equipped \$8,995



98 FORD EXPEDITION XLT
5 4 V8 Triton Equipped 3rd Seat \$18,500



1997 DAYBREAK BY DAMON 33 Motor Home 460 V-8 Ford Central AC & Heat Rear Camera Driver Door 17,000 Miles \$34,900



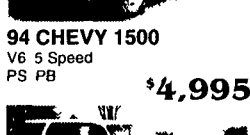
96 DODGE RAM 1500 LARAMIE XLT
V8 Equipped 68,000 Miles R Title \$8,995



94 CHEVY 1500
V6 5 Speed PS PB \$4,995



97 DODGE CARAVAN
1 Owner V6 A PS PB AC PW & L 103,000 Miles \$7,995



95 FORD EXPLORER XLT
4x4 V-6 Auto PS PB AC Equipped 119,000 Miles \$9,995



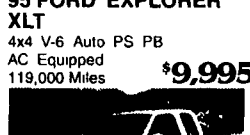
93 CHEVY S10 BLAZER TAHOE LT
4 Dr V6 Auto AC PS PB, Equipped 94,000 Miles \$6,995



97 FORD F150 XLT
4x4 Ex Cab 3rd Door V8 Auto PS PB AC 104,000 Miles \$15,900



95 DODGE EXT. CAB
4x4 8 Bed Laramie XLT V8 Auto Equipped \$11,500



89 FORD F350 DUALY
w/Utility Bed & Lift Gate 7.3 Diesel Auto AC PS PB Mint Cond \$8,995