

Public Auction Register

Closing Date Monday 5:00 P.M.

of each week's publication

SAT NOV 25 - 10AM Annual Public Toy Auction, At Ridge Fire Co Pavilion, Phoenixville, Pa Ted Maurer AU-000593-L
 SAT NOV 25 - 10AM 30th Annual Public Toy Train Auction, at Ridge Fire Co Pavilion, Phoenixville, Pa Ted Maurer AU-000593-L

Phoenixville, Pa Ted Maurer AU-000593-L
 SAT NOV 25 - 11AM Real Estate, 2052 Long Level Rd, Wrightsville, Pa Jacob A Gilbert, #336, Bran L Gilbert #2256
 SAT NOV 25 - 12 Noon 3 1/2 acre Amish Farmette, 38 Middle-

spring Rd, Shippensburg, Camb Co, Pa For David S Blank Les Longenecker auct AU-002975-L
 SAT NOV 25 - 1PM Real estate, 1 room stone school house 1 Trinity Church Rd and Klines Run Rd, Wrightsville, Pa Kenneth A Nickol, executor Gilbert & Gilbert Auct #336, #2256
 SAT NOV 25 - 2PM 3/4 Acre country property Between Reamstown & Red Run By Kerwood H & Sandra F Auker Aaron E Martin, aucts
 TUES NOV 28 - 9 30AM farm equip auction Yoder & Frey, Inc Archbold, Ohio
 TUES NOV 28 - 6 30PM 786 Acres, Double D Farms, LaGrange Co Schrader Auct

WED NOV 29 - 7 30PM Feeder Cattle Sale, Four States Live-stock, Hagerstown, Md

FRI DEC 1 - 7 PM Feeder Cattle Sales Finger Lakes Livestock Exchange, Canandaigua, NY
 SAT DEC 2 - 8 30AM Real estate, personal property cars tractor, East Prospect bank stoc, 2684 Craley Rd., Craley Pa Estate of Reuben M Graham Blaine N Rentzel AU#761 Todd Hatter AU#3440 Dave Conley AU#3269
 SAT DEC 2 - 8 30AM - Horse 10AM Mel's Stables, 834 Wallace Rd., New Holland, PA Mel Hoover, Auctioneer
 SAT DEC 2 - 9AM Complete dispersal of J&M Home Improvements, building supplies & pallet racking At 4980 Limestone Road Oxford, Pa Wolgemuth Auct #2357

DECEMBER

FRI DEC 1 - 4PM Antiques, furniture, masonic items, collectibles, Winross trucks At 3013 E Market St York, Pa Gilbert & Gilbert Aucts #2256, #336
 FRI DEC 1 - 5PM Basket Auction, Middleburg, Pa 2/10 of a mile E of Rt 104 and Rt 522 at the Middleburg Fire Hall Anna Miller, owner Robert L Leitzer, AU-002062-L, Tim L Kline, AU-002998-L
 FRI DEC 1 - 7 PM Horse Sale New Holland Sales Stables, 101 W Fulton St New Holland Pa

FALL ANTIQUE AUCTION

ESTATE OF J. ORVILLE PATTERSON ST. DAVIDS ET AL.
SUNDAY, NOVEMBER 19, 2000 • 10:00 A.M.

PREVIEW: SATURDAY, NOVEMBER 18, 1 TO 5 P.M.

KIMBERTON FAIRGROUNDS, KIMBERTON, PA

DIRECTIONS: From PA Turnpike exit 23, to Route 100 South 1/2 mile to Route 113 North 6 miles to Kimberton. Fairgrounds on the left.

OIL PAINTINGS, FURNITURE, STERLING, MUSIC BOXES, CLOCKS, BRONZES, ORIENTAL RUGS, WEAPONRY, MANY EARLY PRINTS, PORCELAINS

FURNITURE: 18th Century Two Part Cherry Duncan Phyfe Banquet Table, Signed Michael Allison; Walnut Eight Drawer Claw Footed High Chest w/Rope Carved Corner Columns; Walnut Four Drawer Silver Chest w/OG Bracket Feet; Chippendale Style Piecrust Tilt-Top Table; Early Grained Painted Sugar Chest; Malachite and Marble Pedestal; Chippendale Centennial Pie Crust Table; Inlaid Library Table w/Bulbous Pedestal Demi-Lune Game Table w/Diamond and Checkered Banded Inlay; Cherry Graduated Four Drawer Chest w/French Bracket Feet; Mahogany Four Drawer Queen Anne Chest w/Claw Feet; Early Pembroke Drop-Leaf Table w/Butterfly Leaves; Cherry Slant Top Desk w/Graduated Drawers and French Bracket Feet; Chippendale Stepback 2 pc.; Bookcase w/Ball and Claw Feet and Raised Mullions; Mahogany Empire Marble Top Dressing Table; Cherry Slant Front Desk w/Eagle Inlay; Hardwood Dutch Cupboard, Smells Like Cherry; Chippendale Walnut Two Drawer Blanket Chest; Ormolu Gilded Beveled Glass Curio Cabinet; Chippendale High Back Needlepoint Arm Chair w/Carved Eagles; Winged Griffin Morris Chair; Arts and Crafts Handpinned Grand Rapids Stretcher Base Table; Oak Display Case; Mahogany Inlaid Wall Table; Spinnet Desk; One Drawer Night Stand; Two Spinning Wheels; Clawfoot Library Table; Windsor Chairs; Mahogany Barrister Bookcase; Windsor Style Rocker; Victorian Wire Plant Stand; Many Other Victorian Chairs; Cherry Two Drawer Night Stand; Eight Dining Room Chairs; Mahogany Ball and Claw Foot Dining Room Table; Chippendale Tiger Maple Mirror; Walnut Drop Leaf Table; Two Drawer Side Table; Fancy Mahogany Mirrors; Early Walnut Mirrors and Frames; Walnut Shaving Mirror; Early Martha Washington Sewing Cabinet; Turn of the Century Leather Loveseat and Matching Chair; Ladder Back Chairs; Chippendale Mirror; Other Early Rockers; Mahogany Glass Top Coffee Table; Walnut Drop Leaf; Highly Carved Eagle Wall Mirror; Paint Decorated Stand; Old Blanket Chest One w/Paint; Mahogany Nest of Tables; Mustard Painted Cupboard w/Splash; Mahogany Two Pieces Miniature Highchest in Excellent Form; Philadelphia Empire Desk; Duncan Phyfe Server; Early Grain Painted Jelly Cupboard w/Backsplash.

******19th CENTURY SAMPLER****** "Self Government" by Eliza Ann Fows, work done in her 12th year, excellent example w/lady holding bouquet, boy w/dog, around a brick house, surrounded by majestic trees and landscape, in muted hues of brown, green and blue, embroidered in silk on linen w/floral border.

LAMPS: Large Leaded Dome; Early Lead Glass Table Lamps; Many Early 1920's Lamps w/Original Shades; Pole Lamps; Wheel Cut Possibly Galle Hanging Dome; Fancy Piano Lamp; Early Student Lamp; Many Victorian Shades; More.

MUSICAL ITEMS: Stella 20" Burl Walnut Disc Box w/Matching Ball and Claw Table; French Orchestion Heavily Carved w/Winged Griffins - a Magnificent Case! French Victorian Brass Musical Birdcage, Automaton w/Moving Dresden Ship under Dome; Oak Victor #5 w/Morning Glory Horn and Matching Record Cabinet Base; Other Small Fancy Boxes; Cut Glass Musical Decanter; Swiss Six Tune Music Box w/Inlaid Case.

DECORATIVE ITEMS AND PORCELAINS: Victorian Palace Size Majolica Urn; Figural Majolica; Large Figural Bronze; Early Canine Portrait on Porcelain KPM Painted on Porcelain w/Cherubs; Large Figural Porcelain Collection to Include: Meissen, Dresden, German Figures, Early Capo-di-monte, Royal Dux, Many Fancy Victorian Ladies, Murat, Cherubs; Marble Statue; Over 100 Pieces of Fine Victorian Limogue to include: Dresser Tray, Plates, Covered Dishes, Fancy Serving Pieces, etc.; Etched Glass, Cut, Pressed, Luster; Early Porcelain Rooster; Masonic Scottish Rite Vase; Bronze Equine and many other Small Decorative Bronzes; German Mugs; Thistle Pattern; Chamber Set; Early Bottles; Figural; Bennington Pitcher; Cast Iron Doorstop; Rare

Sgraffito Redware w/Child; Austrian Dresser Set; Wavecrest; Three Early Meissen Figures; Wedgwood Urn; Meissen Style Lamps; Many other Fancy Lamps; Victorian Photo Albums; Many Large Silverplated Trays; Pair of Girandles; Very Ornate Hair Art in Shadowbox Frame; Oyster Plates; Brass Sconces; 12-Piece Limogue Fish Set; Early Ship Models; Miniature Porcelains; Exquisite Gilded and Beaded Dresser Set.

CLOCKS: Waltham Eight Day Five Tube Musical Grandfather Clock in Mahogany; French Crystal Palace Clock; Albert Wister Crystal Palace; Pair Marble Urns; Collection of Vienna Regulators; Figural Art Nouveau Clock; Walnut Railroad Clock from Potts and Sons; Eight Day OG Clock; Cupid Clock; Jacob Gulhart Lebanon Eight Day Movement Grandfather Clock.

OIL PAINTINGS AND PRINTS: Oil Paintings: Chanlot by Claude Lorraine Fernely; River Landscape by Henry Biva; Winter Scene by Thomas A. Harrison; Oil on Canvas by J. Gracin; J.L. Haltrak; A.S. Perrier; 19th Century Nobelmen w/Horse by Astley; T.B. Blakelock; Robert Street Portrait of Woman; Corot; D.Lilly; Two Outstanding Remington Prints; Over 100 Prints to include: 4 Plate Series; A Hurdle Race, Engraved by C. Hunt; the Brook by Thomas Blinks; Gone Away by Sheldon Williams; Not Caught Yet by Alfred Strutt; Dr. Syntax by Benjamin Marshall; Thomas Oldaker by Benjamin Marshall; The Wynstay Hunt by Henry Calvert; Chances of the Steeplechase by James Pollard; Others by Leighton, Anderson, Carl Vernet, Etching: Baird, Trelade, Sparly, Law, Many Sporting Scenes, Maxfield Parrish, Collection of Louis Icart Prints: Memories Cigarette, Invitation, Laziness Paresse, Farewell, Speed Vitess and more.

STERLING: Victorian Egg Coddler; Numerous Sets of Sterling Flatware to Include: 178 Pieces S. Kirk and Sons, 109 Pieces Gorham & Chantilly Pattern, A Large Assortment of Sterling Serving Pieces in Different Patterns, Early Sterling Tea Service, Baskets, Serving Platters, Compotes, Candles, A Very Large Collection of Souvenir Spoons, Some Enamel, Set Lenox Blue Mark Demitasse Cups and Saucers.

ORIENTAL RUGS: Eighteen Estate Rugs, Plus a Few Others; Incredible Estate Collection of Orientals: Room Size Bijar w/Blue Filed, Two Area Majorahan Sarouks, Bird and Floral Kashan, Two Room Sized Heriz, 10x13 Sarouk, Two Room Sized Kirmans, Many Other Area Rugs
TEXTILES: Many Fancy Linens, Tablecloths, Early Homespun, Quilts, Indian Rugs.

JEWELRY: 14 Kt. Mans Ruby and Diamond Ring w/4 Kt. in Diamonds, Diamond and Saffire Ring in Platinum; 2 Ct. Horseshoe Diamond Ring; Platinum and Diamond Pendant, Diamond and Saffire Ring in Platinum, 14 Kt. Watches, Other Rings, Victorian Jewelry, Antique Cameos, Platinum and Saffire Watch w/Diamonds, Early Costume etc.

WEAPONRY: Early Pistols, Smith and Wesson, American Double Action, W.W.I. Springfield Model 1903, 20 Ga. Shotgun Stevens, Fox-Sterlingworth Double Barrel Shotgun, Calvery Saber, Three Partisans, Nazi SA Dagger, Two Mythological Shields.

Auctioneer Note: J. Orville Patterson was an avid collector of all forms of art and objects of Vertu. It was wonderful although overwhelming as we passed through each voluminous room of this St. David's mansion. Selling fifty years in a day!!

10% Buyers Premium

RON RHOADS AUCTIONEER

DOUGLASSVILLE, PA

610-385-4818

WFB: www.echant.com

Eileen Rhoads AU003750L
 Ron Rhoads AU002045L

LIQUIDATION SALE

of Leather Working and Shoe Machinery Including Clickers, Skivers, Splitters, Sewing Machines, etc.
Dates: NOV. 13, 2000

9 AM - 5 PM
 NOV., 14, 2000
 9 AM - 1 PM

Location: Ephrata Shoe Company, 18 North State Street Rear, Ephrata, PA

PUBLIC SALE

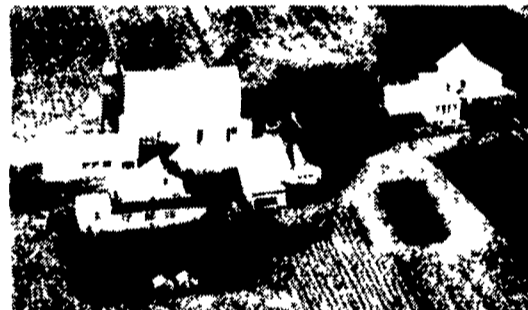
25 Acre Farmette
 Farm Equipment, Household Goods,
 Antiques, Vehicles
MON., DEC. 11, 2000

10:00 AM

Located at 205 Union Rd., Lebanon, (near Mt. Zion), Bethel Twp., Lebanon Co., PA

Directions: from Myerstown take Rt. 422 west app. 4 miles, turn right onto Prescott Rd., proceed 3 miles to Mt. Zion Rd., turn right go 3/10 mile, turn left onto Union Rd., go 1/2 mile to sale on left. Watch for yellow sale signs.

A certain tract of land consisting of 25 acres M-L. 20 acres tillable, balance in pasture with stream, app. 1,100' of road frontage. Erected thereon a:



2 1/2 Story Frame Dwelling with summer house attached, alum. siding. Storm windows and doors. Large kitchen with built in cabinets, double oven, corning stove top, dishwasher, inlaid linoleum. Large dining room, large livingroom, laundry, half bath, sunporch, **Second Floor:** Five bedrooms, three closets, full bath, attic storage, basement, large porch, oil hot water baseboard heat, well with pressure system, on lot sewer, fruit and shade trees, shrubbery, garden, blacktop driveway,

Two Bay Frame Bank Steer Barn

with lean-to, 28'x42' frame equipment shed and shop with 220 electric service. 22'x50' frame corn barn. 24'x32' frame equipment shed, 20'x65' frame chicken house, 10'x30' tile silo.

Real Estate 12:00 Noon

Note: This well kept property has many possibilities located in North Lebanon School District.

Open House: Saturdays, November 18-25 from 1:00-4:00 PM.

Terms: 10% Down day of sale, balance on or before April 2, 2001.

Atty. Walter Whitmoyer Jr.

Farm Equipment

International 684 diesel tractor, 4 wheel drive, TA; International 606 utility gas tractor sells with New Idea loader; 2 Farmall Super C tractors, recently restored, with cultivators, cornplanter, mower; Int. 91 SP 10' combine; M F. #12 baler; 2-16' bale wagons, one with racks; New Idea 213 manure top beater spreader; New Idea #323 cornpicker, 2-Gravity bin wagons; Int 3 pt. 3x14" trip bottom plow; Dunham 10' cultmulcher, Brillion 9' cultipacker; 3-section harrow; Int. 6' disc; New Idea 270 Cut-ditioner, J.D. side delivery rake; Case 28' bale-corn elevator; Gehl 85 grinder-mixer, Gehl 72 Flail chopper; Kool forage blower; 200 Gal 3 pt sprayer; Ontario 6' wooden wheel grain drill; Int. belt driven cornsheller, cement mixer/motor, 2-fuel tanks, Platform scales; misc. butcher tools; 2-butcher kettles, chicken nests, feeders, waters, coops, Misc. shop tools and lumber, plus more farm related items not listed.

app 300 Bales alfalfa - straw

Vehicles

1985 Olds Delta 88, Two Door, 350, auto; 1979 G.M.C. 4x4 Pickup, 350, auto.

Misc. Household Goods and Antiques

Come early and enjoy the day with us

Sale for: **Frank and Pat Dubbs**
 717-865-3213

Martin's Auction Service
 AU1078L
 717-354-7186

Lunch Served - Not Responsible For Accidents