

## Pa. Weekly

13 Livestock Auctions

Friday, Nov. 3,

Report Supplied By PDA

**CATTLE 5153...** Compared with 5143 head last week and 5499 head a year ago. Compared with last week's summary..slaughter steers mostly steady with some strength noted, Holstein steers 1.00 to spots 3.00 higher, heifers steady to firm, sl. cows mostly steady, bulls mostly 2.00 higher.

**SLAUGHTER STEERS:** High Choice and Prime 2-4 70.00-73.50, Choice 1-3 65.00-70.00, Select and Low Choice 2-3 63.25-67.50, Select 1-3 60.00-65.50, Standard 1-2 53.75-60.75.

**HOLSTEINS:** High Choice and Prime 2-3 60.75-65.25, Choice 2-3 58.00-61.50, Select 1-2 53.00-58.75, Standard 1-2 48.00-53.50.

**HEIFERS:** Choice 2-4 63.00-68.25, few Prime to 70.00, Select 1-3 59.75-64.25, Standard 1-2 50.00-58.75.

**COWS:** Breakers 75-80% lean 37.75-43.75, Boners 80-85% lean 34.50-39.00 early sales to 41.00, Lean 85-90% lean 30.00-35.00. Shells 29.50 and down.

**BULLOCKS:** Select 1-3 53.00-64.00.  
**BULLS:** Yield Grade 1 1000-2500 lbs 47.00-57.50, Yield Grade 2 900-2400 lbs 41.00-47.50.

**FEEDER CATTLE: STEERS:** Medium and Large 1 300-500 lbs 83.00-97.00, 500-700 lbs 76.00-87.50, Medium and Large 2 300-500 lbs 70.00-84.00, 500-700 lbs 65.00-77.00; **HEIFERS:** Medium and Large 1 300-500 lbs 80.00-94.00, 500-700 lbs 70.00-83.00, Medium and Large 2 300-500 lbs 65.00-76.00, 500-700 lbs 55.00-70.00; **BULLS:** Medium and Large 1 300-500 lbs 85.00-104.00, 500-700 lbs 70.00-85.00, Medium and Large 2 300-500 lbs 63.00-88.00.

**CALVES 3049...** Compared with 3311 head last week and 3430 head a year ago. Vealers small supply mostly steady..**VEALERS:** Choice 180-375 lbs

84.00-105.00, Good 140-275 lbs 55.00-82.00, Standard and Good 75-120 lbs 35.00-65.00, Utility 50-100 lbs 10.00-30.00; **FARM CALVES:** Holstein bull calves mostly steady with little discounts for lightweight calves, Holstein heifers 5.00 to 15.00 lower..No 1 Holstein bulls 80-120 lbs 100.00-150.00 late sales 165.00, No 2 80-120 lbs 50.00-132.00 mostly 70.00-97.50, No 1 Holstein heifers 80-120 lbs 270.00-395.00, No 2 80-120 lbs 130.00-260.00. Beef type bulls and heifers 75-130 lbs 85.00-200.00.

**HOGS 1190...** Compared with 1212 head last week and 1813 head a year ago. Barrows and gilts 2.00 to 4.00 lower as packers report backlogs and slow wholesale movement, sows 4.00 to 5.00 lower. **BARROWS AND GILTS:** 49-54% lean 220-265 lbs 32.25-36.00, few early sales 39.50, 45-50% 220-275 lbs 31.50-34.50, 40-45% lean 240-300 lbs 28.00-31.00. **SOWS:** US 1-3 300-500 lbs 23.00-27.00, 500-700 lbs 26.00-31.00. **BOARS:** 11.00-16.00.

**FEEDER PIGS 346...** Compared with 286 head last week and 468 head a year ago. US 1-3 25-45 lbs 10.00-23.00, 45-60 lbs 22.00-57.50 per head.

**SHEEP 1050...** Compared with 918 head last week and 1541 head a year ago. Slaughter lambs steady to 5.00 lower..**SLAUGHTER LAMBS:** Choice 50-85 lbs 90.00-120.00, 85-110 lbs 80.00-95.00, 110-140 lbs 70.00-85.00, Good and Choice 65-90 lbs 64.00-84.00. **SLAUGHTER SHEEP:** 20.00-50.00.

**TWO GRADED FEEDER PIG SALES 1110...** Compared with 348 last week and 670 head a year ago..Feeder pigs steady to firm insight of declining hog prices..US 1-2 30-40 lbs 97.00-107.00, 40-60 lbs 72.00-92.00; US 2 30-60 lbs 76.00-86.00, 60-90 lbs 70.00-71.00; Slaughter: 18-30 lbs 150.00-175.00, 30-40 lbs 90.00-100.00 per cwt.

## Okla. National Stockyards

Oklahoma City, OK

November 8, 2000

Report Supplied By USDA

Compared to last week: Steer and heifer calves steady to 3.00 higher, greatest advance on light weights suitable for early wheat pasture. Light supply feeder steers steady to 1.00 higher. Feeder heifers not well tested, few steady. Trade active and demand good for most classes. Quality plain through attractive with several attractive calves. Calves in thin to fleshy conditions with more thin calves than is normal for the fall season. Feeder cattle in slightly thin to fleshy conditions. Weigh-ups mostly average. Slaughter cows .50-1.50 lower. Slaughter bulls .50 higher. Packer demand moderate. Total of 300 cows and bulls sold with 55 percent to packers. Receipts this week 7175; last week 7054; last year 14,119.

Supply consisted of 39 percent calves and yearlings over 600 lbs; 57 percent calves under 600 lbs; 4 percent cows and bulls. Heifers comprised 42 percent of feeder and calf supply.

Prices follow with weighted average weight and price in parenthesis. Feeder Steers: Medium and Large 1: Calves: 325-400 lbs (350 lbs) 114.00-126.50 (121.43); 400-500 lbs (450 lbs) 103.00-117.50 (108.83); 500-600 lbs (550 lbs) 87.00-97.50, Fancy 95.75-105.00 (96.16); 600-700 lbs (650 lbs) 86.00-92.00, pack-age Fancy 94.50 (88.47); Yearlings: 600-700 lbs (650 lbs) 90.50-95.00 (93.89); 700-750 lbs (726 lbs) 90.00-94.00 (92.42); 750-800 lbs (762 lb) 87.75-91.00 (90.17); 800-850 lbs (823 lbs) 85.50-86.25 (85.84); lot 860 lbs 86.50; 900-950 lbs (925 lbs) 78.50-79.25 (78.78).

Feeder Heifers: Medium and Large 1: Calves: 300-350 lbs (327 lbs) 112.50-119.00 (114.72); 350-400 lbs (389 lbs)

Lancaster Farming, Saturday, November 11, 2000-A7

105.00-113.50 (108.94); 400-450 lbs (431 lbs) 95.00-100.50, few thin 104.00-106.00 (99.34); 450-500 lbs (482 lbs) 89.50-96.75, several thin 92.50-98.00 (93.45); 500-550 lbs (527 lbs) 85.00-93.00 (89.71); 550-600 lbs (564 lbs) 82.50- 90.25 (85.42); 600-650 lbs (618 lbs) 85.00-87.00 (85.86); Yearlings: 500-600 lbs (550 lbs) 90.00-92.50 (90.77); 600-700 lbs (650 lbs) 85.00-88.75 (87.29); 800-850 lbs (829 lb) 80.00-81.25 (81.01).

Slaughter Cows: Head %Lean Weight Average Dress High Dress Low Dress Breaker 32 75-80% 1150-1600 36.00-39.50 40.00-41.75 35.00-36.00 Boner 50 80-85% 900-1450 35.50-38.50 39.00-43.00 34.50-37.50 Lean 42 85-90% 850-1350 33.50-36.50 36.00-39.00 30.50-34.00 Light 19 85-90% 700-875 32.50-33.50 24.50-28.75

Slaughter Bulls: Head Weight Average Dress High Dress Low Dress Yield Grade 1-2 19 1250-2000 45.00-48.50 49.50-50.00 44.00-45.50

Estimated dressed cost at Oklahoma National Stockyards: Lean 75.50, light carcasses 68.45; Boners 75.10; Breakers 73.25. Bulls 85.15.

Replacement Cows: Pretested for bangs, pregnancy, and age Medium and Large 1 Age Weight Months Bred Quality Price 3-6 yr old 1000-1300 5-6 months Avg, black 640.00; 4-8 yr old 1050-1400 4-7 months Average 500.00-580.00; 9 yr old 900-1100 4-6 months Average 410.00-430.00.

### Carlisle Livestock

Carlisle, Pa.

Report Supplied by Auction

Tuesday, Nov. 7, 2000

**SLAUGHTER CATTLE: ACTIVE!** STEERS HIGH CHOICE AND PRIME 72.00-73.00, CHOICE 1050-1475 LBS. 67.50-72.00, 1500-1800 LBS. 62.75-71.75, SELECT AND LOW CHOICE 1075-1500 LBS. 64.00-67.25,

**HOSLSTEINS SELECT AND LOW CHOICE** 50.00-58.00; **HEIFERS CHOICE** 67.00-71.75, **SELECT AND LOW CHOICE** 62.00-66.75, **HOSLSTEINS TO** 62.00.

**COWS: BREAKERS** 38.00-43.00, **BONERS** 35.00-40.00, **LEAN** 33.00-38.00, **LOW DRESSING LIGHTS** DOWN TO 30.00, **SHELLY** 29.00 AND DOWN; **BULLS YG#1** 48.75-52.00.

**FEEDER CATTLE: STEERS** 300-850 LBS. 72.50-90.00, **HOLSTEINS, DAIRY TYPES** 49.00-80.00; **HEIFERS** 300-850 LBS. 61.50-82.00, **HOLSTEINS, DAIRY TYPES** 44.00-71.00; **BULLS** 400-850 LBS. 63.00-90.00, **HOLSTEINS, DAIRY TYPES** 38.00-75.00; **CALVES RETURNING TO THE FARM, HOLSTEIN BULLS #1** 85-130 LBS. 110.00-140.00.

**SWINE: HOGS US#1-3** 215-290 LBS. 30.00-36.00; **BOARS OVER** 350 LBS. 12.75-14.00; **SOWS US#1-3** 300-630 LBS. 22.00-30.00; **FEEDER PIGS BY THE LB.** 15-22 LBS. 100.00-140.00, 30-60 LBS. 55.50-70.00.

**GOATS: BY THE HEAD, MED. TO LARGE NANNIES AND BILLIES** 45.00-87.50, **FANCY GOATS** 55.00-70.00, **FLESHY GOATS** 40.00-52.50, **SMALL, THIN KIDS** 25.00-36.00.

**LAMBS: GOOD AND CHOICE** 60-80 LBS. 80.00-157.50, 80-110 LBS. 81.00-95.00.

**SHEEP: ALL WEIGHTS** 26.00-50.00.

**SALE EVERY TUES. 5 P.M. FOR RABBITS, POULTRY, AND EGGS.** 6:30 P.M. FOR LIVESTOCK, STARTING WITH CALVES; **SPECIAL FED CATTLE SALES TUES., 21; STATE GRADED FEEDER PIG SALES FRI., NOV. 10; SPECIAL FEEDER CATTLE SALE TUES., NOV. 21; PEN LOTS OF CATTLE SOLD IN ORDER RECEIVED; EARLYBIRD PENS CLOSE TUES., 2 P.M.**

## Not a Seed of Doubt.

AGWAY

2001

Through exhaustive testing and development on over 200 working farms in the Northeast and Mid-Atlantic, Agway's agronomic experts have removed the doubt from choosing seed corn hybrids. All Agway hybrids have been tested for success on farms just like yours, capitalizing on the latest genetic advancements and production practices.

For example: AG5496 features natural corn borer tolerance, fast dry-down, vigorous early growth and superior late season plant intactness. AG6399Bt contains the YieldGard® gene for locations where potential for European corn borer damage is high. It's an excellent choice for early planting, conservation tillage and easy harvesting.

So plant success, not doubt. Give us a call today for more information on how we can provide practical, proven seed solutions that help turn your toughest growing challenges into profitable results.

AGWAY

Practical Solutions.  
Profitable Results.

WWW.AGWAYFARMSEED.COM

®YieldGard is a registered trademark of, and used under license from, Monsanto Company.

## Randall G. Renninger

Certified Public Accountant

Specializing in agriculture and construction industries  
"We help business people discover ways to cut costs, save taxes, and be more profitable"

Call about our FREE seminars

535 W. Orange Street, Lancaster, PA 17603

(717) 299-6480 ♦ Fax (717) 299-6390

When you need to find us...

**CALF-TEL**  
BY HAMPEL CORP.



Dealer Inquires Welcome!

## McElwee's Livestock

Home of Shippensburg Cownet  
3 Locations To Serve You

### Newburg

Mon. 9-4, Thurs. 9-2

(717) 423-6869

### Woodsboro, MD

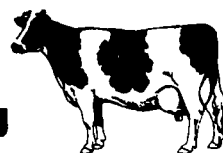
Tues. 10-2

(301) 845-6232

### Chambersburg

Wed. 9-3

(717) 267-3321



Receiving All Cows, Bulls, Steers, Calves  
Call For Daily Price Quotes