



You're Invited to an OPEN HOUSE

Northeast
agri
systems

At the
**IRVIN & NANCY WEAVER
PHIL & MICHELLE OBERHOLTZER FARM**
Womelsdorf, PA

TUESDAY, NOV. 14 • 11 AM TO 4 PM

See An
All New

**155,520 CHORE-TIME 8-Row 5-High
DURAPLUS CAGE LAYER SYSTEM**

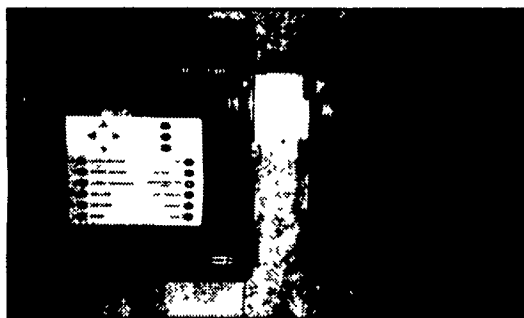


Featuring: **CHORE-TIME Cages** **CHORE-TIME Inlets**

CHORE-TIME Ultraflo Feeding **CHORE-TIME Nipple Drinkers** **Chore-Tronics® Controls**
The Simple Solution



75' x 464' High Rise Layer House with 40'x60' Work Room and Cooler featuring Poured Concrete Walls.



Chore-Tronics® Model 40
The Simple Solution

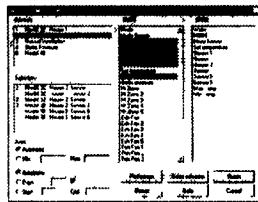
- Forty 1 HP outputs
- Temperature Curve
- 99 day high low temperature and water use history
- Mechanical switches for manual override
- Six temperature sensors
- 8 x 40 display
- Static pressure control
- Alarm output
- Minimum Ventilation timer
- Light clock
- Water usage

Chore-Tronics® Feeder Control
The Simple Solution

- Alarm output
- Controls 2 weigh bins independently
- Automatically transfers feed
- Automatically shuts down augers if storage bin is empty or bridged
- Monitors feed use
- Tracks inventory of weigh bin and storage bin
- Light clock
- Flock data livability - production
- Water usage

Chore-Tronics® C-Central Software
The Simple Solution

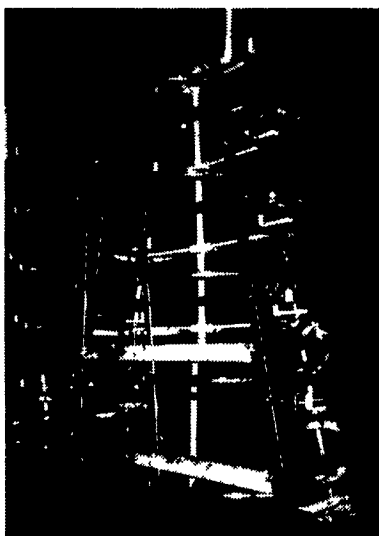
- Uses familiar Windows® based operation system
- Communicates with up to 31 Chore-Tronics controls
- Allows user to monitor or adjust conditions from a PC on the farm or by phone modem
- Easy to use reports and graphs
- Data can be saved for future reference
- Call for free Demo CD Rom



Chore-Time Turbo Inlets provide fresh air and even temperatures for layers and flock managers in all rows, all tiers, and all walkways. Simple to operate. Only one power unit needed for entire house! Chore-time nipples with stainless steel seal. Saddles snap-on pipe, nipple screws into saddle. No glue joints or rubber o rings to leak.



4 Ply 2x12 girders with 6"x8" posts and double 2x6 bracing. Steel I-Beam spans 16' at clear out doors.



Chore-Time 5-High DuraPlus Layer Cage System with new "zip" on curtains to reduce manure build up and clean easier.



Farm is on Wintersville Road about 1/2 way between Rt 78 and Rt 422 From 422 (about 2-1/2 miles east of Myerstown) turn North on Wintersville Road. From 78, take Rt. 501 south. Turn left on Rehrersburg Road and right on Wintersville Road

CHORE-TIME

Equipment by :

Northeast Agri Systems, Inc.
Flyway Business Park
139A West Airport Road
Litz, PA 17543
Ph: (717) 569-2702

Store Hours
Mon - Fri 7:30 am to 4:30 pm
24 Hr 7 Day Repair Service
1-800-673-2580

Serving Delmarva
From
Federalsburg, Md.
305 University Ave.
410-754-9434

Store Hours
7:30 AM - 5:00 PM
Mon.-Fri.

Building by:

KING CONSTRUCTION CO.
601 Overlay Grove Road, New Holland, PA 17557
717-354-4740

A Commitment to Agriculture



Ted Bowers
Reading 610-655-2884
Lancaster 717-291-3641
Hanover 717-633-4003
Toll Free 800-342-6926

Refrigeration by:

BAYSHORE REFRIGERATION
541 Shubert Road
Bethel, PA 17026
(717) 933-4199

Electrical Work by:

BRICKERVILLE ELECTRIC
430 East 28th Division Hwy
Litz, PA
717-626-7536

Excavating by:

ALLGYER EXCAVATION INC.
14 William Penn Highway
Womelsdorf, PA 19567
610-589-5680

Feeding by:



Rheems, PA
1-800-692-6008...