

TWO DAY AUCTION

ANTIQUE GAS ENGINES, TRACTORS & ELECTRIC TRAINS

Former Estate of Grover L. Jones (deceased)

FRIDAY & SATURDAY

NOV. 17 & 18, 2000

9:30 AM
Wilson, NC

Directions: Sale will be held @ Grower's Tobacco Warehouse located on Hwy. 301 South - Wilson, NC.

Partial Listing: Antique tractors, steam engines, stew pots, toy tractors, car parts, toy trains, cast iron tractor seats, corn sheller, train lanterns, train whistles, stone rock grinders, corn & meat grinders, old gas pumps, gas signs, scales, anvils, sausage stuffers, old clocks, cotton scales, tin-smithing tools, gas & oil cans, paper cutters, blacksmith tools, Coca-cola memorabilia, ox yoke, cuckoo clocks, wringer washing machine - wood & metal, steam whistles, milk bottles, Sears chainsaw, Greyhound bus sign, A.C.L. & S&P railroad signs, railroad jacks, House Jacks, Model T coils, Model T headlights, juke boxes, pedal cars, ping pong machine, farm & church bells, magazine collection, toy sewing machines, '72 T Bird, '69 Opel GT, Volkswagon Bug, '67 Chevelle, '69 & '71 Lincoln Continental, Chevy Corvair, '66 Ford truck, '40's Dodge bread van, hit-n-miss engines, steel tractor wheels, Cushman scooter, brass tub washing machine, toy wagons, tobacco plug & cheese cutting machines, & many, many other items. Grover traveled for over 50 years all across the US & other parts overseas. This is just a sample of his collection. Could be the largest collection & most unusual collection in the US today. Call for a brochure or more information visit www.goinsandharris.com or contact below listed.

GOINS & HARRIS INC/AUCTIONEERS
252-257-2140 NCAL 1468
Rt. 3 Box 107 Warrenton, NC 27589

5.3 ACRE COUNTRY PROPERTY

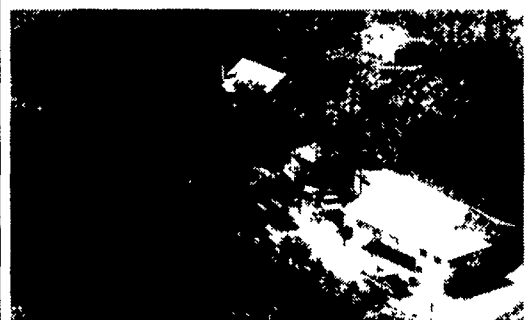
PENRYN AREA

J.D. MOWER - PERSONAL PROPERTY

PUBLIC AUCTION

SAT., NOVEMBER 25, 2000

Auction Time 8:00 A.M. Real Estate 11:00 A.M.
DIRECTIONS: From Litz Route 501 North, left onto Newport Road, go 4 miles to Penryn, turn right onto Penryn Rd then left onto Picnic Grove Road, Penn Township, Lancaster Co., PA.



1446 Picnic Grove Road, Manheim, PA (Penryn)
2 1/2 STORY LOG HOUSE

with kitchen with built-in wooden cabinets, pantry, electric range, refrigerator; dining room with built-in china cabinets, large living room with Fisher wood & coal stove, 1/2 bath downstairs. **UPSTAIRS:** has 2 bedrooms, could easily be converted back to 3 bedrooms, large new addition bathroom with new vinyl tilt-in windows, full attic; slate roof, aluminum siding, storm windows; partial basement with oil hot water heat; well water; septic system

- * Pump House
- * Approx 4 Acres Pasture
- * 6 Run Dog Kennel
- * Private Setting

LARGE 2 STORY BARN: approx 32'x40' contains garage area, horse stable, hay loft, corn crib plus a fore-bay A barn with lots of possibilities

NOTE: Don't miss this quaint country property located along a private road. Many possibilities and plenty of room to expand Zoned R-1 New addition to house not on picture

OPEN HOUSE: Saturday, November 4 1 00pm to 3 00pm

Saturday, November 11 1 00pm to 3 00pm or by appoint For appoint to see or help to obtain bank financing call Aaron E. Martin at 733-3511

TERMS: 10% down payment at auction, balance at final settlement on or before January 10, 2001

ATTORNEY: Michael P. Kane 299-5251

Auction by
SCOTT J. & KATHY J. YERGER
(717) 665-7259



410 West Church Rd
Ephrata PA 17522
(717) 733-3511

Public Auction Register

Closing Date Monday 5:00 P.M.

of each week's publication

Internet Sale Register will be updated every Sat. at 2:23 P.M.

SAT NOV 4 - 9AM New hardware store items Zimmerman's Auction Gallery, 2 Canal St Hancock Ronnie R Zimmerman
Paul Hendershot aucts
SAT NOV 4 - 9AM 2 miles E of Waynesboro Pa Household guns & more lawn tractor equipment of all kinds tractor & farmette

equipment addles & show horse equip Charlie & Mary Ann Etter owners John D. Downin #231L A Jack Downin #2398L

SAT NOV 4 9AM Real estate antiques collectibles for the estate of the Late Helen Dinius Main St Kreamer Pa Kenneth E Hassinger AU 001532-L Neil A Courtney AU-002651-L

SAT NOV 4 9AM Antiques miliana furniture sporting primitives Nazi Items swords firearms Wotrung Auction Center on Rt 387 4.1 miles N of the Y with route 309 from Schnecksville Tim Wotrung Auct AU1563

SAT NOV 4 - 9AM Household goods antiques collectibles Granite/Agateware Fiestaware

JD #175 riding mower 115 Colonial Rd 1 1/2 Mile E of Inter-course Robert & Sherry Rapp owners Robert E Jeffrey R & Michael L Martin aucts Au 000580L

SAT NOV 4 9AM Real estate HH goods china woodworking equip & too s 375 Old Dam Road Christiana Pa By Melvin R & Rebecca Petersheim Leon Kurtz AU 000522 L E L Petersheim AU-3407-L

SAT NOV 4 - 9AM Real estate farm machinery & saw mill house hold goods in Washington Twp Northumberland Co Sarah Borkoski owner Roger A Lauver AU 002634-L Deal E Longacre aucts

SAT NOV 4 - 9AM Building materials Koser Building Materials 523 Koser Rd Elizabeth town, Pa John Koser AH-000140 L Wolgemuth Auction Service

SAT NOV 4 - 9AM Tractors fork lifts shop tools lawn mowers cool lecor toys vehicles office equip At Shaffer Equip Co on Rt 317 Burrsville Rd Shaffer Equip Co Owner A Curtis Andrew Auction Inc

SAT NOV 4 9AM real estate antiques collectibles misc auto mower snow blower & misc 50 Miles N of Harrisburg Pa in the Village of Richfield Pa George & Sadie Housel owners Robert L Leitzel AU 002062 L Tim Kline AU 002998 L

PUBLIC AUCTION

of
ANTIQUe FURNITURE - GENERAL ANTIQUES - COLLECTIBLES - DISHES & GLASSWARE, ETC.

on: **SAT., NOV. 11, 2000**
at 9 AM

At Springetts Fire Co. Social Hall, 3013 E. Market St., York, PA. The undersigned Executrix of the Kathryn S Rohrbaugh Estate of York, PA & others will offer at public auction the following -

ANTIQUe FURNITURE

Bow front china cabinet, Walnut Victorian sofa & 4 side chairs, Fancy oak desk & bookcase combination. Gateleg table, Mahogany 3 over 5 high case of drawers. 2 Matching antique dressers, Oak chest of drawers w/mirror, 9 Pc Mahogany dining room suite. Stuyvestant small size 66 key upright piano & bench, Victrola & records, Marble top stand, Childs wicker rocker, Sofa, oval mirror, German grandmothers clock, Wicker tea cart, Room divider, Tilt top card table, Cradle, Small secretary desk, Also bedroom furniture, a general line of small antiques, dishes, glassware, collectibles & personal property, etc.

Not responsible for accidents.

PREVIEW SHOWING: Friday Eve Nov. 10, 6:30 pm to 8:00 pm and 1 hr. prior to auction

TERMS: Cash or personal check w/auctioneer approval No out of town or out of state checks unless accompanied by a current letter of teleference from your bank.

Joan Holtzaple, Executrix
William B. Anstine, Jr., Attorney

Auction Conducted By:

Gilbert & Gilbert Auctioneers
Jacob A. Gilbert Lic. #336
Brian L. Gilbert Lic. #2256
Phone (717)252-3591 or 252-1656

NARVON VALLEY BISON FARM

PUBLIC AUCTION

VALUABLE REAL ESTATE

#1 - 118 ACRE LIMESTONE FARM w/2 FAMILY DWL.

#2 - 35 ACRE WOODLAND/CLEARED TRACT

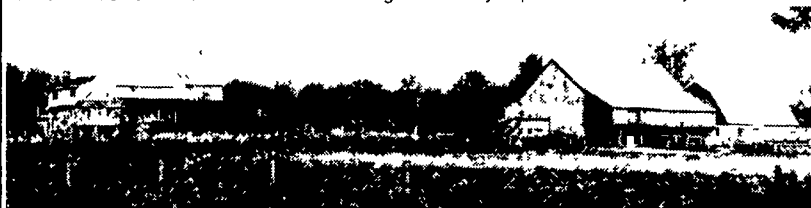
PERSONAL PROPERTY - FURNITURE

J.D. 2550 DIESEL TRAC w/LOADER

APPROX. 180 ROUND BALES GRASS HAY

SAT., DECEMBER 16, 2000
9 A.M. Real Estate 1 P.M.

LOCATION: 896 Churchtown Rd., Narvon PA From Blue Ball, Rt 322 East approx 6 mi turn right onto Churchtown Rd approx 1 mi to farm on right or from Honey Brook Rt 322 West approx 2 1/2 mi turn left onto Churchtown Rd to farm on right Salisbury Twp Lancaster County



#1 - 118 acre limestone farm w/productive level land approx 100 acres tillable, balance pasture & woodland approx 3000' frontage along Churchtown Rd & Mast Rds 3/10 mi macadam drive 2 family dwelling includes - #1 side log & stone 2 sty house w/over 2500 S F area 5 bdrms 1 1/2 baths, kitchen, dining & living rm w/fireplaces #2 side is 10 yr old 1 1/2 sty frame w/siding house over 1656 S F area, 2 bdrms 1 1/2 bath, oak raised panel kitchen, living rm w/brck hearth House features Mahoning outside wood furnace hot water heat heat pump & central AC Large deck w/pavilion

BARNs Include - Stone & frame bank barn 32'x62 w/attached masonry & frame horse barn 42'x38 w/4 horse stalls & 2nd floor storage Detached garage & outbldgs

#2 - 35 acre tract of land w/approx 7 acres tillable balance woodland w/frontage & access from Churchtown Rd

NOTE: Unique opportunity to purchase farm & country size tract of land Terms 10% down balance on or before **MARCH 1, 2001**, Farm & tract sold separate Secluded country setting a One of a Kind with unlimited potential Spring fed pond **8-strand high tensil fence around 118A farm & 35 A. tract**, inspection by appointment or open house on Sats Nov 25 & Dec 2 & 9 from 1 4 PM For brochure landplotting & financing call auctioneers at 717-445-4309 or 717-733-1006

Auction conducted by
Randal V Kline, Lloyd Kreider
Roy Good, Jr, Auctioneers
Lic #2116, #499 #513
717-445-4309

Terms by

ROBERT W. CAMPBELL
717-354-0826
Linda Kling, Atty.



INDIAN ARTIFACT AUCTION

SATURDAY, NOV. 11, 2000 - 10:00 A.M.

on the premises of
THE AMERICAN LEGION HALL
Located Along Rt. 15, South Williamsport, PA



Preview 8:00 A.M. Day of Sale

The collection of a local Historical Society Museum. An important dispersal of Prehistoric and some historic items to benefit the museum's acquisition fund. The core of the collection was donated by the late James V Stowell, a locally famous author and arctic explorer. There are some additions to round out the sale. **Over 300** lots of flint, slate, pottery, axes and celts from the U.S to South America. Highlights include **Folsom point** from Colorado, **clovis points** from N. Eastern and Mid-Western states, fine **jasper perkiomen points**, huge selection of grooved axes including one barbed form Susquehannock pottery jar and pipes, Iroquois and New Jersey pottery pipes and jar Huge selection of N Y flint and pottery Banner stones, gouges, slate point, stone bowl, mortars, 20 and 28" pestles, Columbia River stone maul, discoidal, plummets, bone awls, points, fish-hook and more Navajo rugs and saddle blankets, Iroquois headed Glengary cap, three pipe bags and other beaded bags along with four pair of beaded moccasins

Terms: Cash or good check day of sale with I.D. - 10% buyers premium.

Conducted by
Scott Younkis & Associates
AU-1666
(717) 323-9011

Sale conducted by
Richard P. Johnston, Mgr.
Phone: 570-327-8951



Catering on premises

VISIT US AT:
www.probstauction.com



PUBLIC AUCTION

Sat., November 11, 2000

At 9:00 A.M.

Loc 12 Overhill Dr., W Lampeter Twp., Lancaster Co., PA (Dir Along Windy Hill Road, bet Lampeter Rd & Old Strasburg Pike)

FURN: Bumper pool table w/access, slant-front desk over drawers, dove-tailed wood bench, Singer tread sew mach bed set, jelly cupbd (parts as is), blanket box, butcher tbl, child's early crib, high chr, rkr & school desk, mirror, stor cab, fold chrs, etc

ANTIQUES & COLLECTS: 1834 Coverlet (Hetty Hoffman, F Stohl, Lampeter), homespun linen, early slips, men's suits, bonnet Press-paper wash tub, early auto lugg rack, burlap bags, market basket, 1927 barometer Few post cards, water wheel, bell wheel (both as are) **CAST IRON:** Pump troughs, tremmil hooks, steam eng cleat, early bottle capper, griddle, sprinklers, lead & butcher ladles, #5 & #8 Wagner skillets, milk cans, sad irons, pea scales, lg flywheel **BRONZE:** Hogshhead plug & stair tread tracks **BRASS:** camel bell **WOOD:** Lg spoke wheel, egg crate, wringer, lg dbl ox yoke, water bucket, cigar cutter, dbl Sheaf-or-Wheat butter press sled, pulley, stomper, milk crate, cigar mold, buggy seat, Cga Wagon parts front bow, hound, sill, hayload pole Wagon jack (as is), apple butter stirrer, cheeseboxes, straw cutter, wheat cradle, saus skin tool, egg beater, early seeder, sand molds, tobacco spear lightning rod ball, lot early door hdw **TIN:** Queen Dairy milk box, early tobacco planter, funnel, fly trap, scales, Ford oil cans, Witman's box, adv oil cans, lanterns, **GRAY AGATE PCS,** adv fans, (4) Carlson Lancaster scenes, (5) Wallace Nutting prints, daugerreotypes, early bl & wh photos, **BOOKS**

TOYS: BOTTLES (Milk & Beer) **GLASS/CHINA:** **STONEWARE:** Crocks: E S & B #5 (chpd), FH Cowden blue dec cake (hairlines), #6 blue dec w/ears (nice)

EARLY TOOLS: Wood mash stirrer, early auger, one-man x-cut saw, 2 & 3-pr hay forks, broad axe, cleaver, hand grndr hay hook, wood flail, shovel honey dipper

USEFUL TOOLS: Rototiller, hammer drill, work bench w/vise, log chain, sewer snakes, suring & hyd jacks, conc tools, drop cord, dung & stone forks, rakes, picks wood ldrs, brooms, shovels, axe, wedges, wrenches, punches, chisels, tin snips, socket set lg h d pipe jack & cutter, lot misc const materials lumber, planks, lots of hdw, met tubs lot qt & blue jars Savory roaster, baskets, etc

FOR PICTURES, FULL LISTING & LOCATION,
REFER TO: www.probstauction.com
FOOD SERVED.

'DIGGER DICK' COLLECTED ONE OF EVERYTHING!

Auction by
'DIGGER' DICK & ELLA MAE (SUE) HERSHEY

PROBST FAMILY AUCTION
ERIC R. PROBST, Auct.
AU-001856-L, 464-3700